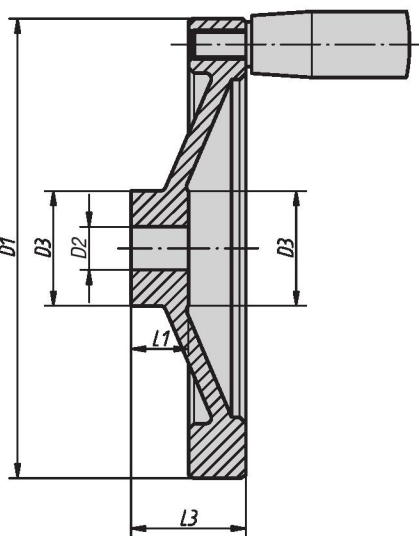
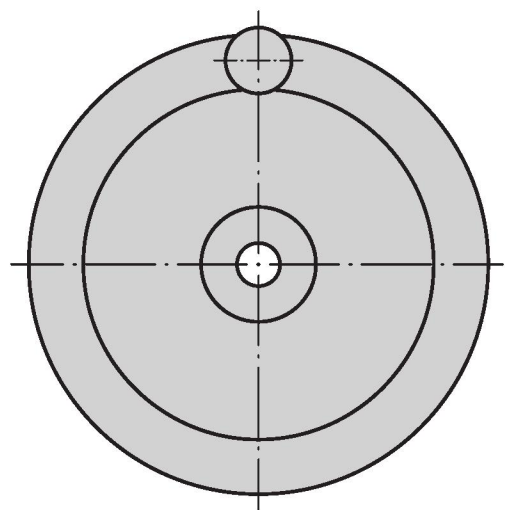


Disc Handwheels

aluminum planed

INCH
Parts



Material:

Disc handwheel in aluminum;
taper grip handle in black duroplastic
PF 31-DIN 7708, center part in galvanized
steel

Type:

Wheel rim turned and polished.

Part Number Example:

K0161.0080XCN

On request:

Square hole broached hubs or powder-coated
handwheels.

KIPP Disc Handwheels aluminum, planed, without handle, inch

Item No.	D1	D2 line 1	D2 line 2	D3	L1	L3
K0161.0080XCN	80	.312	-	25	16	31
K0161.0080XCO	80	-	.375	25	16	31
K0161.0100XCO	100	.375	-	31	17	34
K0161.0100XCP	100	-	.500	31	17	34
K0161.0125XCO	125	.375	-	30	18	37
K0161.0125XCP	125	-	.500	30	18	37
K0161.0140XCP	140	.500	-	34	19	34
K0161.0140XCQ	140	-	.625	34	19	34
K0161.0160XCP	160	.500	-	40	20	40
K0161.0160XCQ	160	-	.625	40	20	40
K0161.0200XCQ	200	.625	-	50	24	46
K0161.0200XCR	200	-	.750	50	24	46
K0161.0250XCR	250	.750	-	50	28	49
K0161.0250XCV	250	-	.875	50	28	49



Disc Handwheels

aluminum planed

KIPP Disc Handwheels aluminum, planed, with fixed handle, inch

Item No.	D1	D2 line 1	D2 line 2	D3	L1	L3	Fixed cylinder grip
K0161.2080XCN	80	.312	-	25	16	31	ø18 x M6x40
K0161.2080XCO	80	-	.375	25	16	31	ø18 x M6x40
K0161.2100XCO	100	.375	-	31	17	34	ø18 x M6x40
K0161.2100XCP	100	-	.500	31	17	34	ø18 x M6x40
K0161.2125XCO	125	.375	-	30	18	37	ø21 x M8x50
K0161.2125XCP	125	-	.500	30	18	37	ø21 x M8x50
K0161.2140XCP	140	.500	-	34	19	34	ø21 x M8x50
K0161.2140XCQ	140	-	.625	34	19	34	ø21 x M8x50
K0161.2160XCP	160	.500	-	40	20	40	ø26 x M10x80
K0161.2160XCQ	160	-	.625	40	20	40	ø26 x M10x80
K0161.2200XCQ	200	.625	-	50	24	46	ø26 x M10x80
K0161.2200XCR	200	-	.750	50	24	46	ø26 x M10x80
K0161.2250XCR	250	.750	-	50	28	49	ø28 x M12x90
K0161.2250XCV	250	-	.875	50	28	49	ø28 x M12x90

KIPP Disc Handwheels aluminum, planed, with revolving handle, inch

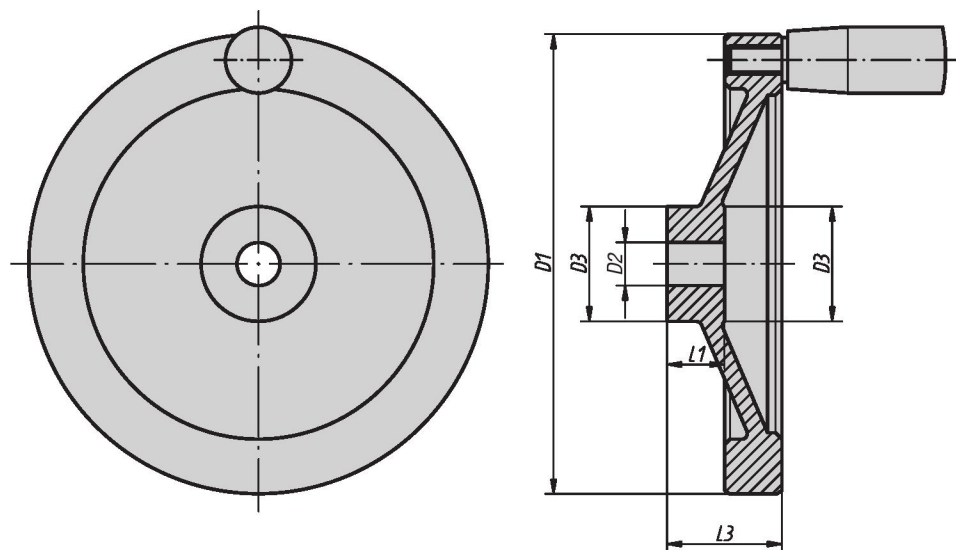
Item No.	D1	D2 line 1	D2 line 2	D3	L1	L3	Revolving cylinder grip
K0161.4080XCN	80	.312	-	25	16	31	ø18 x M6x40
K0161.4080XCO	80	-	.375	25	16	31	ø18 x M6x40
K0161.4100XCO	100	.375	-	31	17	34	ø18 x M6x40
K0161.4100XCP	100	-	.500	31	17	34	ø18 x M6x40
K0161.4125XCO	125	.375	-	30	18	37	ø22 x M8x56
K0161.4125XCP	125	-	.500	30	18	37	ø22 x M8x56
K0161.4140XCP	140	.500	-	34	19	34	ø22 x M8x56
K0161.4140XCQ	140	-	.625	34	19	34	ø22 x M8x56
K0161.4160XCP	160	.500	-	40	20	40	ø26 x M10x80
K0161.4160XCQ	160	-	.625	40	20	40	ø26 x M10x80
K0161.4200XCQ	200	.625	-	50	24	46	ø26 x M10x80
K0161.4200XCR	200	-	.750	50	24	46	ø26 x M10x80
K0161.4250XCR	250	.750	-	50	28	49	ø31 x M12x102
K0161.4250XCV	250	-	.875	50	28	49	ø31 x M12x102



Disc Handwheels

aluminum planed

METRIC
Parts



Material:

Disc handwheel in aluminum;
taper grip handle in black duroplastic PF
31-DIN 7708, center part in galvanized
steel

Type:

Wheel rim turned and polished.

Part Number Example:

K0161.4080X10

On request:

Square hole broached hubs or
powder-coated handwheels.

KIPP Disc Handwheels aluminum, planed, without handle, metric

Item No.	D1	D2 line 1	D2 line 2	D3	L1	L3
K0161.0080X10	80	10	-	25	16	31
K0161.0080X12	80	-	12	25	16	31
K0161.0100X10	100	10	-	31	17	34
K0161.0100X12	100	-	12	31	17	34
K0161.0125X12	125	12	-	30	18	37
K0161.0125X14	125	-	14	30	18	37
K0161.0140X14	140	14	-	34	19	34
K0161.0140X15	140	-	15	34	19	34
K0161.0160X15	160	15	-	40	20	40
K0161.0160X16	160	-	16	40	20	40
K0161.0200X18	200	18	-	50	24	46
K0161.0200X20	200	-	20	50	24	46
K0161.0250X22	250	22	-	50	28	49
K0161.0250X24	250	-	24	50	28	49



Disc Handwheels

aluminum planed

KIPP Disc Handwheels aluminum, planed, with fixed handle, metric

Item No.	D1	D2 line 1	D2 line 2	D3	L1	L3	Fixed cylinder grip
K0161.2080X10	80	10	-	25	16	31	ø18 x M6 x 40
K0161.2080X12	80	-	12	25	16	31	ø18 x M6 x 40
K0161.2100X10	100	10	-	31	17	34	ø18 x M6 x 40
K0161.2100X12	100	-	12	31	17	34	ø18 x M6 x 40
K0161.2125X12	125	12	-	30	18	37	ø21 x M8 x 50
K0161.2125X14	125	-	14	30	18	37	ø21 x M8 x 50
K0161.2140X14	140	14	-	34	19	34	ø21 x M8 x 50
K0161.2140X15	140	-	15	34	19	34	ø21 x M8 x 50
K0161.2160X15	160	15	-	40	20	40	ø26 x M10 x 80
K0161.2160X16	160	-	16	40	20	40	ø26 x M10 x 80
K0161.2200X18	200	18	-	50	24	46	ø26 x M10 x 80
K0161.2200X20	200	-	20	50	24	46	ø26 x M10 x 80
K0161.2250X22	250	22	-	50	28	49	ø28 x M12 x 90
K0161.2250X24	250	-	24	50	28	49	ø28 x M12 x 90

KIPP Disc Handwheels aluminum, planed, with revolving handle, metric

Item No.	D1	D2 line 1	D2 line 2	D3	L1	L3	Revolving cylinder grip
K0161.4080X10	80	10	-	25	16	31	ø18 x M6 x 40
K0161.4080X12	80	-	12	25	16	31	ø18 x M6 x 40
K0161.4100X10	100	10	-	31	17	34	ø18 x M6 x 40
K0161.4100X12	100	-	12	31	17	34	ø18 x M6 x 40
K0161.4125X12	125	12	-	30	18	37	ø22 x M8 x 56
K0161.4125X14	125	-	14	30	18	37	ø22 x M8 x 56
K0161.4140X14	140	14	-	34	19	34	ø22 x M8 x 56
K0161.4140X15	140	-	15	34	19	34	ø22 x M8 x 56
K0161.4160X15	160	15	-	40	20	40	ø26 x M10 x 80
K0161.4160X16	160	-	16	40	20	40	ø26 x M10 x 80
K0161.4200X18	200	18	-	50	24	46	ø26 x M10 x 80
K0161.4200X20	200	-	20	50	24	46	ø26 x M10 x 80
K0161.4250X22	250	22	-	50	28	49	ø31 x M12 x 102
K0161.4250X24	250	-	24	50	28	49	ø31 x M12 x 102