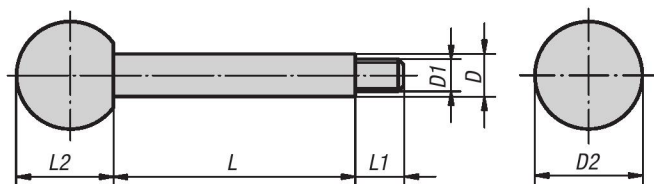


Gear Levers

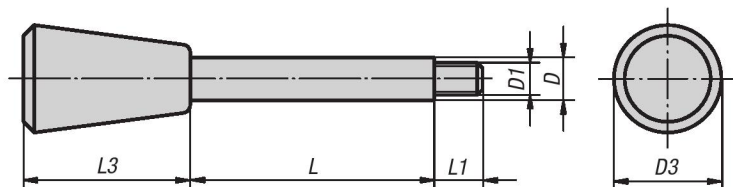
INCH Parts METRIC Parts



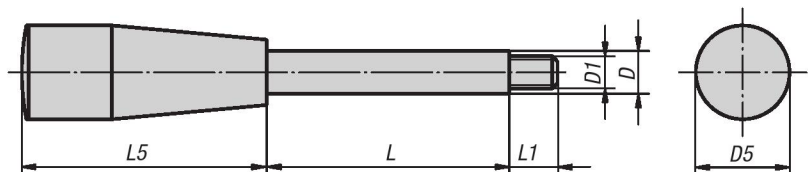
Style A



Style C



Style E



Material:

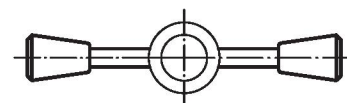
Knobs Duroplast PF 31.
Rod steel 1.0718 or stainless steel 1.4305.

Type:

Duroplastic black, high-gloss polished.
Steel black oxide finish or stainless steel natural finish.

Part Number Example:

K0179.2A2X35
(include length L)



KIPP Gear Levers, style A, inch

Item No. steel	Item No. stainless steel	Style	D	D1	D2	L	L1	L2
K0179.2A2X	K0179.12A2X	A	8	1/4-20	20	35/50/65	9	18
K0179.2A3X	K0179.12A3X	A	10	5/16-18	25	50/65/80/100	13	22.5
K0179.2A4X	K0179.12A4X	A	12	3/8-16	32	65/80/100/125	15	29
K0179.2A5X	K0179.12A5X	A	14	1/2-13	35	80/100/125/160	16	32.5

Gear Levers



KIPP Gear Levers, style C, inch

Item No. steel	Item No. stainless steel	Style	D	D1	D3	L	L1	L3
K0179.4A2X	K0179.14A2X	C	8	1/4-20	20	35/50/65	9	30
K0179.4A3X	K0179.14A3X	C	10	5/16-18	25	50/65/80/100	13	38
K0179.4A4X	K0179.14A4X	C	12	3/8-16	30	65/80/100/125	15	46
K0179.4A5X	K0179.14A5X	C	14	1/2-13	35	80/100/125/160	16	53

KIPP Gear Levers, style E, inch

Item No. steel	Item No. stainless steel	Style	D	D1	D5	L	L1	L5
K0179.6A2X	K0179.16A2X	E	8	1/4-20	17	35/50/65	9	45
K0179.6A3X	K0179.16A3X	E	10	5/16-18	23	50/65/80/100	13	60
K0179.6A4X	K0179.16A4X	E	12	3/8-16	28	65/80/100/125	15	70
K0179.6A5X	K0179.16A5X	E	14	1/2-13	28	80/100/125/160	16	70

KIPP Gear Levers, style A, metric

Item No. steel	Item No. stainless steel	Style	D	D1	D2	L	L1	L2
K0179.208X	K0179.1208X	A	8	M6	20	35/50/65	9	18
K0179.210X	K0179.1210X	A	10	M8	25	50/65/80/100	13	22,5
K0179.212X	K0179.1212X	A	12	M10	32	65/80/100/125	15	29
K0179.214X	K0179.1214X	A	14	M12	35	80/100/125/160	16	32,5

KIPP Gear Levers, style C, metric

Item No. steel	Item No. stainless steel	Style	D	D1	D3	L	L1	L3
K0179.408X	K0179.1408X	C	8	M6	20	35/50/65	9	30
K0179.410X	K0179.1410X	C	10	M8	25	50/65/80/100	13	38
K0179.412X	K0179.1412X	C	12	M10	30	65/80/100/125	15	46
K0179.414X	K0179.1414X	C	14	M12	35	80/100/125/160	16	53

KIPP Gear Levers, style E, metric

Item No. steel	Item No. stainless steel	Style	D	D1	D5	L	L1	L5
K0179.608X	K0179.1608X	E	8	M6	17	35/50/65	9	45
K0179.610X	K0179.1610X	E	10	M8	23	50/65/80/100	13	60
K0179.612X	K0179.1612X	E	12	M10	28	65/80/100/125	15	70
K0179.614X	K0179.1614X	E	14	M12	28	80/100/125/160	16	70