

# Ball Lock Pins

self locking



**Material:**

Grip and push button thermoplastic.  
Steel parts stainless steel.

**Type:**

Grip, black.  
Push button, red  
Steel parts, natural finish.

**Part Number Example:**

K0363.3806050  
(include length L e.g. 050 for L = 50 mm)

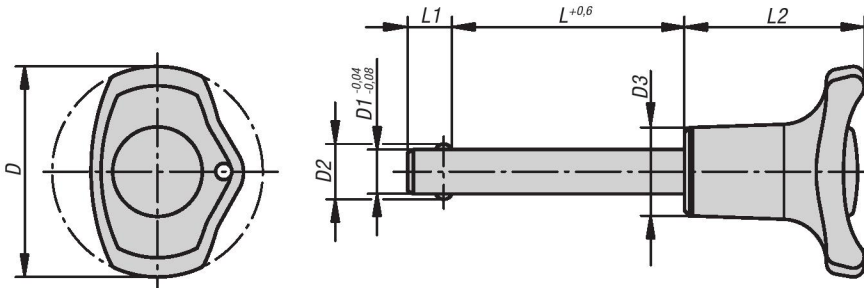
**Note:**

Ball Lock Pins allow instant bolting of two workpieces. Two spring pressure balls automatically lock the pin in place. Pressing the push button will release the ball and efficiently unlock the pin.

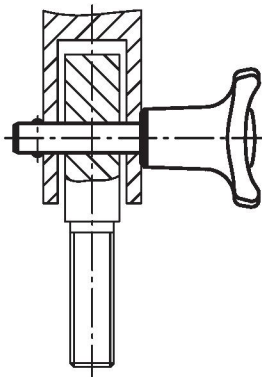
Shearing force double-edged (F) =  $S \cdot \tau \cdot aB$   
max.

**Accessories:**

Safety Helix Cable K0367.10200  
Retaining Cable with eye K0367.....  
Pin Retaining Ring K0367.15/19/23



Application Diagram



**Part Number Example (inch):**

Ball Lock Pin K0363.38CLL08  
(include length L,  
e.g. L08 for L = .5")

.5 = L08  
.75 = L12  
1 = L16  
1.25 = L20  
1.5 = L24  
1.75 = L28  
2 = L32  
2.5 = L36  
3 = L40

## KIPP Ball Lock Pins, self-locking, inch

Item No.	D	D1	D2	D3	L	L1	L2	Receiving hole H11	Shearing force double shear max. kN
K0363.38CL***	38	3/16	5.25	16	.5/.75/1/1.25	6	32.5	3/16	13
K0363.38CM***	38	1/4	7.2	16	.5/.75/1/1.25/1.5/1.75/2	6.9	32.5	1/4	24
K0363.38CN***	38	5/16	9.5	16	1/1.25/1.5/1.75/2	7.9	32.5	5/16	38
K0363.47C0***	47	3/8	11.5	23	1/1.25/1.5/1.75/2	8.8	40	3/8	54
K0363.47CU***	47	7/16	13	23	1/1.25/1.5/1.75/2/2.5/3	9.7	40	7/16	74
K0363.47CP***	47	1/2	15	23	1/1.25/1.5/1.75/2/2.5/3	10	40	1/2	96
K0363.47CQ***	47	5/8	19	23	1/1.25/1.5/1.75/2/2.5/3	13.3	40	5/8	150

## KIPP Ball Lock Pins, self-locking, metric

Item No.	D	D1	D2	D3	L	L1	L2	Receiving hole H11	Shearing force double shear max. kN
K0363.3805***	38	5	5,5	16	10/15/20/25/30	6	32,5	5	15
K0363.3806***	38	6	6,85	16	10/15/20/25/30/35/40/45/50	7	32,5	6	22
K0363.3808***	38	8	9,5	16	20/25/30/35/40/45/50	8	32,5	8	38
K0363.4710***	47	10	12	23	20/25/30/35/40/45/50/60	9	40	10	60
K0363.4712***	47	12	14,5	23	25/30/35/40/45/50/60/70/80	10	40	12	86
K0363.4716***	47	16	19	23	30/35/40/45/50/60/70/80	13	40	16	153