

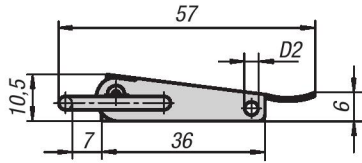


Latches

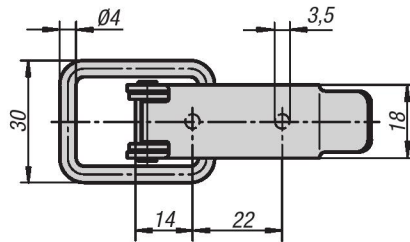
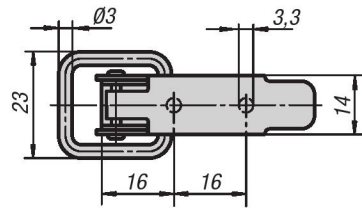
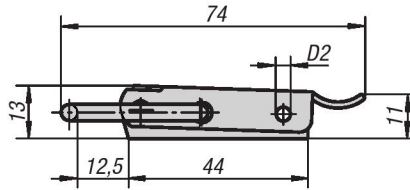
with draw bail

METRIC
Parts

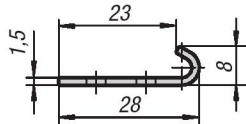
latch
Style A



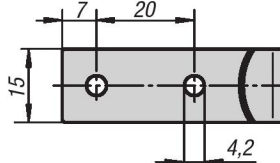
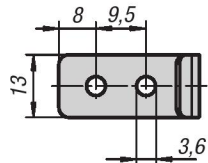
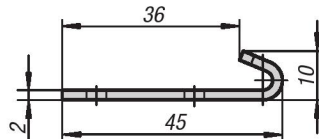
latch
Style B



catch plate
Style A



catch plate
Style B



Material:

Steel or stainless steel 1.4301

Type:

Galvanized and blue chromate.
stainless steel natural finish.

Part Number Example:

Latch K0044.1330571
Catch plate K0044.9136281

Note:

Latches with draw bail for safe holding and locking of hatches, container lids, machine cladding etc. By exceeding the dead center they resist vibration.

The locking force is applied by drawing on the bail.

The hole D2 can be used to secure against unintentional opening or attaching an official lead seal.

The latches can be screwed down or riveted.

Order catch plates separately.

The retaining force F1 applies to the latch, not the catch plate.

KIPP Latches with draw bail, metric

Item No. steel	Item No. stainless steel	Style	D2	Retaining force F1 N
K0044.1330571	K0044.1330572	A	2,8	1000
K0044.2350741	K0044.2350742	B	3,2	2000

KIPP Catch plate, metric

Item No. steel	Item No. stainless steel	Style
K0044.9136281	K0044.9136282	A
K0044.9242451	K0044.9242452	B