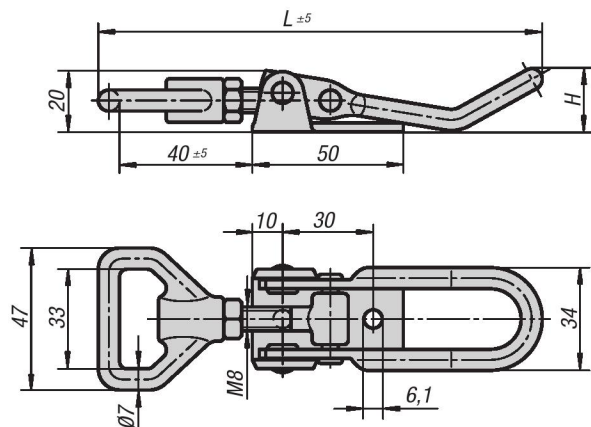


# Adjustable Latches

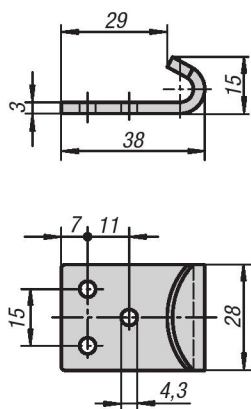


METRIC  
Parts

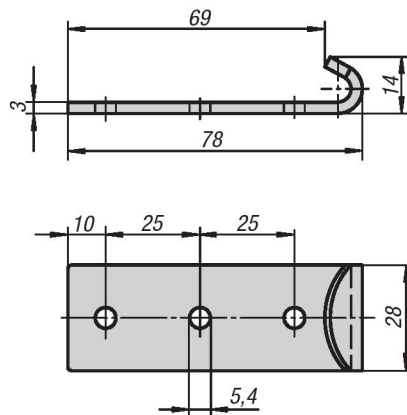
latch  
Style A



catch plate  
Style A



catch plate  
Style B



## Material:

Steel or stainless steel 1.4301

## Type:

Galvanized and blue chromate.  
stainless steel natural finish.

## Part Number Example:

Latch K0051.1611451

Catch plate K0051.9143381

## Note:

Adjustable latches are safe locking systems for industrial applications. By exceeding the dead center they resist vibration.

After the bail engages with the catch plate, by pushing the lever down the parts to be locked can be drawn together by up to 15 mm. To compensate for tolerances or to create enough tension the bail length can be adjusted using the M8 spindle.

The latches can be screwed down or riveted.

Order the required catch plate version separately.

The retaining force F1 applies to the latch, not the catch plate.

## On request:

Lockable version with padlock bracket.

## KIPP Adjustable Latches, metric

Item No. steel	Item No. stainless steel	Style	H	L	Retaining force F1 N
K0051.1611451	K0051.1611452	A	21	145	6500
K0051.1611681	K0051.1611682	A	36	168	6500

## KIPP Catch plate, metric

Item No. steel	Item No. stainless steel	Style
K0051.9143381	K0051.9143382	A
K0051.9254781	K0051.9254782	B