

84A3-3 SERIES (FIXED LOWER JAW)

Cam Type Sheet Metal Grippers | Ordering Information

Fixed Lower & 90° Jaw

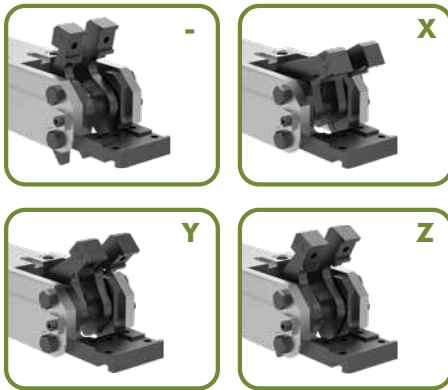
Sensors, Gripper Teeth & Mounting (See next page)

84A3 - **31** **D5** **S** **SF** **SB** - **T** • | **High Temperature**

Jaw Opening Options

Description

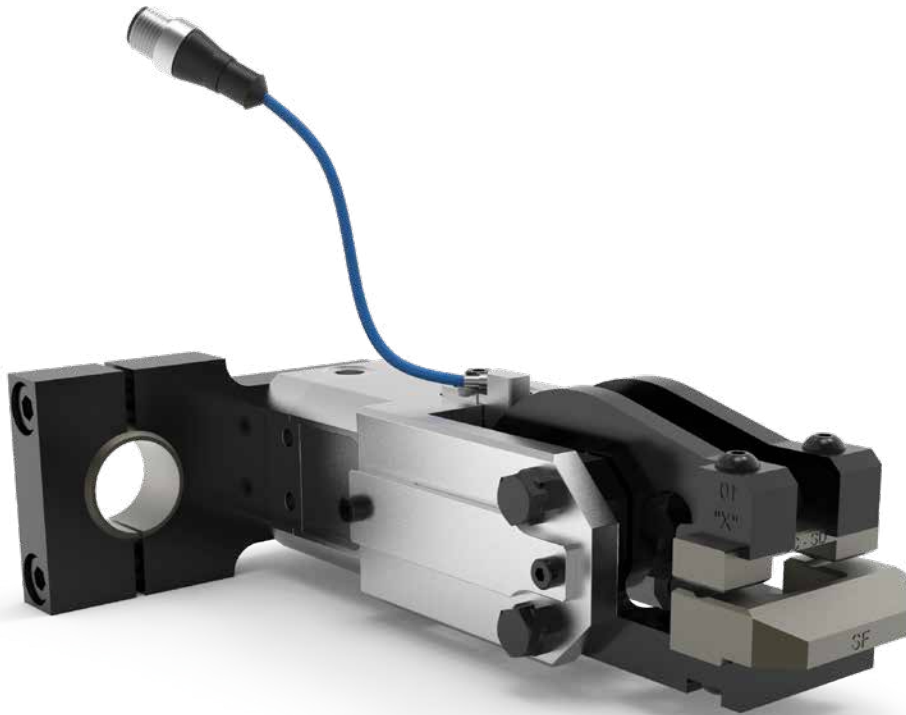
- 76° Jaw Opening (Standard)
- X 30° Jaw Opening
- Y 45° Jaw Opening
- Z 60° Jaw Opening



Jaw Arrangement Options

Description

- 30 Double Upper, Straight Design, Drop Jaw
- 31 Double Upper, Straight Design
- 32 Double Upper, 90° Design
- 34 Single Upper, Right, Straight Design
- 35 Double Upper, Narrow Jaw, Straight Design
- 36 Double Upper, Extended Jaw
- 37 Double Upper, 90° Design
- 38 Double Upper, Narrow Jaw, 90° Design
- 39 Single Upper, Left, Straight Design



Specifications	Unit	
Piston	mm	32
Actuation Time (open/close)	sec	0,2
Air Consumption per Double Stroke at 5 bar	L	0,4

84A3-3 SERIES (FIXED LOWER JAW)

Cam Type Sheet Metal Grippers | Ordering Information

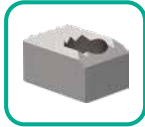
Gripper Teeth, Points and Crown Options (Upper and Lower)

Steel Teeth

- 00** None
- AA** 14,9x21x12mm - 8JZ-014-3
- AH** 14,9x14x14mm - 8JZ-001-1
- AL** 14,9x14,9x9,8mm - 8JZ-003-1
- AC** 14,9x14x12mm - 8JZ-043-1
- AG** 14,9x14x12mm - 8JZ-050-1
- BK** 14,9x21x11mm - 8JZ-066-1

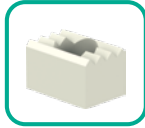


High Temperature
AS 8JZ-094-1



Plastic Teeth*

- 00** None
 - KA** 8JZ-021-1
 - KC** 8JZ-023-1 (Upper)
- *Not suitable for High Temperature applications



Shims for gripper teeth available
Order Separately **8SB-003-1**
Dimensions: 14,8 x 13 x 0,15 mm

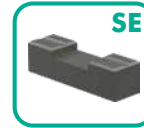
Steel Points (Upper only)

- 00** None
- PA** 8MJ-1001-1
- PB** 8MJ-1002-1
- PC** 8MJ-1003-1



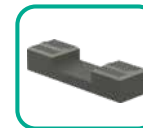
Crown Teeth - Concave (Lower Only)

- 00** None
- SE** 8JZ-019-1
(Not for use with A8 and GN Sensor)
- SF** 8JZ-020-3
- SH** 8JZ-048-1



Crown Teeth - Convex (Upper Only)

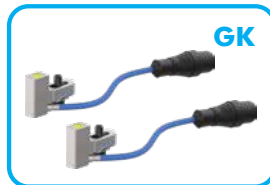
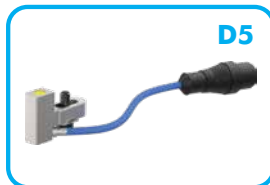
- SB** Mat. = 0,5-1mm - 8JZ-016-2
- SD** Mat. = 1-1,5mm - 8JZ-018-2



Sensor Options (not suitable for High Temperature applications)

Description

- 00** None
- KL** Position Control Set, Left for 76° Opening Angle - 8EA-022-4
- KR** Position Control Set, Right for 76° Opening Angle - 8EA-022-4
- A8** Workpiece Control, Switching Distance 7mm
8EA-092-1 (for 84A3-30/31/32/36)
- D5** Double Sheet Control, M12x1 Plug - 8EA-087-1
- GK** 2X D5
- GN** 1X A8 + 1X D5 (for 84A3-30/31/32/36 only)



Shims for Sensor A8 available
Order Separately **8MB-003-1**



Cable support for Sensing Systems **A8**
Order Separately **8MA-175-1**
Mounted on lower side of gripper (for 84A3-31/36 only)

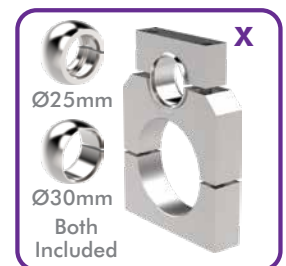
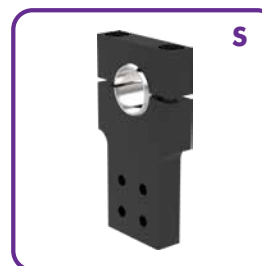


Cover for Sensing Systems **D5, GK, GN**
Order Separately **82ZB-185-1**

Mounting Options

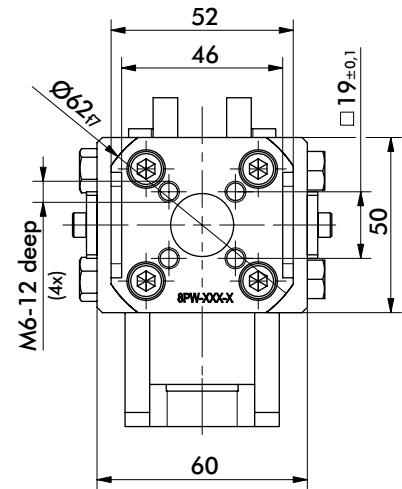
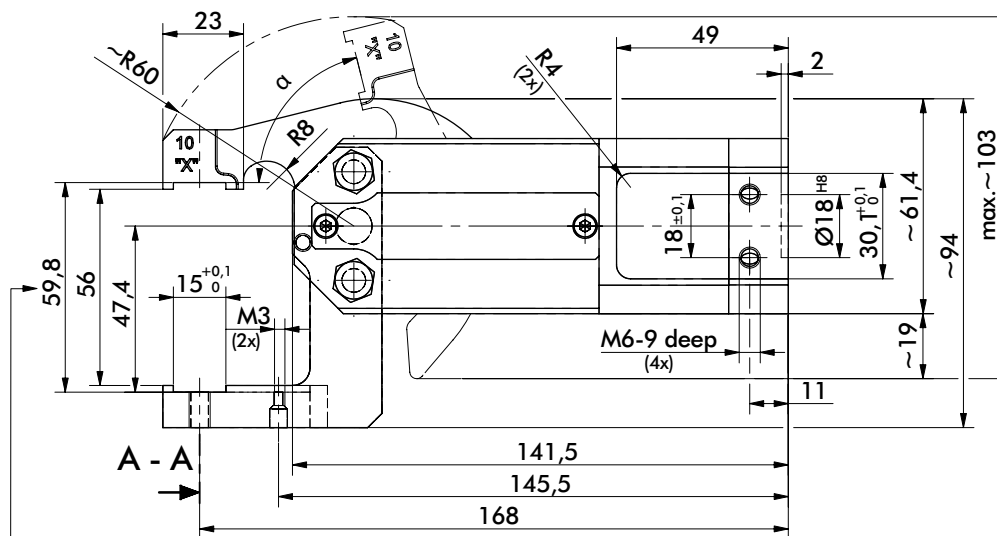
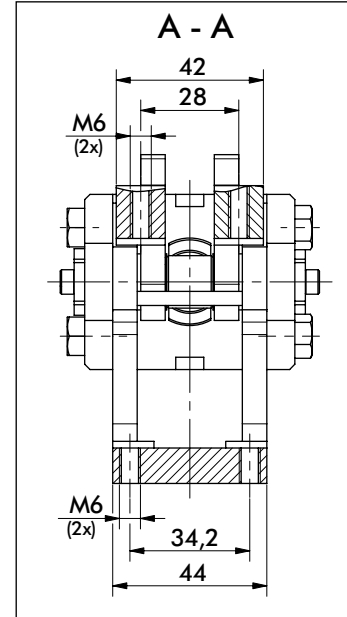
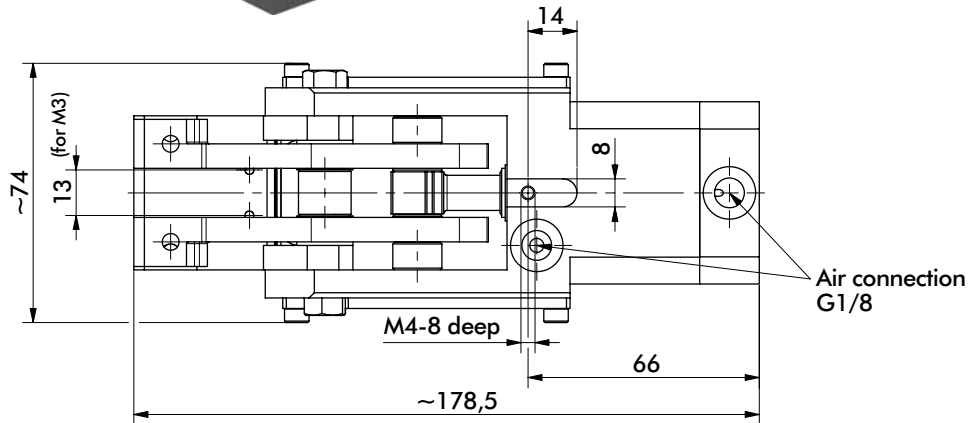
Description

- 0** None
- A** Rear Flange - 8MA-006-1
- 3** Rear Flange - 8MA-273-1
- R** Guards - 8MH-046-1
(for 84A3-31/34/35/39 only)
- S** Rear Swivel Ball - 82ZB-007-1
- X** On-Body Swivel Ball
82ZB-033-2



84A3.30 SERIES (FIXED LOWER JAW)

Cam Type Sheet Metal Grippers | Dimensions and Technical Specifications



Addition of gripper teeth height and thickness of the clamped plate must be 59,8 mm. It might be necessary to use shim plates or to grind off the gripper teeth.

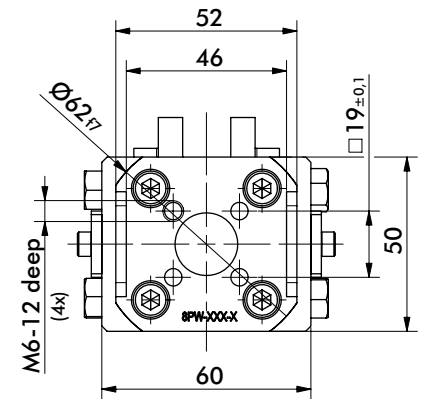
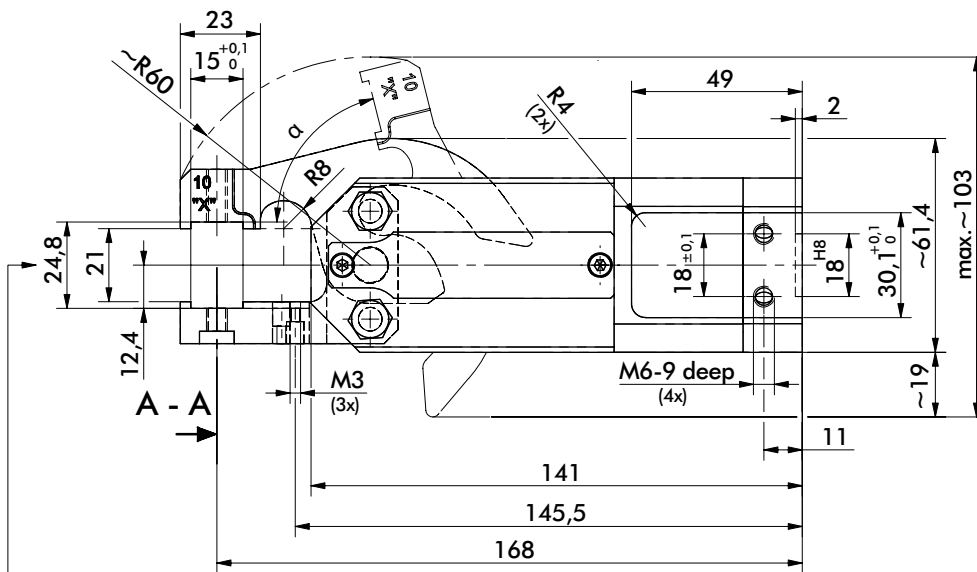
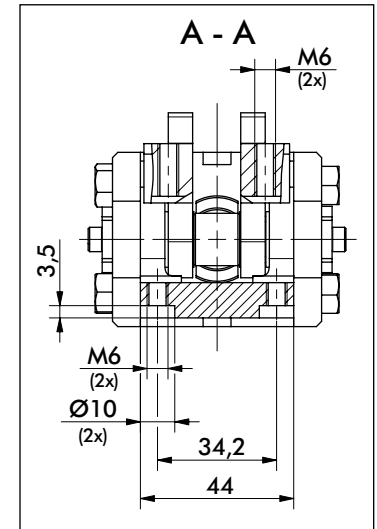
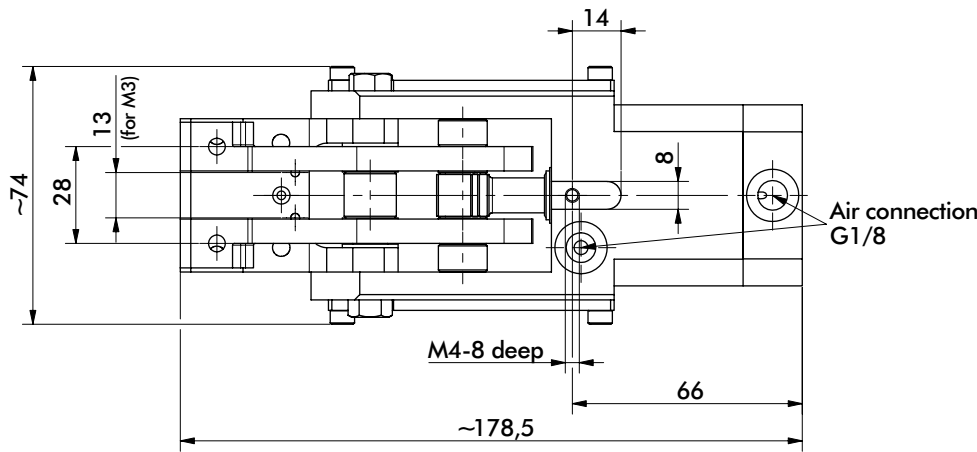
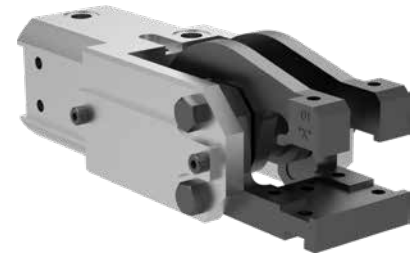
Medium air, max. 6 bar. Operation with oil-free air is permissible.

NOTE! Any extension of the moveable or fixed gripper jaws as well as the additional attachment of weights will void warrantee.

Model 84A3.30	Opening Angle α	Clamping force at 5 bar ~N [lbs]	Weight Kg [lbs]
-	76°	1500 [337]	1,4 [3.09]
X	30°		
Y	45°		
Z	60°		

84A3.31 SERIES (FIXED LOWER JAW)

Cam Type Sheet Metal Grippers | Dimensions and Technical Specifications



Medium air, max. 6 bar. Operation with oil-free air is permissible.

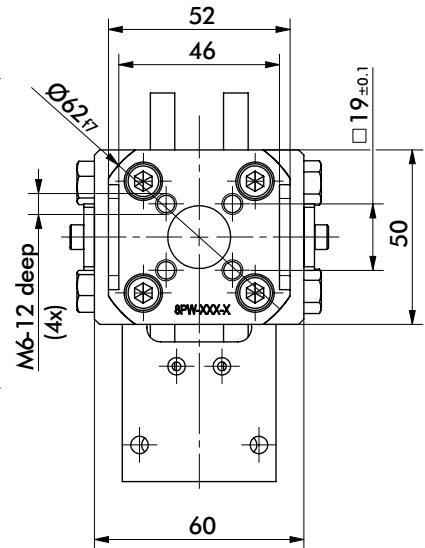
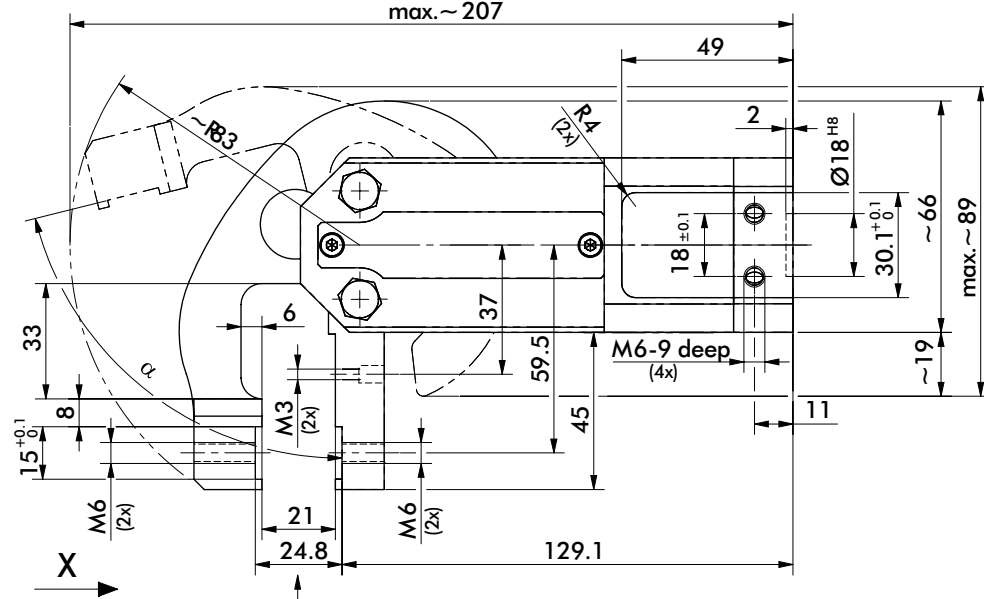
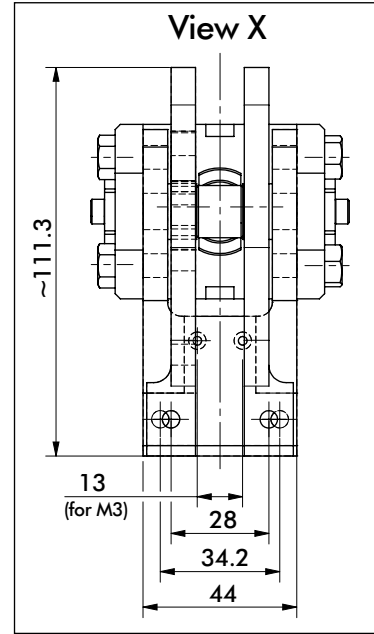
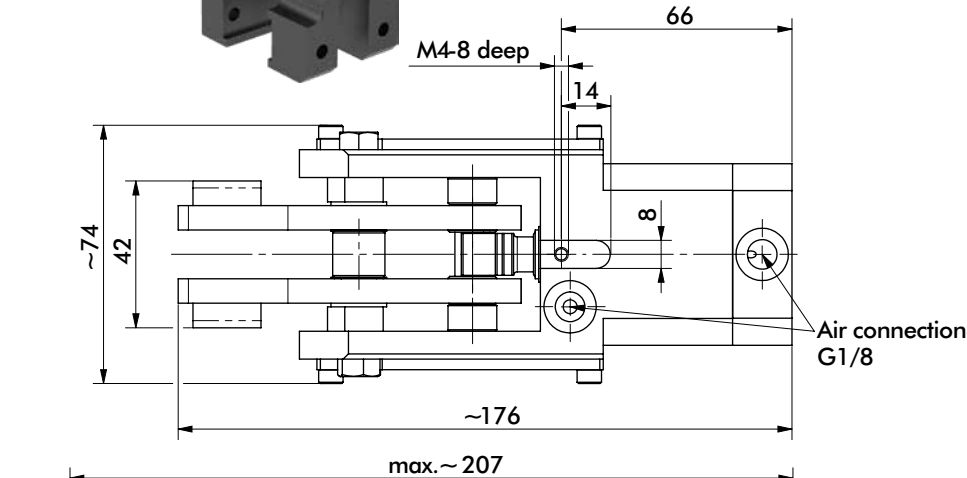
NOTE! Any extension of the moveable or fixed gripper jaws as well as the additional attachment of weights will void warrantee.

Addition of gripper teeth height and thickness of the clamped plate must be 24,8 mm. It might be necessary to use shim plates or to grind off the gripper teeth.

Model 84A3.31	Opening Angle α	Clamping force at 5 bar ~N [lbs]	Weight Kg [lbs]
-	76°	1500 [337]	1,3 [2.87]
X	30°		
Y	45°		
Z	60°		

84A3.32 SERIES (FIXED LOWER JAW)

Cam Type Sheet Metal Grippers | Dimensions and Technical Specifications



Addition of gripper teeth height and thickness of the clamped plate must be 24,8 mm. It might be necessary to use shim plates or to grind off the gripper teeth.

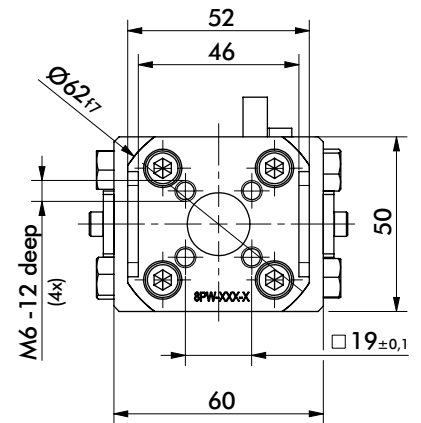
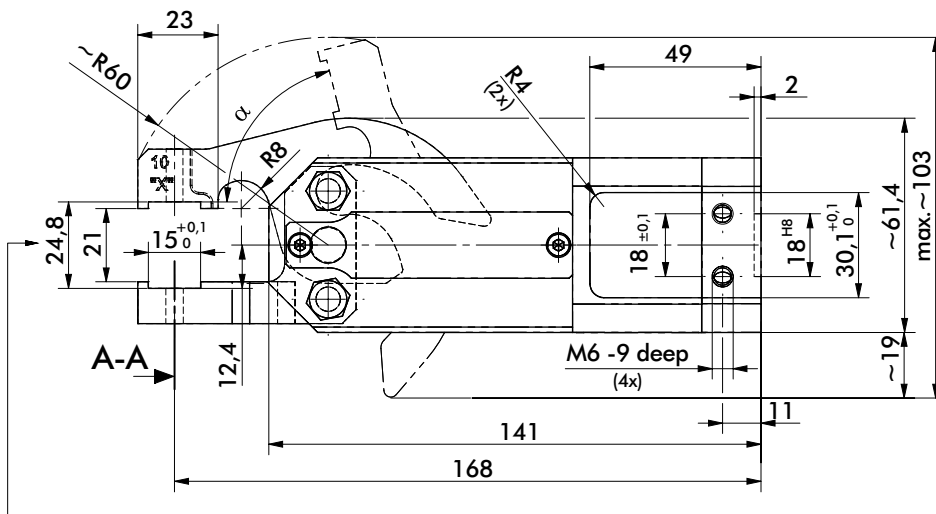
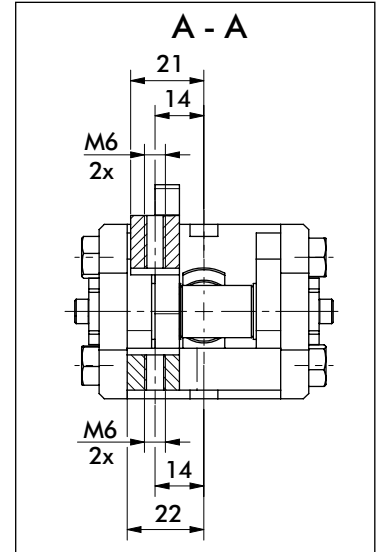
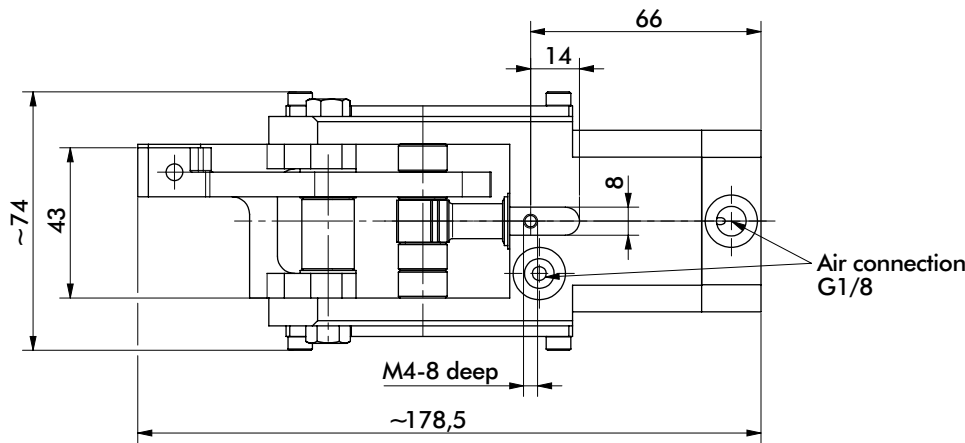
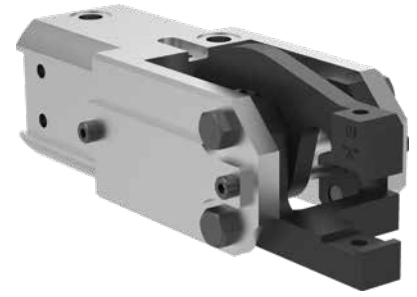
Medium air, max. 6 bar. Operation with oil-free air is permissible.

NOTE! Any extension of the moveable or fixed gripper jaws as well as the additional attachment of weights will void warrantee.

Model 84A3.32	Opening Angle α	Clamping force at 5 bar ~N [lbs]	Weight Kg [lbs]
-	76°	950 [214]	1,6 [3.53]
X	30°		
Y	45°		
Z	60°		

84A3.34 SERIES (FIXED LOWER JAW)

Cam Type Sheet Metal Grippers | Dimensions and Technical Specifications



Addition of gripper teeth height and thickness of the clamped plate must be 24,8 mm. It might be necessary to use shim plates or to grind off the gripper teeth.

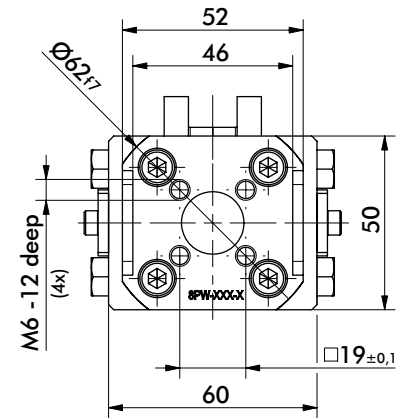
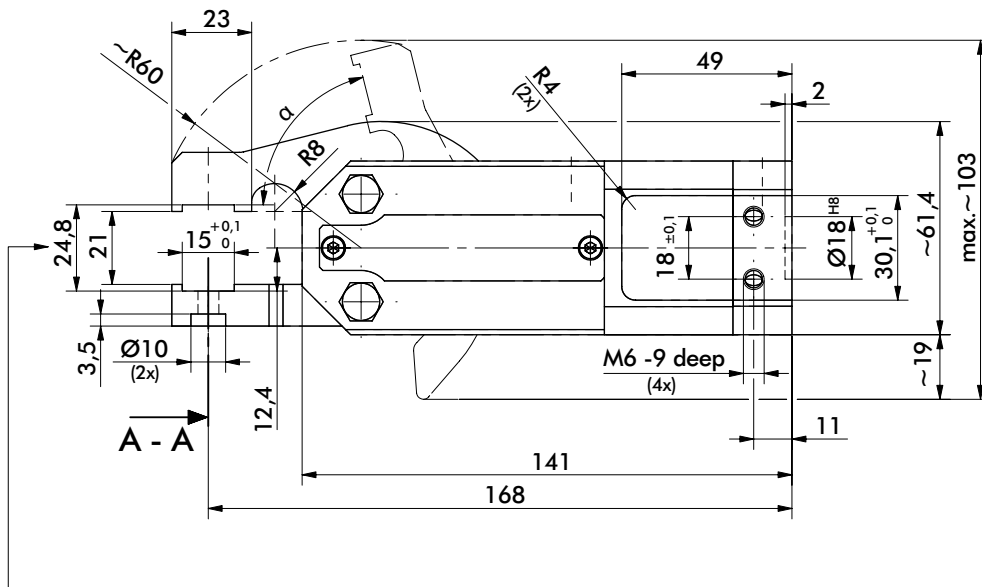
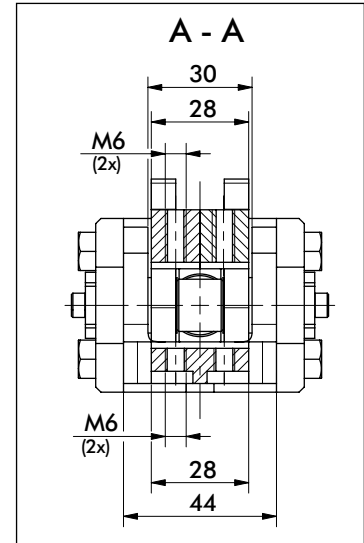
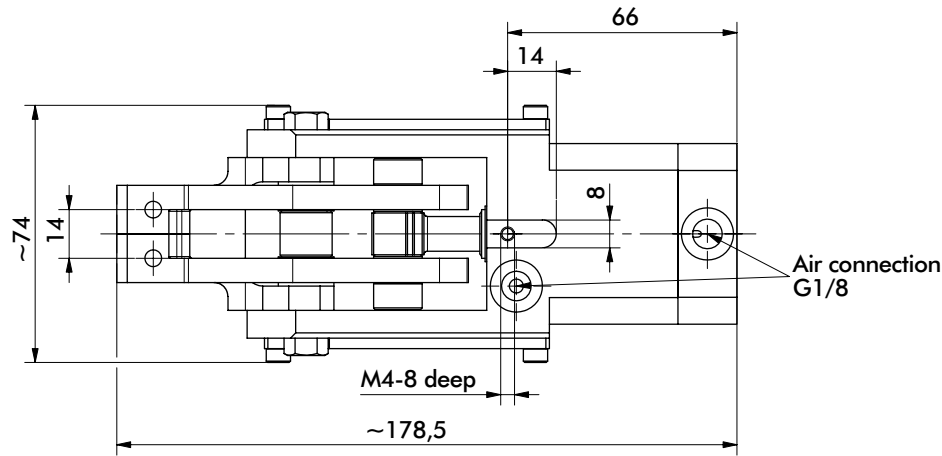
Medium air, max. 6 bar. Operation with oil-free air is permissible.

NOTE! Any extension of the moveable or fixed gripper jaws as well as the additional attachment of weights will void warrantee.

Model 84A3.34	Opening Angle α	Clamping force at 5 bar ~N [lbs]	Weight Kg [lbs]
-	76°	1500 [337]	1,3 [2.87]
X	30°		
Y	45°		
Z	60°		

84A3.35 SERIES (FIXED LOWER JAW)

Cam Type Sheet Metal Grippers | Dimensions and Technical Specifications



Addition of gripper teeth height and thickness of the clamped plate must be 24,8 mm. It might be necessary to use shim plates or to grind off the gripper teeth.

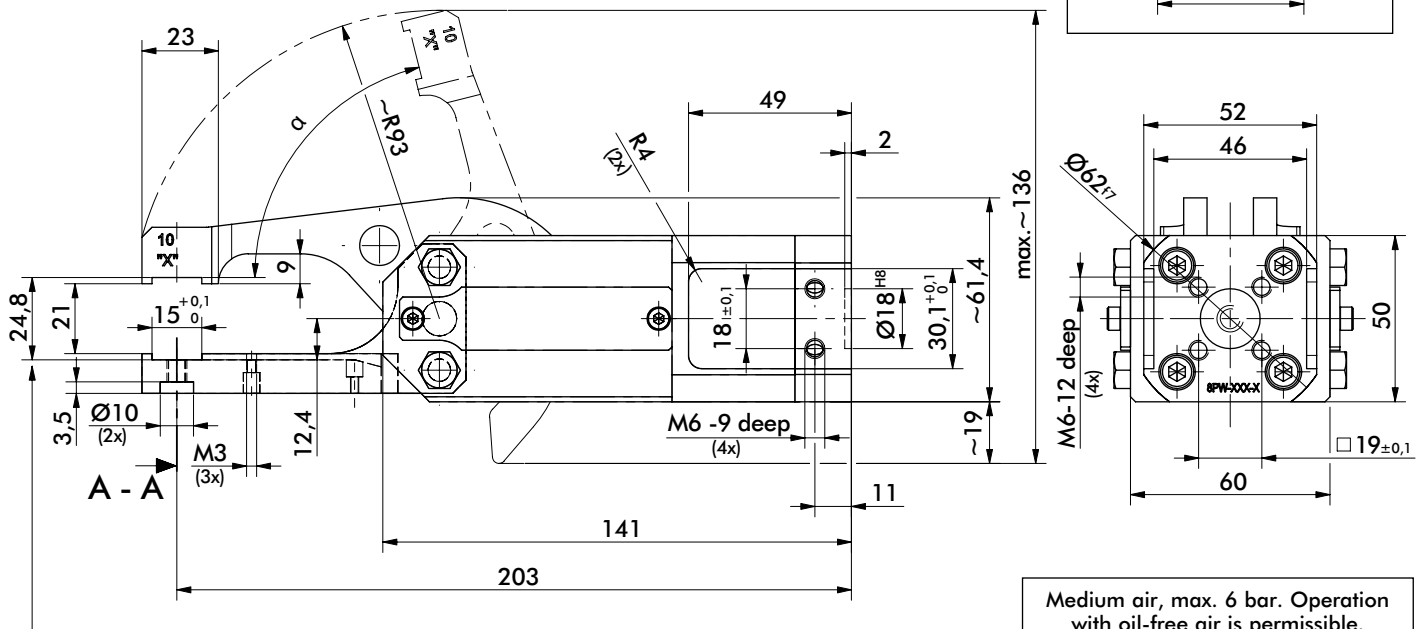
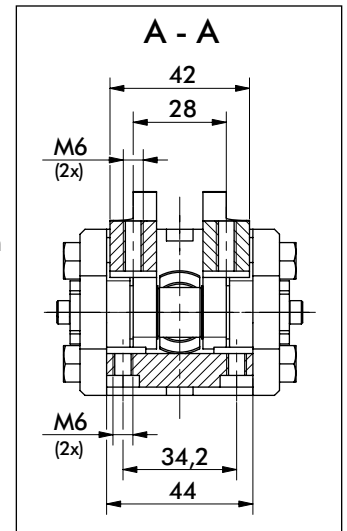
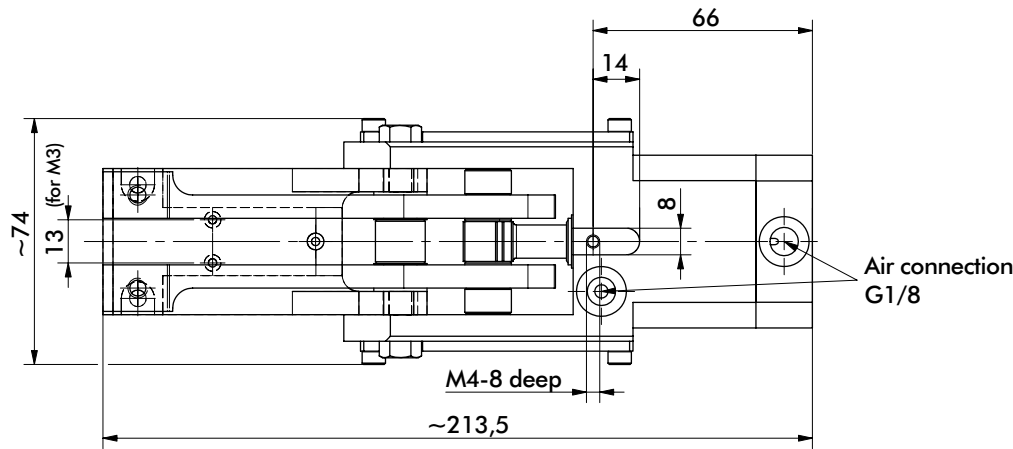
Medium air, max. 6 bar. Operation with oil-free air is permissible.

NOTE! Any extension of the moveable or fixed gripper jaws as well as the additional attachment of weights will void warrantee.

Model 84A3.35	Opening Angle α	Clamping force at 5 bar ~N [lbs]	Weight Kg [lbs]
-	76°	1500 [337]	1,3 [2.87]
X	30°		
Y	45°		
Z	60°		

84A3.36 SERIES (FIXED LOWER JAW)

Cam Type Sheet Metal Grippers | Dimensions and Technical Specifications



Medium air, max. 6 bar. Operation with oil-free air is permissible.

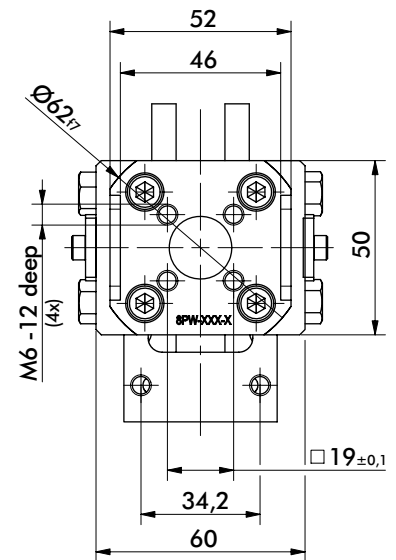
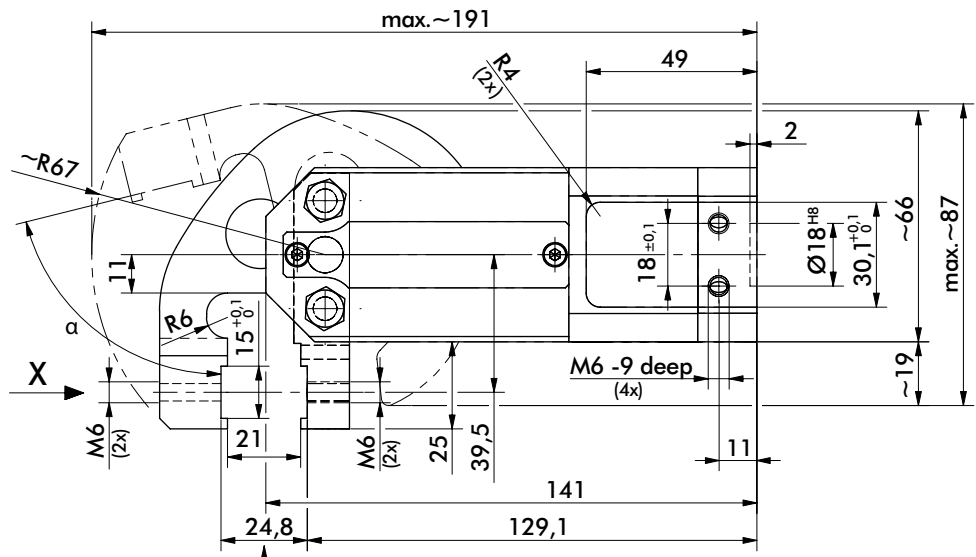
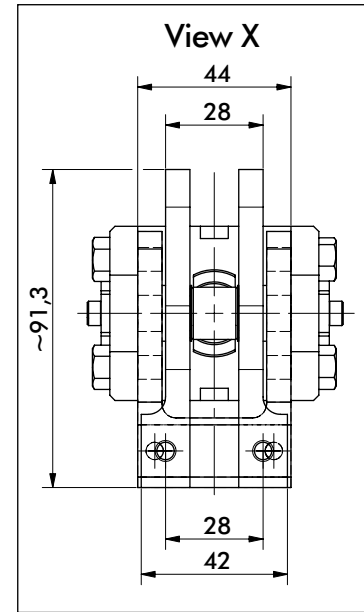
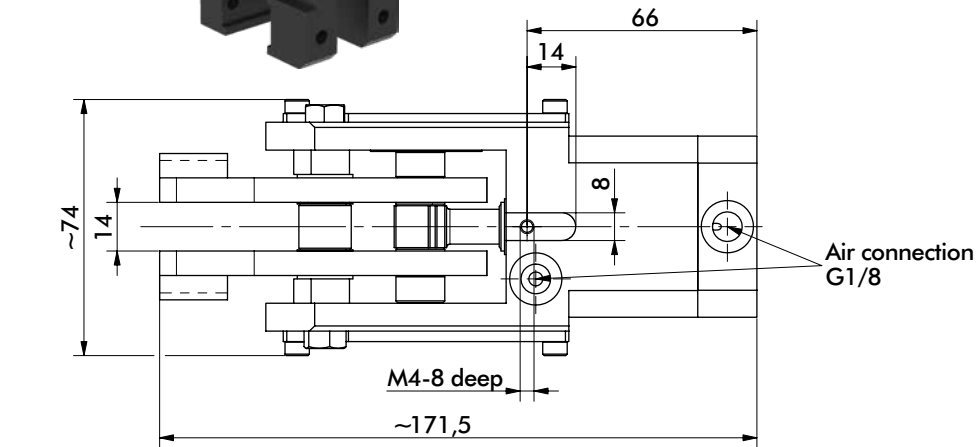
Addition of gripper teeth height and thickness of the clamped plate must be 24,8 mm. It might be necessary to use shim plates or to grind off the gripper teeth.

NOTE! Any extension of the moveable or fixed gripper jaws as well as the additional attachment of weights will void warrantee.

Model 84A3.36	Opening Angle α	Clamping force at 5 bar ~N [lbs]	Weight Kg [lbs]
-	76°	570 [128]	1,55 [3.42]
X	30°		
Y	45°		
Z	60°		

84A3.37 SERIES (FIXED LOWER JAW)

Cam Type Sheet Metal Grippers | Dimensions and Technical Specifications



Addition of gripper teeth height and thickness of the clamped plate must be 24,8 mm. It might be necessary to use shim plates or to grind off the gripper teeth.

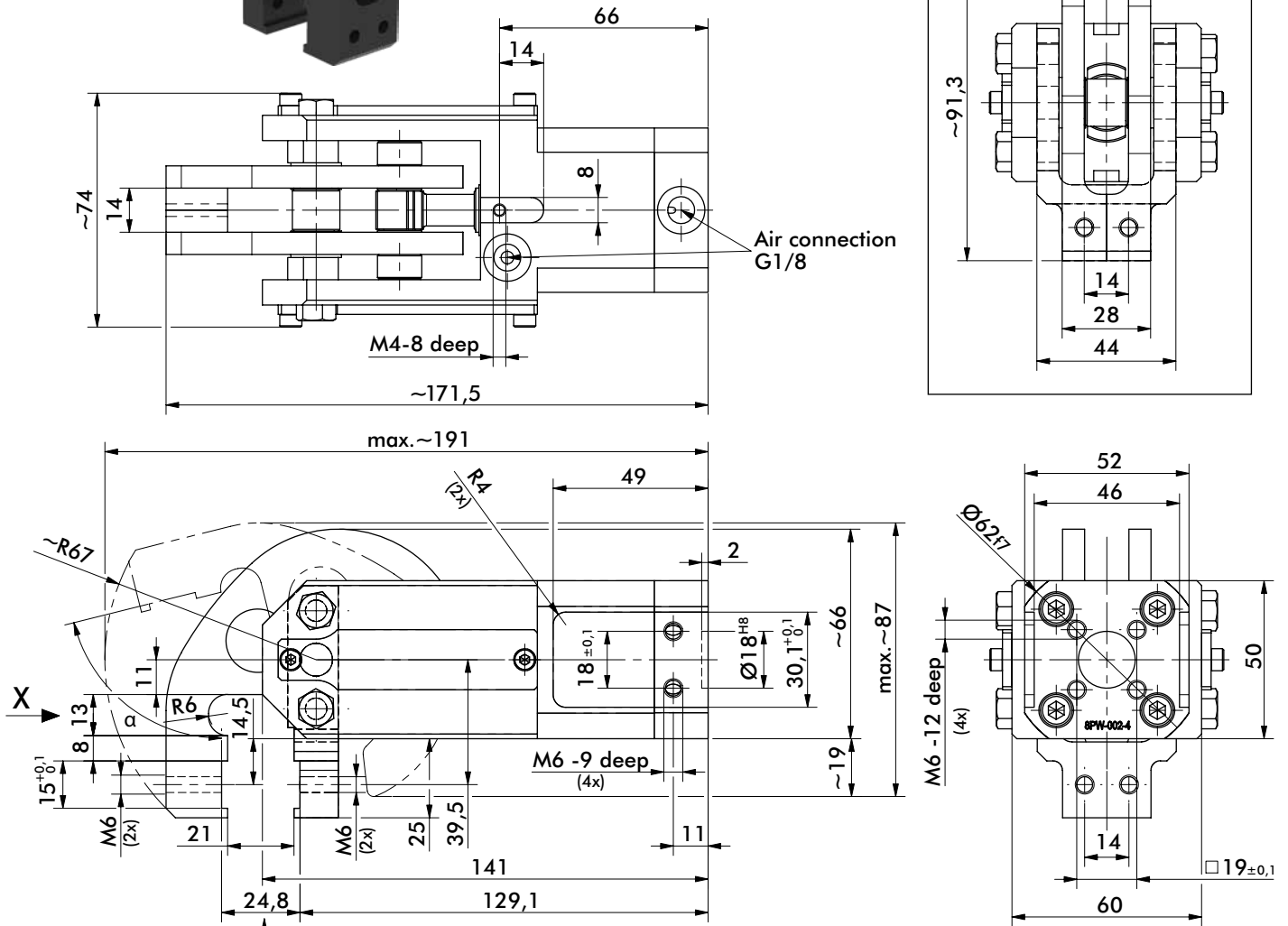
Medium air, max. 6 bar. Operation with oil-free air is permissible.

NOTE! Any extension of the moveable or fixed gripper jaws as well as the additional attachment of weights will void warrantee.

Model 84A3.37	Opening Angle α	Clamping force at 5 bar ~N [lbs]	Weight Kg [lbs]
-	76°	1600 [360]	1,45 [3.20]
X	30°		
Y	45°		
Z	60°		

84A3.38 SERIES (FIXED LOWER JAW)

Cam Type Sheet Metal Grippers | Dimensions and Technical Specifications



Addition of gripper teeth height and thickness of the clamped plate must be 24,8 mm. It might be necessary to use shim plates or to grind off the gripper teeth.

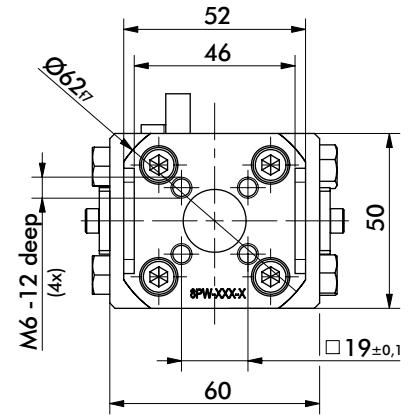
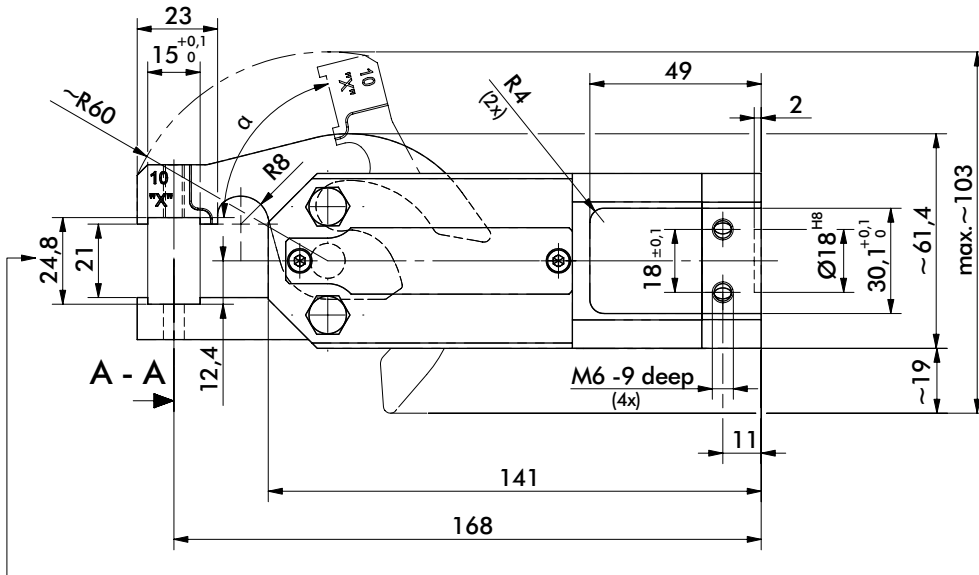
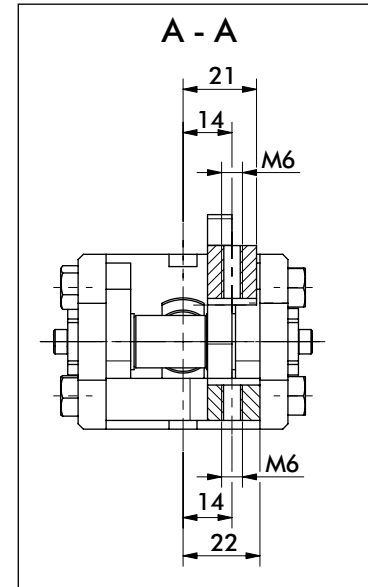
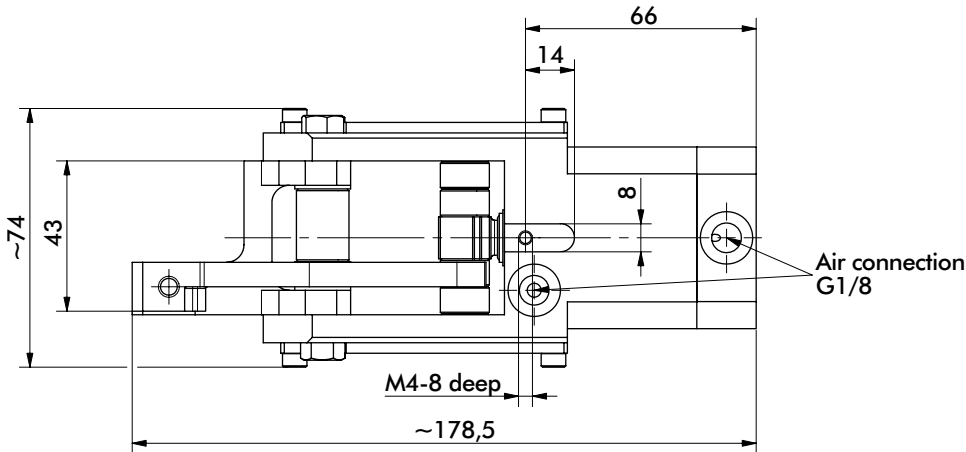
Medium air, max. 6 bar. Operation with oil-free air is permissible.

NOTE! Any extension of the moveable or fixed gripper jaws as well as the additional attachment of weights will void warrantee.

Model 84A3.38	Opening Angle α	Clamping force at 5 bar ~N [lbs]	Weight Kg [lbs]
-	76°	1600 [360]	1,4 [3.09]
X	30°		
Y	45°		
Z	60°		

84A3.39 SERIES (FIXED LOWER JAW)

Cam Type Sheet Metal Grippers | Dimensions and Technical Specifications



Addition of gripper teeth height and thickness of the clamped plate must be 24,8 mm. It might be necessary to use shim plates or to grind off the gripper teeth.

Medium air, max. 6 bar. Operation with oil-free air is permissible.

NOTE! Any extension of the moveable or fixed gripper jaws as well as the additional attachment of weights will void warrantee.

Model 84A3.39	Opening Angle α	Clamping force at 5 bar ~N [lbs]	Weight Kg [lbs]
-	76°	1500 [337]	1,3 [2.87]
X	30°		
Y	45°		
Z	60°		

84A3-3 SERIES (MOVEABLE LOWER JAWS)

Cam Type Sheet Metal Grippers | Ordering Information

Moveable Lower Jaw

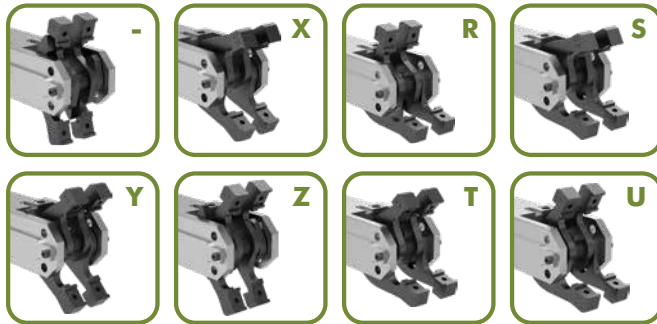
Sensors, Gripper Teeth & Mounting (See next page)

84A3 **X** **33** **00** **A** **AL** **AL** - **T** • **High Temperature**

Jaw Opening Options

Description

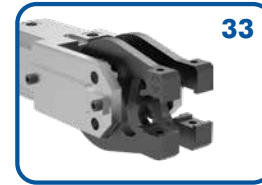
- 76° Jaw Opening (Symmetrical) **R** 76° Upper/15° Lower Jaw
- X** 30° Jaw Opening (Symmetrical) **S** 30° Upper/15° Lower Jaw
- Y** 45° Jaw Opening (Symmetrical) **T** 45° Upper/15° Lower Jaw
- Z** 60° Jaw Opening (Symmetrical) **U** 60° Upper/15° Lower Jaw



Jaw Arrangement Options

Description

- 33** Double Symmetrical, Straight Design -or- 15° Lower, Double Upper, Straight Design



Specifications	Unit	
Piston	mm	32
Actuation Time (open/close)	sec	0.2
Air Consumption per Double Stroke at 5 bar	L	0.4

84A3-3 SERIES (MOVEABLE LOWER JAWS)

Cam Type Sheet Metal Grippers | Ordering Information

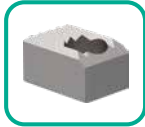
Gripper Teeth, Points and Crown Options (Upper and Lower)

Steel Teeth

- 00** None
- AA** 14,9x21x12mm - 8JZ-014-3
- AH** 14,9x14x14mm - 8JZ-001-1
- AL** 14,9x14,9x9,8mm - 8JZ-003-1
- AC** 14,9x14x12mm - 8JZ-043-1
- AG** 14,9x14x12mm - 8JZ-050-1
- BK** 14,9x21x11mm - 8JZ-066-1

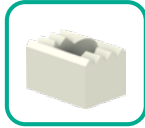


High Temperature
AS 8JZ-094-1



Plastic Teeth*

- 00** None
 - KA** 8JZ-021-1
 - KC** 8JZ-023-1 (Upper)
- *Not suitable for High Temperature applications



Shims for gripper teeth available
Order Separately **8SB-003-1**
Dimensions: 14,8 x 13 x 0,15 mm

Steel Points (Upper only)

- 00** None
- PA** 8MJ-1001-1
- PB** 8MJ-1002-1
- PC** 8MJ-1003-1



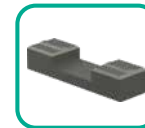
Crown Teeth - Concave (Lower Only)

- 00** None
- SE** 8JZ-019-1
- SF** 8JZ-020-3
- SH** 8JZ-048-1



Crown Teeth - Convex (Upper Only)

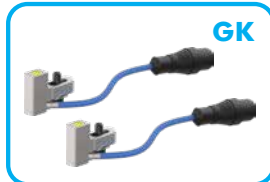
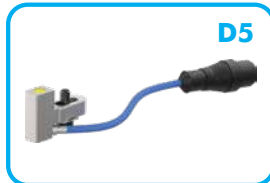
- SB** Mat. = 0,5-1mm - 8JZ-016-2
- SD** Mat. = 1-1,5mm - 8JZ-018-2



Sensor Options (not suitable for High Temperature applications)

Description

- 00** None
- KL** Position Control Set, Left for 76° Opening Angle - 8EA-022-4
- KR** Position Control Set, Right for 76° Opening Angle - 8EA-022-4
- D5** Double Sheet Control, M12x1 Plug - 8EA-087-1
- GK** 2X D5

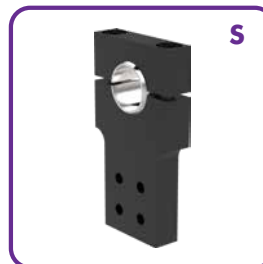


Cover for Sensing Systems **D5, GK**
Order Separately **82ZB-185-1**

Mounting Options

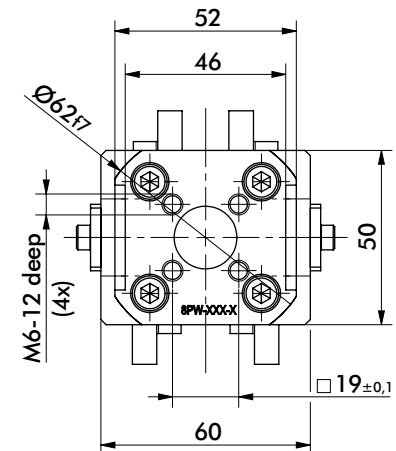
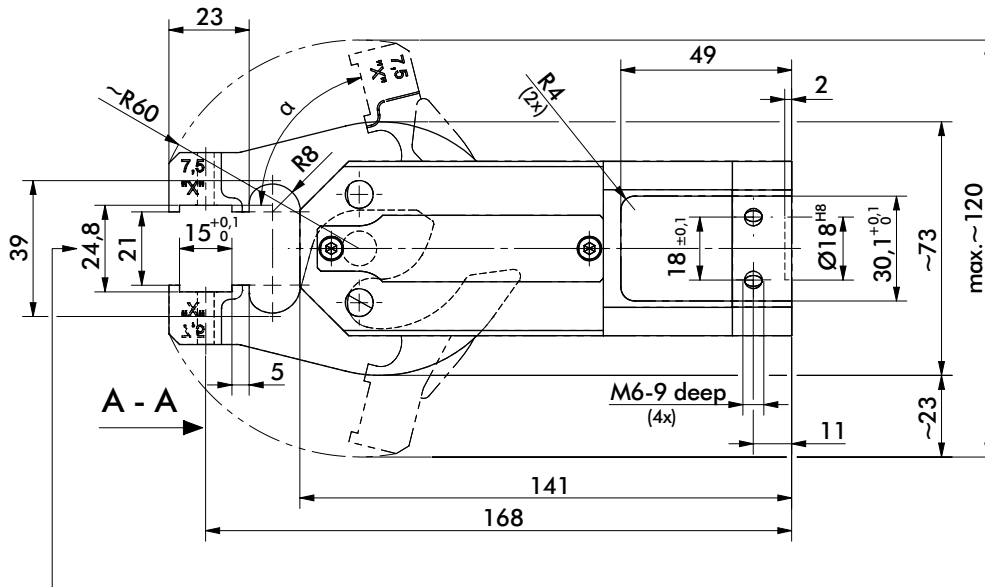
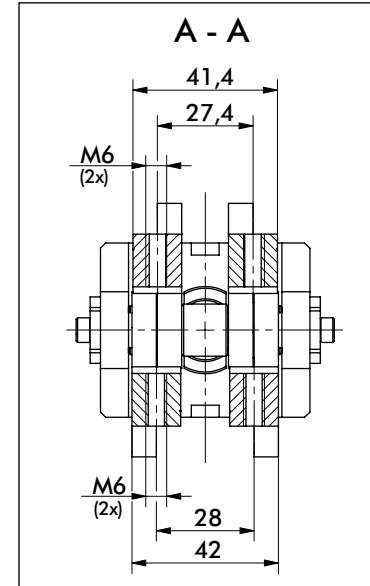
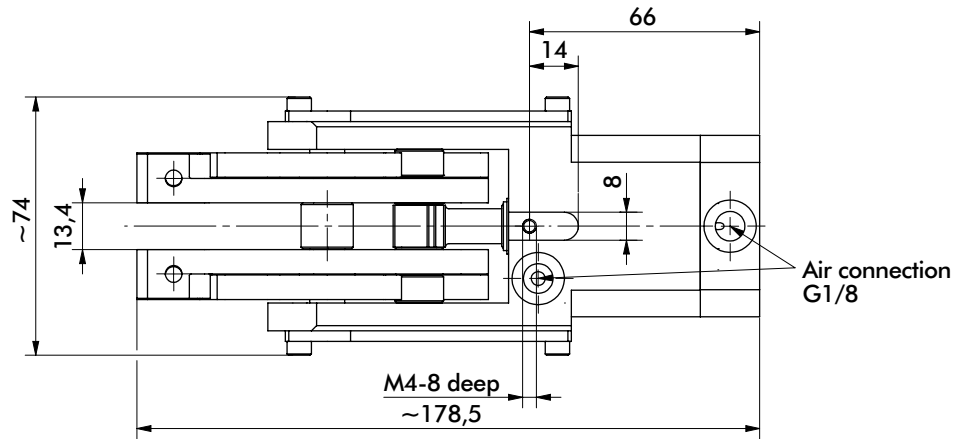
Description

- 0** None
- A** Rear Flange - 8MA-006-1
- 3** Rear Flange - 8MA-273-1
- S** Rear Swivel Ball - 82ZB-007-1
- X** On-Body Swivel Ball - 82ZB-033-2



84A3.33 SERIES (DOUBLE SYMMETRICAL JAW)

Cam Type Sheet Metal Grippers | Dimensions and Technical Specifications



Addition of gripper teeth height and thickness of the clamped plate must be 24,8 mm. It might be necessary to use shim plates or to grind off the gripper teeth.

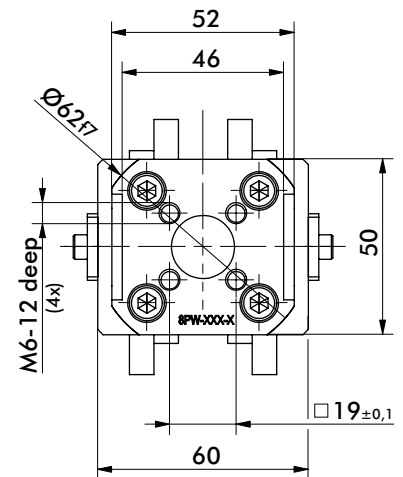
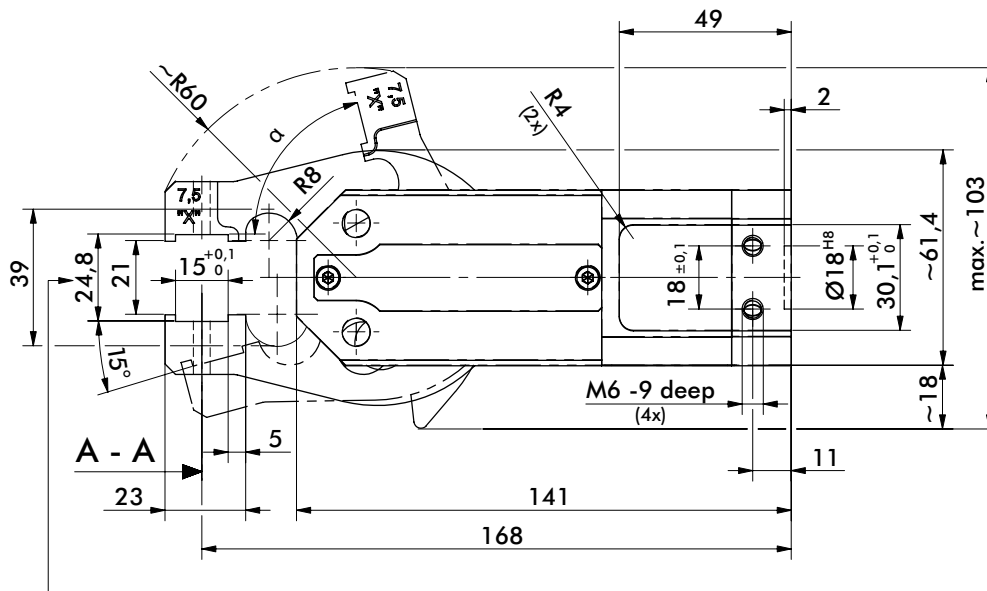
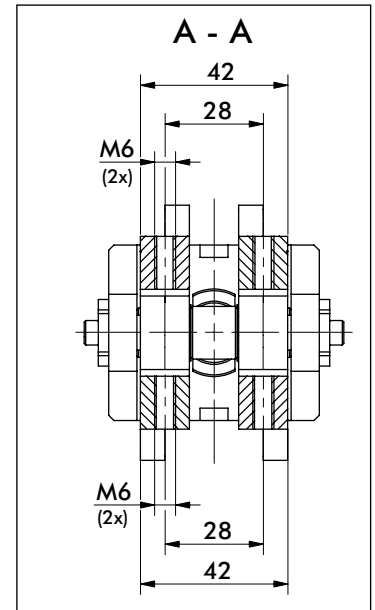
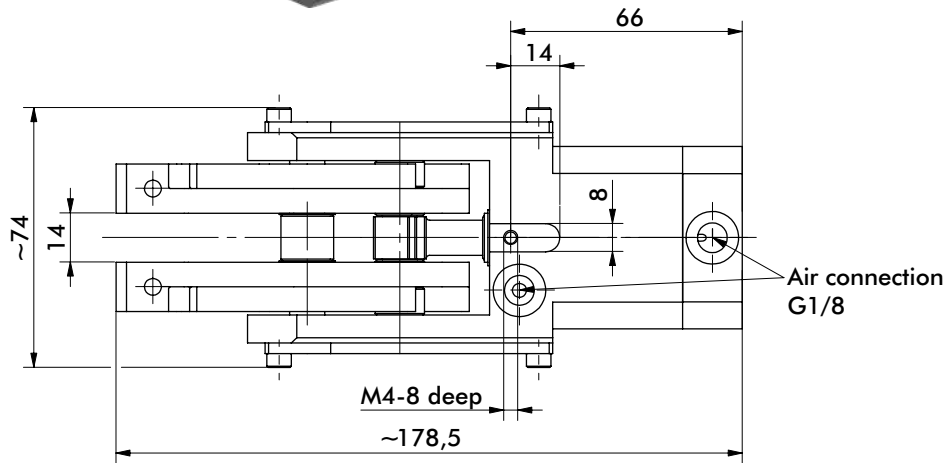
Medium air, max. 6 bar. Operation with oil-free air is permissible.

NOTE! Any extension of the moveable or fixed gripper jaws as well as the additional attachment of weights will void warrantee.

Model 84A3.33	Opening Angle α Symmetrical	Clamping force at 5 bar ~N [lbs]	Weight Kg [lbs]
-	76°	750 [169]	1,48 [3.26]
X	30°		
Y	45°		
Z	60°		

84A3.33 SERIES (DOUBLE 15° LOWER JAW)

Cam Type Sheet Metal Grippers | Dimensions and Technical Specifications



Addition of gripper teeth height and thickness of the clamped plate must be 24,8 mm. It might be necessary to use shim plates or to grind off the gripper teeth.

Medium air, max. 6 bar. Operation with oil-free air is permissible.

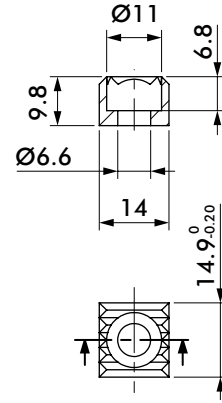
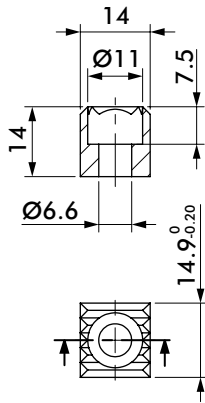
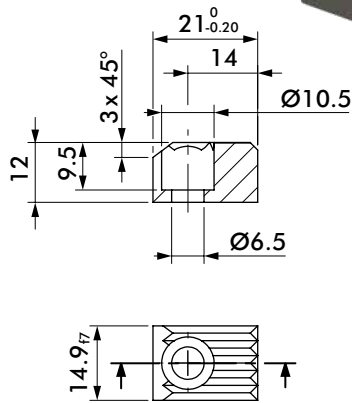
NOTE! Any extension of the moveable or fixed gripper jaws as well as the additional attachment of weights will void warrantee.

Model 84A3.33	Opening Angle α Upper/Lower	Clamping force at 5 bar ~N [lbs]	Weight Kg [lbs]
R	76°/15°	750 [169]	1,35 [2.98]
S	30°/15°		
T	45°/15°		
U	60°/15°		

84A3 SERIES ACCESSORIES

Cam Type Sheet Metal Grippers | Dimensions and Ordering Information

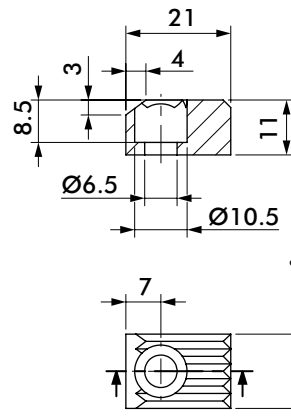
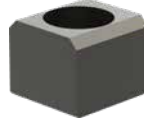
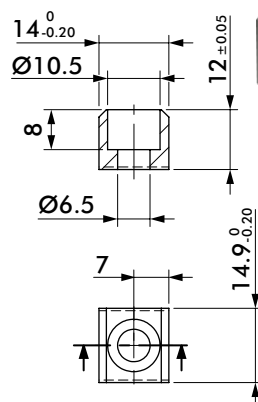
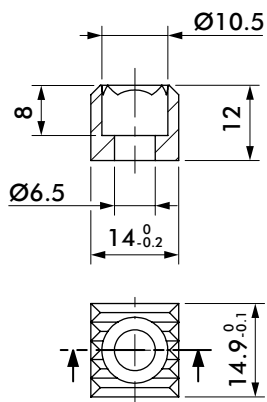
Steel Teeth



Steel Teeth Part Number
Serrated **8JZ-014-3**

Steel Teeth Part Number
Serrated **8JZ-001-1**

Steel Teeth Part Number
Serrated **8JZ-003-1**

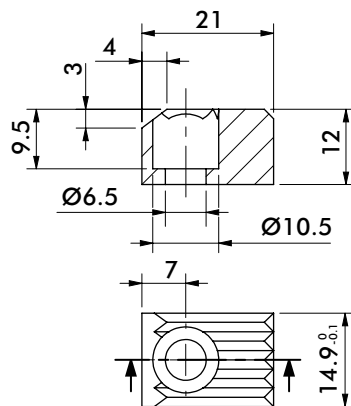


Steel Teeth Part Number
Serrated **8JZ-043-1**

Steel Teeth Part Number
Flat **8JZ-050-1**

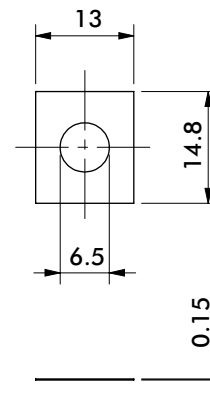
Steel Teeth Part Number
Serrated **8JZ-066-1**

High Temperature Steel Teeth



Steel Teeth Part Number
High Temperature, Serrated **8JZ-094-1**

Shims

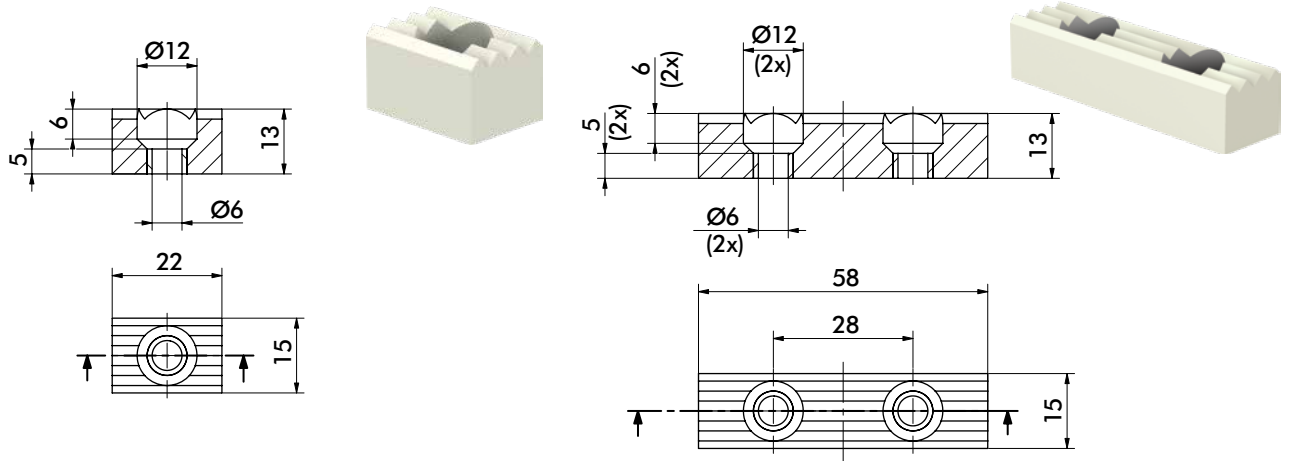


Shims Part Number
Shims for Gripper Teeth **8SB-003-1**

84A3 SERIES ACCESSORIES

Cam Type Sheet Metal Grippers | Dimensions and Ordering Information

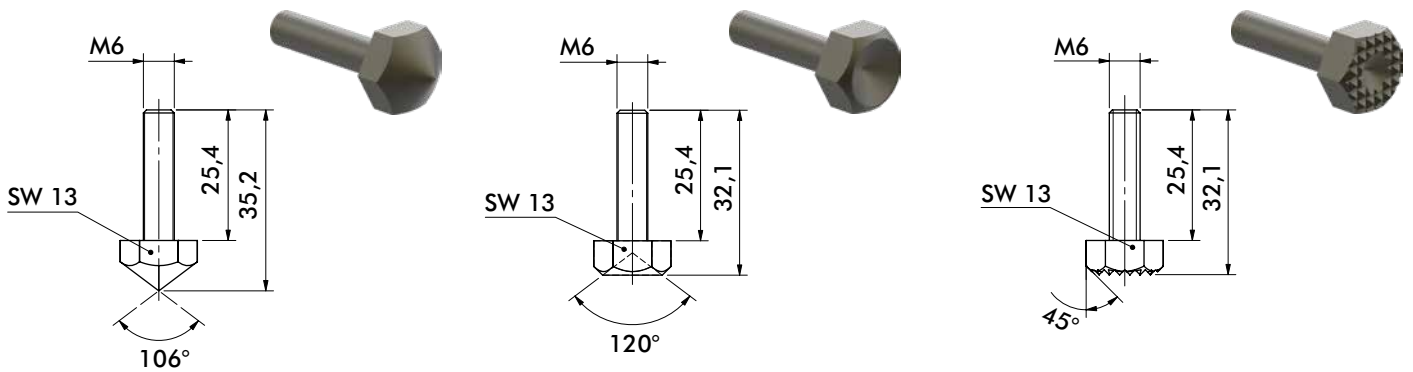
Plastic Teeth



Plastic Teeth Part Number
90 Shore, Serrated **8JZ-021-1**

Plastic Teeth Part Number
90 Shore, Serrated (Upper) **8JZ-023-1**

Steel Points

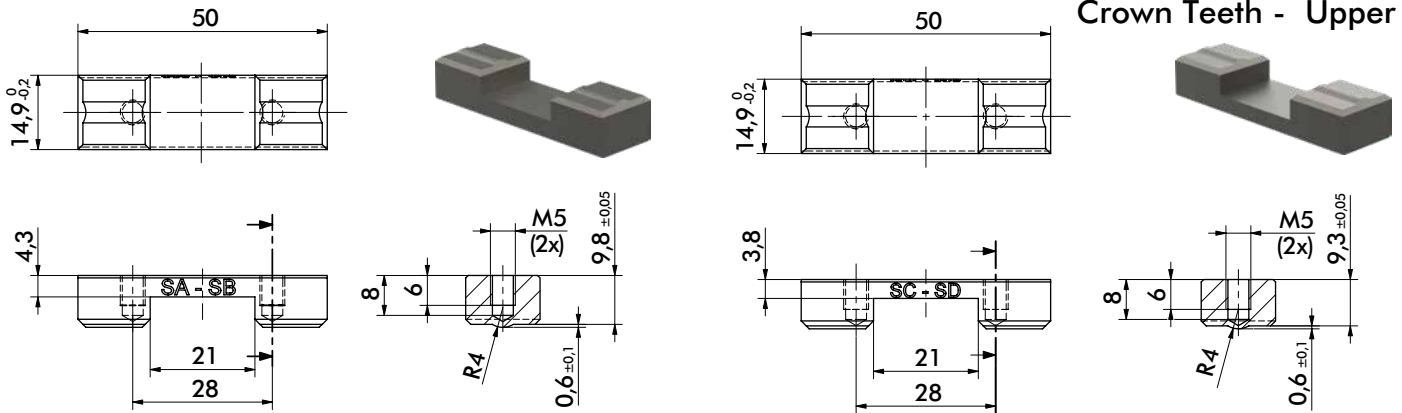


Steel Point Part Number
Pointed **8MJ-1001-1**

Steel Point Part Number
Flat **8MJ-1002-1**

Steel Point Part Number
Serrated **8MJ-1003-1**

Crown Teeth - Upper



For material thickness 0,5 - 1,0 mm

For material thickness 1,0 - 1,5 mm

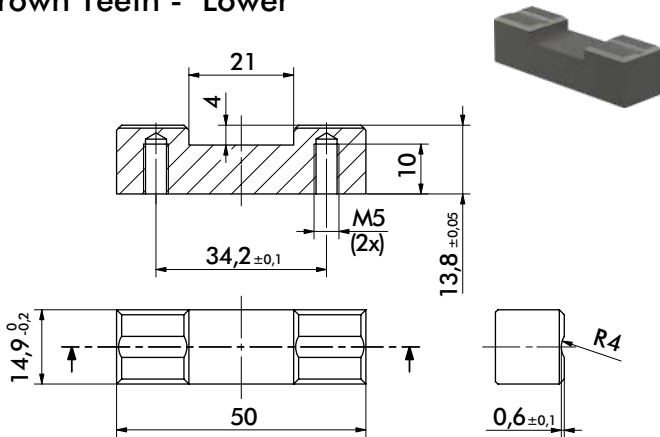
Crown Teeth Part Number
Convex **8JZ-016-2**

Crown Teeth Part Number
Convex **8JZ-018-2**

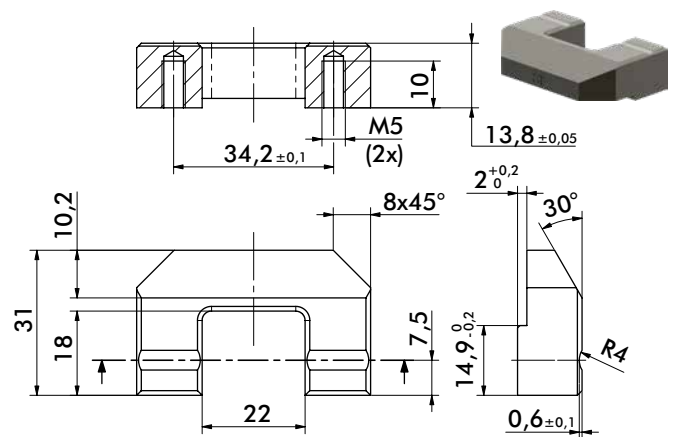
84A3 SERIES ACCESSORIES

Cam Type Sheet Metal Grippers | Dimensions and Ordering Information

Crown Teeth - Lower

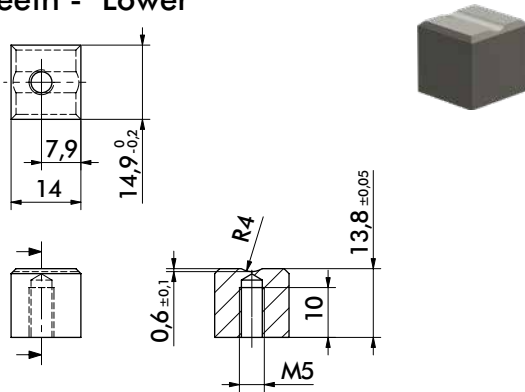


Crown Teeth Part Number **8JZ-019-1**
Concave



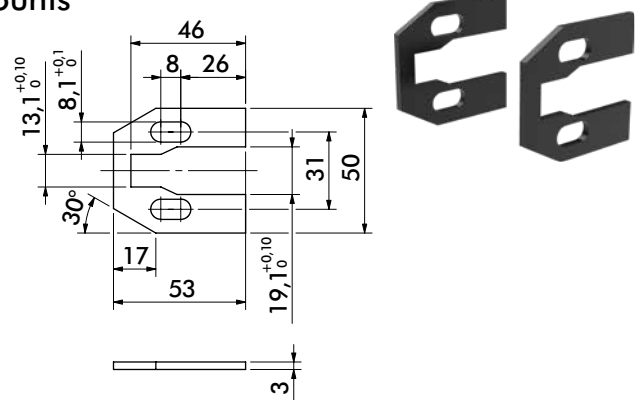
Crown Teeth Part Number **8JZ-020-3**
Concave

Crown Teeth - Lower



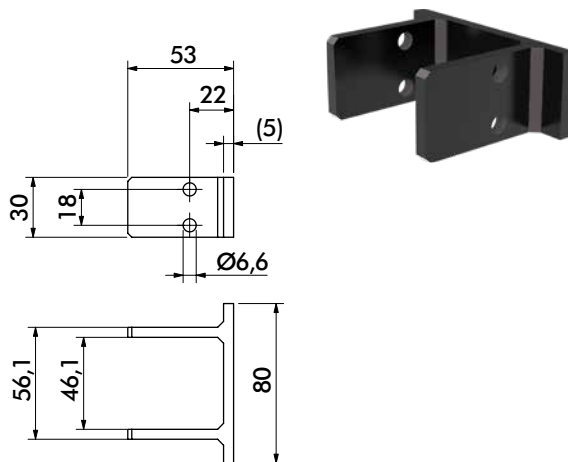
Crown Teeth Part Number **8JZ-048-1**
Concave

Mounts

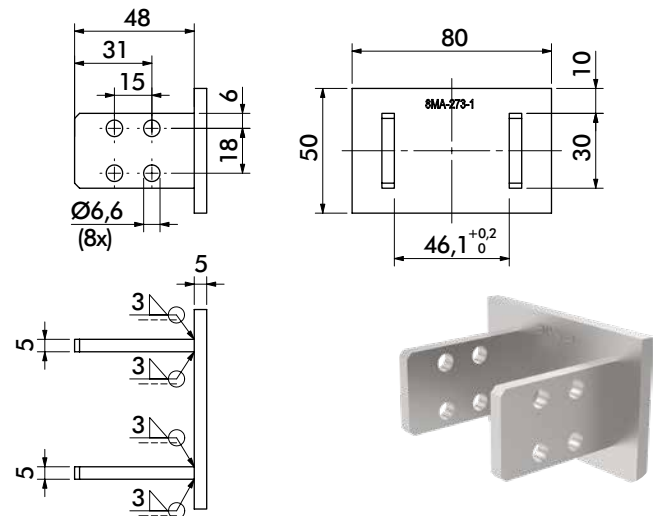


Mount Part Number **8MH-046-1**
Guards

Mounts



Mount Part Number **8MA-006-1**
Rear Flange

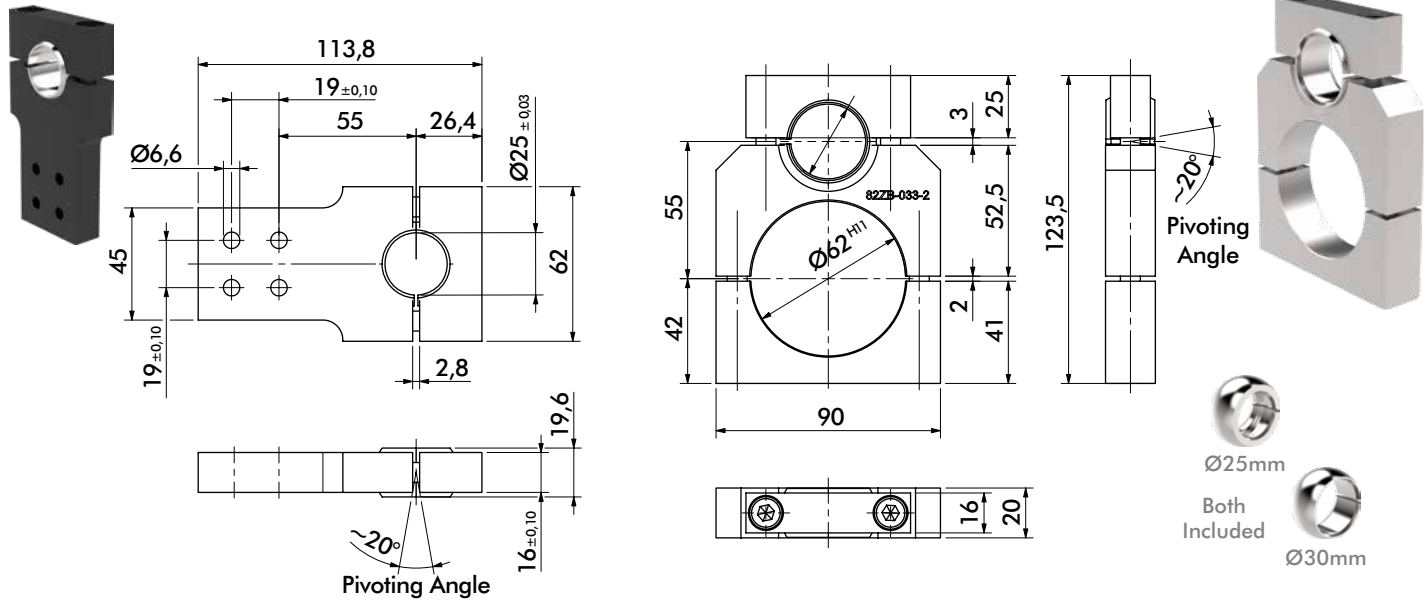


Mount Part Number **8MA-273-1**
Rear Flange

84A3 SERIES ACCESSORIES

Cam Type Sheet Metal Grippers | Dimensions and Ordering Information

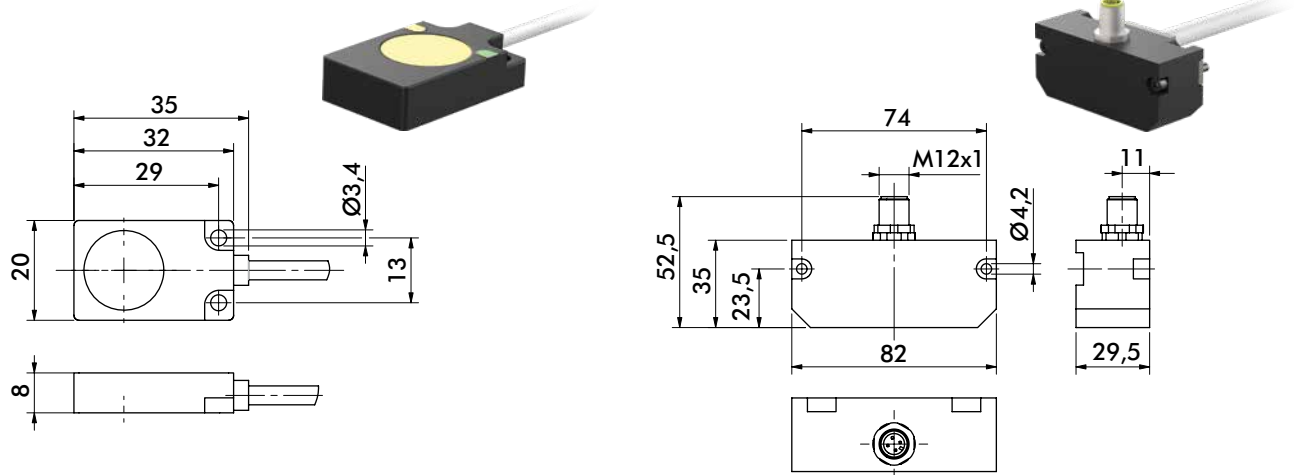
Mounts



Mount	Part Number
Rear Swivel Ball	82ZB-007-1

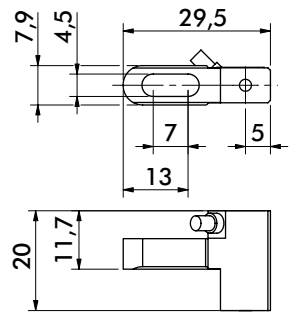
Mount	Part Number
On-Body Swivel Ball	82ZB-033-2

Sensors



Workpiece Control Sensor	Part Number
7mm Sensing Distance, 2m Cable	8EA-092-1

Position Control Set Sensor	Part Number
For 76° Opening Angle Only	8EA-022-4



Double Sheet Control Sensor	Part Number
1.5mm Sensing Distance	8EA-087-1