



.....
TOGGLE PRESSES
MANUAL, PNEUMATIC & RACK
AND PINION



TOGGLE HAND PRESSES

TOGGLE HAND PRESS

MODEL P600PR



DATA

With 14 daN handle force the output force is:	
Fully retracted	470 daN
5 mm extended	110
10 mm "	70
15 mm "	75
20 mm "	80
25 mm "	85
30 mm "	146
31 mm "	190
Fully extended	580

Type:
Bench mounted manual toggle press.

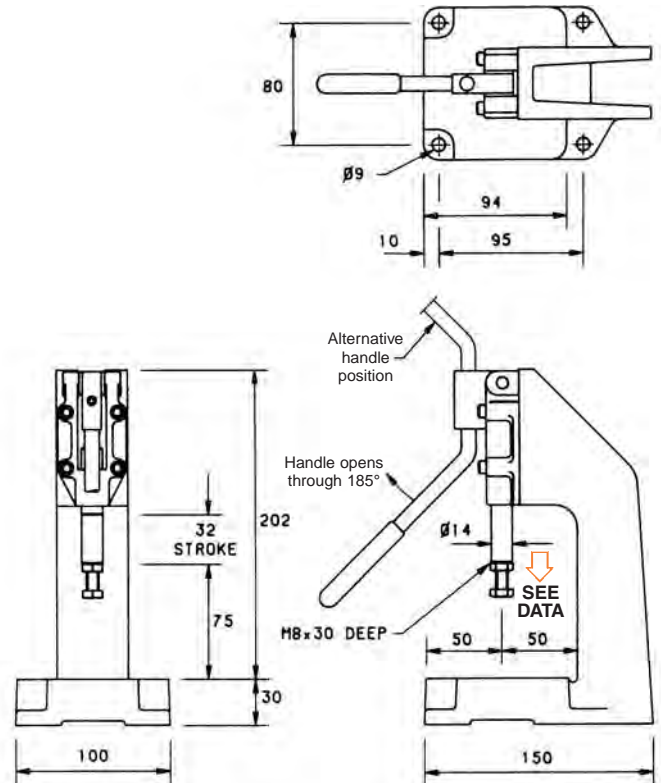
Nominal holding force:
600 daN.

Weight:
3.60 kg.

Quality Features:

- S.G. Iron framecasting.
- precision ground steel plunger.
- fixed height work head.

All toggle presses achieve their maximum force at the end of the stroke. Therefore Brauer toggle presses are best employed where the full force of the press is only used over a short length at the end of the working stroke; e.g. when punching, riveting, embossing, gluing, etc.



TOGGLE HAND PRESS

MODEL P1200PR



DATA

With 15 daN handle force the output force is:	
Fully retracted	705 daN
5 mm extended	167
10 mm "	90
15 mm "	73
20 mm "	70
25 mm "	72
30 mm "	85
35 mm "	100
40 mm "	110
45 mm "	150
48 mm "	220
49 mm "	290
Fully extended	930

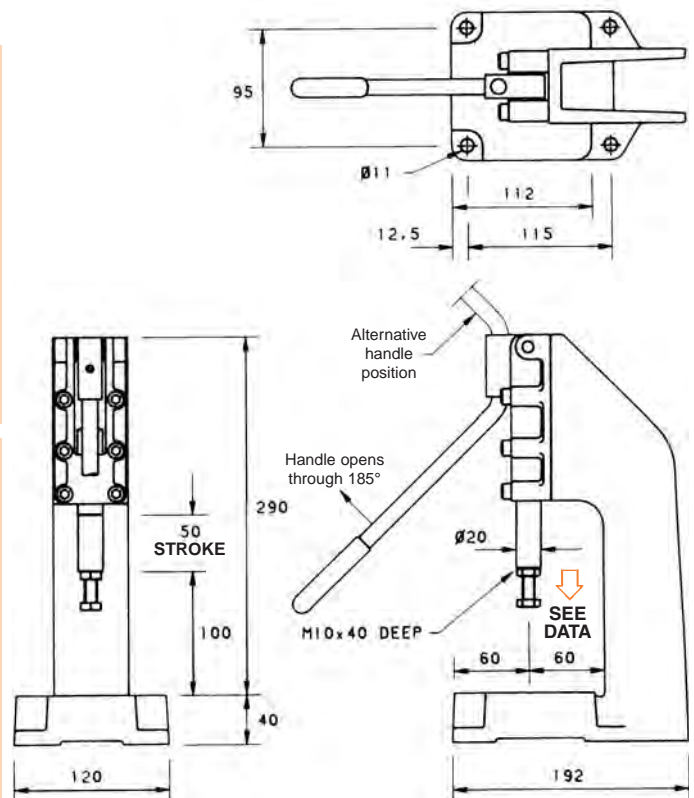
Type:
Bench mounted manual toggle press.

Nominal holding force:
1200 daN.

Weight:
7.35 kg.

Quality Features:

- S.G. Iron framecasting.
- precision ground steel plunger.
- fixed height work head.



BRAUER®

TOGGLE HAND PRESSES

TOGGLE HAND PRESSES

MODEL P2500PR



DATA

With 17 daN handle force the output force is:

daN	mm
1000	Fully retracted
100	10 mm extended
72	20 mm "
60	30 mm "
70	40 mm "
88	50 mm "
118	60 mm "
190	70 mm "
230	72 mm "
353	74 mm "
1100	Fully extended

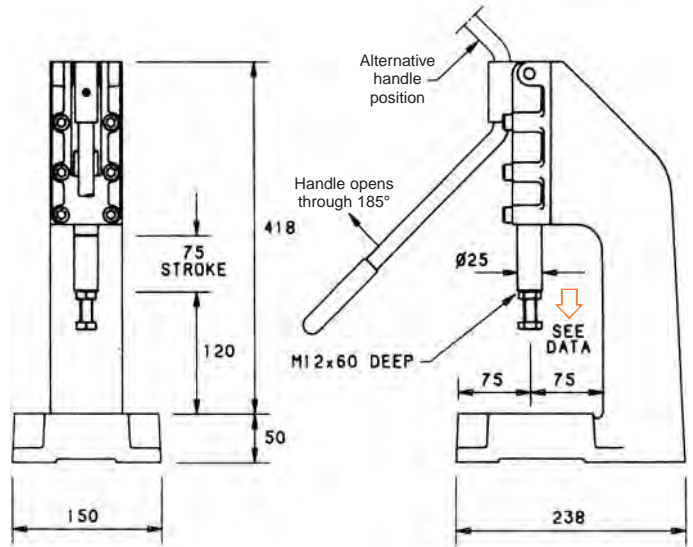
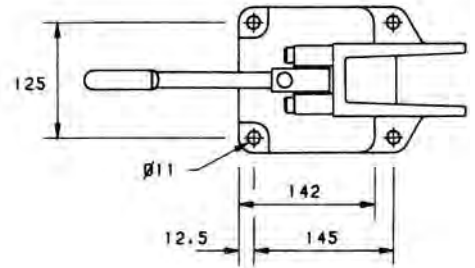
Type:
Bench mounted manual toggle press.

Nominal holding force:
2500 daN.

Weight:
15.50 kg.

Quality Features:

- S.G. Iron framecasting.
- precision ground steel plunger.
- fixed height work head.



TOGGLE HAND PRESSES

MODEL TPR 1



DATA

With 13 daN handle force the output force is:

daN	mm
48	Fully retracted
45	5 mm extended
42	10 mm "
42	15 mm "
45	20 mm "
49	25 mm "
54	30 mm "
75	35 mm "
102	38 mm "
143	39 mm "
500	Fully extended

Optional Extras: please mention when ordering
Table Bore 12^{H7} mm TB
Stroke Counter Z

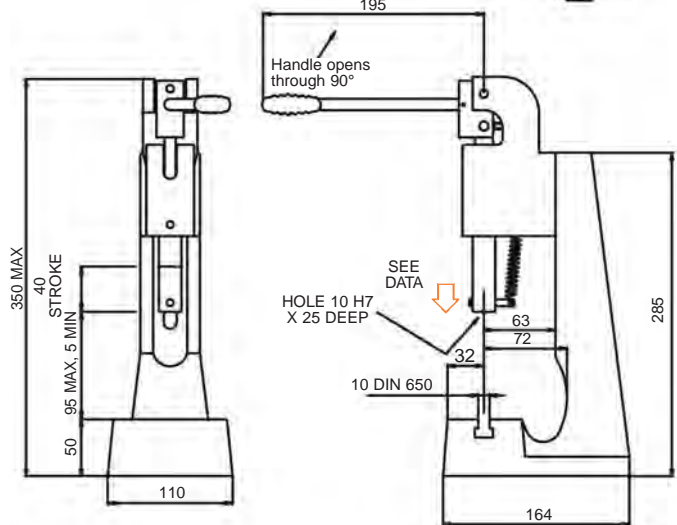
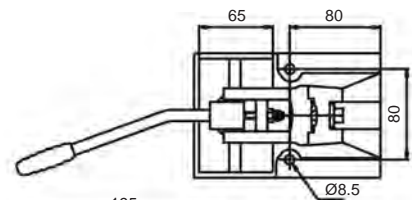
Type:
Bench mounted toggle press

Nominal holding force:
500 daN

Weight:
10 kg

Quality Features:

- hardened, ground ram.
- long-design, honed ram.
- ground table, with T-slot.
- adjustable working head height.



CLAMPING PRODUCTS



TOGGLE HAND PRESSES

TOGGLE HAND PRESSES

MODEL TPR 2



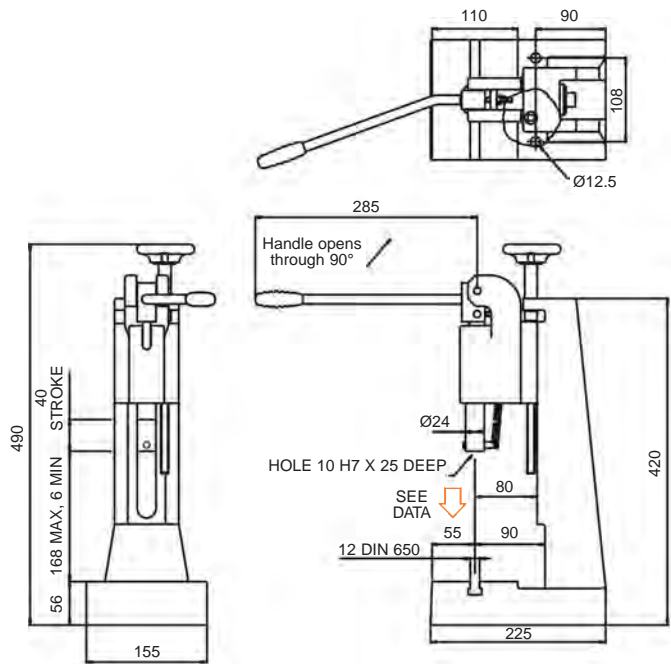
DATA

With 15 daN handle force the output force is:	daN
Fully retracted	76
5 mm extended	74
10 mm "	65
15 mm "	65
20 mm "	72
25 mm "	80
30 mm "	98
35 mm "	125
38 mm "	200
39 mm "	255
Fully extended	750

Optional Extras: please mention when ordering
 Table Bore 12^{H7}mm TB
 Stroke Counter Z

Type: Bench mounted toggle press
Nominal holding force: 750 daN
Weight: 19 kg
Quality Features:

- hardened, ground ram.
- long-design, honed ram.
- ground table, with T-slot.
- adjustable working head height.



TOGGLE HAND PRESSES

MODEL TPR 3



DATA

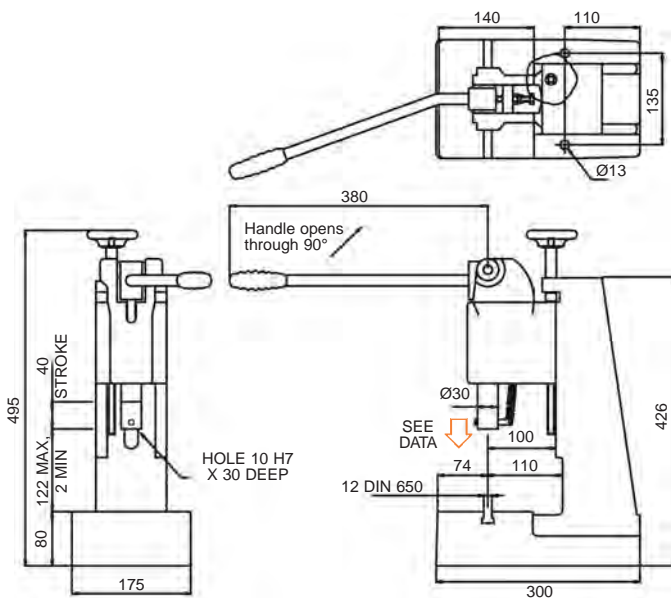
With 20 daN handle force the output force is:	daN
Fully retracted	145
5 mm extended	135
10 mm "	130
15 mm "	130
20 mm "	130
25 mm "	140
30 mm "	160
35 mm "	230
38 mm "	325
39 mm "	440
Fully extended	1400

Optional Extras: please mention when ordering
 Table Bore 12^{H7} mm TB
 Stroke Counter Z

Type: Bench mounted toggle press
Nominal holding force: 1400 daN
Weight: 39 kg
Quality Features:

- hardened, ground ram.
- long-design, honed ram.
- ground table, with T-slot.
- adjustable working head height.

The **extra powerful** hand toggle presses in the TPR 3 series are especially suited to the often changing demands found in tool making and general workshops. Their high capacity up to 15 kN allow for flexible use in various applications.



CLAMPING PRODUCTS



RACK & PINION HAND PRESSES

RACK & PINION PRESSES

MODEL RPP 1



DATA

With 18 daN handle force the output force is 150 daN

Capacity	kN	1,5
	kgf	150
Working Stroke	mm	43
Clearance	mm	63
Table Size	mm	100x65
T-Slot width to DIN 650	mm	10
Ram Bore Øx depth	mm	10 ^{H7} x25
Ram Ø	mm	20
Space required	mm	110x160
Weight	kg	8,5

Optional Extras: please mention when ordering

Table Bore 12 ^{H7}	mm	TB
Micrometer Screw Gauge		MICRO
Stroke Counter		Z

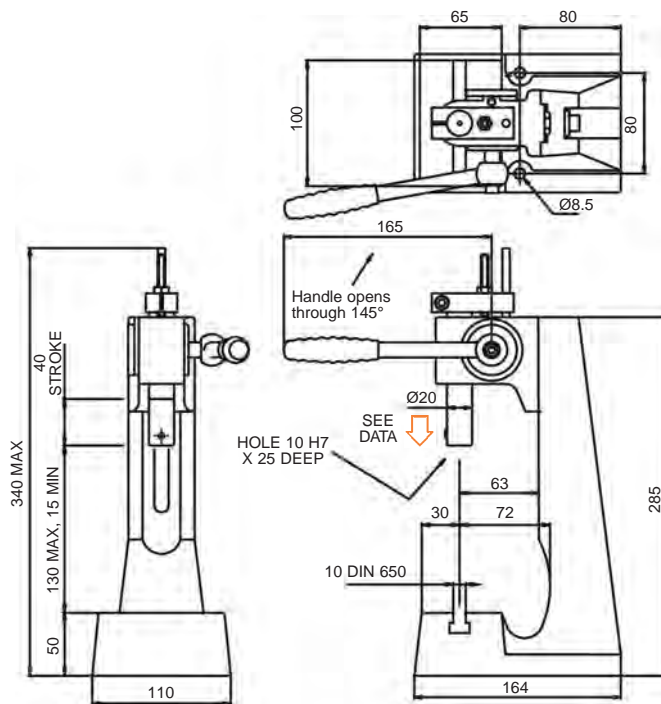
Type:

Bench mounted rack and pinion press

Quality Features:

- anti-twist ram.
- stroke adjustment by means of adjustment screw, or micrometer screw.
- hand lever adjustable through 360°.
- long, honed ram guide.
- ground table, with T-slot.

All Brauer rack and pinion presses apply their pressing force constantly throughout the entire working stroke. The direct transmission of force through the lever allows the operator to sense the load being applied. The optional micrometer stop for stroke adjustment allows high precision work.



RACK & PINION PRESSES

MODEL RPP 2



DATA

With 20 daN handle force the output force is 150 daN

Capacity	kN	2,5
	kgf	250
Working Stroke	mm	50
Clearance	mm	80
Table Size	mm	155x115
T-Slot width to DIN 650	mm	12
Ram Bore Øx depth	mm	10 ^{H7} x25
Ram Ø	mm	20
Space required	mm	155x220
Weight	kg	21

Optional Extras: please mention when ordering

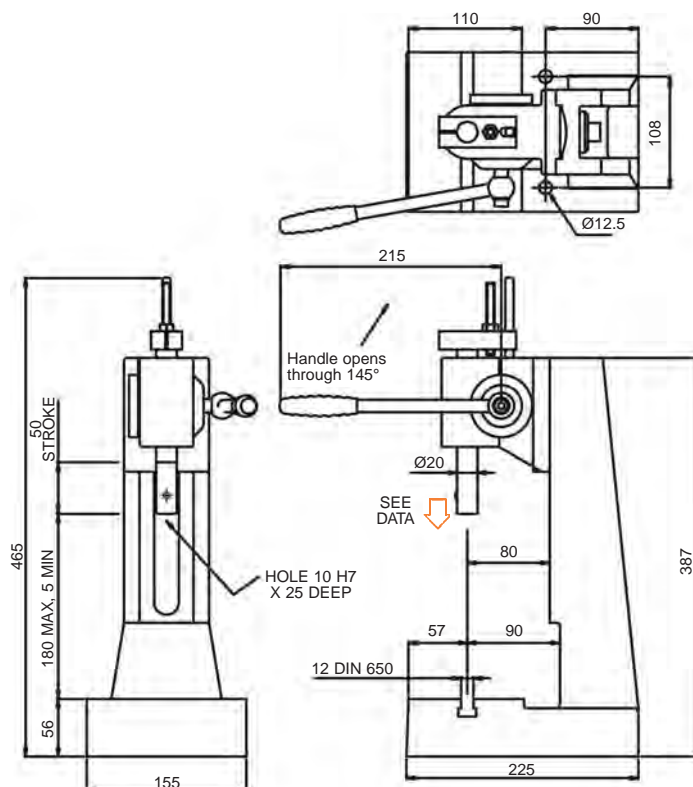
Table Bore 12 ^{H7}	mm	TB
Micrometer Screw Gauge		MICRO
Stroke Counter		Z

Type:

Bench mounted rack and pinion press

Quality Features:

- anti-twist ram.
- stroke adjustment by means of adjustment screw, or micrometer screw.
- hand lever adjustable through 360°.
- long, honed ram guide.
- ground table, with T-slot.





TOGGLE HAND PRESSES

PNEUMATIC TOGGLE PRESS

MODEL P600XPR



DATA

With 6 bar air supply pressure the output force is:		daN
Fully retracted		20
5 mm extended		32
10 mm	"	43
15 mm	"	65
20 mm	"	87
22 mm	"	100
24 mm	"	150
Fully extended		253

Type:
Bench mounted pneumatic toggle press.

Nominal holding force:
600 daN.

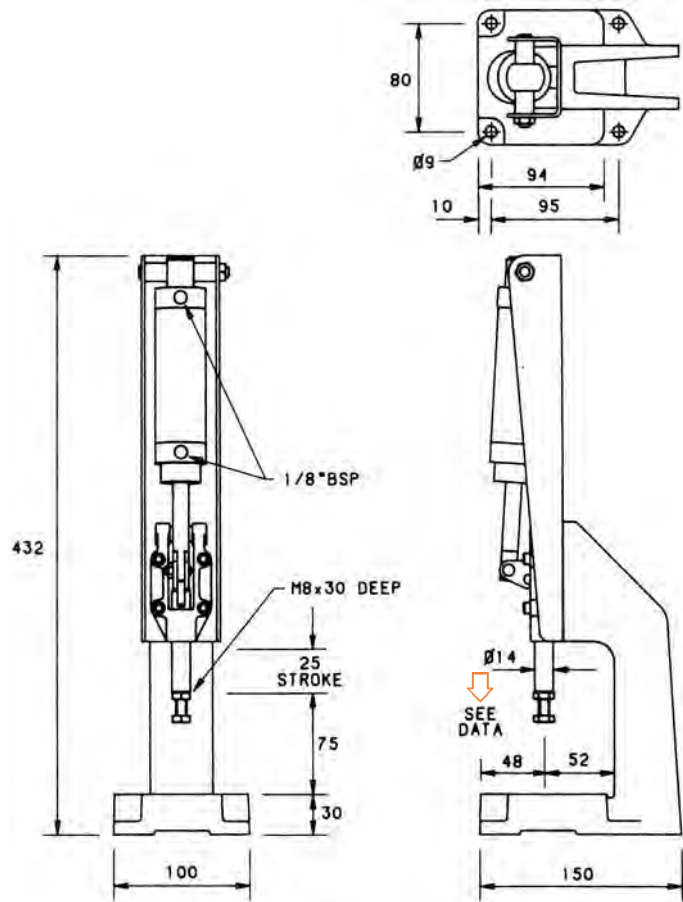
Operating pressure range:
2-6 bar (30-88p.s.i.g.)

Max. cycles/min. @ 6 bar:
60

Swept volume per cycle:
0.09 L³ (5.49 cu. in)

For stroke sensing order SK/3 Sensing Kit

Weight:
5.25 kg.



PNEUMATIC TOGGLE PRESS

MODEL P1200XPR



DATA

With 6 bar air supply pressure the output force is:		daN
Fully retracted		110
5 mm extended		120
10 mm	"	140
15 mm	"	165
20 mm	"	195
25 mm	"	230
27 mm	"	255
29 mm	"	300
31 mm	"	430
Fully extended		1150

Type:
Bench mounted pneumatic toggle press.

Nominal holding force:
1200 daN.

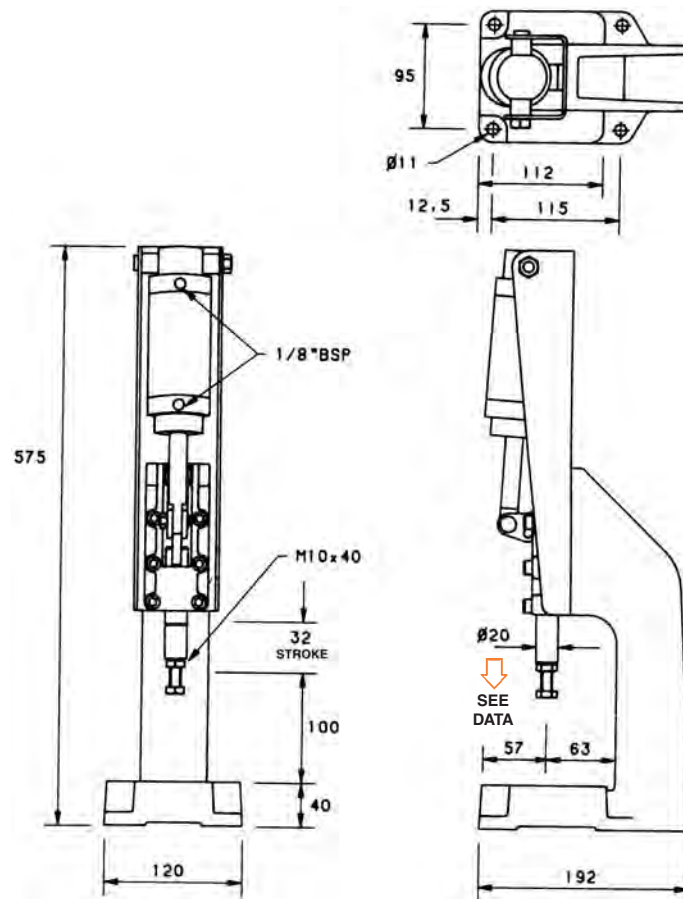
Operating pressure range:
2-6 bar (30-88p.s.i.g.)

Max. cycles/min. @ 6 bar:
50

Swept volume per cycle:
0.28 L³ (16.80 cu. in)

For stroke sensing order SK/4 Sensing Kit

Weight:
9.85 kg.



CLAMPING PRODUCTS

BRAUER®

PNEUMATIC PRESSES

PNEUMATIC TOGGLE PRESS

MODEL P2500XPR



With 6 bar air supply pressure the output force is:

Fully retracted	130 daN
5 mm extended	140
10 mm "	160
15 mm "	175
20 mm "	200
25 mm "	210
30 mm "	245
35 mm "	265
40 mm "	325
45 mm "	420
47 mm "	490
49 mm "	700
Fully extended	1450

Type:
Bench mounted pneumatic toggle press.

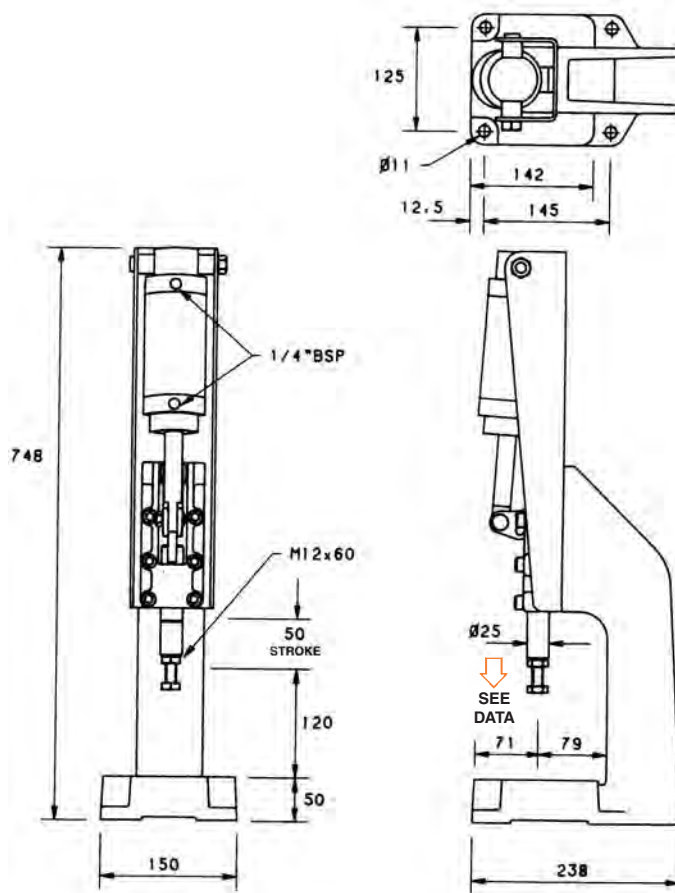
Nominal holding force:
2500 daN.

Operating pressure range:
2-6 bar (30-88p.s.i.g.)

Max. cycles/min. @ 6 bar:
45

Swept volume per cycle:
0.6 L³ (36.6 cu. in)
For stroke sensing order SK/5 Sensing Kit

Weight:
19.05 kg.



DIRECT ACTING PNEUMATIC PRESS

MODEL PNDP 1

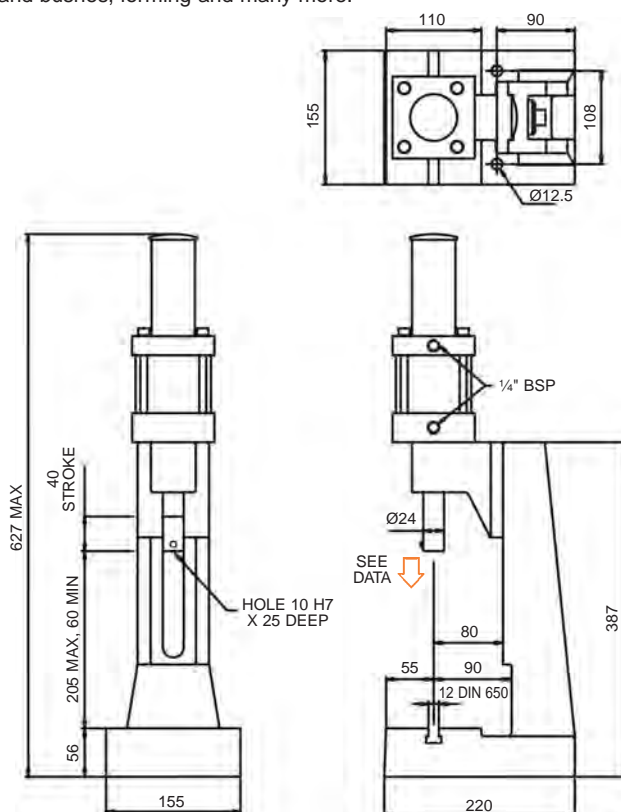


Capacity at 6 bar	kN	2,5
	kgf	250
Working Stroke	mm	40
Clearance	mm	80
Table Size	mm	208x48
T-Slot width to		
DIN 650	mm	12
Ram Bore		
Øxdepth	mm	12 ^{H7} x25
Ram Ø	mm	24
Space required	mm	155x220
Port Size		R 1/4"
Air Consumption/cm		
Stroke	l	0,6
Weight	kg	18,5

Quality Features:

- anti-twist ram.
- stroke adjustable through a length of 30 mm to an accuracy of 0,05 mm.
- long, honed ram guide.
- ground table, with T-slot.

All Brauer direct acting pneumatic presses apply their pressing force constantly throughout the entire working stroke. They offer a wide variety of uses e.g. pressing in and out of dowels, bearings, and bushes, forming and many more.



CLAMPING PRODUCTS



PNEUMATIC PRESSES

PNEUMATIC TOGGLE PRESS

MODEL PNPR 1



With 6 bar air supply pressure the output force is:	daN
Fully retracted	110
5 mm extended	120
10 mm "	130
15 mm "	140
20 mm "	155
25 mm "	170
30 mm "	220
33 mm "	290
34 mm "	360
Fully extended	600
Air Consumption/cm	
Stroke l	0,26
Weight kg	22

Quality Features:

- the working height of the press head is easily set by means of the height mechanism on all pneumatic toggle action presses.
- hardened, ground ram.
- ground table, with T-slot.

All Brauer pneumatic toggle presses are employed where the full force of the press is only needed at the end of the stroke. The toggle action results in high force with a low air and therefore energy consumption of the double acting cylinder.

