

Disc Handwheels

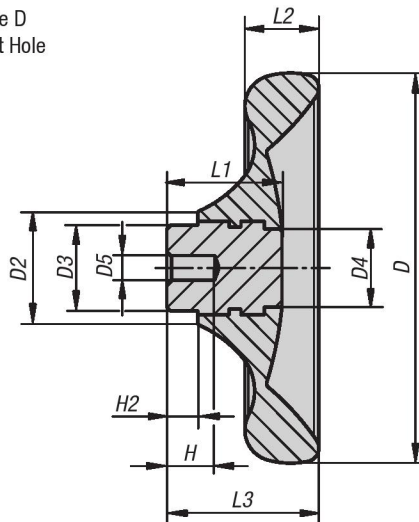
duroplastic without taper grip

INCH
Parts

METRIC
Parts



Style D
Pilot Hole



Material:

Black Duroplast PF 31.

Hub nickel-plated steel or stainless steel 1.4305 natural finish.

Type:

High-polish finish.

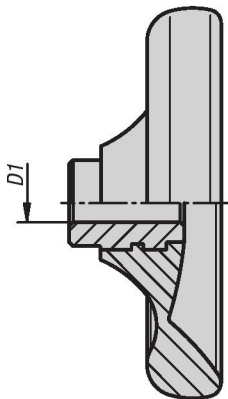
Part Number Example:

K0165.1100XCM

On request:

Other reamed holes.

Style E
Thru Bore Hole





Disc Handwheels

duroplastic without taper grip

KIPP Disc Handwheels without taper grip, bushing in steel, inch

Item No.	Style	Size	D	D1	D2	D3	D4	H2	L1	L2	L3
K0165.1100XCM	E	1	100	.25	29	22	20	8	29.5	19	39
K0165.1125XCO	E	2	125	.375	34	26	21	8	34	24	46
K0165.1140XCP	E	3	140	.5	39	30	25	8	38.5	27	52
K0165.1160XCQ	E	4	160	.625	43	33	30	8	41.3	30.1	57
K0165.1160XCR	E	4	160	.75	43	33	30	8	41.3	30.1	57

KIPP Disc Handwheels without taper grip, bushing in stainless steel, inch

Item No.	Style	Size	D	D1	D2	D3	D4	H2	L1	L2	L3
K0165.3100XCM	E	1	100	.25	29	22	20	8	29.5	19	39
K0165.3125XCO	E	2	125	.375	34	26	21	8	34	24	46
K0165.3140XCP	E	3	140	.5	39	30	25	8	38.5	27	52
K0165.3160XCQ	E	4	160	.625	43	33	30	8	41.3	30.1	57
K0165.3160XCR	E	4	160	.75	43	33	30	8	41.3	30.1	57

KIPP Disc Handwheels without taper grip, bushing in steel, metric

Item No. Style D	Item No. Style E	Size	D	D1	D2	D3	D4	D5	H	H2	L1	L2	L3
K0165.0100X06	K0165.1100X10	1	100	-/10 H8	29	22	20	6/ -	12/ -	8	29,5	19	39
K0165.0125X08	K0165.1125X12	2	125	-/12 H8	34	26	21	8/ -	15/ -	8	34	24	46
K0165.0140X08	K0165.1140X14	3	140	-/14 H8	39	30	25	8/ -	16/ -	8	38,5	27	52
K0165.0160X10	K0165.1160X16	4	160	-/16 H8	43	33	30	10/ -	20/ -	8	41,3	30,1	57
-	K0165.1160X18	4	160	18 H8	43	33	30	-	-	8	41,3	30,1	57

KIPP Disc Handwheels without taper grip, bushing in stainless steel, metric

Item No. Style D	Item No. Style E	Size	D	D1	D2	D3	D4	D5	H	H2	L1	L2	L3
K0165.2100X06	K0165.3100X10	1	100	-/10 H7	29	22	20	6/ -	12/ -	8	29,5	19	39
K0165.2125X08	K0165.3125X12	2	125	-/12 H7	34	26	21	8/ -	15/ -	8	34	24	46
K0165.2140X08	K0165.3140X14	3	140	-/14 H7	39	30	25	8/ -	16/ -	8	38,5	27	52
K0165.2160X10	K0165.3160X16	4	160	-/16 H7	43	33	30	10/ -	20/ -	8	41,3	30,1	57
-	K0165.3160X18	4	160	18 H7	43	33	30	-	-	8	41,3	30,1	57