

82M-3E SERIES

Pneumatic Power Clamps | Ordering Information

82M-3

E

23

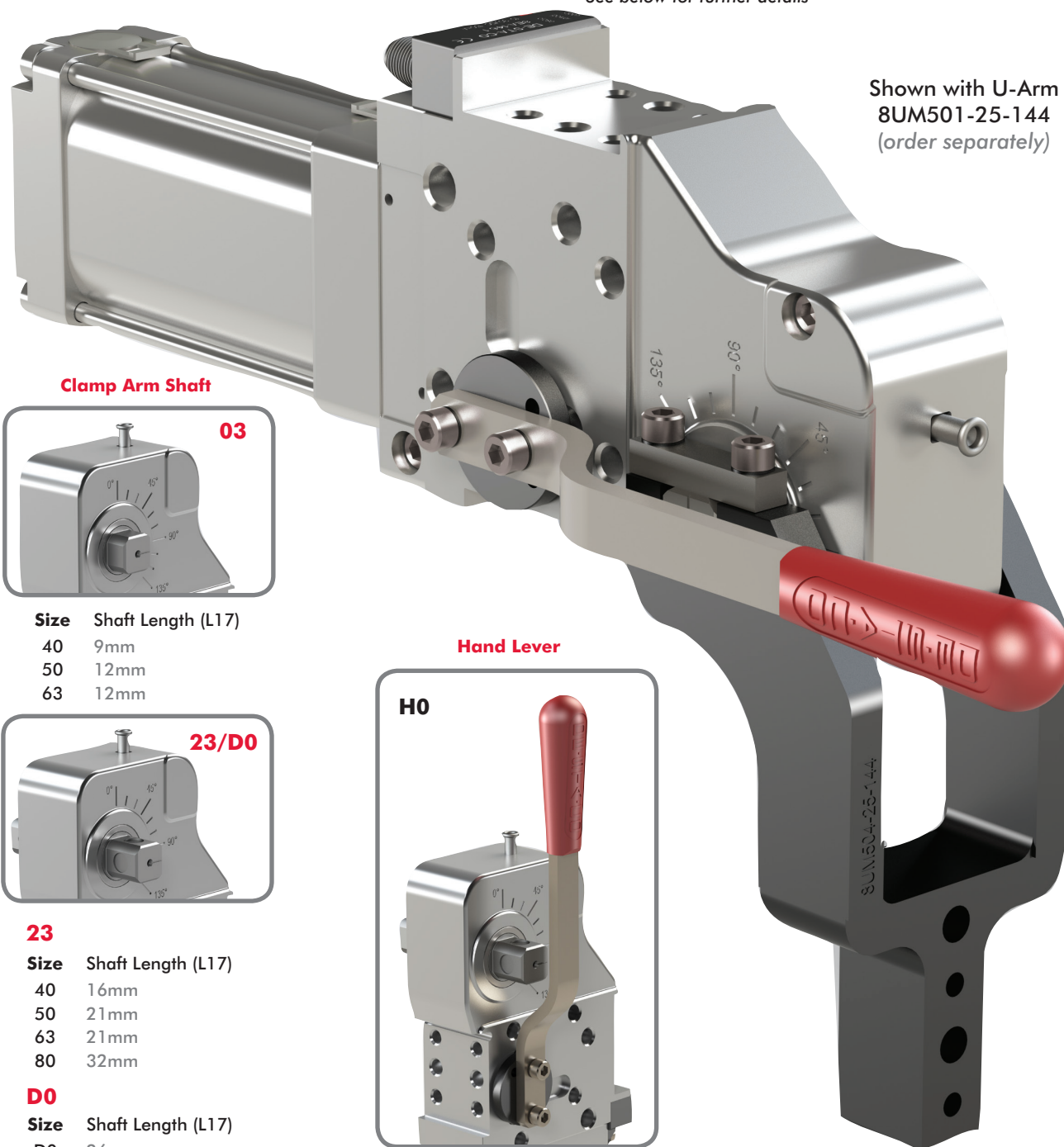
H0

50

L8

Base Model	Mounting	Description	Clamp Arm Shaft	Description	Handle	Description
	E	Standard	03	for U-Arms	00	No Hand lever
	N	NAAMS (Size 63 only)	23	for Lateral Arms	H0	Hand Lever
			D0	for Lateral Arms (size 63 only)		

See below for further details



Shown with U-Arm
8UM501-25-144
(order separately)

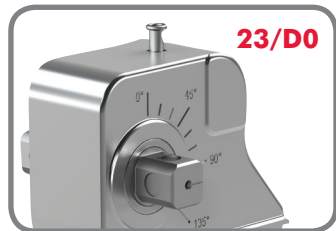
Clamp Arm Shaft



03

Size Shaft Length (L17)

40	9mm
50	12mm
63	12mm



23/D0

23

Size Shaft Length (L17)

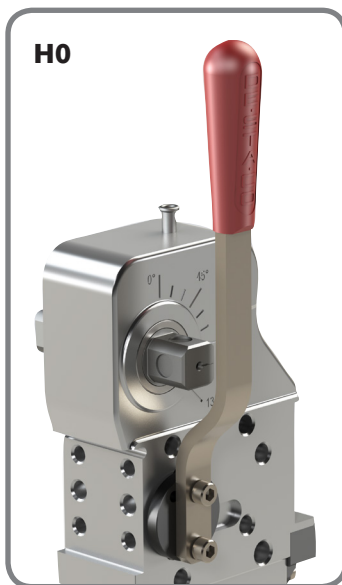
40	16mm
50	21mm
63	21mm
80	32mm

D0

Size Shaft Length (L17)

D0	26mm
----	------

Hand Lever



H0

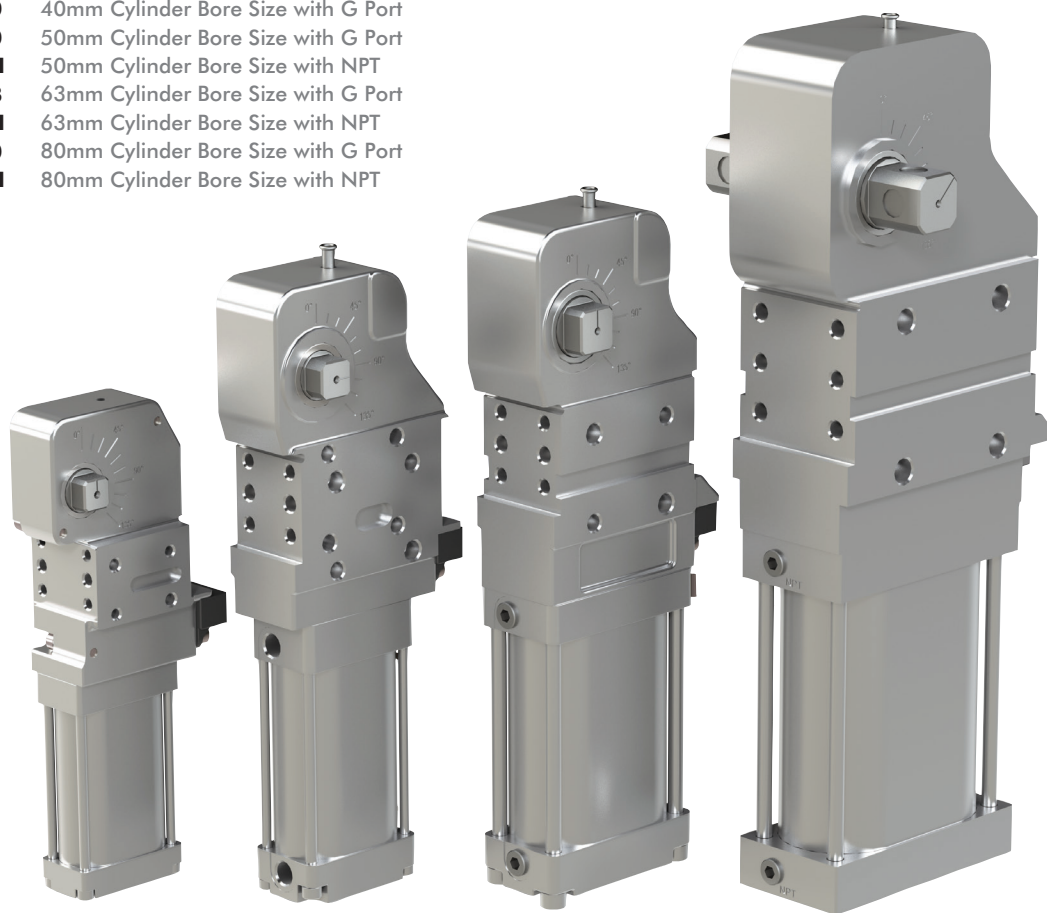
82M-3E SERIES

Pneumatic Power Clamps | Ordering Information

Sensor	Description
00	No sensor
L8	Sensor with In-line Connector (Replacement Order No.: 8EA-146-2)
L9	Sensor with 90 deg Connection (Replacement Order No.: 8EA-147-2)



Size	Description
40	40mm Cylinder Bore Size with G Port
50	50mm Cylinder Bore Size with G Port
5N	50mm Cylinder Bore Size with NPT
63	63mm Cylinder Bore Size with G Port
6N	63mm Cylinder Bore Size with NPT
80	80mm Cylinder Bore Size with G Port
8N	80mm Cylinder Bore Size with NPT



40

Max Holding Torque
380 Nm
Max Clamping Torque
120 Nm at 5bar

50

Max Holding Torque
1300 Nm
Max Clamping Torque
270 Nm at 5bar

63

Max Holding Torque
1800 Nm
Max Clamping Torque
420 Nm at 5bar

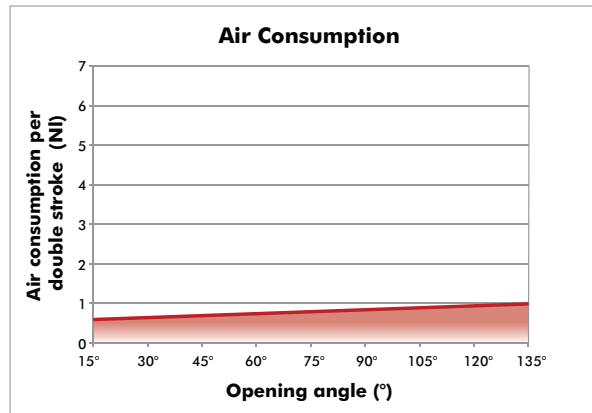
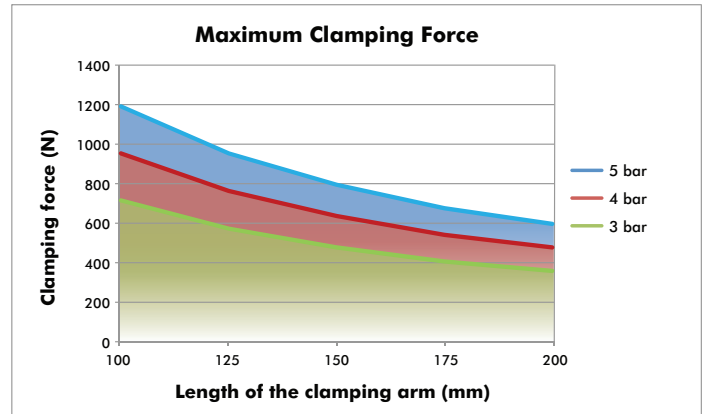
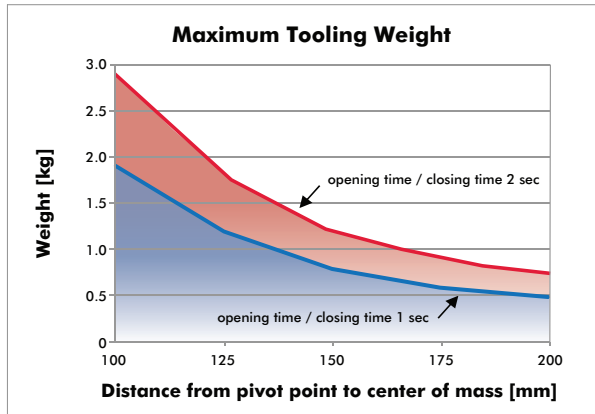
80

Max Holding Torque
3000 Nm
Max Clamping Torque
850 Nm at 5bar

82M-3E****40 SERIES

Pneumatic Power Clamps | Technical Specifications

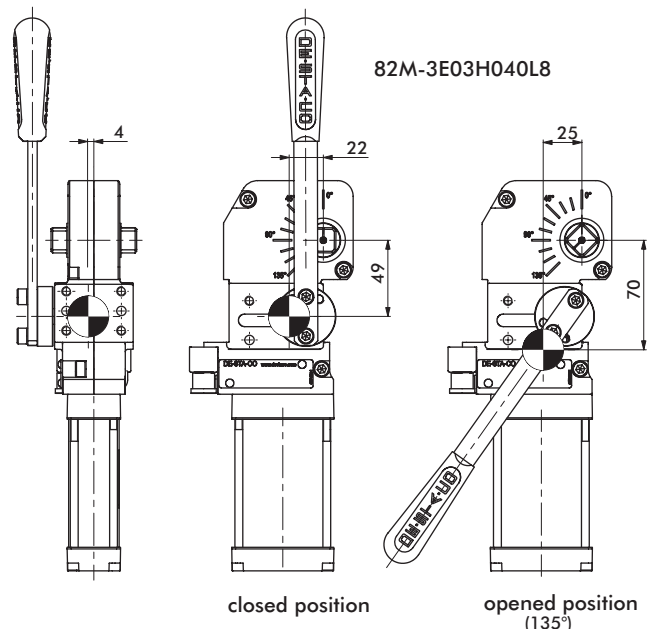
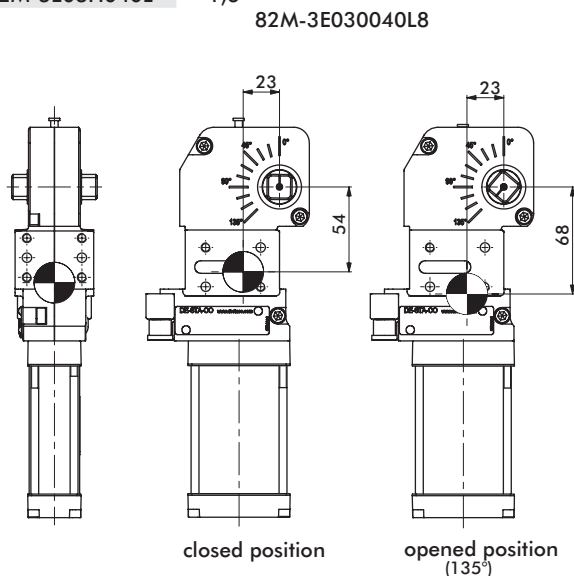
Model	Max. Holding Torque (Nm)	Clamping Torque at 5 bar (Nm)	Cylinder Ø (mm)	Weight (kg)	Air Consumption per double stroke at 5 bar (liter)
82M-3E****40**	380	120	40	1,5	0,9



ATTENTION:
Calculation tool available. Please consult factory.

Center of Mass

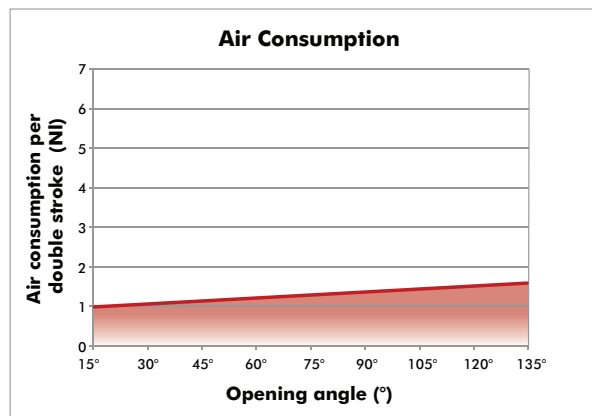
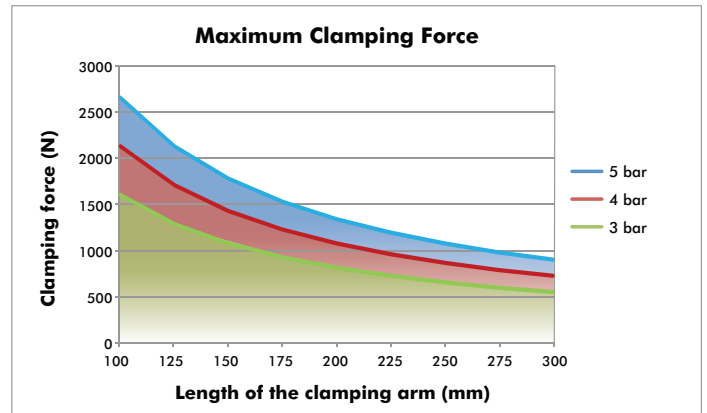
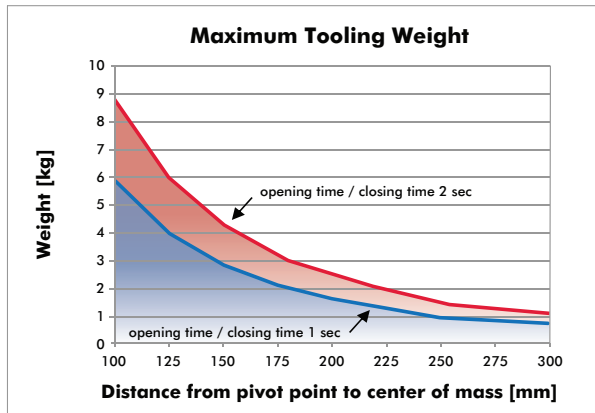
Model	Weight (kg)
82M-3E030040L*	1,5
82M-3E03H040L*	1,6



82M-3E****5* SERIES

Pneumatic Power Clamps | Technical Specifications

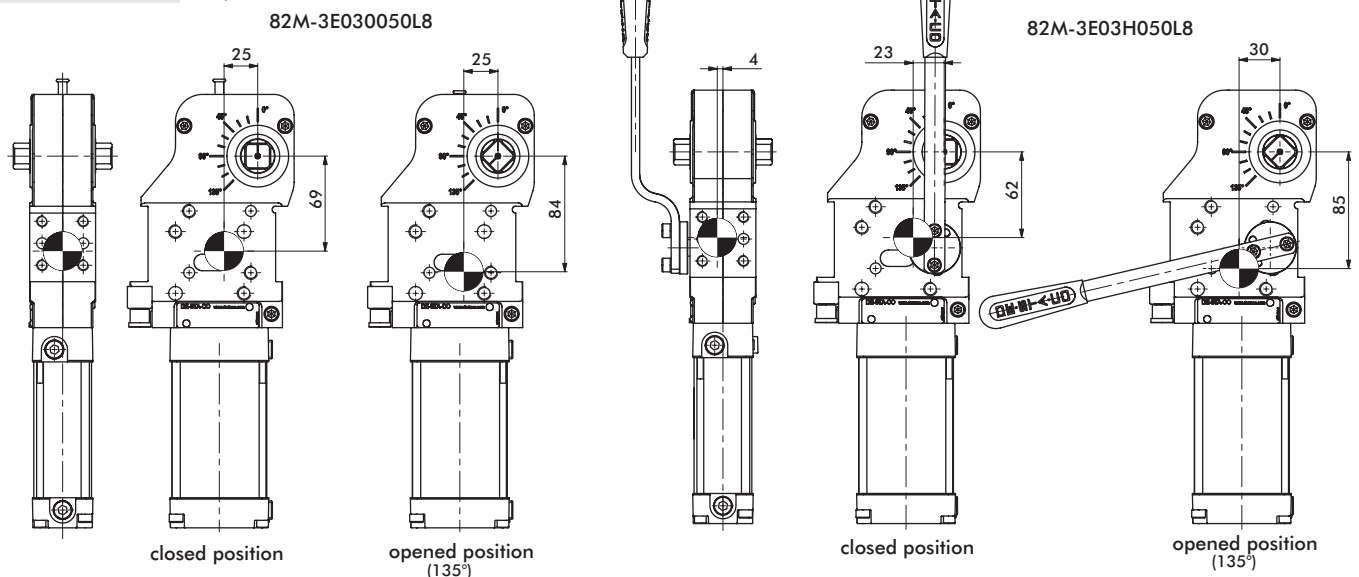
Model	Connection (C)	Max. Holding Torque (Nm)	Clamping Torque at 5 bar (Nm)	Cylinder Ø (mm)	Weight (kg)	Air Consumption per double stroke at 5 bar (liter)
82M-3E****50**	G 1/4	1300	270	50	2,8	1,6
82M-3E****5N**	1/4-18 NPT					



ATTENTION:
Calculation tool available. Please consult factory.

Center of Mass

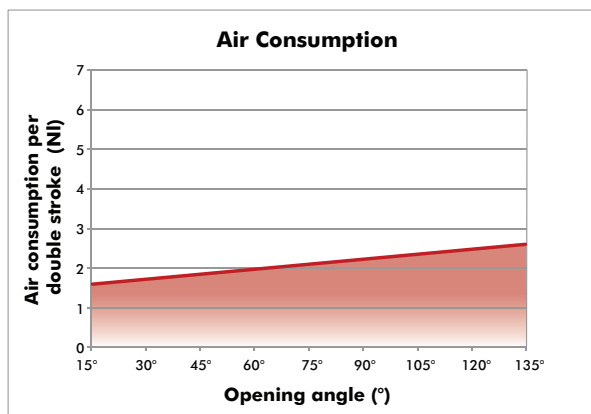
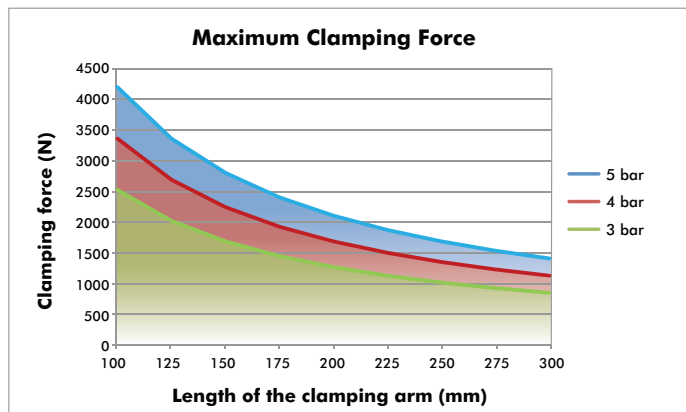
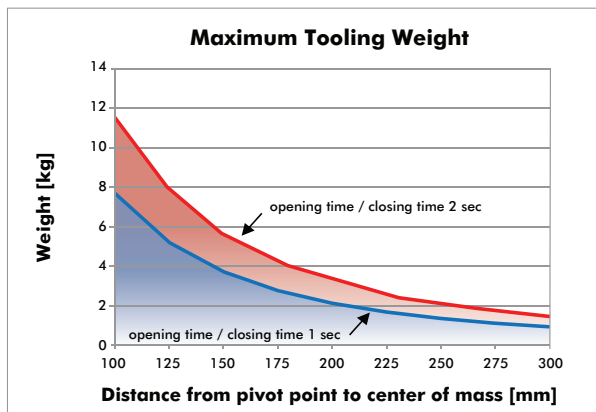
Model	Weight (kg)
82M-3E030050L*	2,8
82M-3E03H050L*	3,1



82M-3*****6* SERIES

Pneumatic Power Clamps | Technical Specifications

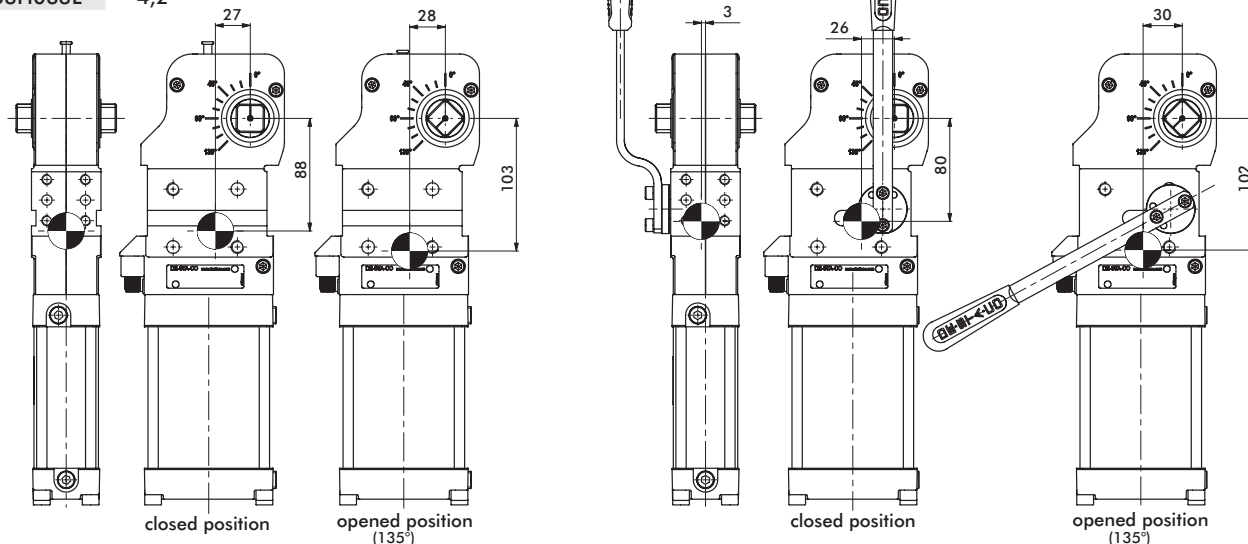
Model	Connection (C)	Max. Holding Torque (Nm)	Clamping Torque at 5 bar (Nm)	Cylinder Ø (mm)	Weight (kg)	Air Consumption per double stroke at 5 bar (liter)
82M-3E****63**	G 1/4	1800	420	63	3,8	2,6
82M-3N****63**						
82M-3E****6N**	1/4-18 NPT	1800	420	63	3,8	2,6
82M-3N****6N**						



ATTENTION:
Calculation tool available. Please consult factory.

Center of Mass

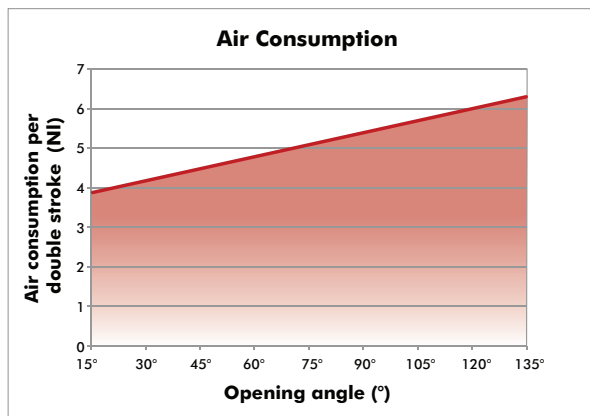
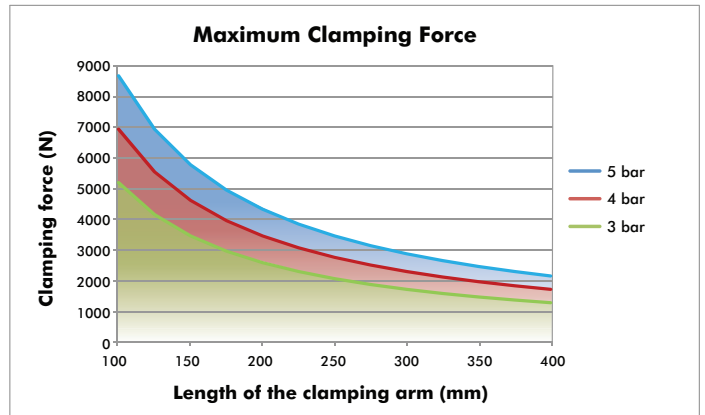
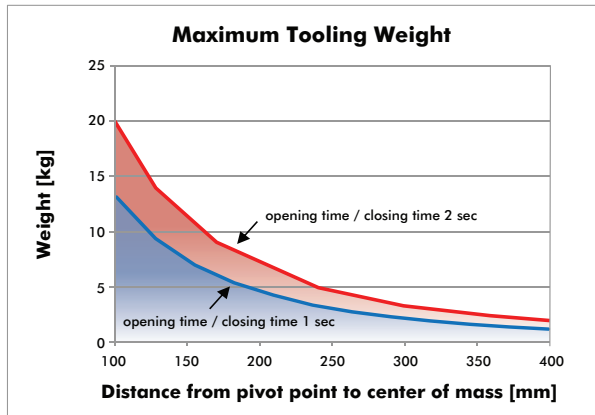
Model	Weight (kg)
82M-3E030063L*	3,8
82M-3E03H063L*	4,2



82M-3E****8* SERIES

Pneumatic Power Clamps | Technical Specifications

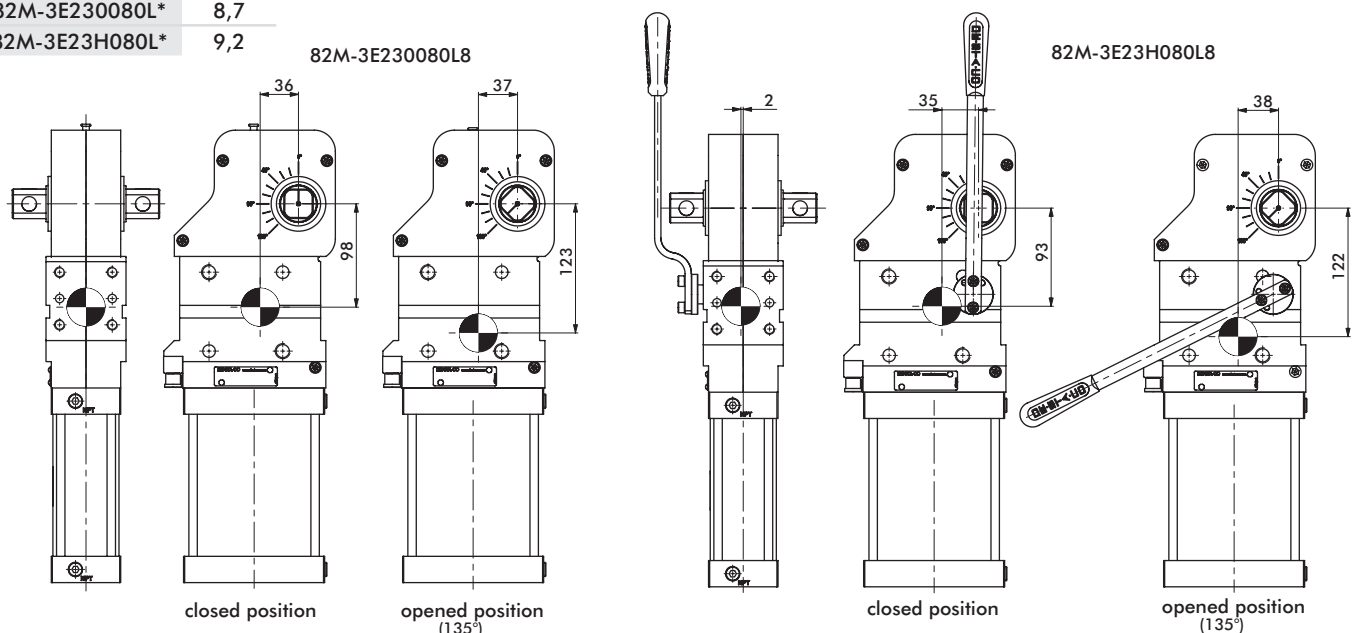
Model	Connection (C)	Max. Holding Torque (Nm)	Clamping Torque at 5 bar (Nm)	Cylinder Ø (mm)	Weight (kg)	Air Consumption per double stroke at 5 bar (liter)
82M-3E****80**	G 1/4	3000	850	80	8,7	6,3
82M-3E****8N**	1/4-18 NPT					



ATTENTION:
Calculation tool available. Please consult factory.

Model	Weight (kg)
82M-3E230080L*	8,7
82M-3E23H080L*	9,2

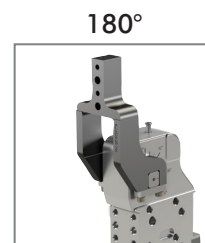
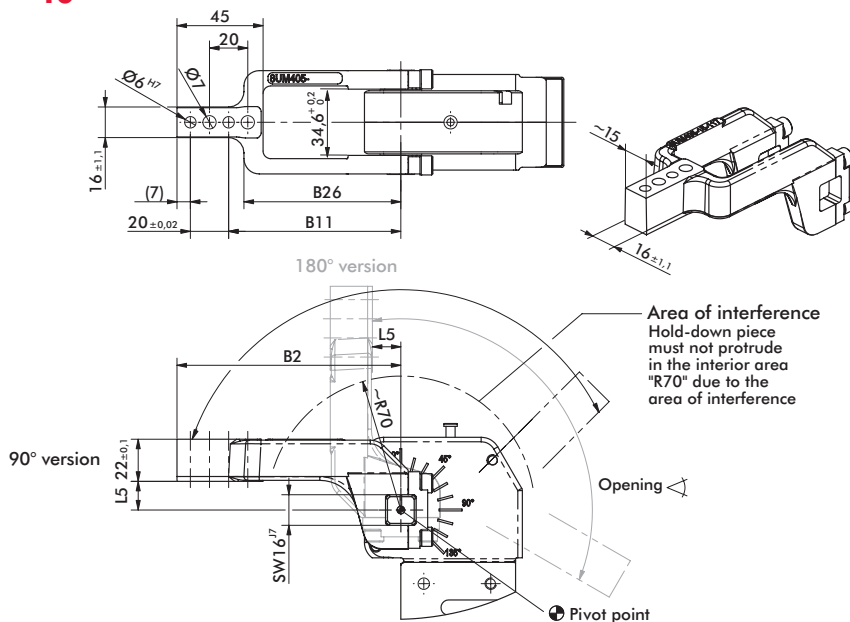
Series 82M-3E****8* Center of Mass



U-ARMS CENTER (STEEL)

Pneumatic Power Clamps | Dimensions and Technical Specifications

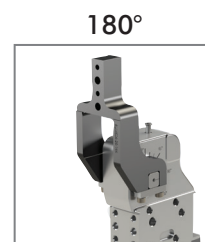
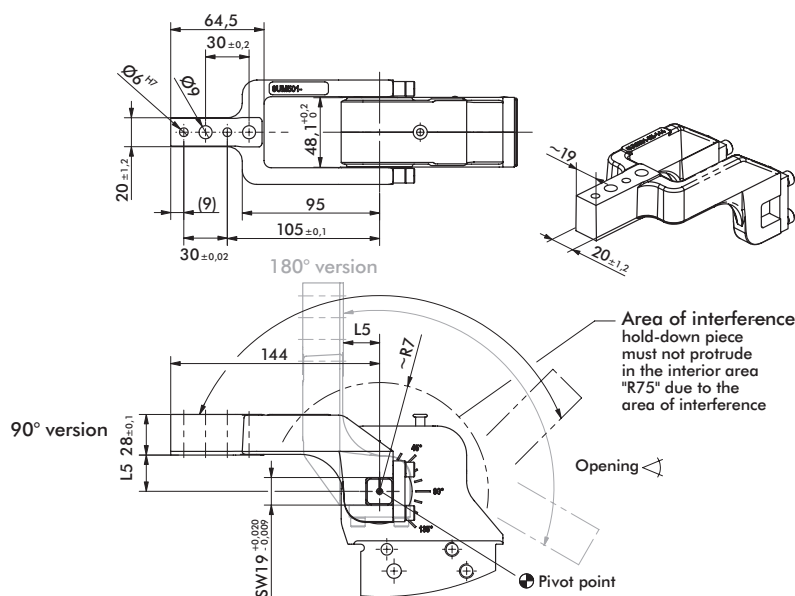
82M-3E****40**



8UM405-00-117
8UM405-15-117
8UM405-25-117
8UM405-45-107

Arm Model No.	Max. Opening 90° Version	Max. Opening 180° Version	Weight (kg)	B2	B11 ±0,1	B26	L5
8UM405-00-117		105°	0,45				0
8UM405-15-117	135°	120°	0,48	117	90	82	15
8UM405-25-117							25
8UM405-45-107	130°	135°	0,53	107	80	72	45

82M-3E****5***



8UM501-15-144
8UM501-25-144
8UM501-45-144

Arm Model No.	Max. Opening 90° Version	Max. Opening 180° Version	Weight (kg)	L5
8UM501-15-144		105°		15
8UM501-25-144	135°	120°	1,1	25
8UM501-45-144		135°		45

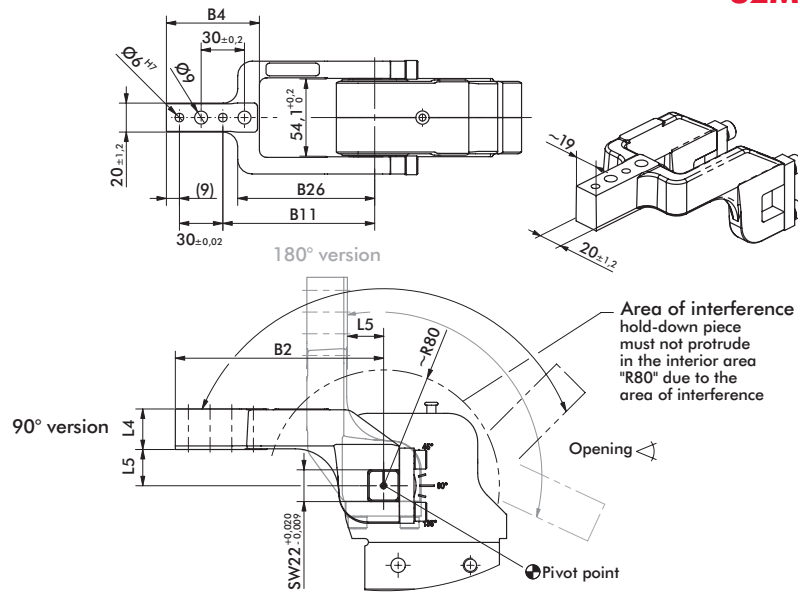
U-ARMS CENTER (STEEL)

Pneumatic Power Clamps | Dimensions and Technical Specifications

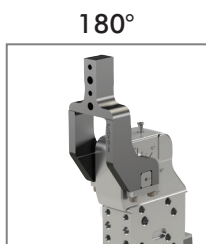


8UM631-15-144
8UM631-25-144
8UM631-45-144
8UM631-75-204

82M-3***6*****

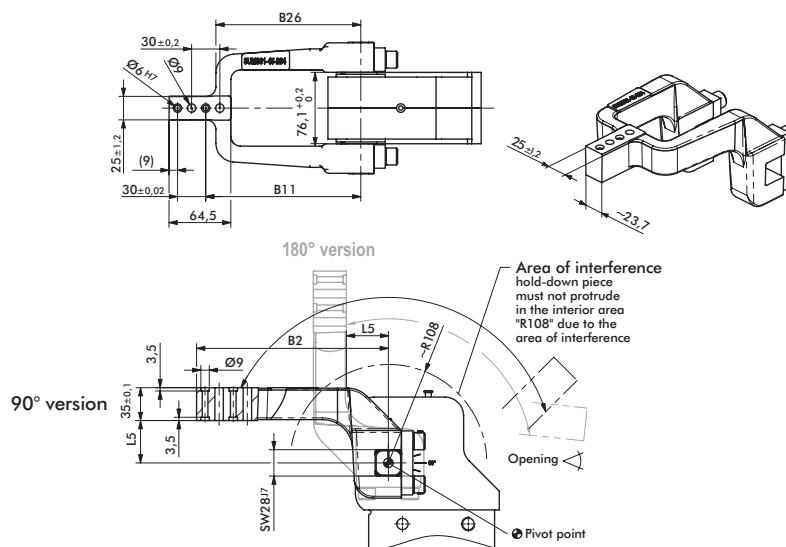


Arm Model No.	Max. Opening 90° Version	Max. Opening 180° Version	Weight (kg)	B2	B4	B11 ±0,1	B26	L4 ±0,1	L5
8UM631-15-144	135°	105°	1,1	144	64,5	105	95	28	15
8UM631-25-144		120°	1,2						25
8UM631-45-144		135°	1,3						45
8UM631-75-204		1,7	204						82



8JG-169-2-01
8UM801-45-204

82M-3E***8*****



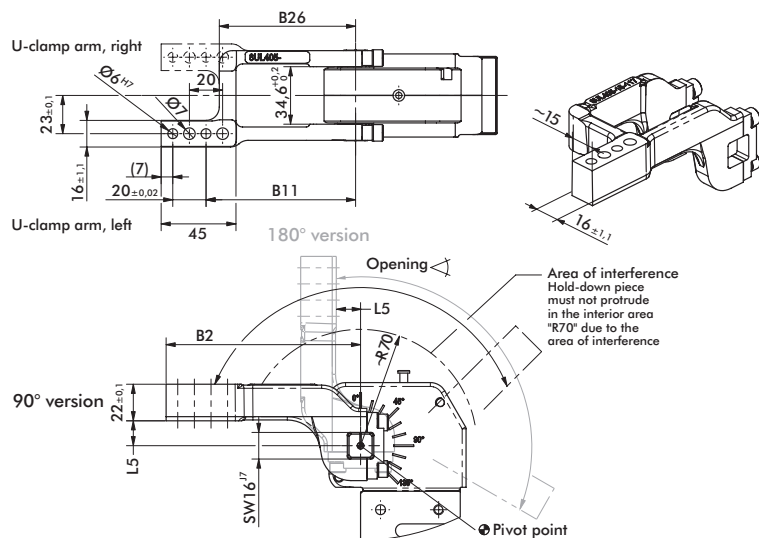
Arm Model No.	Max. Opening 90° Version	Max. Opening 180° Version	Weight (kg)	B2	B11 ±0,1	B26	L5* ±0,2
8JG-169-2-01	135°	105°	3,5	179	140	129	20
8UM801-45-204		135°	4,1	204	165	154	45

*Tolerance measured 80mm from pivot point.

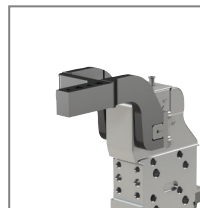
U-ARMS OFFSET (STEEL)

Pneumatic Power Clamps | Dimensions and Technical Specifications

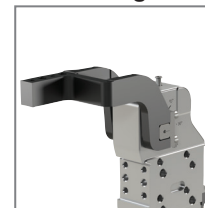
82M-3E****40**



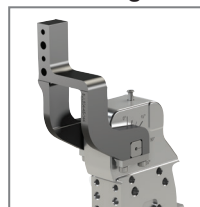
90° Left



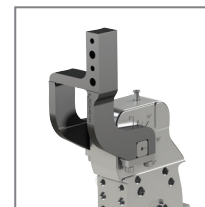
90° Right



180° Right*



180° Left*



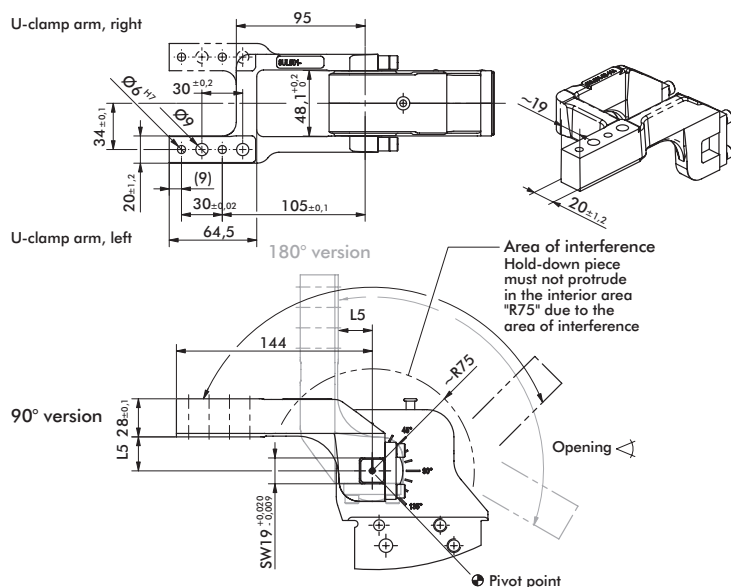
8UL405-00-117
8UL405-15-117
8UL405-25-117
8UL405-45-107

8UR405-00-117
8UR405-15-117
8UR405-25-117
8UR405-45-107

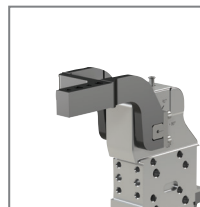
*90° left/180° right uses same clamp arm.
90° right/180° left uses same clamp arm.

Arm Model No.	Max. Opening 90° Version	Max. Opening 180° Version	Weight (kg)	B2	B11 ±0,1	B26	L5
8U(•)405-00-117		105°	0,47				0
8U(•)405-15-117	135°	120°	0,52	117	90	82	15
8U(•)405-25-117		135°	0,55				25
8U(•)405-45-107	130°		0,54	107	80	72	45

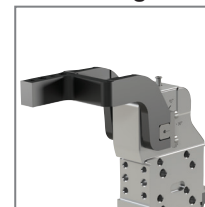
82M-3E****5***



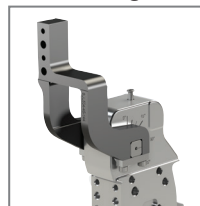
90° Left



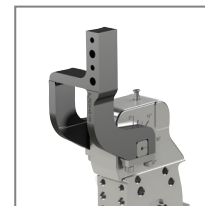
90° Right



180° Right*



180° Left*



8UL501-15-144
8UL501-25-144
8UL501-45-144

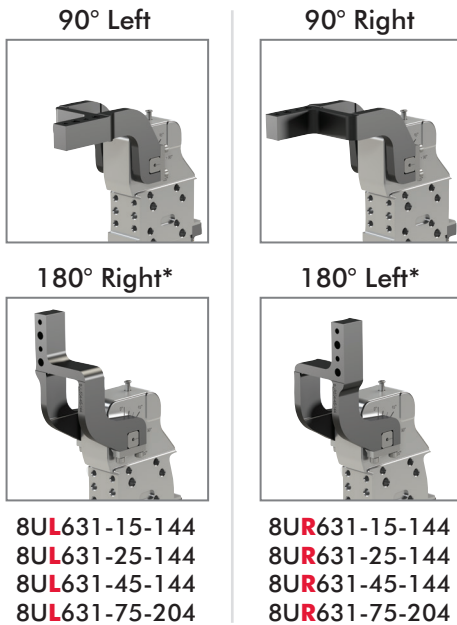
8UR501-15-144
8UR501-25-144
8UR501-45-144

*90° left/180° right uses same clamp arm.
90° right/180° left uses same clamp arm.

Arm Model No.	Max. Opening 90° Version	Max. Opening 180° Version	Weight (kg)	L5
8U(•)501-15-144		105°	1,1	15
8U(•)501-25-144	135°	120°	1,2	25
8U(•)501-45-144		135°		45

U-ARMS OFFSET (STEEL)

Pneumatic Power Clamps | Dimensions and Technical Specifications

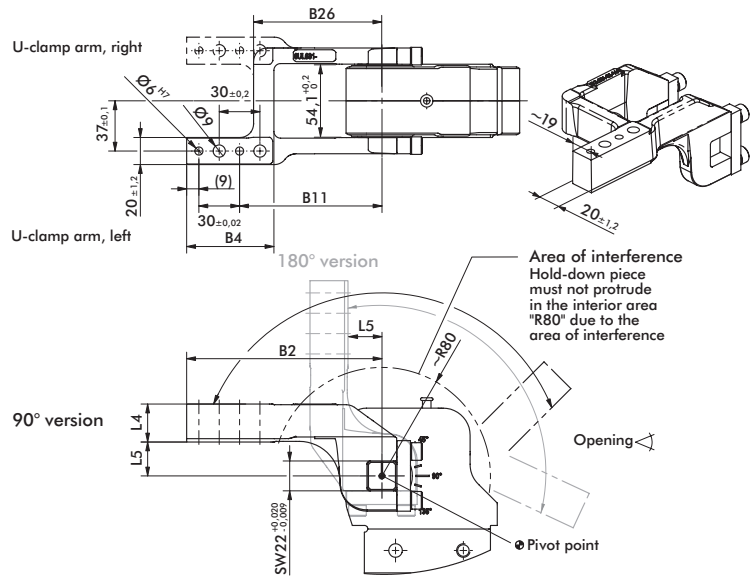


8UL631-15-144
8UL631-25-144
8UL631-45-144
8UL631-75-204

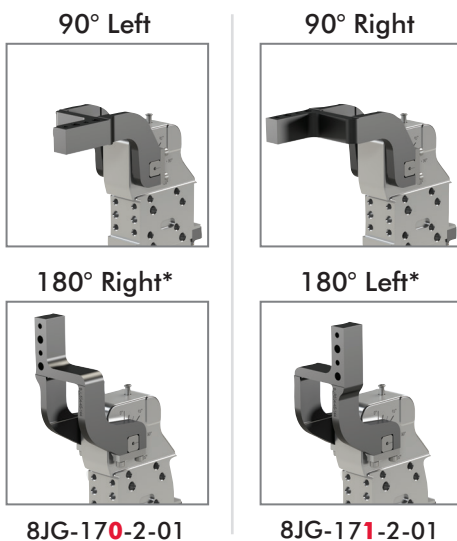
8UR631-15-144
8UR631-25-144
8UR631-45-144
8UR631-75-204

*90° left/180° right uses same clamp arm.
90° right/180° left uses same clamp arm.

82M-3***6*****



Arm Model No.	Max. Opening 90° Version	Max. Opening 180° Version	Weight (kg)	B2	B4	B11 ±0,1	B26	L4 ±0,1	L5
8U(•)631-15-144	135°	105°	1,2	144	64,5	105	95	28	15
8U(•)631-25-144		120°	1,2						25
8U(•)631-45-144		135°	1,3						45
8U(•)631-75-204		135°	1,9						204

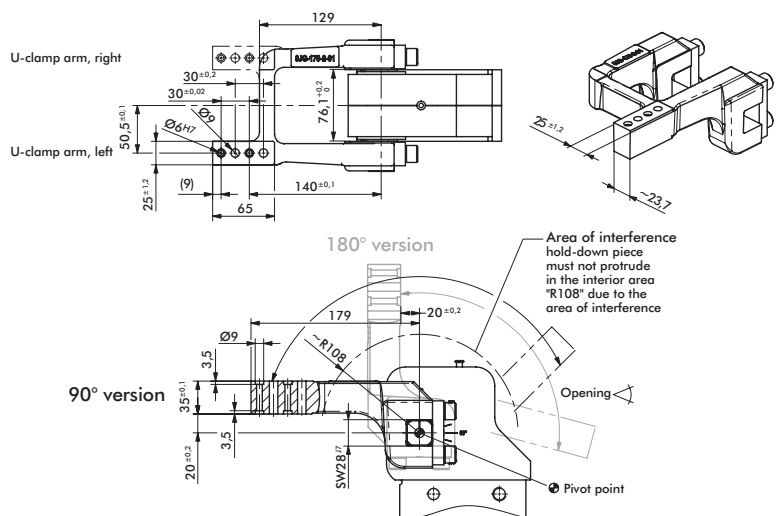


8JG-170-2-01

8JG-171-2-01

*90° left/180° right uses same clamp arm.
90° right/180° left uses same clamp arm.

82M-3E***8*****

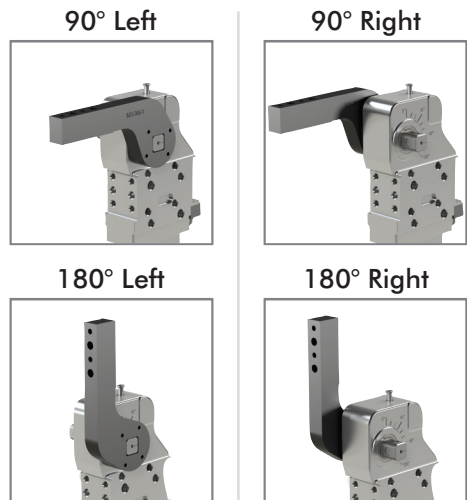
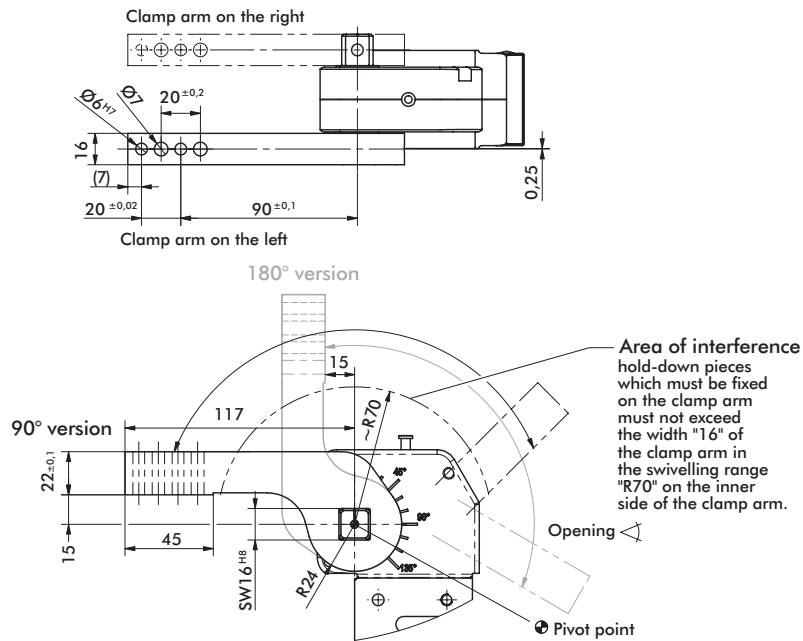


Arm Model No.	Max. Opening 90° Version	Max. Opening 180° Version	Weight (kg)
8JG-17(•)-2-01	135°	105°	3,5

LATERAL (SIDE) ARMS

Pneumatic Power Clamps | Dimensions and Technical Specifications

82M-3E****40**

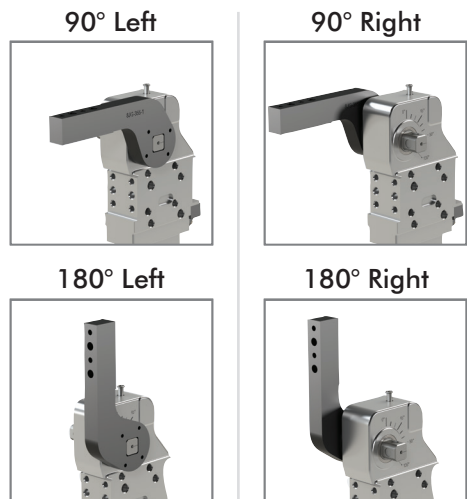
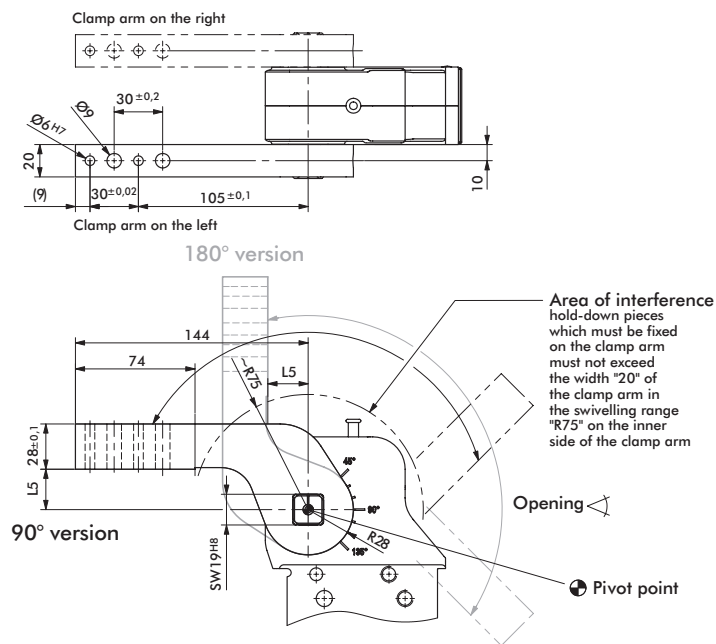


8S401-15-117

Arm Model No.	Max. Opening 90° Version	Max. Opening 180° Version	Weight (kg)
8S401-15-117	135°	120°	0,5

Models with 2 lateral clamp arms requires 2 clamp arm sets.

82M-3E****5***



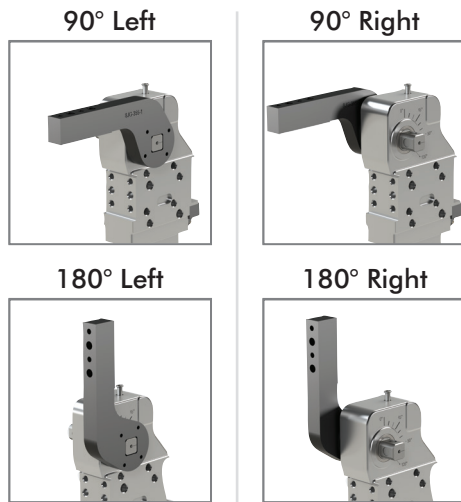
8JG-070-1-01
8S501-25-144

Arm Model No.	Max. Opening 90° Version	Max. Opening 180° Version	Weight (kg)	L5
8JG-070-1-01	135°	135°	0,9	15
8S501-25-144			1,0	25

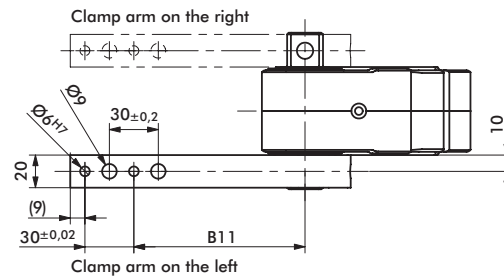
Models with 2 lateral clamp arms requires 2 clamp arm sets.

LATERAL (SIDE) ARMS

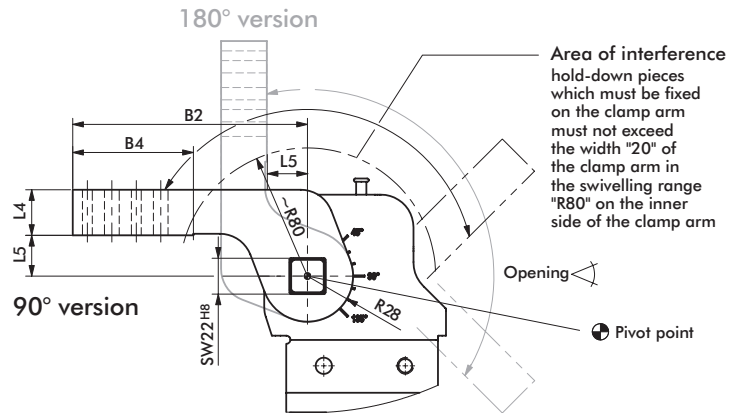
Pneumatic Power Clamps | Dimensions and Technical Specifications



8JG-080-1-01
8S631-25-144
8S631-45-144
8S631-75-204

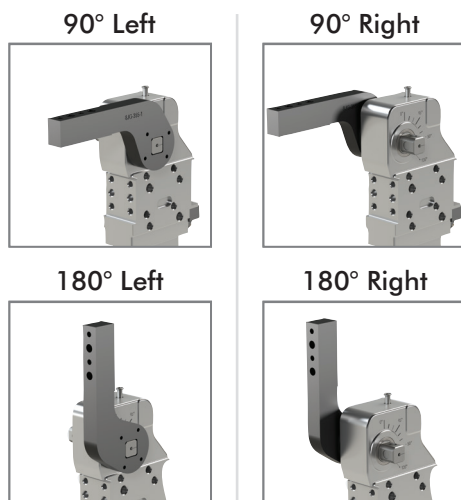


82M-3***6*****

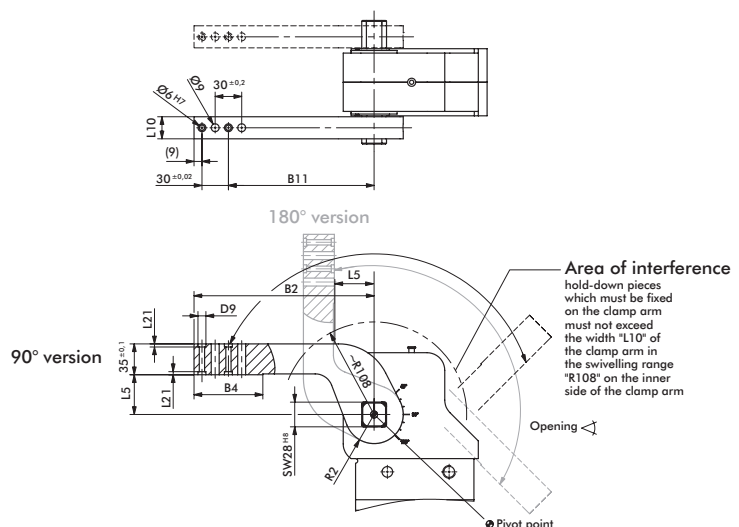


Arm Model No.	Max. Opening 90° Version	Max. Opening 180° Version	Weight (kg)	B2	B4	B11 ±0,1	L4 ±0,1	L5
8JG-080-1-01	135°	135°	0,9	144	74	105	28	15
8S631-25-144			1,0					25
8S631-45-144			1,1					45
8S631-75-204			1,5					75

Models with 2 lateral clamp arms requires 2 clamp arm sets.



8JG-1179-1-01
8S801-45-204



82M-3E***8*****

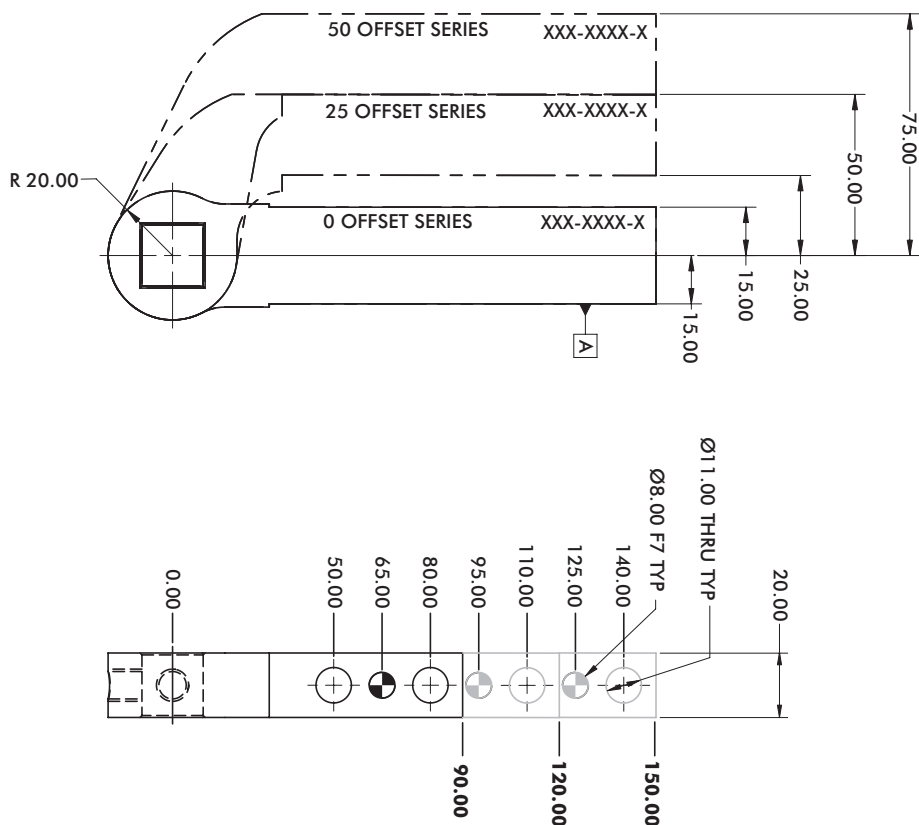
Arm Model No.	Max. Opening 90° Version	Max. Opening 180° Version	Weight (kg)	B2	B4	D9	B11 ±0,1	L5	L10	L21	R2
8JG-1179-1-01	135°	135°	2,1	179	74	-	140	20	30	-	35
8S801-45-204				204	78	9	165	45	25	3,5	33

Models with 2 lateral clamp arms requires 2 clamp arm sets.

LATERAL (SIDE) ARMS, NAAMS-STYLE

Pneumatic Power Clamps | Dimensions and Technical Specifications

82M-3E 50mm



9mm Thru Hole (6.00 H7 Dowel)

90mm [3.54"] Arm Length			120mm [4.72"] Arm Length			150mm [5.90"] Arm Length		
Series	Arm Style	Model	Series	Arm Style	Model	Series	Arm Style	Model
50 Offset	▲ • 3256	B8JG-3256-1	50 Offset	▲ • 3257	B8JG-3257-1	50 Offset	▲ • 3258	B8JG-3258-1
25 Offset	▲ • 3246	B8JG-3246-1	25 Offset	▲ • 3247	B8JG-3247-1	25 Offset	▲ • 3248	B8JG-3248-1
0 Offset	▲ • 3236	B8JG-3236-1	0 Offset	▲ • 3237	B8JG-3237-1	0 Offset	▲ • 3238	B8JG-3238-1

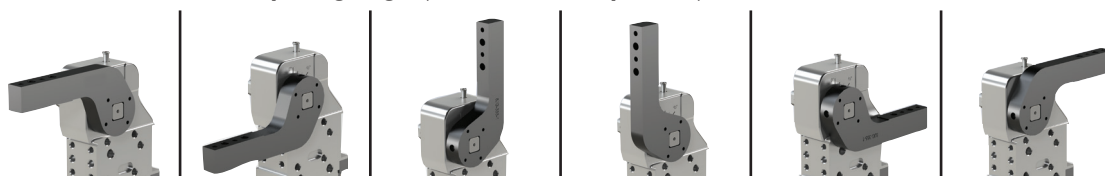
11mm Thru Hole (8.00 F7 Dowel)

90mm [3.54"] Arm Length			120mm [4.72"] Arm Length			150mm [5.90"] Arm Length		
Series	Arm Style	Model	Series	Arm Style	Model	Series	Arm Style	Model
50 Offset	▲ • 1226	B8JG-1226-1	50 Offset	▲ • 1227	B8JG-1227-1	50 Offset	▲ • 1228	B8JG-1228-1
25 Offset	▲ • 1216	B8JG-1216-1	25 Offset	▲ • 1217	B8JG-1217-1	25 Offset	▲ • 1218	B8JG-1218-1
0 Offset	▲ • 1206	B8JG-1206-1	0 Offset	▲ • 1207	B8JG-1207-1	0 Offset	▲ • 1208	B8JG-1208-1

▲ Common in North America

(•) STANDARD ARM OFFERING

Maximum Opening Angle (shown in locked position)

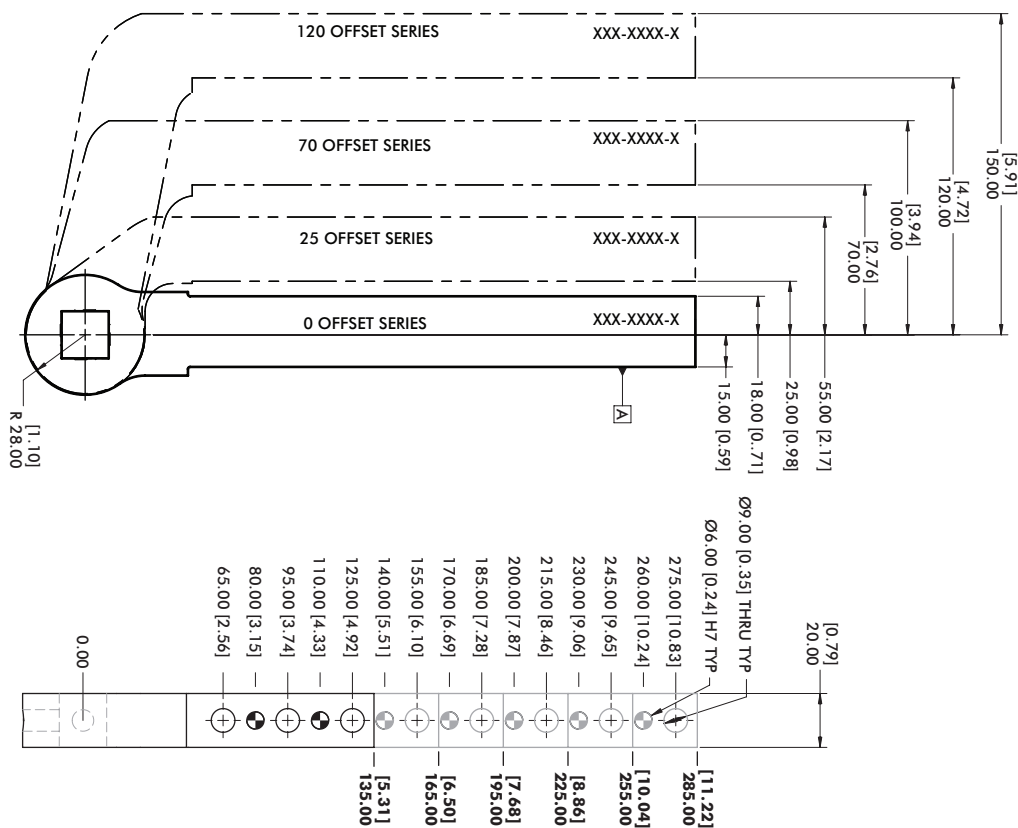


Arm Styles	1206-1208/3236-3238	1216-1218/3246-3248	1226-1228/3256-3258	1206-1207	1216-1217	1226-1227	1206-1208	1216-1218	1226-1228
1206-1208/3236-3238	135°	135°	100°	100°	N/A	N/A	N/A	N/A	N/A
1216-1218/3246-3248	135°	N/A	50°	125°	N/A	30°	N/A	N/A	30°
1226-1228/3256-3258	125°	N/A	35°	135°	N/A	50°	N/A	N/A	50°

LATERAL (SIDE) ARMS, NAAMS-STYLE

Pneumatic Power Clamps | Dimensions and Technical Specifications

82M-3* 63mm for 23 Clamp Arm Shaft Option



135mm [5.31"] Arm Length

Series	Arm Style	Model
120 Offset	▲ 1543	B8JG-1543-1
70 Offset	▲ 1531	B8JG-1531-1
25 Offset	▲ 1519	B8JG-1519-1
0 Offset	▲ 1507	B8JG-1507-1

165mm [6.50"] Arm Length

Series	Arm Style	Model
120 Offset	▲ 1544	B8JG-1544-1
70 Offset	▲ 1532	B8JG-1532-1
25 Offset	▲ 1520	B8JG-1520-1
0 Offset	▲ 1508	B8JG-1508-1

195mm [7.68"] Arm Length

Series	Arm Style	Model
120 Offset	▲ 1545	B8JG-1545-1
70 Offset	▲ 1533	B8JG-1533-1
25 Offset	▲ 1521	B8JG-1521-1
0 Offset	▲ 1509	B8JG-1509-1

225mm [8.86"] Arm Length

Series	Arm Style	Model
120 Offset	▲ 1546	B8JG-1546-1
70 Offset	▲ 1534	B8JG-1534-1
25 Offset	▲ 1522	B8JG-1522-1
0 Offset	▲ 1510	B8JG-1510-1

255mm [10.04"] Arm Length

Series	Arm Style	Model
120 Offset	▲ 1547	B8JG-1547-1
70 Offset	▲ 1535	B8JG-1535-1
25 Offset	▲ 1523	B8JG-1523-1
0 Offset	▲ 1511	B8JG-1511-1

285mm [11.22"] Arm Length

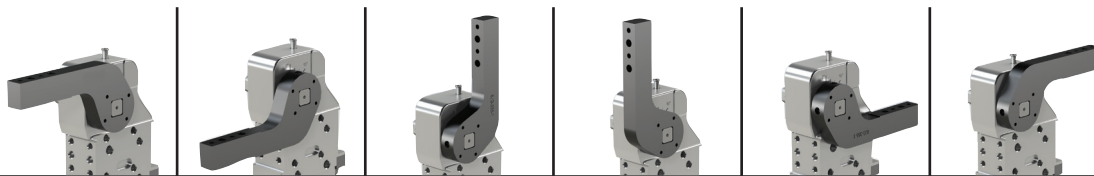
Series	Arm Style	Model
120 Offset	▲ 1548	B8JG-1548-1
70 Offset	▲ 1536	B8JG-1536-1
25 Offset	▲ 1524	B8JG-1524-1
0 Offset	▲ 1512	B8JG-1512-1

▲ Common in North America

(•) STANDARD ARM OFFERING

(i) NON-STANDARD ARM OFFERING (extended leadtimes apply)

Maximum Opening Angle (shown in locked position)

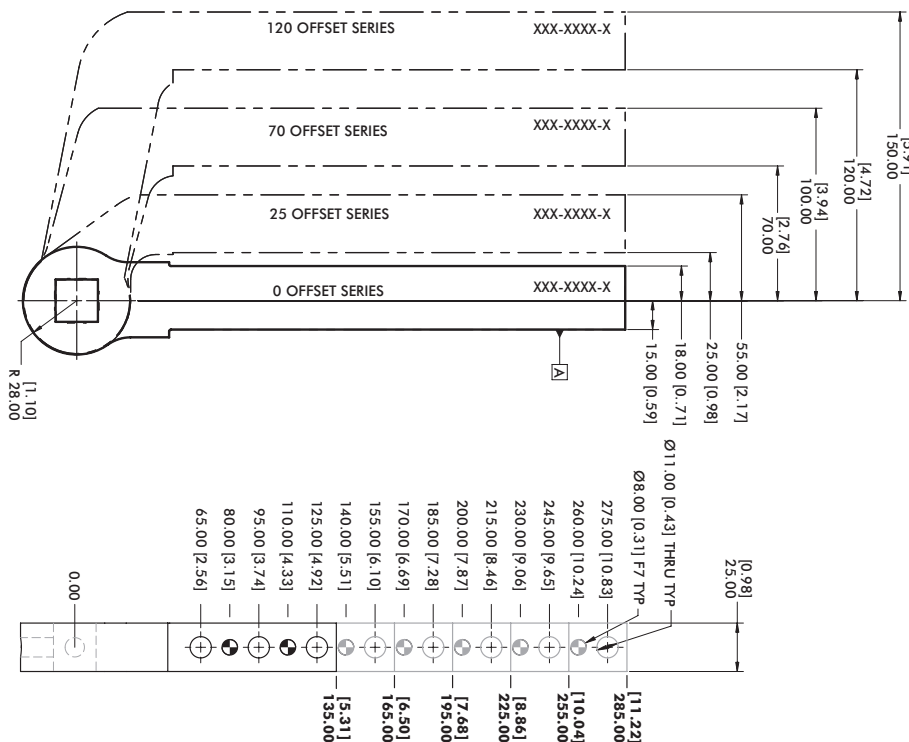


Arm Styles	135°	135°	100°	100°	N/A	N/A
1510-1512/1507-1509	135°	135°	100°	100°	N/A	N/A
1522-1524/1519-1521	135°	N/A	50°	130°	N/A	40°
1534-1536/1531-1533	115°	N/A	25°	135°	N/A	75°
1546-1548/1543-1545	110°	N/A	20°	135°	N/A	85°

LATERAL (SIDE) ARMS, NAAMS-STYLE

Pneumatic Power Clamps | Dimensions and Technical Specifications

82M-3* 63mm for D0 Clamp Arm Shaft Option

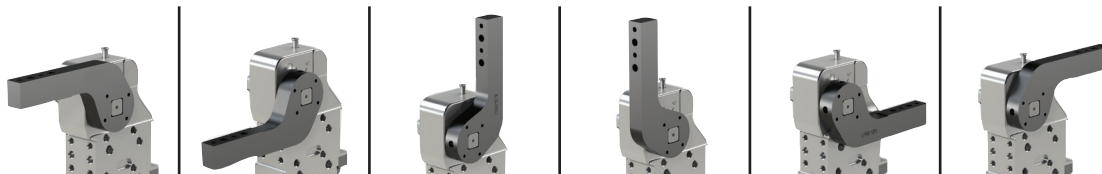


135mm [5.31"] Arm Length			165mm [6.50"] Arm Length			195mm [7.68"] Arm Length		
Series	Arm Style	Model	Series	Arm Style	Model	Series	Arm Style	Model
120 Offset	▲ • 1043	B8JG-1043-1	120 Offset	▲ ⓘ 1044	B8JG-1044-1	120 Offset	▲ ⓘ 1045	B8JG-1045-1
70 Offset	▲ • 1031	B8JG-1031-1	70 Offset	▲ • 1032	B8JG-1032-1	70 Offset	▲ • 1033	B8JG-1033-1
25 Offset	▲ • 1019	B8JG-1019-1	25 Offset	▲ • 1020	B8JG-1020-1	25 Offset	▲ ⓘ 1021	B8JG-1021-1
0 Offset	▲ • 1007	B8JG-1007-1	0 Offset	▲ • 1008	B8JG-1008-1	0 Offset	▲ • 1009	B8JG-1009-1

225mm [8.86"] Arm Length			255mm [10.04"] Arm Length			285mm [11.22"] Arm Length		
Series	Arm Style	Model	Series	Arm Style	Model	Series	Arm Style	Model
120 Offset	▲ ⓘ 1046	B8JG-1046-1	120 Offset	▲ ⓘ 1047	B8JG-1047-1	120 Offset	▲ ⓘ 1048	B8JG-1048-1
70 Offset	▲ • 1034	B8JG-1034-1	70 Offset	▲ • 1035	B8JG-1035-1	70 Offset	▲ ⓘ 1036	B8JG-1036-1
25 Offset	▲ ⓘ 1022	B8JG-1022-1	25 Offset	▲ ⓘ 1023	B8JG-1023-1	25 Offset	▲ ⓘ 1024	B8JG-1024-1
0 Offset	▲ ⓘ 1010	B8JG-1010-1	0 Offset	▲ ⓘ 1011	B8JG-1011-1	0 Offset	▲ ⓘ 1012	B8JG-1012-1

▲ Common in North America (•) STANDARD ARM OFFERING ⓘ NON-STANDARD ARM OFFERING (extended leadtimes apply)

Maximum Opening Angle (shown in locked position)

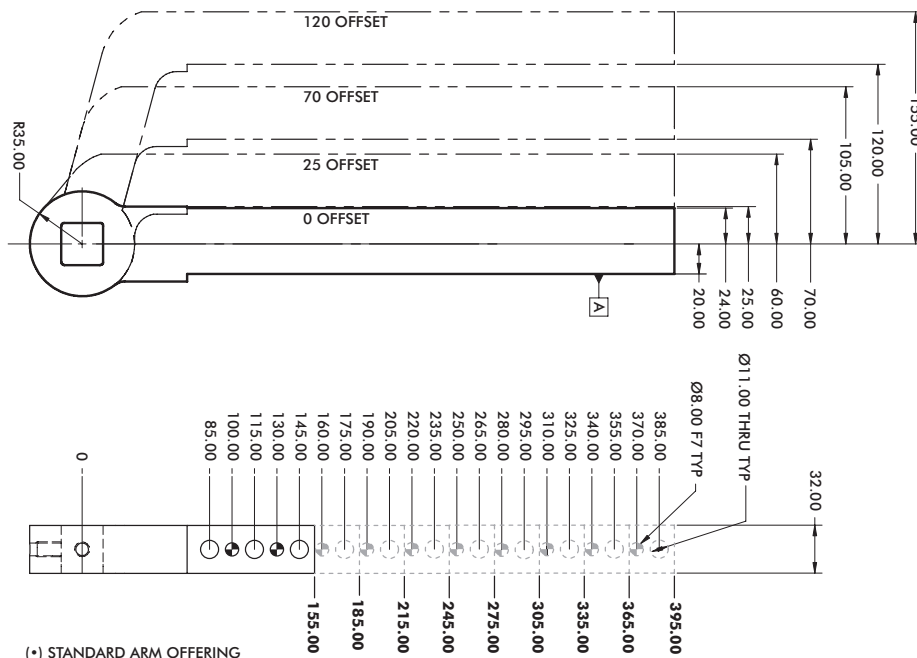


Arm Styles	135°	135°	100°	100°	N/A	N/A
1010-1012/1007-1009	135°	135°	100°	100°	N/A	N/A
1022-1024/1019-1021	135°	N/A	50°	130°	N/A	40°
1034-1036/1031-1033	115°	N/A	25°	135°	N/A	75°
1046-1048/1043-1045	110°	N/A	20°	135°	N/A	85°

LATERAL (SIDE) ARMS, NAAMS-STYLE

Pneumatic Power Clamps | Dimensions and Technical Specifications

82M-3E 80mm



155mm [4.53"] Arm Length			185mm [7.28"] Arm Length			215mm [8.46"] Arm Length		
Series	Arm Style	Model	Series	Arm Style	Model	Series	Arm Style	Model
120 Offset	▲ ⓘ 170	B8JG-1170-1	120 Offset	▲ ⓘ 171	B8JG-1171-1	120 Offset	▲ ⓘ 172	B8JG-1172-1
70 Offset	▲ • 150	B8JG-1150-1	70 Offset	▲ ⓘ 151	B8JG-1151-1	70 Offset	▲ ⓘ 152	B8JG-1152-1
25 Offset	▲ ⓘ 130	B8JG-1130-1	25 Offset	▲ ⓘ 131	B8JG-1131-1	25 Offset	▲ ⓘ 132	B8JG-1132-1
0 Offset	▲ ⓘ 110	B8JG-1110-1	0 Offset	▲ ⓘ 111	B8JG-1111-1	0 Offset	▲ • 112	B8JG-1112-1

245mm [9.65"] Arm Length			275mm [10.83"] Arm Length			305mm [12.00"] Arm Length		
Series	Arm Style	Model	Series	Arm Style	Model	Series	Arm Style	Model
120 Offset	▲ ⓘ 173	B8JG-1173-1	120 Offset	▲ ⓘ 174	B8JG-1174-1	120 Offset	▲ ⓘ 175	B8JG-1175-1
70 Offset	▲ ⓘ 153	B8JG-1153-1	70 Offset	▲ ⓘ 154	B8JG-1154-1	70 Offset	▲ • 155	B8JG-1155-1
25 Offset	▲ ⓘ 133	B8JG-1133-1	25 Offset	▲ • 134	B8JG-1134-1	25 Offset	▲ ⓘ 135	B8JG-1135-1
0 Offset	▲ ⓘ 113	B8JG-1113-1	0 Offset	▲ ⓘ 114	B8JG-1114-1	0 Offset	▲ ⓘ 115	B8JG-1115-1

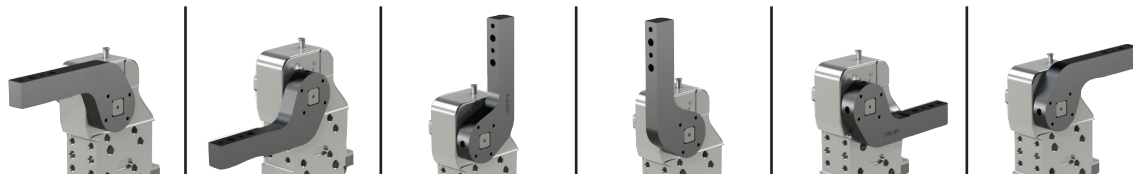
335mm [13.19"] Arm Length			365mm [14.37"] Arm Length			395mm [15.55"] Arm Length		
Series	Arm Style	Model	Series	Arm Style	Model	Series	Arm Style	Model
120 Offset	▲ ⓘ 176	B8JG-1176-1	120 Offset	▲ ⓘ 177	B8JG-1177-1	120 Offset	▲ ⓘ 178	B8JG-1178-1
70 Offset	▲ ⓘ 156	B8JG-1156-1	70 Offset	▲ ⓘ 157	B8JG-1157-1	70 Offset	▲ • 158	B8JG-1158-1
25 Offset	▲ ⓘ 136	B8JG-1136-1	25 Offset	▲ ⓘ 137	B8JG-1137-1	25 Offset	▲ ⓘ 138	B8JG-1138-1
0 Offset	▲ ⓘ 116	B8JG-1116-1	0 Offset	▲ ⓘ 117	B8JG-1117-1	0 Offset	▲ • 118	B8JG-1118-1

▲ Common in North America

(*) STANDARD ARM OFFERING

ⓘ NON-STANDARD ARM OFFERING (extended leadtimes apply)

Maximum Opening Angle (shown in locked position)

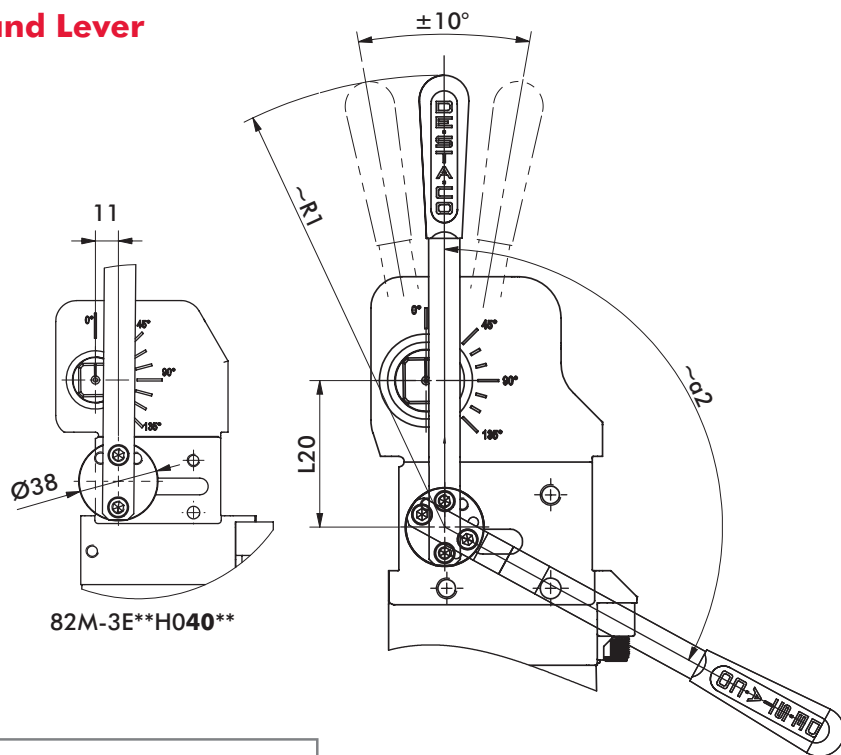


Arm Styles	1110 - 1118	1130 - 1138	1150 - 1158	1170 - 1178
1110 - 1118	135°	135°	100°	100°
1130 - 1138	135°	N/A	60°	120°
1150 - 1158	125°	N/A	35°	135°
1170 - 1178	115°	N/A	25°	135°

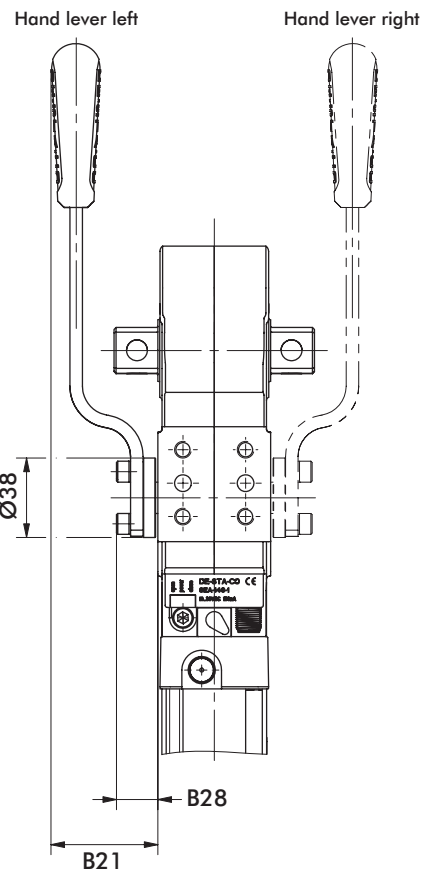
82M-3E ACCESSORIES

Pneumatic Power Clamps | Dimensions and Technical Specifications

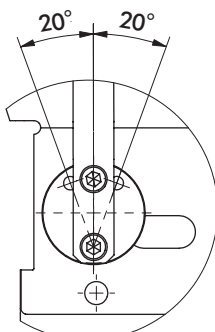
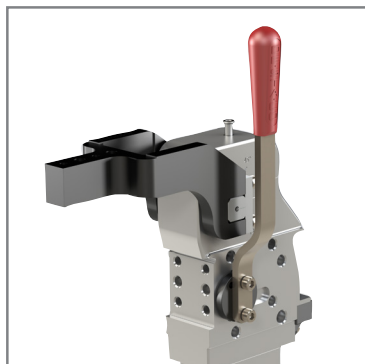
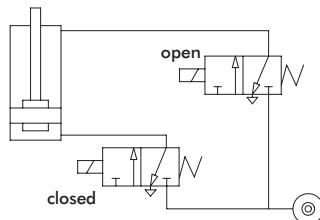
Hand Lever



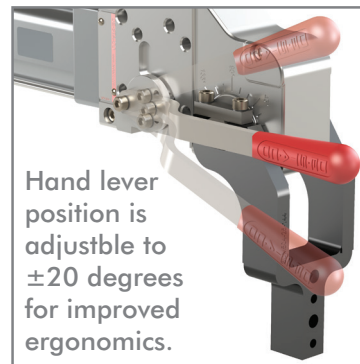
82M-3E**H040**



Pneumatic circuit required for manual and pneumatic actuation.



Hand lever can be mounted in 3 positions



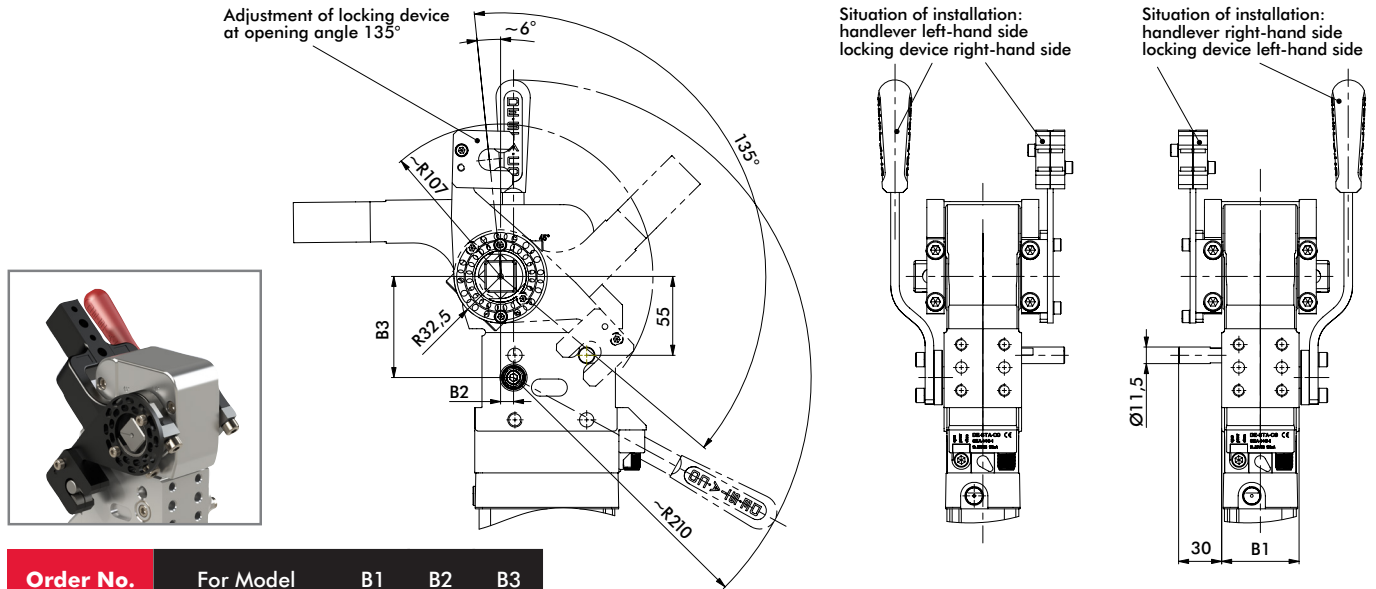
Hand lever position is adjustable to ± 20 degrees for improved ergonomics.

Model No.	Swivel Angle $\alpha 2$ (with reference to opening angle of clamp arm)													
	B21	B28	L20	~R1	0°	15°	30°	45°	60°	75°	90°	105°	120°	135°
82M-3E..H040..	27	24	48,5	190	0°	31°	41°	49°	58°	69°	88°	113°	134°	144°
82M-3E..H05...	52	20	70	218	1°	32°	40°	48°	55°	63°	72°	83°	95°	105°
82M-3E..H06..	52	20	70,5	218	0°	30°	39°	47°	56°	66°	79°	94°	108°	119°
82M-3E..H08..	56	24	82	268	-1°	28°	37°	45°	53°	63°	75°	92°	107°	117°

82M-3E ACCESSORIES

Pneumatic Power Clamps | Dimensions and Technical Specifications

Locking Device for Hand Lever

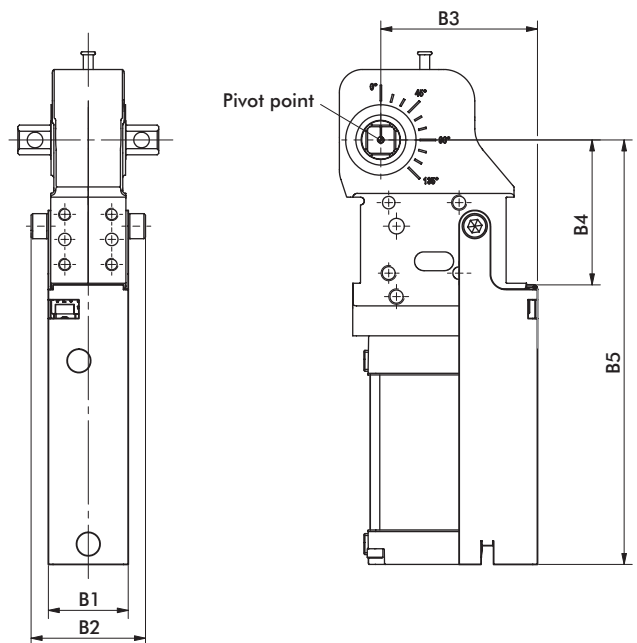


Order No.	For Model	B1	B2	B3
82ZB-084-1	82M-3E**H05***	48	7	70
82ZB-039-1	82M-3E**H06***	54	9	70,5

Anti-Ramming Device



Using of the anti-ramming device is only possible with 82M-3E*****00 and 82M-3E*****L8



Order No.	For Model	B1	B2	B3	B4	B5
8AB-151-1	82M-3E****40**	53	66,5	89,5	65,5	210,5
8AB-152-1	82M-3E****5***	51	73	100	92,5	271
8AB-153-1	82M-3E****6***	57	79	120	104,5	296
8AB-154-1	82M-3E****8***	79	105,5	148	142,5	360

Cable and Connector

Order No.	Description
8EL-002-1	M12x1, Straight, 5-pin Connector with 5m Cable
8EL-003-1	M12x1, Angular, 4-pin Connector with 5m Cable

