



# Spring Plungers

ball style, slotted, stainless steel



### Material:

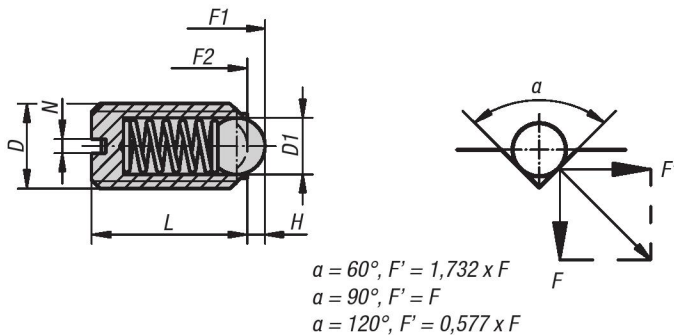
Body in stainless steel 1.4305;  
ball in stainless steel 1.4034;  
spring in stainless steel 1.4310

### Type:

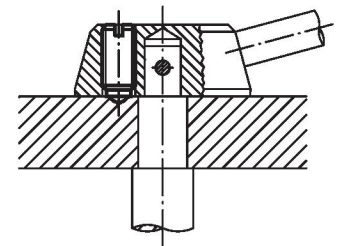
Natural finish. Ball hardened.

### Part Number Example:

K0310.AD



Application Diagram



## KIPP Spring Plungers, ball style, slotted, stainless steel, standard end pressure, inch

Item No.	D	D1	L	H	N	Spring force initial pressure F1 approx. N	Spring force final pressure F2 approx. N
K0310.AD	6-32	1.5	7	0.4	0.4	1.5	3
K0310.AG	8-36	2.5	9	0.8	0.6	4	10
K0310.AE	8-32	2.5	9	0.8	0.6	4	10
K0310.A1	10-32	3	12	0.9	0.8	6	11
K0310.AJ	1/4-28	3.5	14	1	1	9	13
K0310.A2	1/4-20	3.5	14	1	1	9	13
K0310.A3	5/16-18	5	16	1.5	1.2	15	30
K0310.A4	3/8-16	6	19	2	1.6	20	35
K0310.A5	1/2-13	8	22	2.5	2	30	55
K0310.A6	5/8-11	10	24	3.5	2.5	65	125



# Spring Plungers

ball style, slotted, stainless steel

## KIPP Spring Plungers, ball style, slotted, stainless steel, heavy end pressure, inch

Item No.	D	D1	L	H	N	Spring force initial pressure F1 approx. N	Spring force final pressure F2 approx. N
K0310.2A1	10-32	3	12	0.9	0.8	19	30
K0310.2AJ	1/4-28	3.5	14	1	1	28	40
K0310.2A2	1/4-20	3.5	14	1	1	28	40
K0310.2A3	5/16-18	5	16	1.5	1.2	47	73
K0310.2A4	3/8-16	6	19	2	1.6	66	100
K0310.2A5	1/2-13	8	22	2.5	2	66	120
K0310.2A6	5/8-11	10	24	3.5	2.5	90	180

## KIPP Spring Plungers, ball style, slotted, stainless steel, standard end pressure, metric

Item No.	D	D1	L	H	N	Spring force initial pressure F1 approx. N	Spring force final pressure F2 approx. N
K0310.03	M3	1,5	7	0,4	0,4	1,5	3
K0310.04	M4	2,5	9	0,8	0,6	4	10
K0310.05	M5	3	12	0,9	0,8	6	11
K0310.06	M6	3,5	14	1	1	9	13
K0310.08	M8	5	16	1,5	1,2	15	30
K0310.10	M10	6	19	2	1,6	20	35
K0310.12	M12	8	22	2,5	2	30	55
K0310.16	M16	10	24	3,5	2,5	65	125
K0310.20	M20	12	30	4,5	2,5	80	160

## KIPP Spring Plungers, ball style, slotted, stainless steel, heavy end pressure, metric

Item No.	D	D1	L	H	N	Spring force initial pressure F1 approx. N	Spring force final pressure F2 approx. N
K0310.203	M3	1,5	7	0,4	0,4	5	7
K0310.204	M4	2,5	9	0,8	0,6	12	22
K0310.205	M5	3	12	0,9	0,8	19	30
K0310.206	M6	3,5	14	1	1	28	40
K0310.208	M8	5	16	1,5	1,2	47	73
K0310.210	M10	6	19	2	1,6	66	100
K0310.212	M12	8	22	2,5	2	66	120
K0310.216	M16	10	24	3,5	2,5	90	180
K0310.220	M20	12	30	4,5	2,5	115	240