

TABLE-TOP MODULAR CONVEYORS

Product Overview

You are currently viewing:



**Table-Top Modular
Conveyors**



**Parallel Shaft/
Flange Drives IN-PAR**



**RNG Easy Access
Dial Indexers IN-RNG**

Additional Indexing Products:



**Servo Positioner
Rotary Table IN-GTB**



Rite-Link Conveyors IN-RLC



RDM Dial Indexers IN-RDM



**Heavy Duty
Modular Conveyors IN-HDC**



RA Right Angle Drives IN-RA



LPP Linear Part Handles IN-LPP



RD HD Dial Indexers IN-RD



RPP Rotating Part Handlers .. IN-RPP



E-Series HD Drives IN-EHD



Overload Clutches IN-CLU



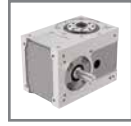
MDE/HDE Indexers IN-MDE



Custom Cams IN-CAM



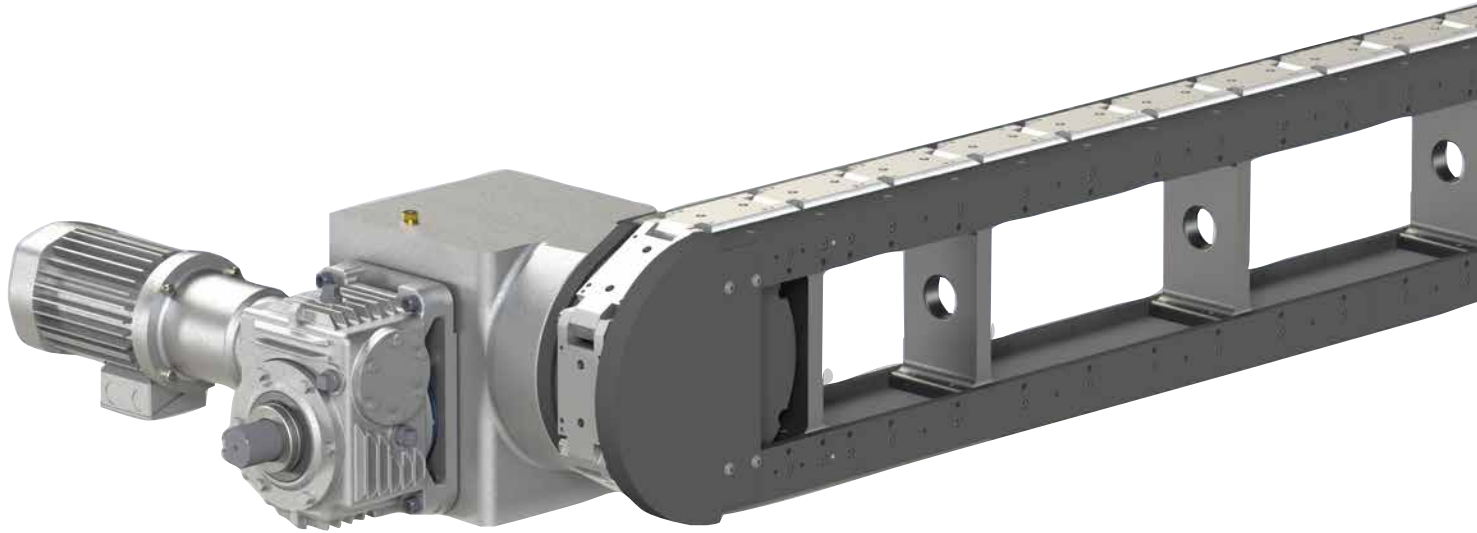
RSD Flexible Servo Drives .. IN-RSD



**RGS/RGD
Shaft/Flange Drives IN-RGS**

TABLE-TOP MODULAR CONVEYORS

Features | How To Order



Features:

CAMCO Modular Table Top Precision Link Conveyors are ideal for linear transfer applications with features including:

Modular frame design in fixed increment lengths facilitates quick assembly and delivery.

Table-Top or Base mounted

Available in carousel or over-under style

Precision positioning of parts for assembly or manufacturing processes

High-speed station-to-station parts transfer

Precision links with roller bearing cam followers for smooth transfer and long life.

Link sizes (3-inch, 4.5-inch, 6-inch) to meet most application requirements

Open frame design for pass-through of belting, linkages, electric and air supply components.

Optional bases, line shafts & tooling plates

Complete with motorized index drive system including overload protection.

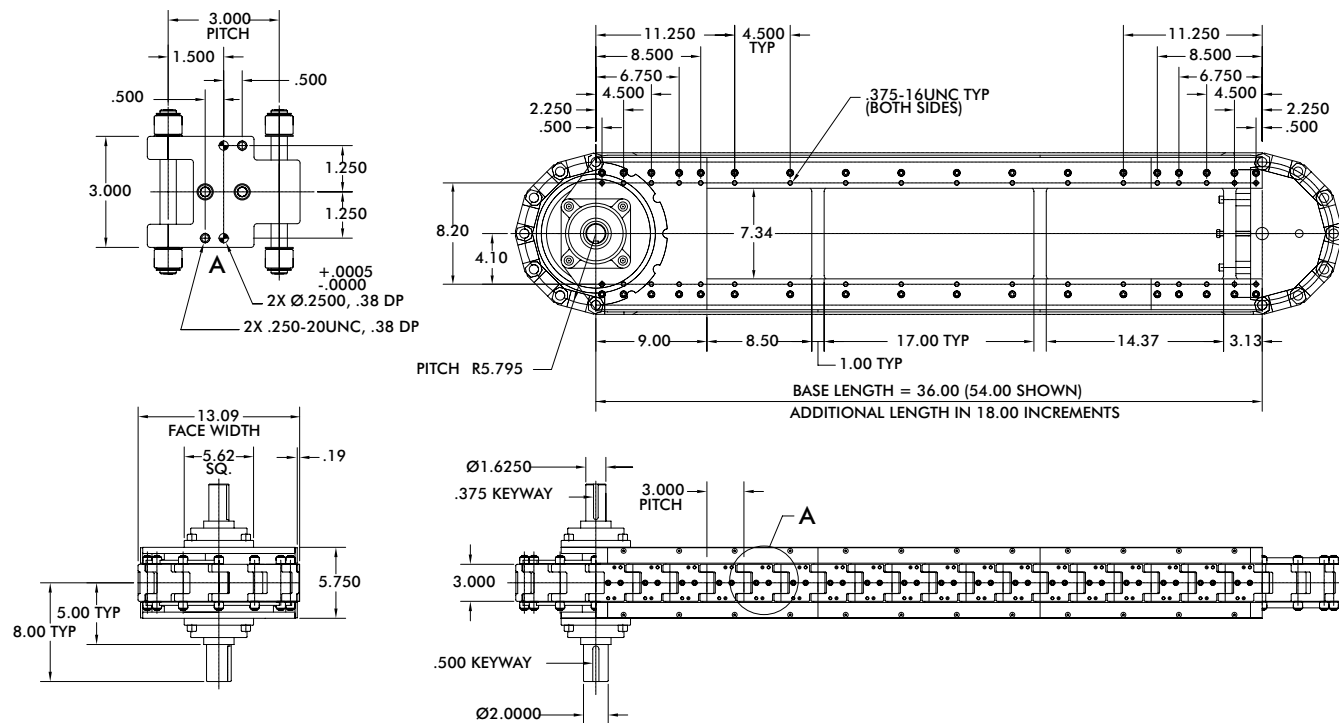
Table of Contents

3.0 Inch	3
4.5 Inch	5
6.0 Inch	7
Conveyor Options	9

3.0 INCH SERIES

Table-Top Modular Conveyors | Dimensions and Configurations

Modular Conveyor (module only)



Modular Conveyor (drive package)

Standard Drive Package

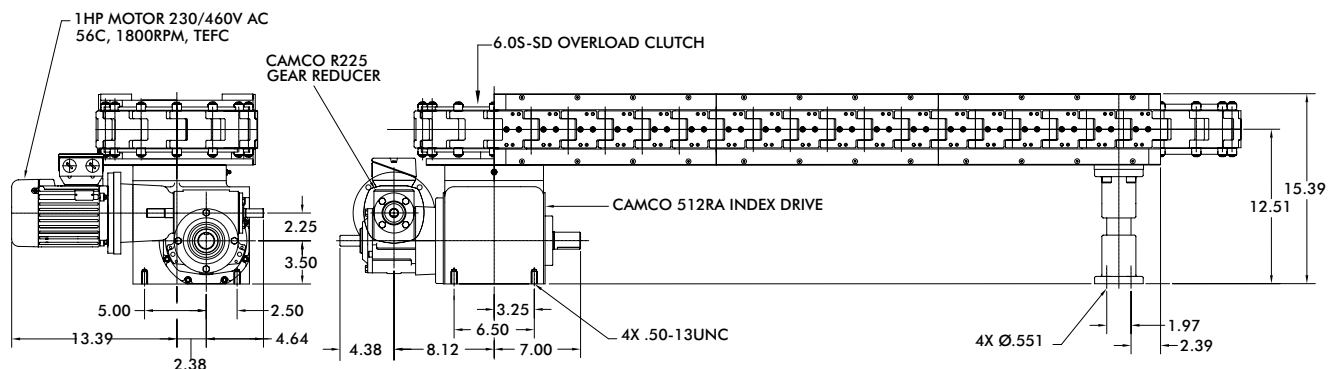
- 512RA Index Drive
- R225 Gear Reducer
- 6.0FC-SD Overload Clutch (Shaft Drive)
- 6.0S-SD Overload Clutch (Direct Drive)
- 1 hp high-cycling, performance AC Motor
- IM-pAC Motor Control

Heavy-Duty Drive Package

- 662RA Index Drive
- 7300C Gear Reducer
- 11FC-SD Overload Clutch (Shaft Drive)
- 6.0-SD Overload Clutch (Direct Drive)
- 1 hp high-cycling, performance AC Motor
- IM-pAC Motor Control

Index Distance [in.]	Indexer Stops
3.00	12
6.00	6
9.00	4
12.00	3

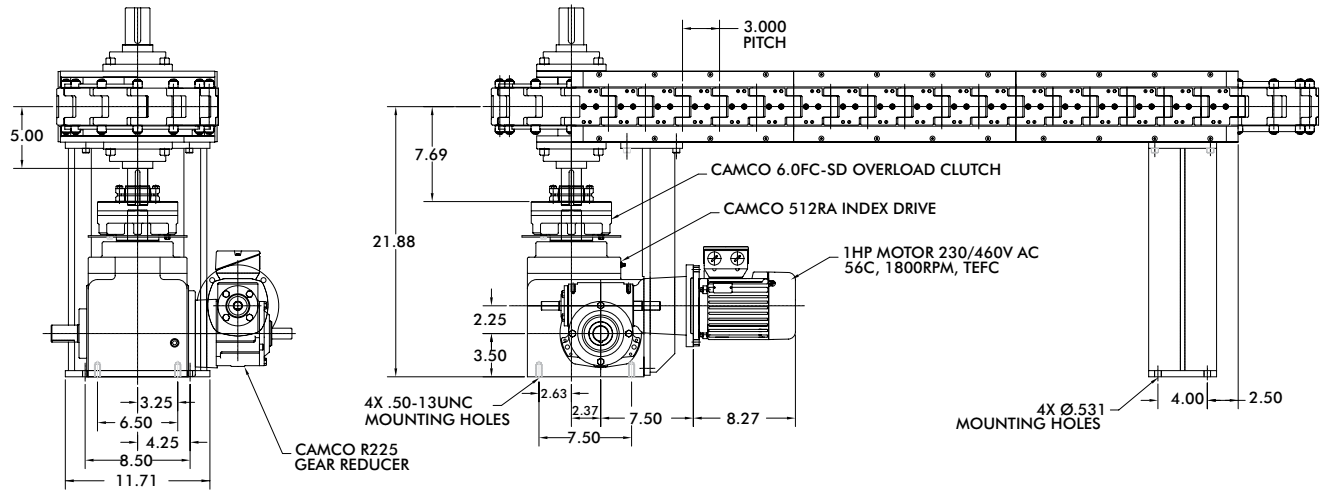
Direct Drive Carousel



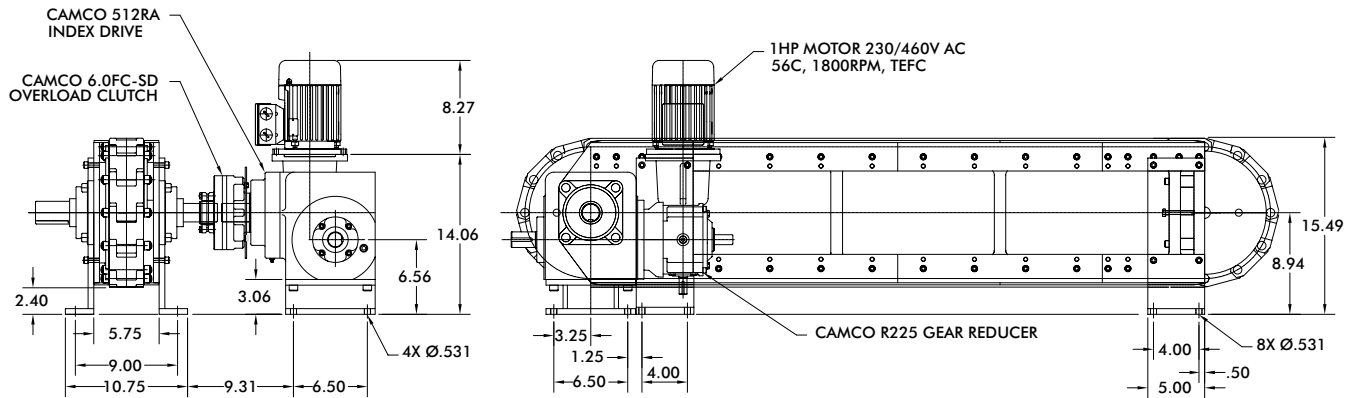
3.0 INCH SERIES

Table-Top Modular Conveyors | Configurations

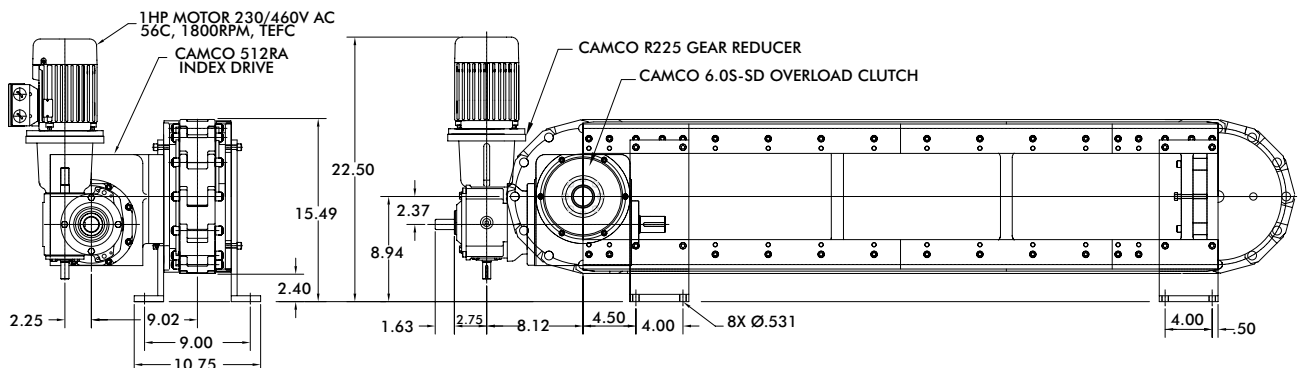
Shaft Drive Carousel



Shaft Drive Over/Under



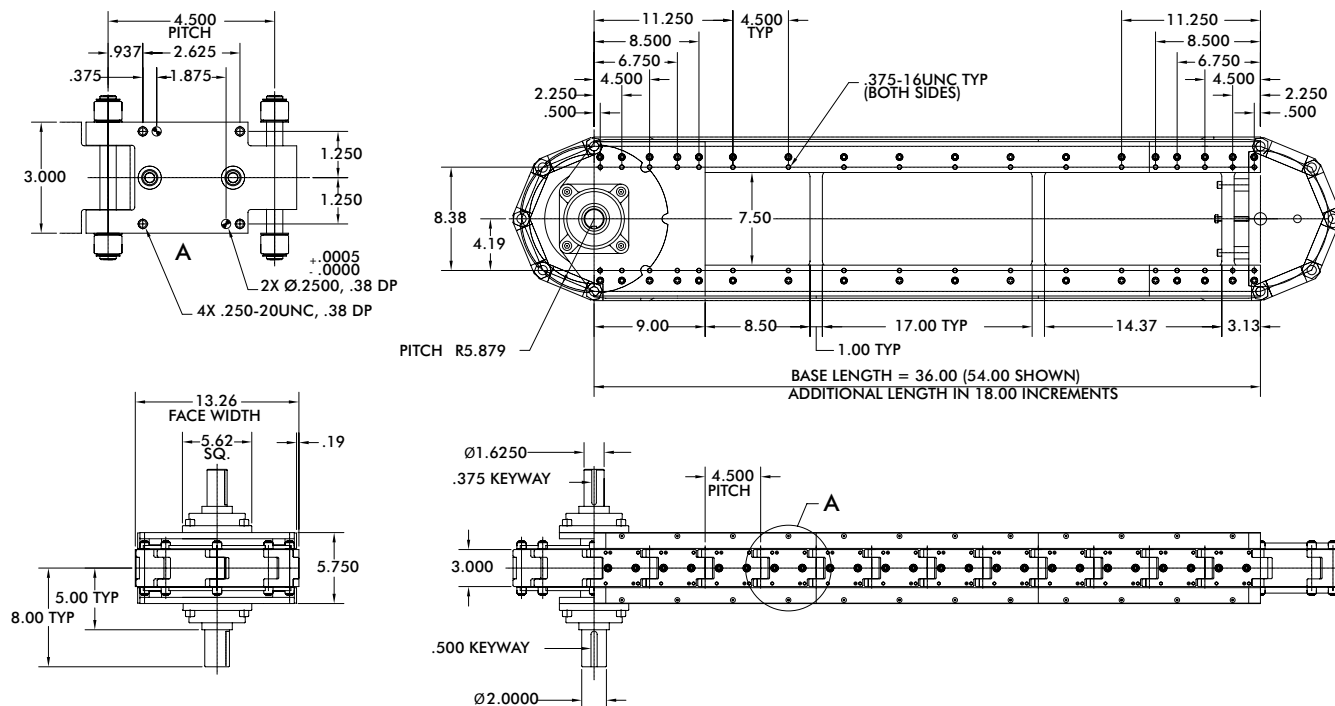
Direct Drive Over/Under



4.5 INCH SERIES

Table-Top Modular Conveyors | Dimensions and Configurations

Modular Conveyor (module only)



Modular Conveyor (drive package)

Standard Drive Package

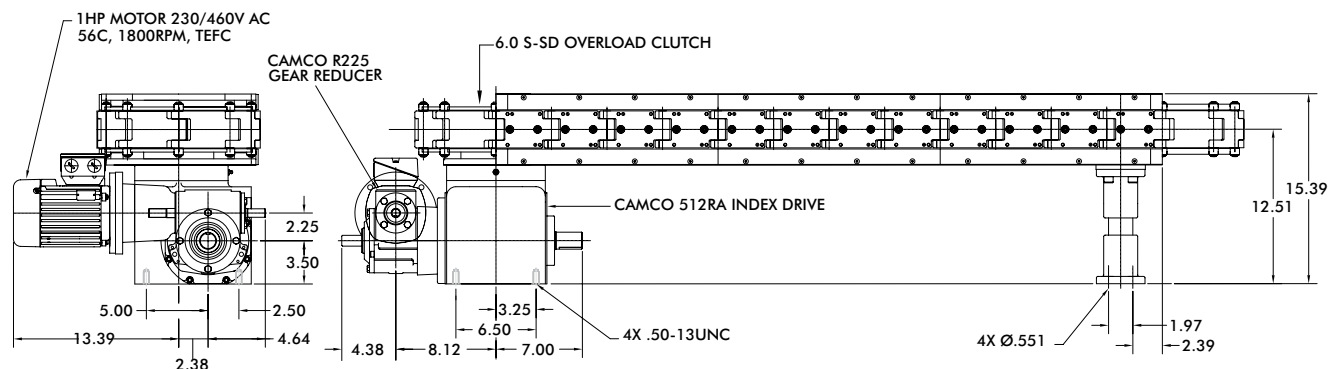
- 512RA Index Drive
- R225 Gear Reducer
- 6.0FC-SD Overload Clutch (Shaft Drive)
- 6.0S-SD Overload Clutch (Direct Drive)
- 1 hp high-cycling, performance AC Motor
- IM-pAC Motor Control

Heavy-Duty Drive Package

- 662RA Index Drive
- 7300C Gear Reducer
- 11FC-SD Overload Clutch (Shaft Drive)
- 6.0-SD Overload Clutch (Direct Drive)
- 1 hp high-cycling, performance AC Motor
- IM-pAC Motor Control

Index Distance [in.]	Indexer Stops
4.50	8
9.00	4
18.00	2

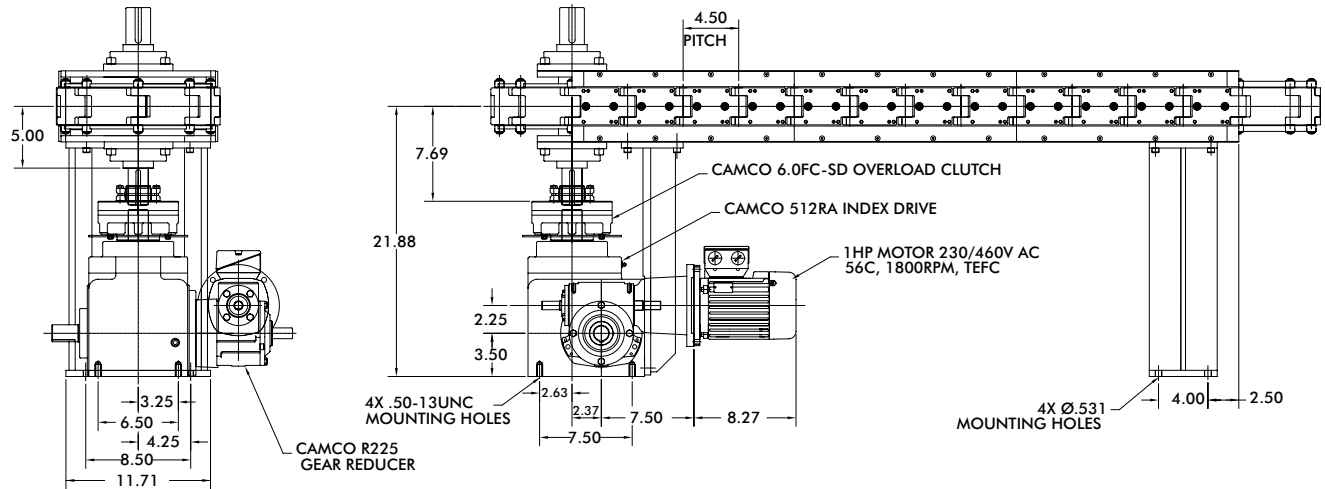
Direct Drive Carousel



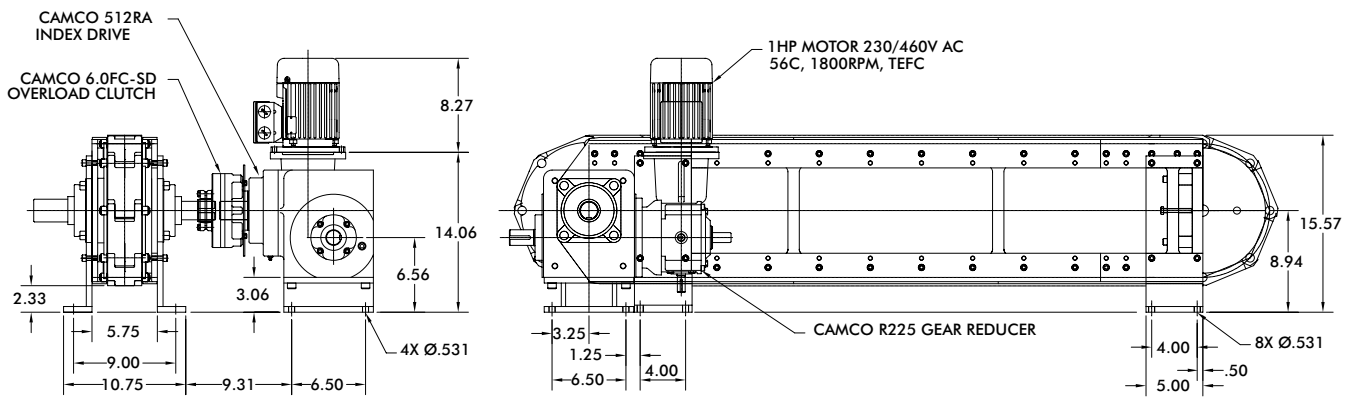
4.5 INCH SERIES

Table-Top Modular Conveyors | Configurations

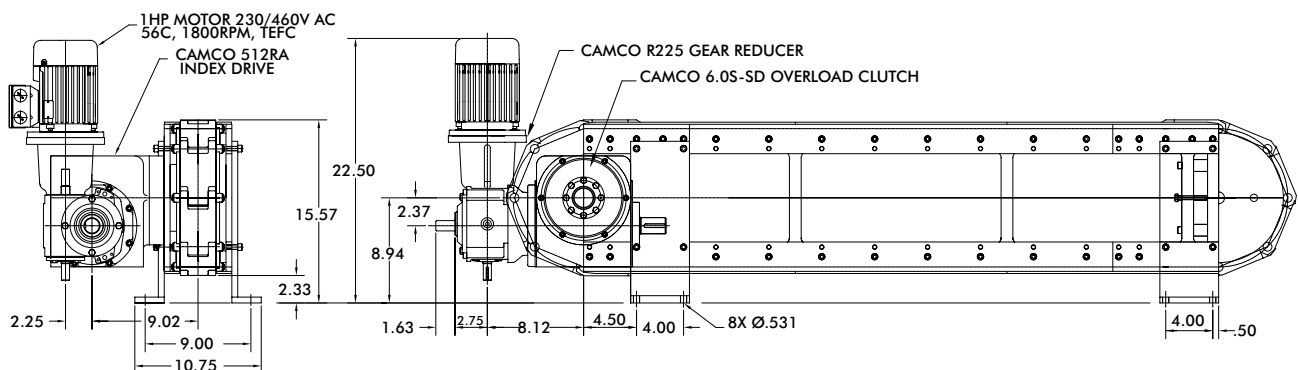
Shaft Drive Carousel



Shaft Drive Over/Under



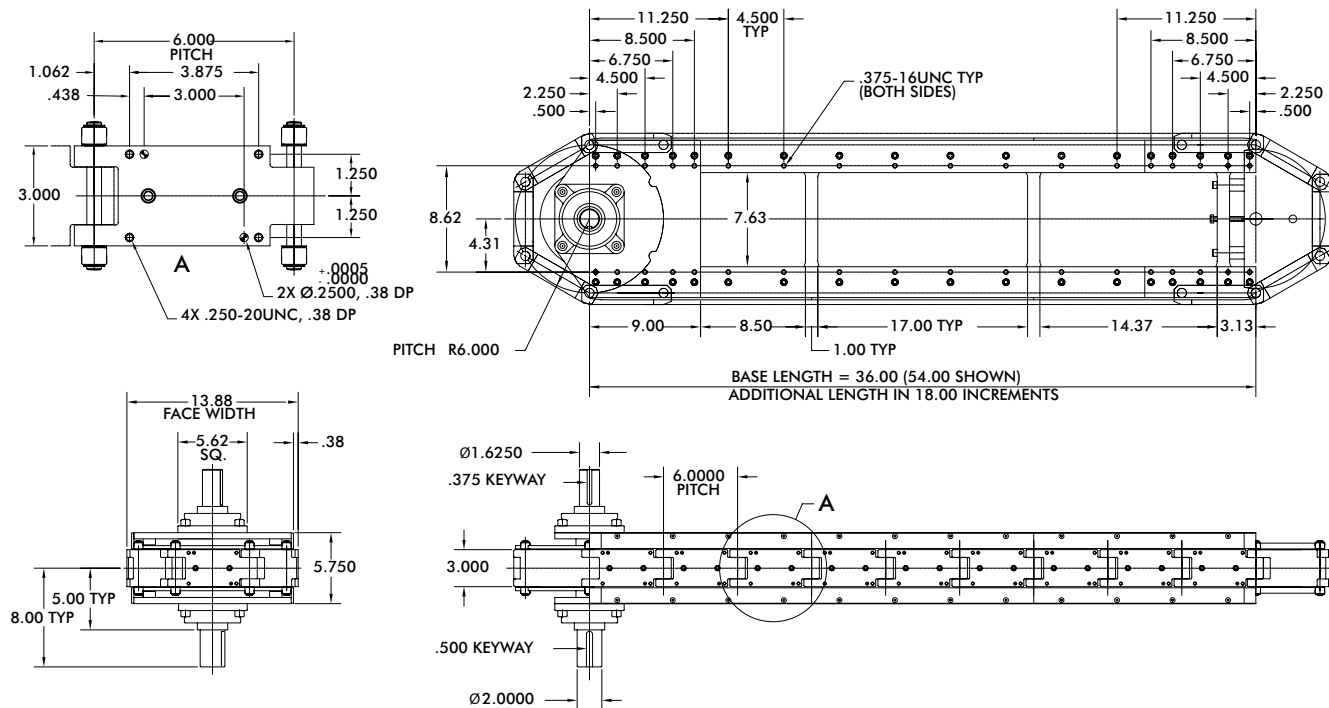
Direct Drive Over/Under



6.0 INCH SERIES

Table-Top Modular Conveyors | Dimensions and Configurations

Modular Conveyor (module only)



Modular Conveyor (drive package)

Standard Drive Package

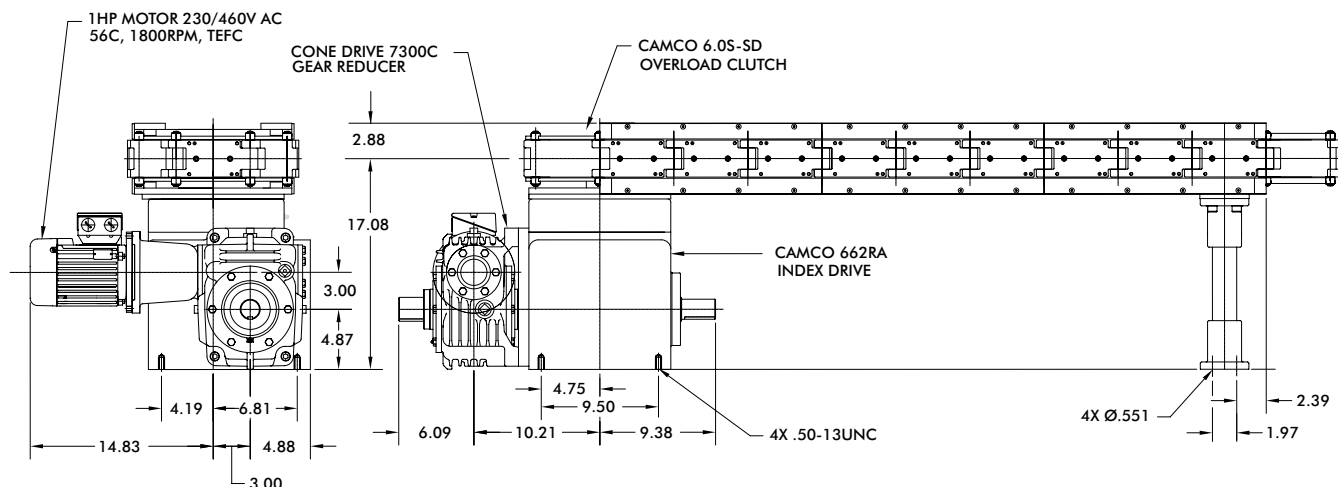
- 662RA Index Drive
- 7300C Gear Reducer
- 11FC-SD Overload Clutch (Shaft Drive)
- 6.0S-SD Overload Clutch (Direct Drive)
- 1 hp high-cycling, performance AC Motor
- IM-pAC Motor Control

Heavy-Duty Drive Package

- 800RD Index Drive
- 7300C Gear Reducer
- 25FC-SD Overload Clutch
- 1 hp high-cycling, performance AC Motor
- IM-pAC Motor Control

Index Distance [in.]	Indexer Stops
6.00	6
12.00	3
18.00	2

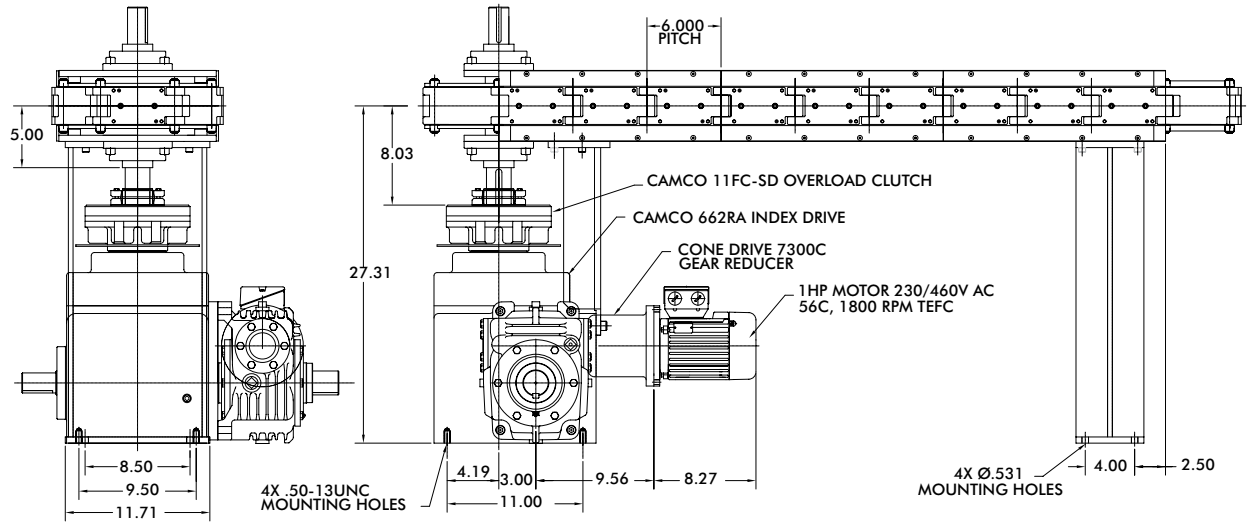
Direct Drive Carousel



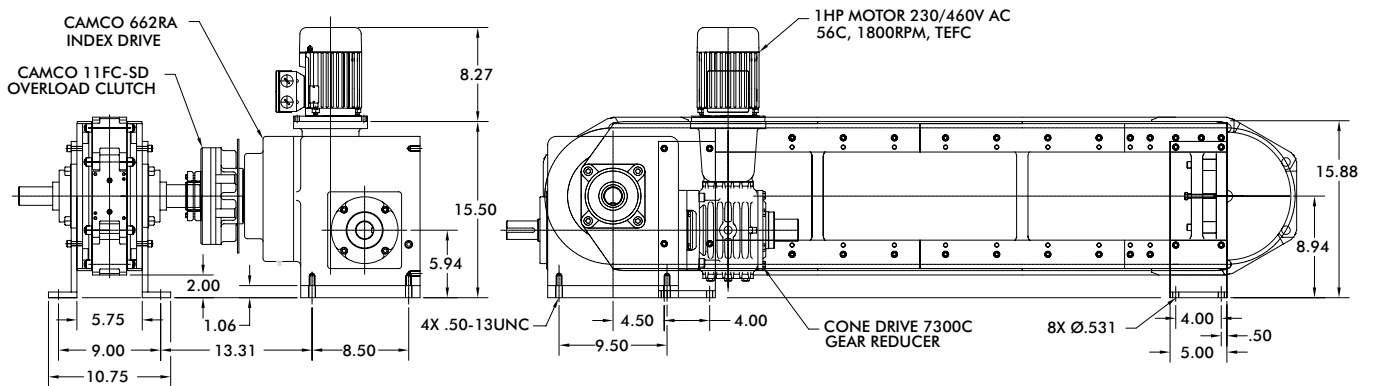
6.0 INCH SERIES

Table-Top Modular Conveyors | Configurations

Shaft Drive Carousel



Shaft Drive Over/Under



Direct Drive Over/Under

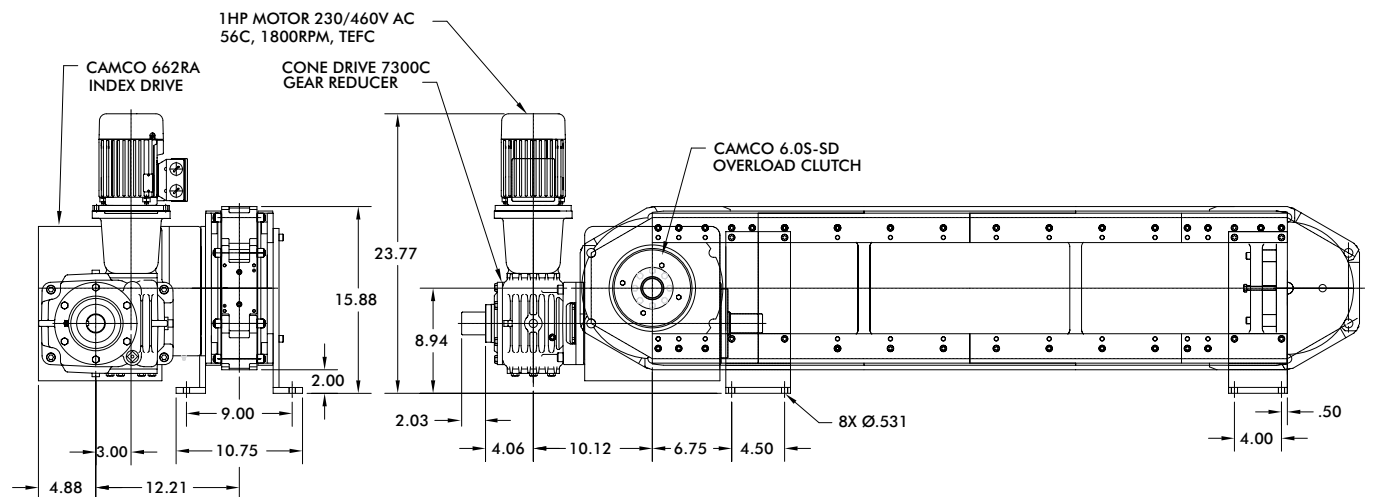
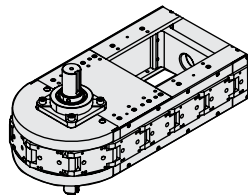
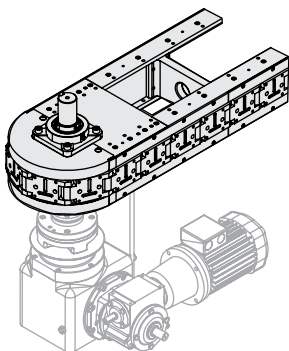


TABLE-TOP MODULAR CONVEYORS

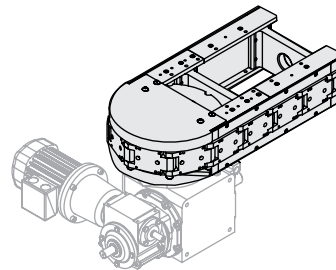
Conveyor Types



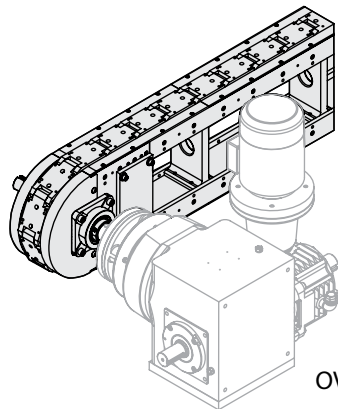
MODULE ONLY



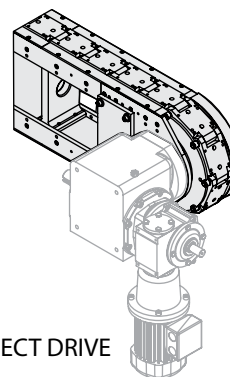
CAROUSEL-SHAFT DRIVEN



CAROUSEL-DIRECT DRIVEN

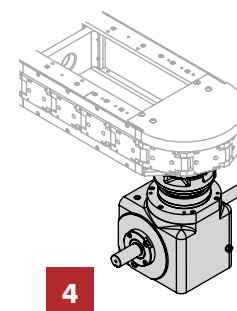
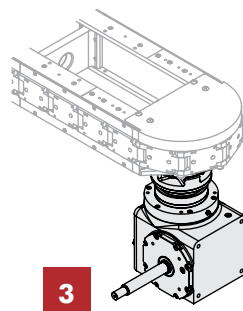
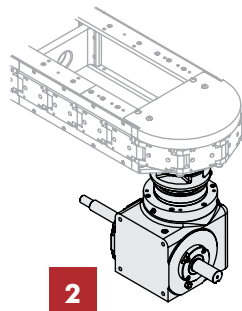
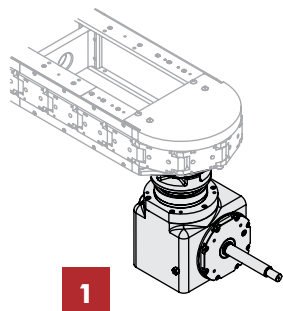


OVER-UNDER SHAFT DRIVEN

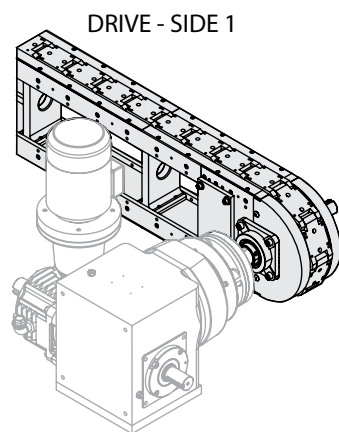


OVER-UNDER DIRECT DRIVE

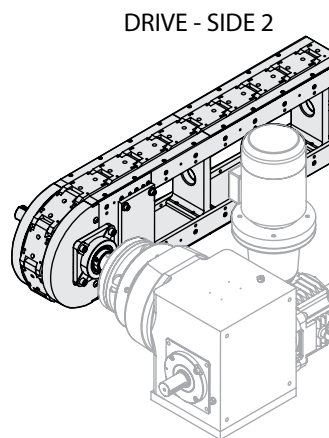
Carousel Indexer Position



Over/Under Side



DRIVE - SIDE 1

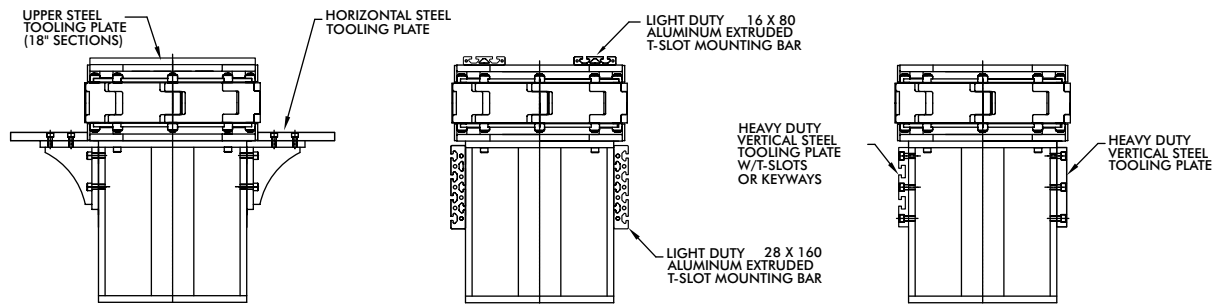


DRIVE - SIDE 2

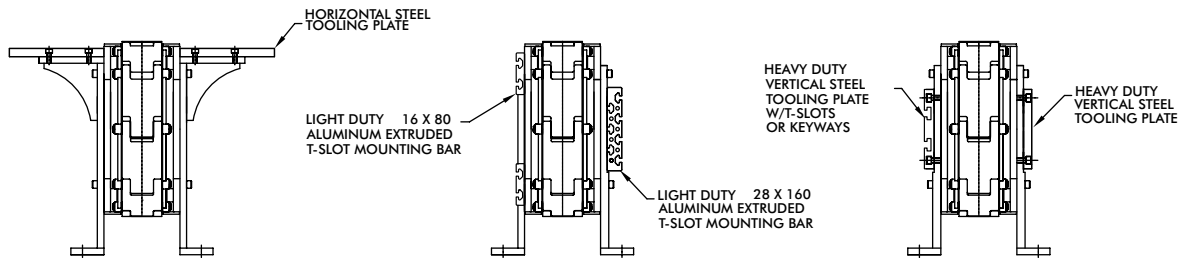
TABLE-TOP MODULAR CONVEYORS

Options

Tooling Plate Options Carousel



Tooling Plate Options Over/Under



Support Leg Options

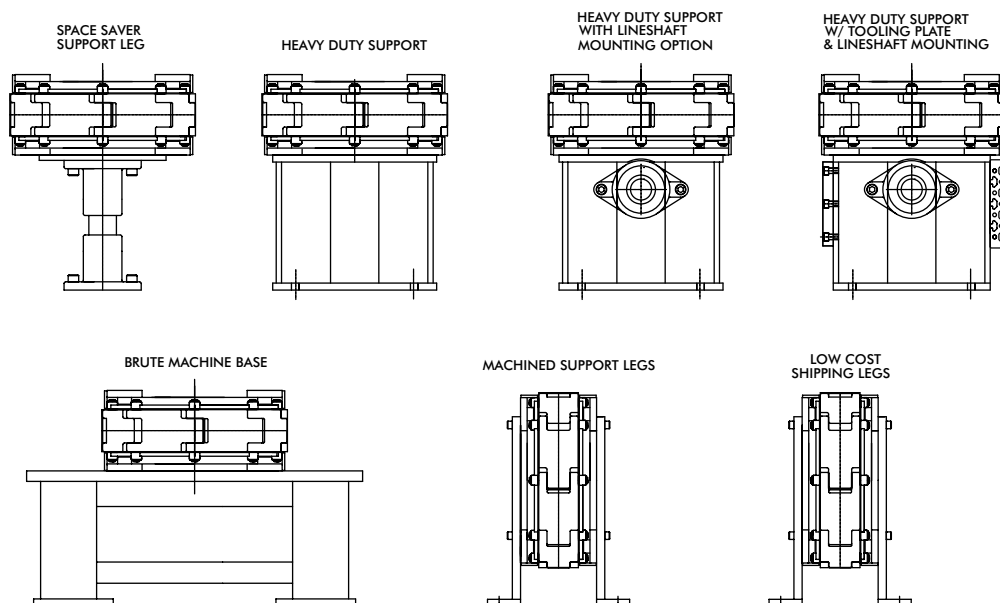
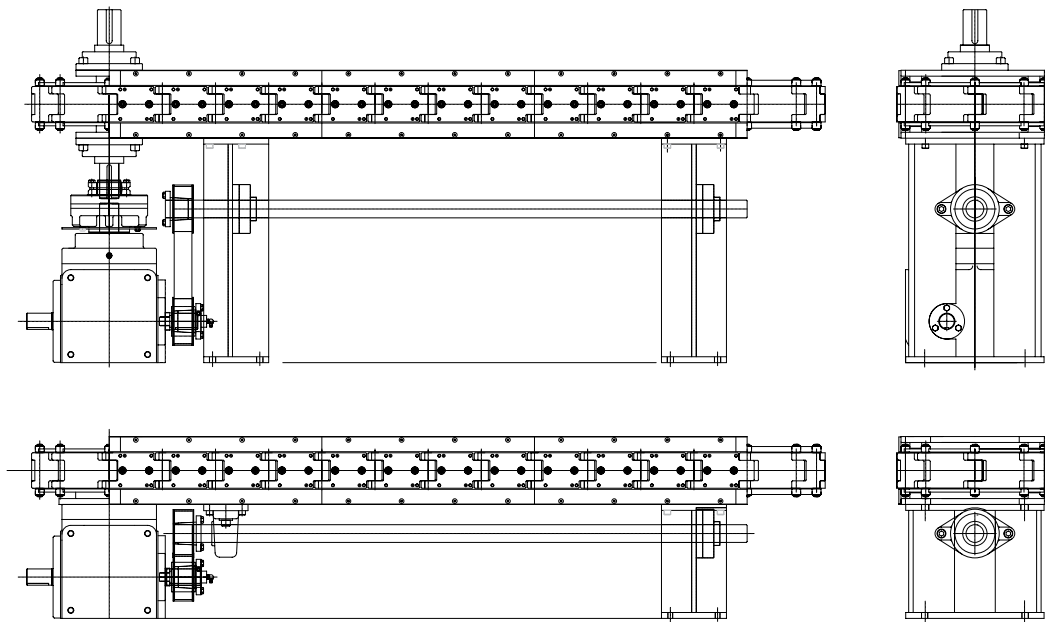


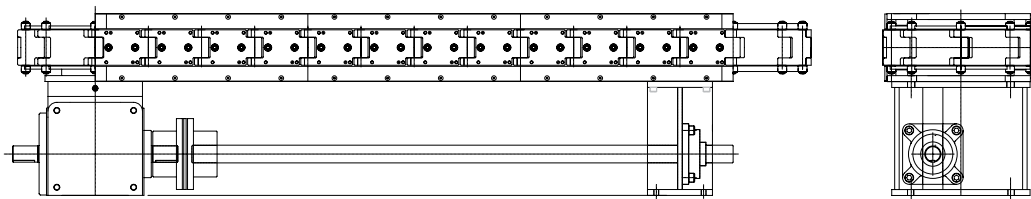
TABLE-TOP MODULAR CONVEYORS

Options

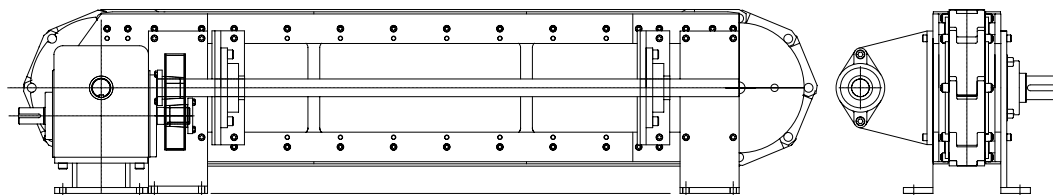
Lower Lineshaft Options Belt Driven



Lower Lineshaft Options Direct Driven



Drive Side Lineshaft Options Belt Driven



Drive Side Lineshaft Options Direct Driven

