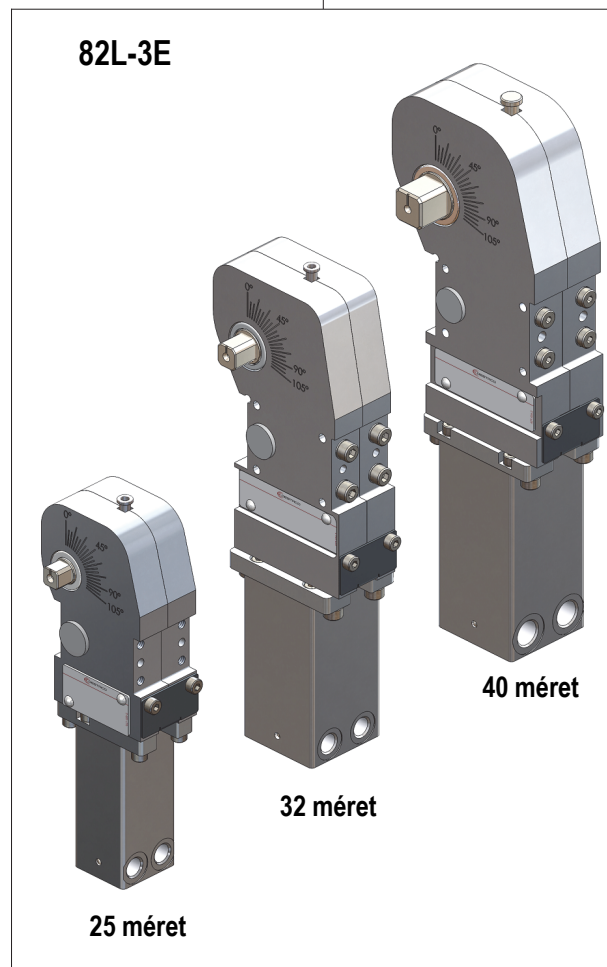
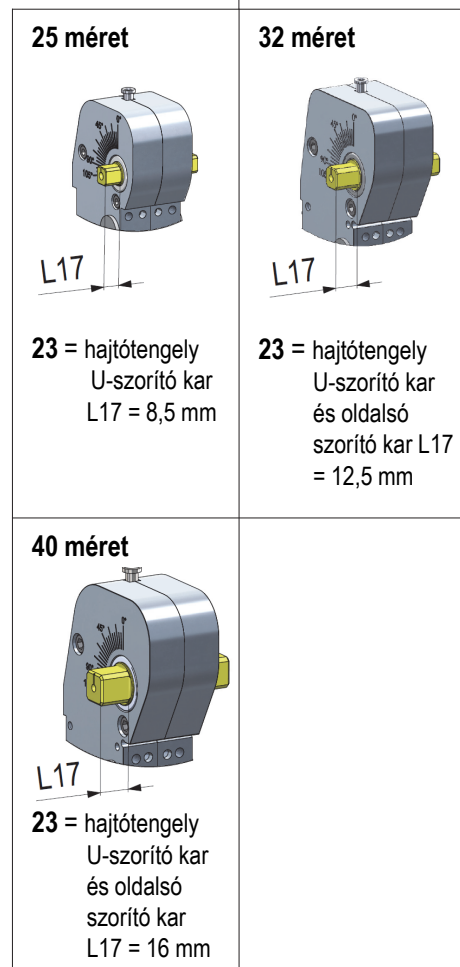


Rendelési útmutató Példa: 82L-3E 23 00 40 C8



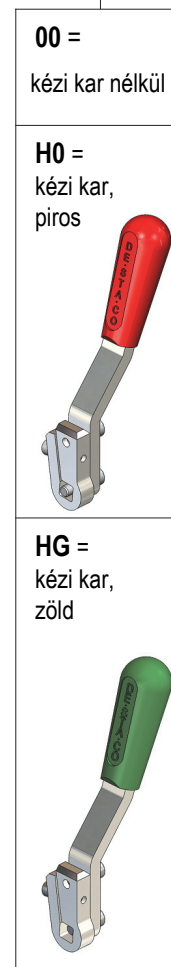
Alapmodell

A méreteket lásd az adatlapon



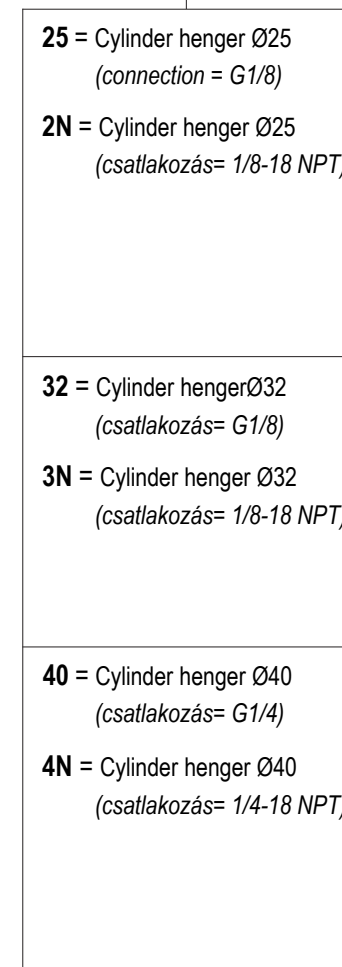
Kardántengely

A méreteket lásd az adatlapon



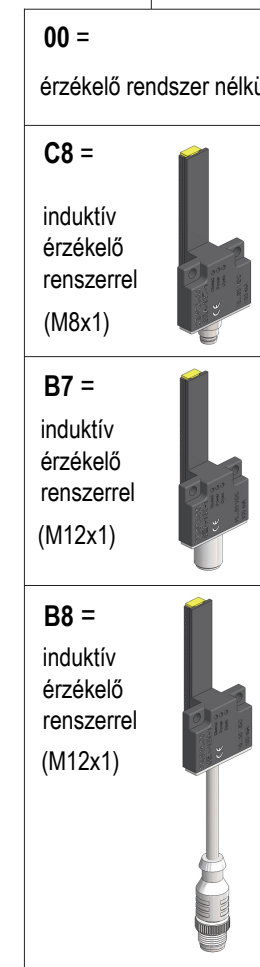
Kézi karral

A méreteket lásd az adatlapon



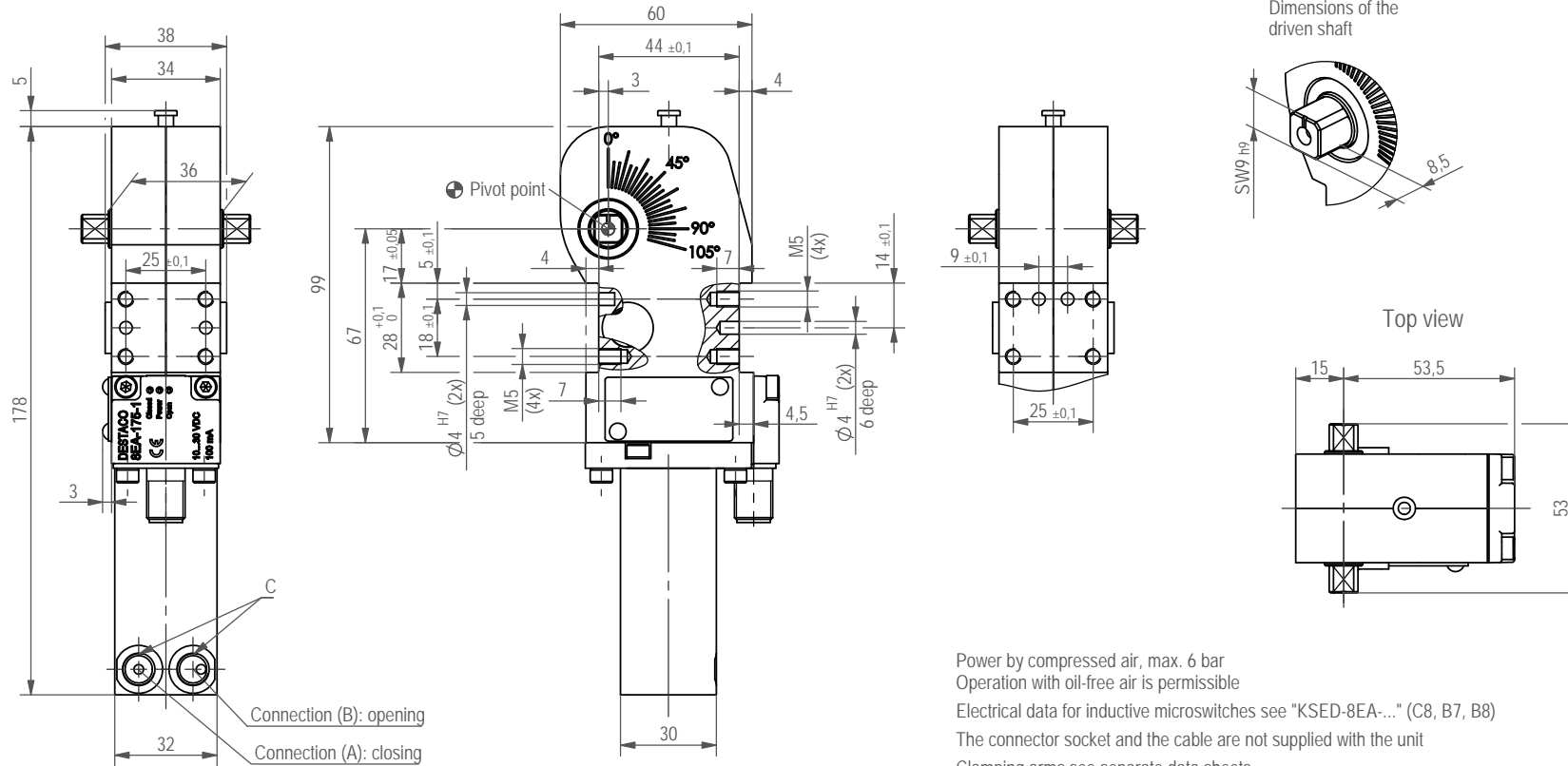
Cylinder henger

A méreteket lásd az adatlapon



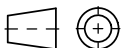
Sensing system

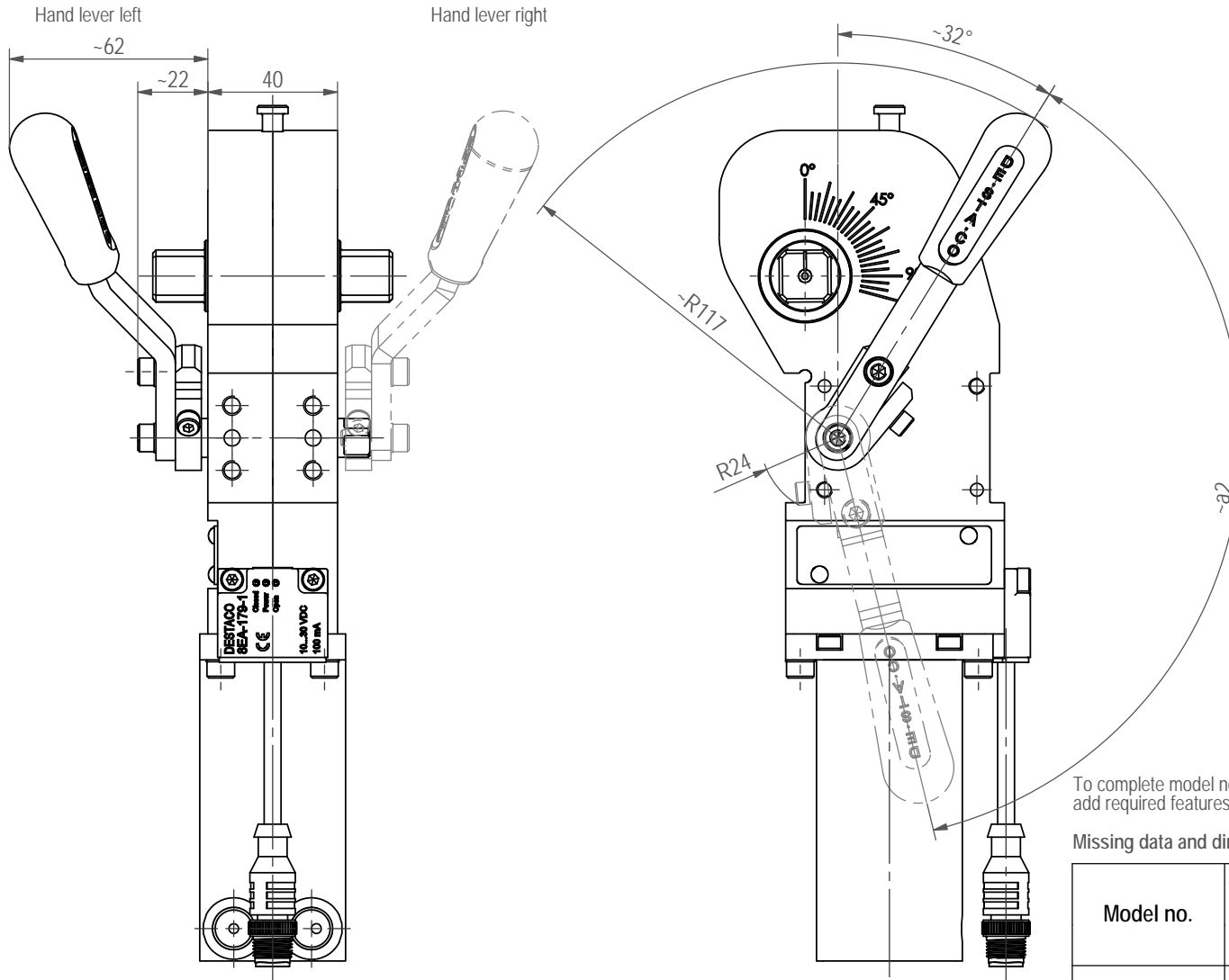
Dimensions see data sheet



Power by compressed air, max. 6 bar  
 Operation with oil-free air is permissible  
 Electrical data for inductive microswitches see "KSED-8EA..." (C8, B7, B8)  
 The connector socket and the cable are not supplied with the unit  
 Clamping arms see separate data sheets  
 To complete the model number see model no. code

Model no.	Connection C	Holding torque max. [Nm]	Clamping torque at 5 bar [Nm]	Piston Ø [mm]	Weight ~ [kg]	Air consumption per double stroke 5 at bar [Liter]
82L-3E230025..	G1/8	75	25	25	0,6	0,4
82L-3E23002N..	1/8-18 NPT					





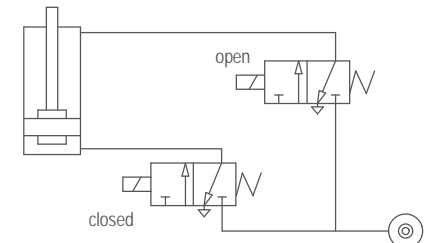
**Attention !**

The pneumatic control should ensure, that the operators cannot reach into the moving hand lever, when the power clamp is actuated by air pressure.

Clamp is not locked in open position, hand lever can slam.

**Notice !**

Easy custom left hand or right hand mounting in required position.

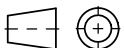


Pneumatic circuit required for manual and pneumatic actuation.

To complete model no. of power clamps series 82L-3E with hand lever, add required features into the blanks " \_ " according to model no. code "NC82L-3E\_GB".

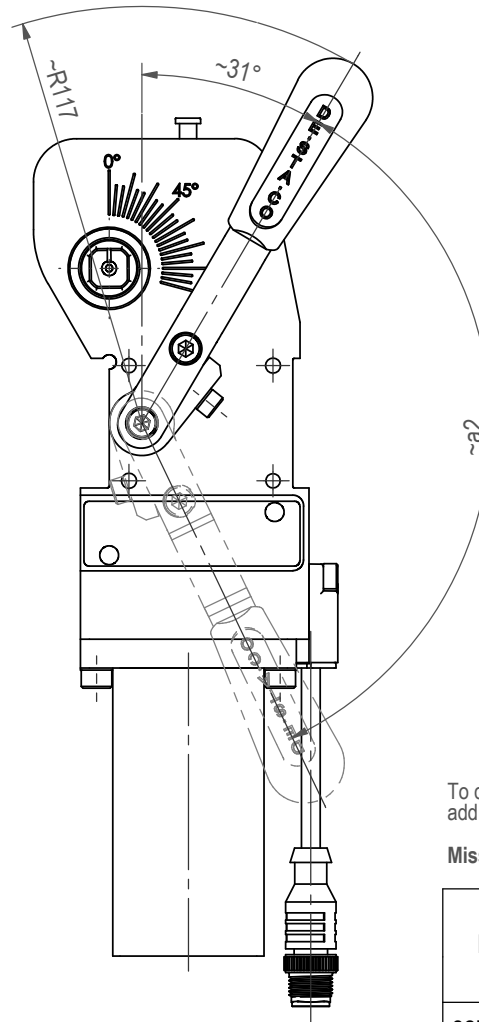
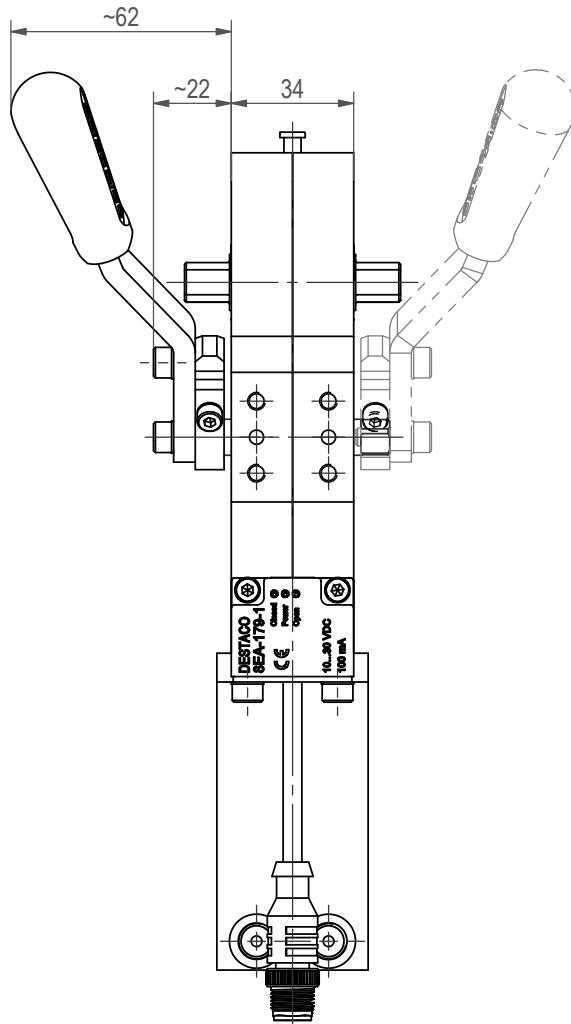
Missing data and dimensions see separate data sheet

Model no.	Weight ~ [kg]	Swivel angle ~a2 (with reference to opening angle of clamping arm)							
		0°	15°	30°	45°	60°	75°	90°	105°
82L-3E23H.40..	1,8	32°	47°	60°	71°	83°	97°	114°	135°



Hand lever left

Hand lever right



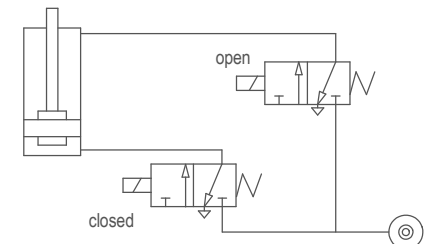
**Attention !**

The pneumatic control should ensure, that the operators cannot reach into the moving hand lever, when the power clamp is actuated by air pressure.

Clamp is not locked in open position, hand lever can slam.

**Notice !**

Easy custom left hand or right hand mounting in required position.

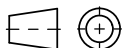


Pneumatic circuit required for manual and pneumatic actuation.

To complete model no. of power clamps series 82L-3E with hand lever, add required features into the blanks "\_" according to model no. code "NC82L-3E\_GB".

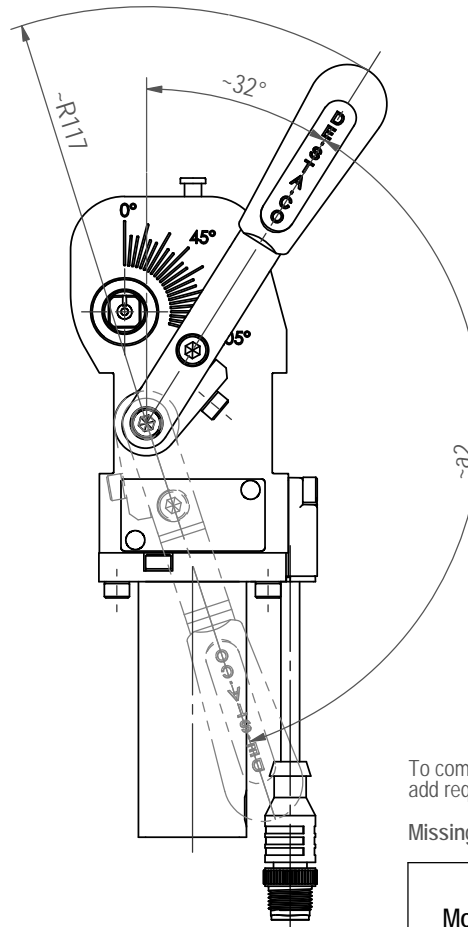
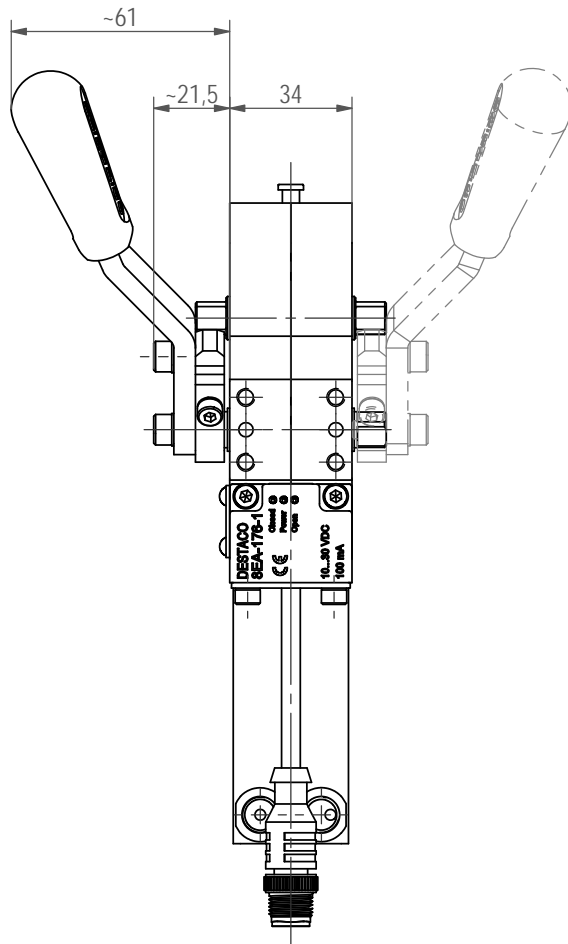
Missing data and dimensions see separate data sheet

Model no.	Weight ~ [kg]	Swivel angle ~a2 (with reference to opening angle of clamping arm)							
		0°	15°	30°	45°	60°	75°	90°	105°
82L-3E23H.32..	1,3	31°	39°	52°	62°	74°	87°	103°	124°



Hand lever left

Hand lever right



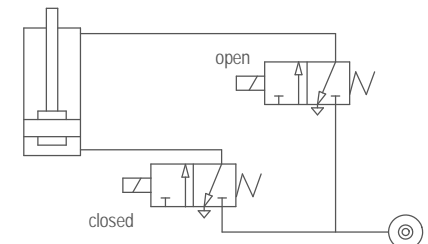
### Attention !

The pneumatic control should ensure, that the operators cannot reach into the moving hand lever, when the power clamp is actuated by air pressure.

Clamp is not locked in open position, hand lever can slam.

### Notice !

Easy custom left hand or right hand mounting in required position.

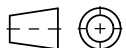


Pneumatic circuit required for manual and pneumatic actuation.

To complete model no. of power clamps series 82L-3E with hand lever, add required features into the blanks " \_ " according to model no. code "NC82L-3E\_GB".

Missing data and dimensions see separate data sheet

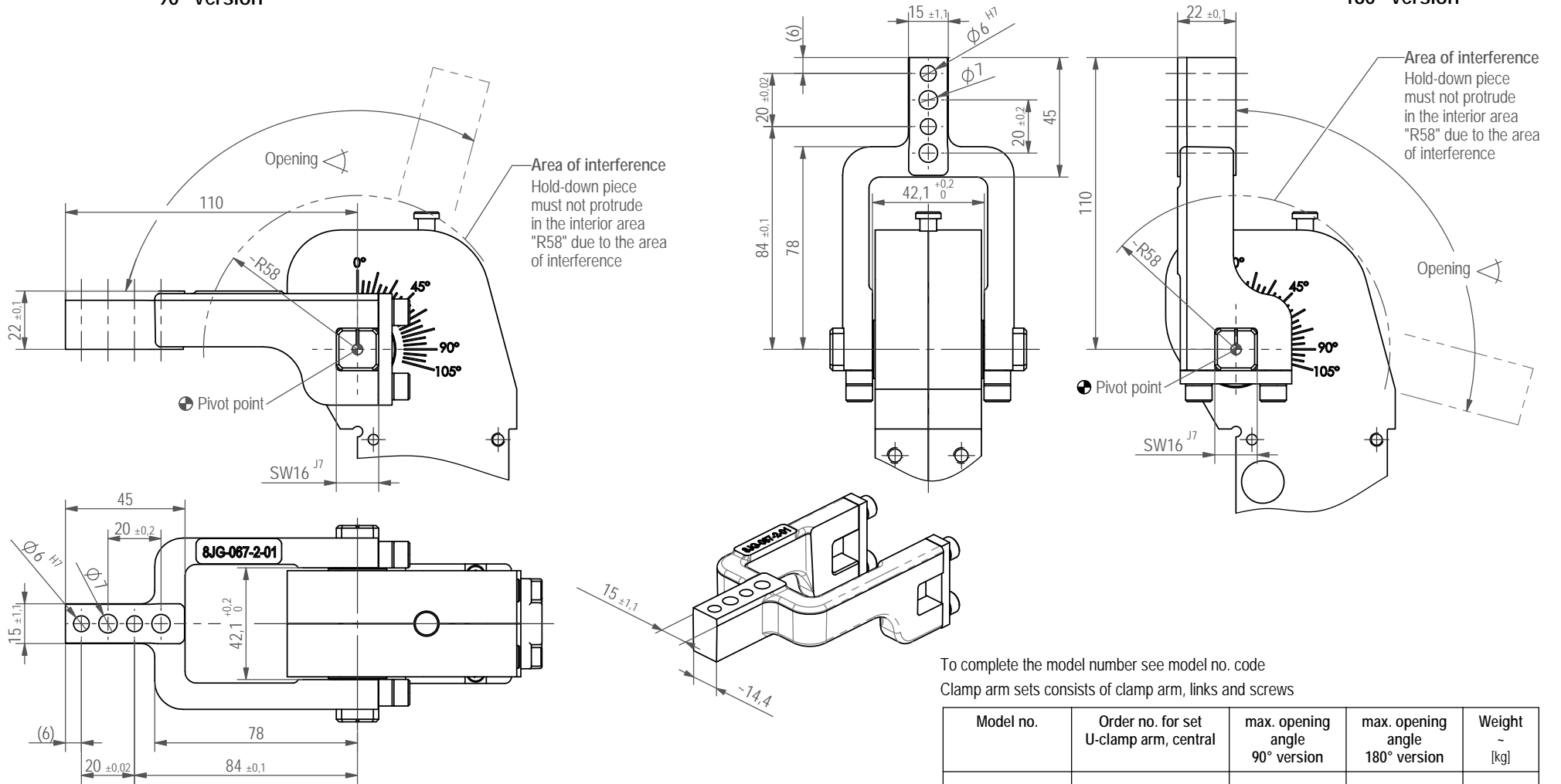
Model no.	Weight ~ [kg]	Swivel angle -a2 (with reference to opening angle of clamping arm)							
		0°	15°	30°	45°	60°	75°	90°	105°
82L-3E23H.25..	0,8	32°	39°	52°	64°	76°	90°	109°	130°



## U-Clamp arm, central (steel)

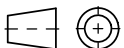
90° version

180° version



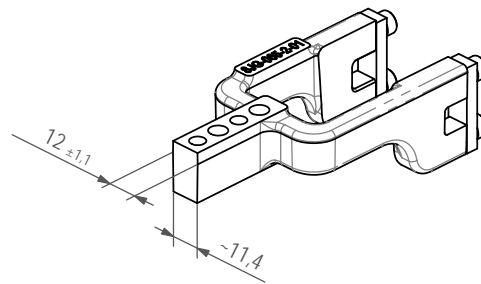
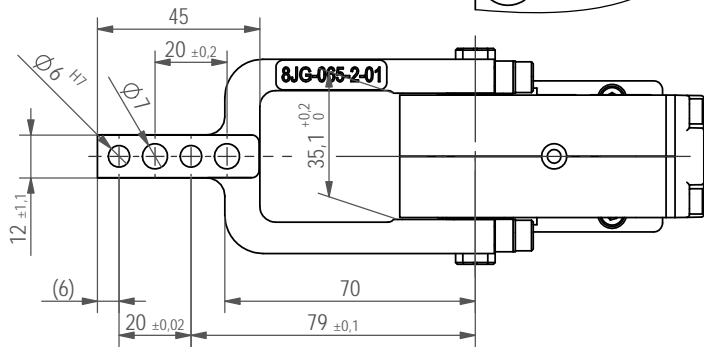
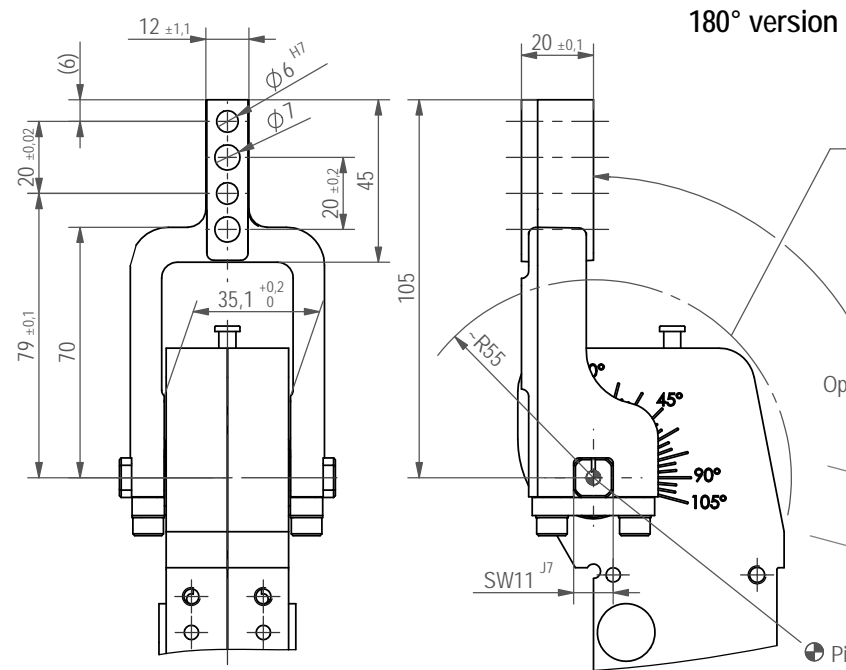
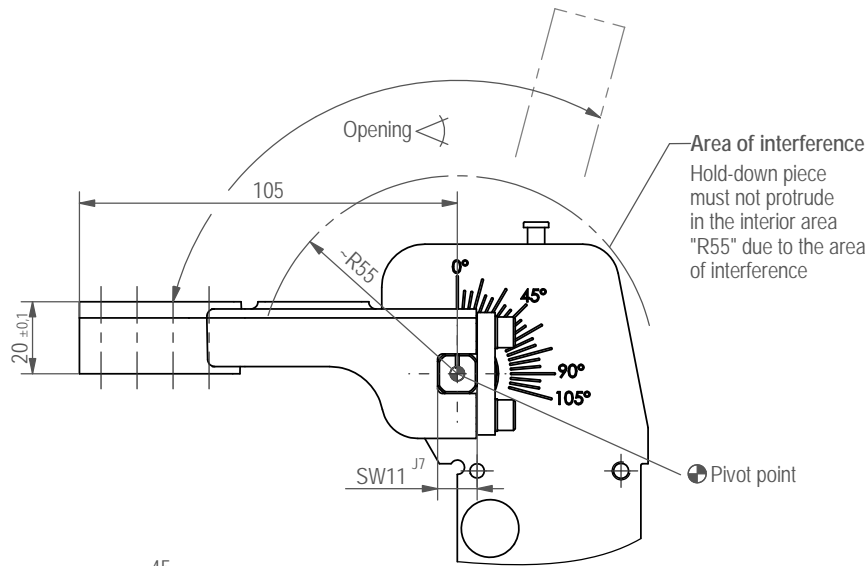
To complete the model number see model no. code  
Clamp arm sets consists of clamp arm, links and screws

Model no.	Order no. for set U-clamp arm, central	max. opening angle 90° version	max. opening angle 180° version	Weight ~ [kg]
82L-3E23..40..	8JG-067-2-01	105°	105°	0,5



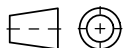
U-Clamp arm, central (steel)

90° version



To complete the model number see model no. code  
Clamp arm sets consists of clamp arm, links and screws

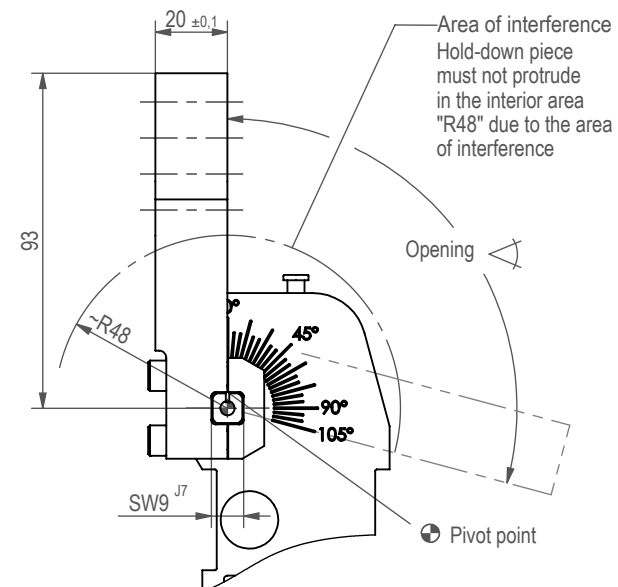
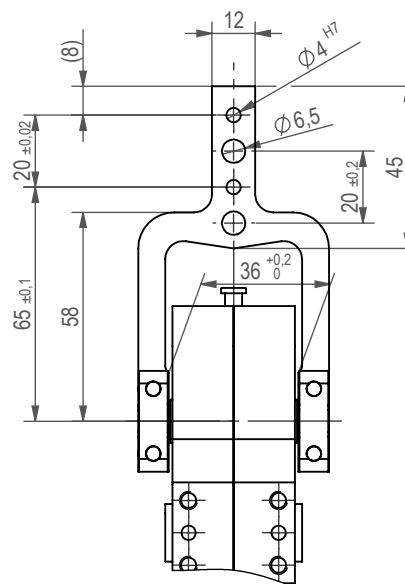
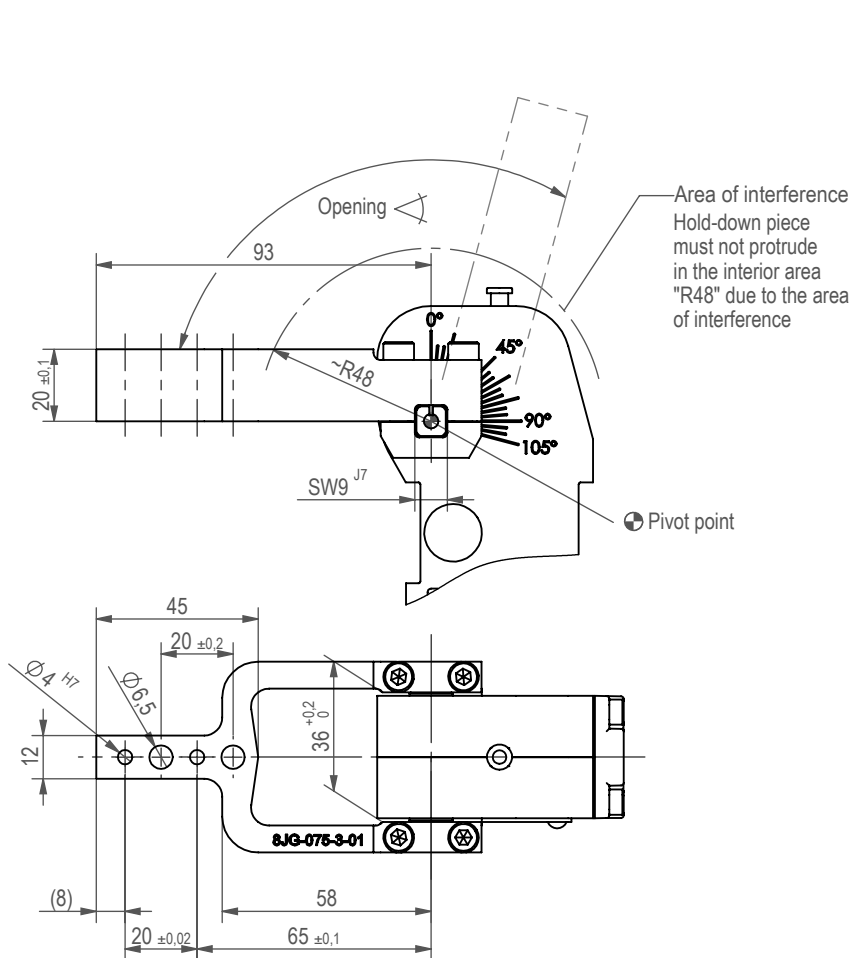
Model no.	Order no. for set U-clamp arm, central	max. opening angle 90° version	max. opening angle 180° version	Weight ~ [kg]
82L-3E23..32..	8JG-065-2-01	105°	105°	0,37



U-Clamp arm, central (steel)

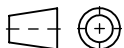
90° version

180° version

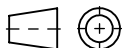
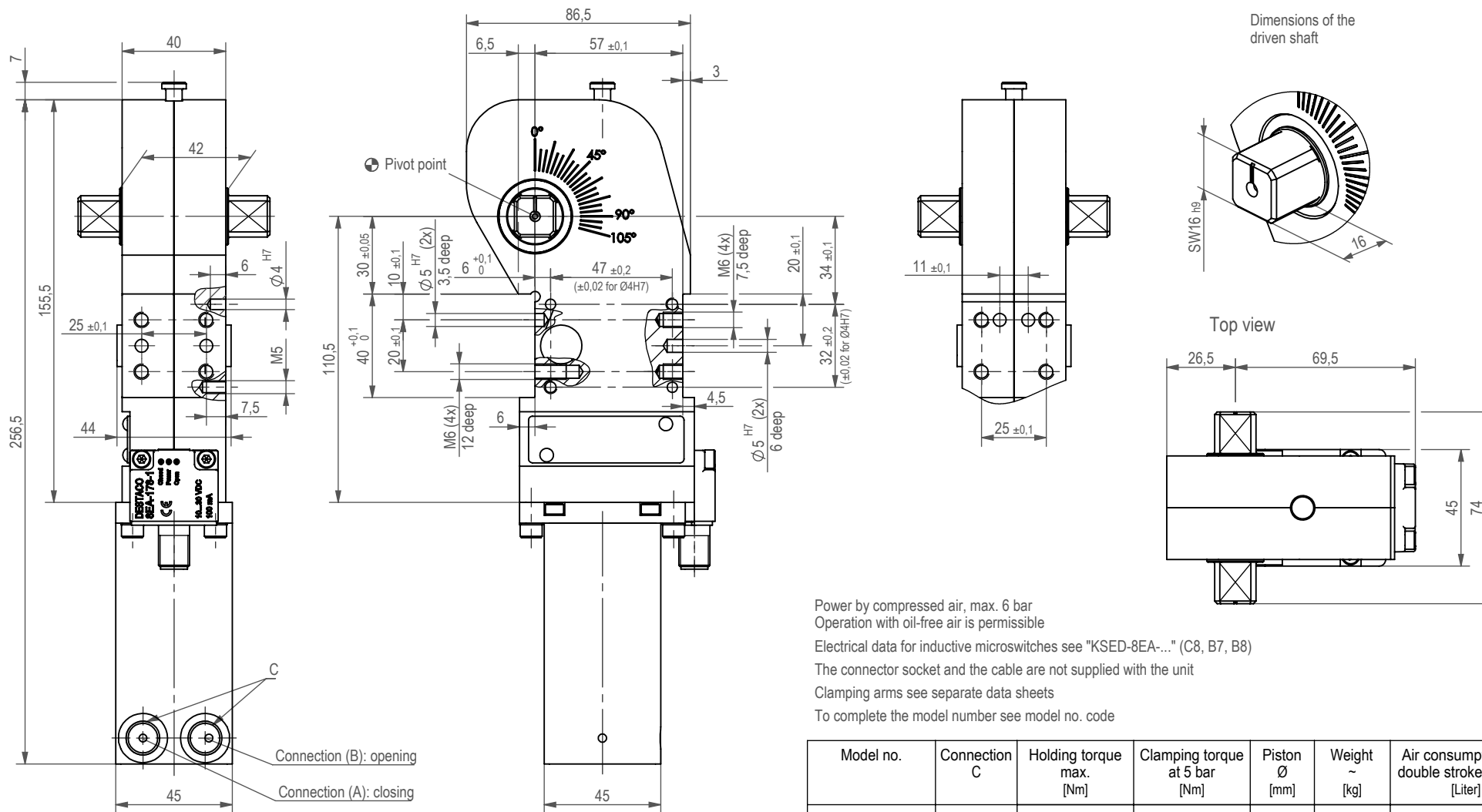


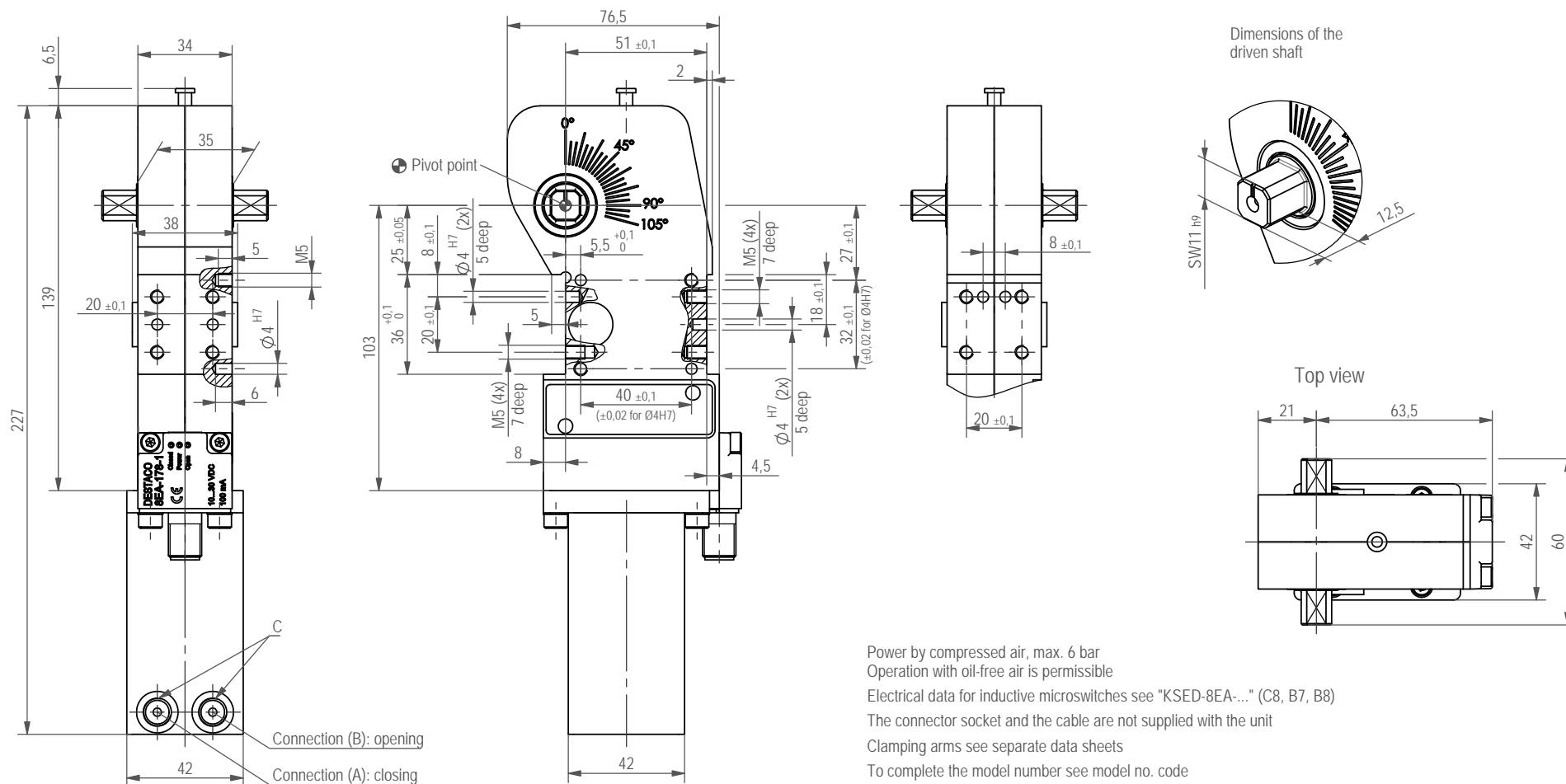
To complete the model number see model no. code  
Clamp arm sets consists of clamp arm, links and screws

Model no.	Order no. for set U-clamp arm, central	max. opening angle 90° version	max. opening angle 180° version	Weight ~ [kg]
82L-3E23..25..	8JG-075-3-01	105°	105°	0,3









Power by compressed air, max. 6 bar  
 Operation with oil-free air is permissible  
 Electrical data for inductive microswitches see "KSED-8EA..." (C8, B7, B8)  
 The connector socket and the cable are not supplied with the unit  
 Clamping arms see separate data sheets  
 To complete the model number see model no. code

Model no.	Connection C	Holding torque max. [Nm]	Clamping torque at 5 bar [Nm]	Piston Ø [mm]	Weight ~ [kg]	Air consumption per double stroke at 5 bar [Liter]
82L-3E230032..	G1/8	180	55	32	1,1	0,8
82L-3E23003N..	1/8-18 NPT					

