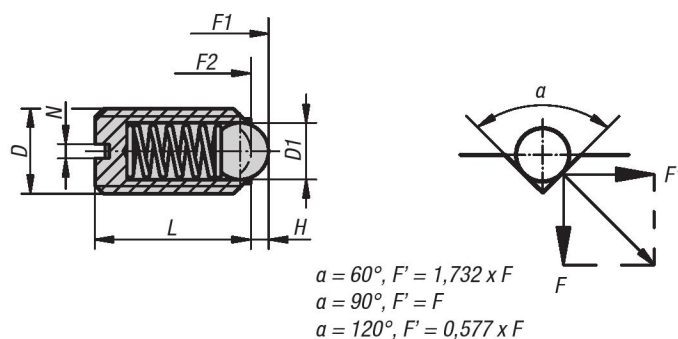




Spring Plungers

ball style, slotted, steel

INCH Parts
METRIC Parts



Material:

Body in steel quality class 5.8.
Ball steel.
Spring in spring steel class D.

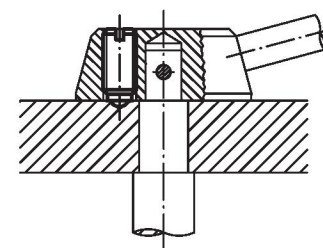
Type:

Black oxide finish.
Ball hardened.

Part Number Example:

K0309.AD

Application Diagram



KIPP Spring Plungers, ball style, slotted, steel, standard end pressure, inch

Item No.	D	D1	L	H	N	Spring force initial pressure F1 approx. N	Spring force final pressure F2 approx. N
K0309.AD	6-32	1.5	7	0.4	0.4	1.5	3
K0309.AG	8-36	2.5	9	0.8	0.6	4	10
K0309.AE	8-32	2.5	9	0.8	0.6	4	10
K0309.A1	10-32	3	12	0.9	0.8	6	11
K0309.AJ	1/4-28	3.5	14	1	1	9	13
K0309.A2	1/4-20	3.5	14	1	1	9	13
K0309.A3	5/16-18	5	16	1.5	1.2	15	30
K0309.A4	3/8-16	6	19	2	1.6	20	35
K0309.A5	1/2-13	8	22	2.5	2	30	55
K0309.A6	5/8-11	10	24	3.5	2.5	65	125



Spring Plungers

ball style, slotted, steel

KIPP Spring Plungers, ball style, slotted, steel, heavy end pressure, inch

Item No.	D	D1	L	H	N	Spring force initial pressure F1 approx. N	Spring force final pressure F2 approx. N
K0309.2A1	10-32	3	12	0.9	0.8	19	30
K0309.2AJ	1/4-28	3.5	14	1	1	28	40
K0309.2A2	1/4-20	3.5	14	1	1	28	40
K0309.2A3	5/16-18	5	16	1.5	1.2	47	73
K0309.2A4	3/8-16	6	19	2	1.6	66	100
K0309.2A5	1/2-13	8	22	2.5	2	66	120
K0309.2A6	5/8-11	10	24	3.5	2.5	90	180

KIPP Spring Plungers, ball style, slotted, steel, standard end pressure, metric

Item No.	D	D1	L	H	N	Spring force initial pressure F1 approx. N	Spring force final pressure F2 approx. N
K0309.03	M3	1,5	7	0,4	0,4	1,5	3
K0309.04	M4	2,5	9	0,8	0,6	4	10
K0309.05	M5	3	12	0,9	0,8	6	11
K0309.06	M6	3,5	14	1	1	9	13
K0309.08	M8	5	16	1,5	1,2	15	30
K0309.10	M10	6	19	2	1,6	20	35
K0309.12	M12	8	22	2,5	2	30	55
K0309.16	M16	10	24	3,5	2,5	65	125
K0309.20	M20	12	30	4,5	2,5	80	160

KIPP Spring Plungers, ball style, slotted, steel, heavy end pressure, metric

Item No.	D	D1	L	H	N	Spring force initial pressure F1 approx. N	Spring force final pressure F2 approx. N
K0309.203	M3	1,5	7	0,4	0,4	5	7
K0309.204	M4	2,5	9	0,8	0,6	12	22
K0309.205	M5	3	12	0,9	0,8	19	30
K0309.206	M6	3,5	14	1	1	28	40
K0309.208	M8	5	16	1,5	1,2	47	73
K0309.210	M10	6	19	2	1,6	66	100
K0309.212	M12	8	22	2,5	2	66	120
K0309.216	M16	10	24	3,5	2,5	90	180
K0309.220	M20	12	30	4,5	2,5	115	240