

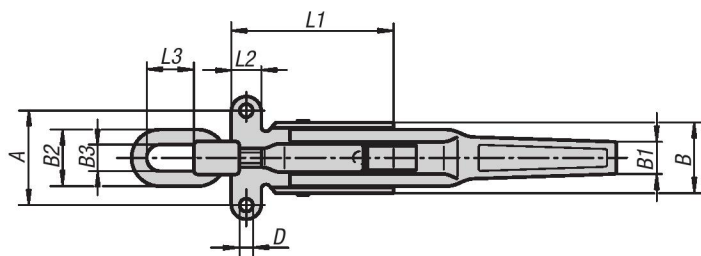
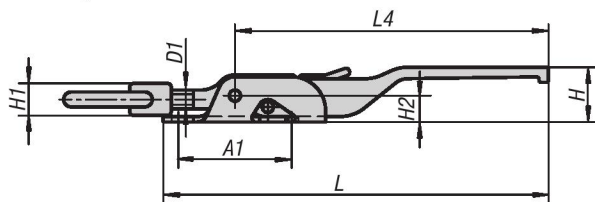


# Adjustable Latches

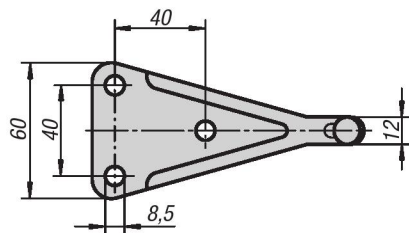
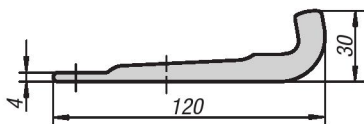
heavy-duty model

METRIC Parts

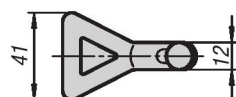
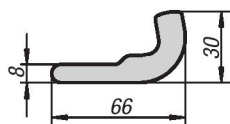
latch  
Style A



catch plate  
Style A



catch plate  
Style B  
(weldable)



**Material:**  
Steel.

**Type:**  
Galvanized and blue chromate.  
Catch plate Style B (weldable) natural finish.

**Part Number Example:**  
Latch K0052.1702041  
Catch plate K0052.91851201

**Note:**  
Heavy, forged latches for high tensile loads. Primarily used on utility vehicles, agricultural and construction machinery. A ratchet prevents unintentional opening when closed.

To compensate for tolerances or to create enough tension the bail can be adjusted using the spindle D1.

Order required catch plate version separately.

The retaining force F1 applies to the latch, not the catch plate.

## KIPP Adjustable Latches heavy-duty model, metric

Item No.	Style	A	A1	B	B1	B2	B3	D	D1	H	H1	H2	L	L1	L2	L3	L4	Retention force F kN
K0052.1702041	A	50	62	37	18	30	14	7	M10	30	17	14	204	86	16	25	165	20000
K0052.1852371	A	65	82	50	20	36	15	8,5	M14x1,5	32	20	18	237	104	21	40	190	30500

## KIPP Catch plate, metric

Item No.	Style
K0052.91851201	A
K0052.92000601	B