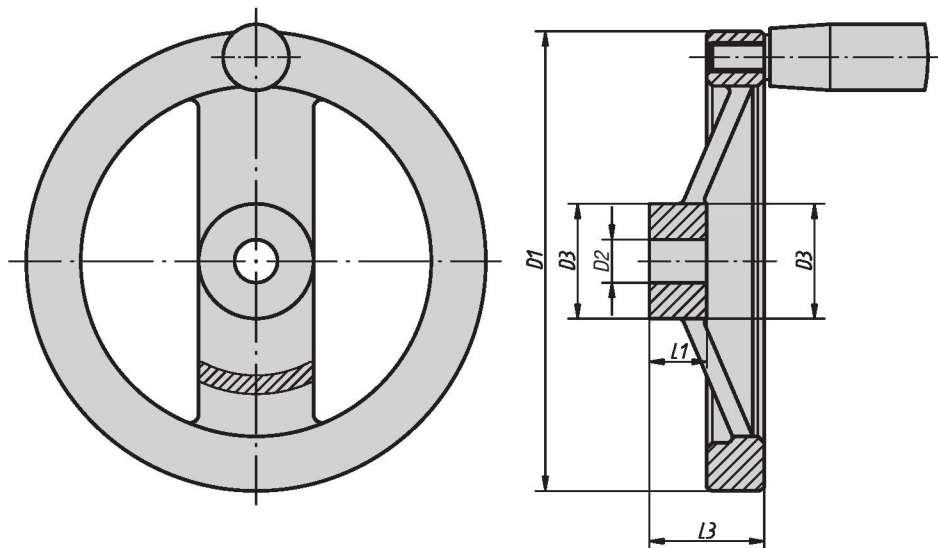




Two-Spoke Handwheels

aluminum planed

INCH
Parts



Material:

Handwheels aluminum;
cylindrical grip black Duroplast PF 31-DIN 7708.
Hub galvanized steel.

Type:

Wheel rim turned and polished.

Part Number Example:

K0162.0080XCN

On request:

Square hole broached hubs or powder-coated handwheels.

KIPP Two-Spoke Handwheels aluminum, planed, without handle, inch

Item No.	D1	D2 line 1	D2 line 2	D3	L1	L3
K0162.0080XCN	80	.312	-	24	16	28
K0162.0080XCO	80	-	.375	24	16	28
K0162.0100XCO	100	.375	-	26	17	33
K0162.0100XCP	100	-	.500	26	17	33
K0162.0125XCO	125	.375	-	31	18	33.5
K0162.0125XCP	125	-	.500	31	18	33.5
K0162.0160XCP	160	.500	-	36	20	39
K0162.0160XCQ	160	-	.625	36	20	39
K0162.0200XCQ	200	.625	-	42	24	45
K0162.0200XCR	200	-	.750	42	24	45
K0162.0250XCR	250	.750	-	48	28	51
K0162.0250XCV	250	-	.875	48	28	51



Two-Spoke Handwheels

aluminum planed

KIPP Two-Spoke Handwheels aluminum, planed, with fixed handle, inch

Item No.	D1	D2 line 1	D2 line 2	D3	L1	L3	Fixed cylinder grip
K0162.2080XCN	80	.312	-	24	16	28	ø18 x M6x40
K0162.2080XCO	80	-	.375	24	16	28	ø18 x M6x40
K0162.2100XCO	100	.375	-	26	17	33	ø18 x M6x40
K0162.2100XCP	100	-	.500	26	17	33	ø18 x M6x40
K0162.2125XCO	125	.375	-	31	18	33.5	ø21 x M8x50
K0162.2125XCP	125	-	.500	31	18	33.5	ø21 x M8x50
K0162.2160XCP	160	.500	-	36	20	39	ø26 x M10x80
K0162.2160XCQ	160	-	.625	36	20	39	ø26 x M10x80
K0162.2200XCQ	200	.625	-	42	24	45	ø26 x M10x80
K0162.2200XCR	200	-	.750	42	24	45	ø26 x M10x80
K0162.2250XCR	250	.750	-	48	28	51	ø28 x M12x90
K0162.2250XCV	250	-	.875	48	28	51	ø28 x M12x90

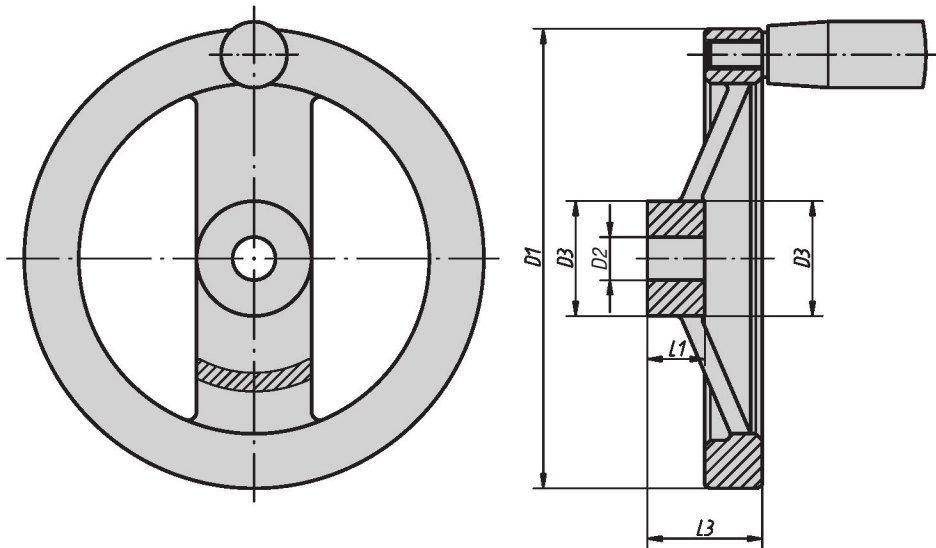
KIPP Two-Spoke Handwheels aluminum, planed, with revolving handle, inch

Item No.	D1	D2 line 1	D2 line 2	D3	L1	L3	Revolving cylinder grip
K0162.4080XCN	80	.312	-	24	16	28	ø18 x M6x40
K0162.4080XCO	80	-	.375	24	16	28	ø18 x M6x40
K0162.4100XCO	100	.375	-	26	17	33	ø18 x M6x40
K0162.4100XCP	100	-	.500	26	17	33	ø18 x M6x40
K0162.4125XCO	125	.375	-	31	18	33.5	ø22 x M8x56
K0162.4125XCP	125	-	.500	31	18	33.5	ø22 x M8x56
K0162.4160XCP	160	.500	-	36	20	39	ø26 x M10x80
K0162.4160XCQ	160	-	.625	36	20	39	ø26 x M10x80
K0162.4200XCQ	200	.625	-	42	24	45	ø26 x M10x80
K0162.4200XCR	200	-	.750	42	24	45	ø26 x M10x80
K0162.4250XCR	250	.750	-	48	28	51	ø31 x M12x102
K0162.4250XCV	250	-	.875	48	28	51	ø31 x M12x102

Two-Spoke Handwheels

aluminum planed

METRIC
Parts



Material:

Handwheels aluminum;
cylindrical grip black Duroplast PF 31-DIN 7708.
Hub galvanized steel.

Type:

Wheel rim turned and polished.

Part Number Example:

K0162.0080X10

On request:

Square hole broached hubs or powder-coated handwheels.

KIPP Two-Spoke Handwheels aluminum, planed, without handle, metric

Item No.	D1	D2 line 1	D2 line 2	D3	L1	L3
K0162.0080X10	80	10	-	24	16	28
K0162.0080X12	80	-	12	24	16	28
K0162.0100X10	100	10	-	26	17	33
K0162.0100X12	100	-	12	26	17	33
K0162.0125X12	125	12	-	31	18	33,5
K0162.0125X14	125	-	14	31	18	33,5
K0162.0160X14	160	14	-	36	20	39
K0162.0160X16	160	-	16	36	20	39
K0162.0200X18	200	18	-	42	24	45
K0162.0200X20	200	-	20	42	24	45
K0162.0250X22	250	22	-	48	28	51
K0162.0250X26	250	-	26	48	28	51



Two-Spoke Handwheels

aluminum planed

KIPP Two-Spoke Handwheels aluminum, planed, with fixed handle, metric

Item No.	D1	D2 line 1	D2 line 2	D3	L1	L3	Fixed cylinder grip
K0162.2080X10	80	10	-	24	16	28	ø18 x M6 x 40
K0162.2080X12	80	-	12	24	16	28	ø18 x M6 x 40
K0162.2100X10	100	10	-	26	17	33	ø18 x M6 x 40
K0162.2100X12	100	-	12	26	17	33	ø18 x M6 x 40
K0162.2125X12	125	12	-	31	18	33,5	ø21 x M8 x 50
K0162.2125X14	125	-	14	31	18	33,5	ø21 x M8 x 50
K0162.2160X14	160	14	-	36	20	39	ø26 x M10 x 80
K0162.2160X16	160	-	16	36	20	39	ø26 x M10 x 80
K0162.2200X18	200	18	-	42	24	45	ø26 x M10 x 80
K0162.2200X20	200	-	20	42	24	45	ø26 x M10 x 80
K0162.2250X22	250	22	-	48	28	51	ø28 x M12 x 90
K0162.2250X26	250	-	26	48	28	51	ø28 x M12 x 90

KIPP Two-Spoke Handwheels aluminum, planed, with revolving handle, metric

Item No.	D1	D2 line 1	D2 line 2	D3	L1	L3	Revolving cylinder grip
K0162.4080X10	80	10	-	24	16	28	ø18 x M6 x 40
K0162.4080X12	80	-	12	24	16	28	ø18 x M6 x 40
K0162.4100X10	100	10	-	26	17	33	ø18 x M6 x 40
K0162.4100X12	100	-	12	26	17	33	ø18 x M6 x 40
K0162.4125X12	125	12	-	31	18	33,5	ø22 x M8 x 56
K0162.4125X14	125	-	14	31	18	33,5	ø22 x M8 x 56
K0162.4160X14	160	14	-	36	20	39	ø26 x M10 x 80
K0162.4160X16	160	-	16	36	20	39	ø26 x M10 x 80
K0162.4200X18	200	18	-	42	24	45	ø26 x M10 x 80
K0162.4200X20	200	-	20	42	24	45	ø26 x M10 x 80
K0162.4250X22	250	22	-	48	28	51	ø31 x M12 x 102
K0162.4250X26	250	-	26	48	28	51	ø31 x M12 x 102