

# Cylindrical Positioning Pins

METRIC  
Parts

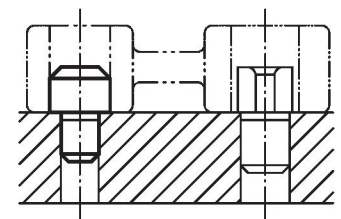
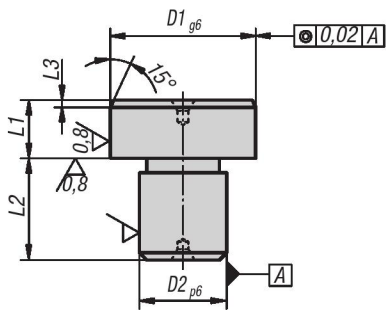


**Material:**  
Tool steel.

**Type:**  
Hardened and ground.

**Part Number Example:**  
K0352.08

**Note:**  
Face surfaces with center hole.



## KIPP Cylindrical Positioning Pins, ground, metric

Item No.	Version	D1	D2	L1	L2	L3
K0352.05	D1 ground	8	5	8	8	2
K0352.07	D1 ground	10	7	8	8	2
K0352.08	D1 ground	12	8	8	10	2
K0352.081	D1 ground	14	8	8	10	3
K0352.09	D1 ground	16	9	8	12	3
K0352.12	D1 ground	18	12	8	12	3
K0352.121	D1 ground	20	12	8	14	3
K0352.14	D1 ground	22	14	8	14	3
K0352.16	D1 ground	25	16	8	16	3