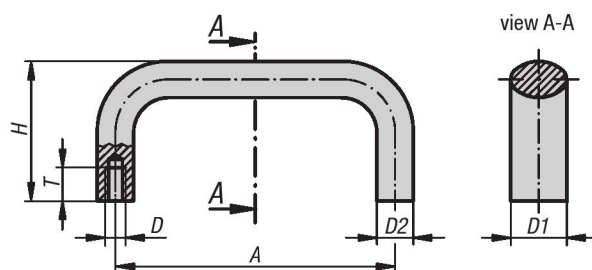


Pull Handles

aluminum

METRIC
Parts



Material:

Oval aluminum EN AW-6060

Type:

Black powder-coated, natural anodized finish

Part Number Example:

K0204.10001

Note:

These handles are extremely robust and can be used where heavy duty equipment is called for.

KIPP Pull Handles, aluminum, metric

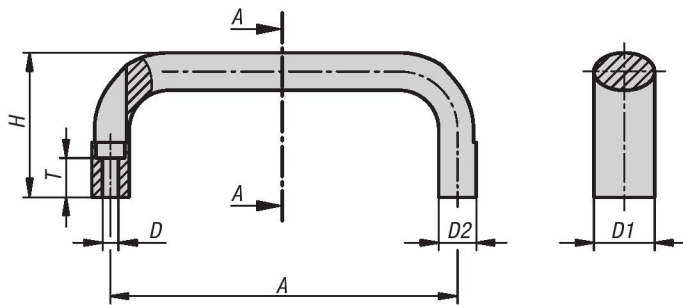
Item No. powder-coated, black	Item No. natural color anodized	A	D	D1	D2	H	T	Load capacity N
K0204.10001	K0204.10003	100	M6	21/20	13	50	12	1000
K0204.11201	K0204.11203	112	M6	21/20	13	50	12	1000
K0204.12001	K0204.12003	120	M6	21/20	13	50	12	1000
K0204.12801	K0204.12803	128	M6	21/20	13	50	12	1000
K0204.1600106	K0204.1600306	160	M6	21/20	13	50	12	1000
K0204.1120108	K0204.1120308	112	M8	25/26	17	55	14	1000
K0204.1200108	K0204.1200308	120	M8	25/26	17	55	14	1000
K0204.1280108	K0204.1280308	128	M8	25/26	17	55	14	1000
K0204.16001	K0204.16003	160	M8	25/26	17	55	14	1000
K0204.18001	K0204.18003	180	M8	25/26	17	55	14	1000
K0204.19201	K0204.19203	192	M8	25/26	17	55	14	1000
K0204.35001	K0204.35003	350	M8	25/26	17	55	14	1000

Pull Handles oval

with thru hole

METRIC
Parts

New Item



Material:

Oval aluminum EN AW-6060

Type:

Black powder-coated or ruby red RAL 3003.

Part Number Example:

K0204.11120105

Accessories:

Suitable screws for mounting the handles:

- Socket head screw ISO 4762-M5/ M6.

KIPP Pull Handles oval with thru hole, metric

Item No. black powder-coated	Item No. ruby red powder-coated	A	D	D1	D2	H	T	Load capacity N
K0204.11000105	K0204.11002705	100	5,5	21	13	50	13,6	1.000
K0204.11120105	K0204.11122705	112	5,5	21	13	50	13,6	1.000
K0204.11200105	K0204.11202705	120	5,5	21	13	50	13,6	1.000
K0204.11280105	K0204.11282705	128	5,5	21	13	50	13,6	1.000
K0204.11600105	K0204.11602705	160	5,5	21	13	50	13,6	1.000
K0204.11120106	K0204.11122706	112	6,6	25	17	55	11	1.000
K0204.11200106	K0204.11202706	120	6,6	25	17	55	11	1.000
K0204.11280106	K0204.11282706	128	6,6	25	17	55	11	1.000
K0204.11600106	K0204.11602706	160	6,6	25	17	55	11	1.000
K0204.11800106	K0204.11802706	180	6,6	25	17	55	11	1.000