



	nm	808 nm
+00iPKRVVWROHUDQFLD	nm -HOOHP	±2,5 nm
+00iPKRVVWROWROiV	QPWDELOLQDWKPPUVpQHWWHOMHV PLKPPUVpQHWIHOHWW	< 1 nm
.LPHQHWLWHOMHVtWPpQ	mW	≤ 6.000 mW
7pUEHOLPyG		7EHHUHVWLUiQPPyG
0WVWYVWDELOLWIVDWHPSIHOHWW	μrad / K	< 15 μrad / K
.LERFVIVLSRQWPDVWID	mm	27 mm
+RVVWVQHUQDWDELOLWIV	(24 h)	< 1 %
)HOPHOHVpVLLG	min	< 2 min
/pEUHPPyG		3&iUDPBUOiWRVVDODVt&WpVHO7(&

( / ( .752026 / 55

hPLIHVWVp		24 VDC
0&5pVLHiUDP	(PDRQ	< 10 A
9pGHOHP		7PHOHGpVHOHQLPGHOPpV/(OKLEIVMHOIRUGtWRWWSRODULWIVpViWPHQHW GHOP(6VWV
(OHVURPRVWHVHOpV		3RWHQFLiOPHQWHVKI
EHVpVHFVDWODVVD		6VWHFVUSyOV
(QHUEDIRVWIV		fi:
.RPPQLiFLyLQWHUipV		,&56
WVWOLVPRGDiFLy	77/	?

237 ,.63(&),. &,?

9HQWLOiWRUV	IP	RRPRQDQDOSURiLO
9RQDOHGHVp	DRQDOKRVWyo	fi
9RQDOHvp	WLSL	fi
)VWVWUWRPIQ	PP	PPLPPL

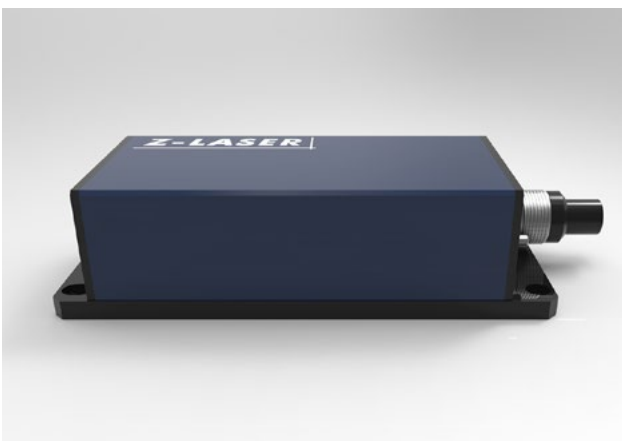
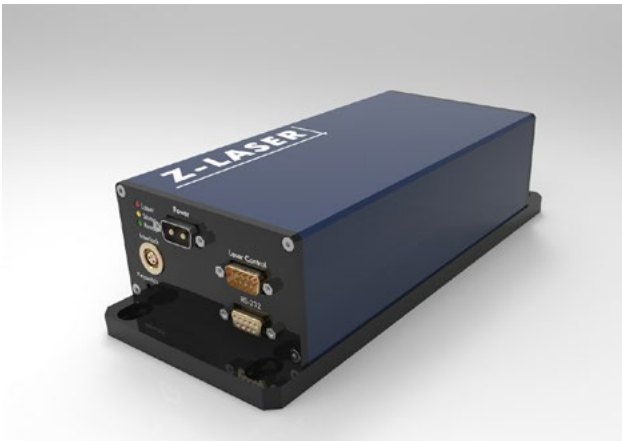
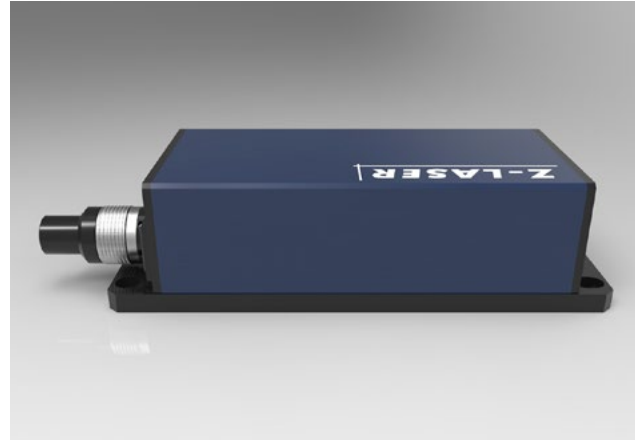
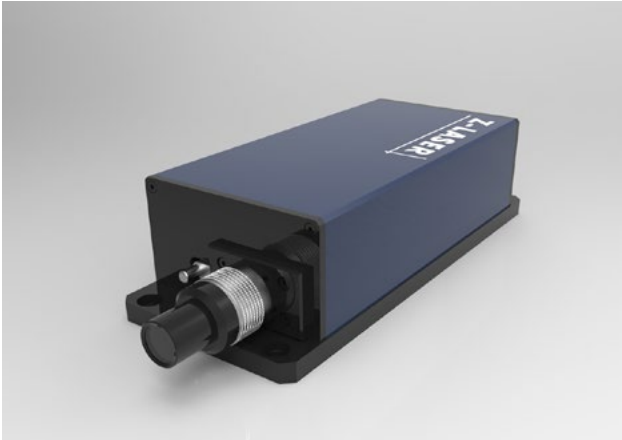
6=2)79(5-/(/0= .

ODSRWOHPUHGpVLPHQHWLWHOMHVtWPpQVDEIORVUHQGVVUBQILDiFLyGLEWVWOLVPRGDiFLyLQWHQVWVWVDEIORV

.g51<=(7,)/(7e 7/(.

hPLKPPUVpQHW	°C / °F	SLPIL
7iUROiVLKPPUVpQHW	°C / °F	SLPIL
SiUDWUWDORP	%	OHFVDSyGiV
(ORVWDRWVK	:	PD

## ZQ2 FROM DIFFERENT ANGLES



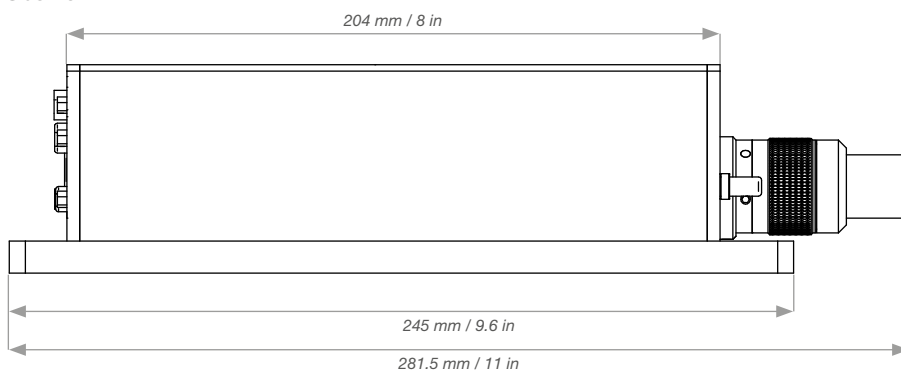
## KEYNOTES

<sup>(1)</sup> Emission point height	Offset of optical axis to ground plate
<sup>(2)</sup> Line length / fan angle	at $>13.5\% I_{max}$
<sup>(3)</sup> Line straightness	Deviation from best fit line over the middle 80% of the line, for homogeneous lines
<sup>(4)</sup> Line uniformity	Maximum relative optical power variation over the middle 80% of the line, for homogeneous lines
<sup>(5)</sup> Indications	

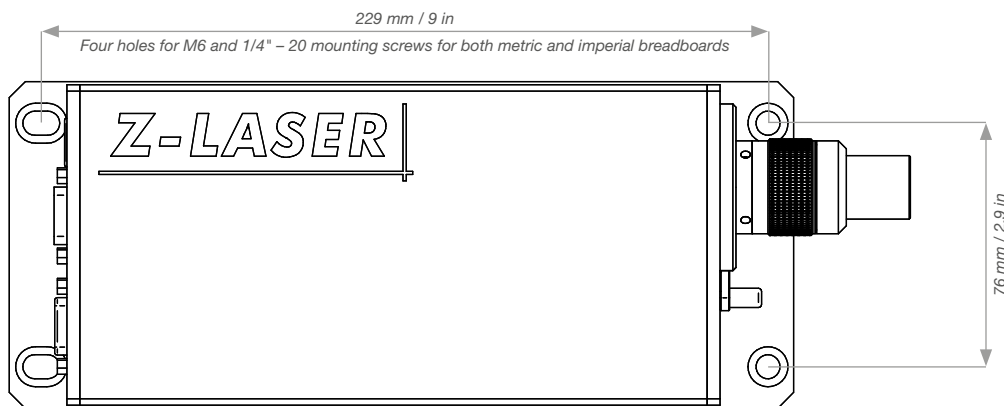
## MECHANICAL SPECIFICATIONS

Weight	kg / lbs	2.50 kg / 5.51 lbs
Dimension	mm / inch	281.5 x 102 x 65 mm / 11.08 x 4.02 x 2.56 in
Diameter head Ø	mm / inch	20 mm / 0.79 in
Material		Aluminium (eloxed)
Protection class		IP 50
Mounting		4x Screws

Side view



Topview



Rear view

