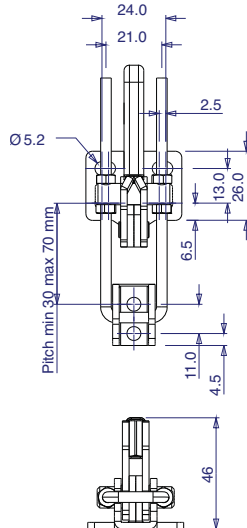
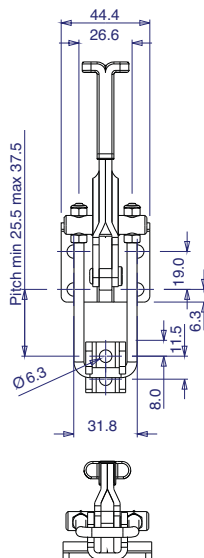
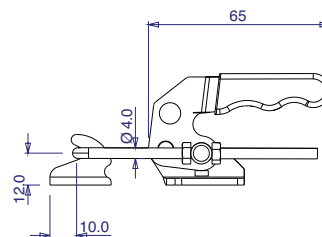


► Horizontal Versions

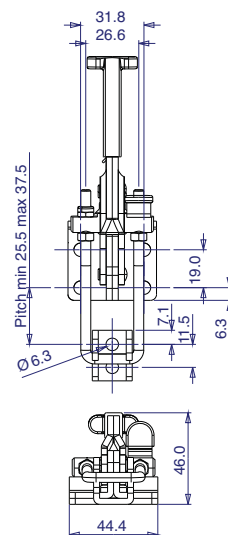
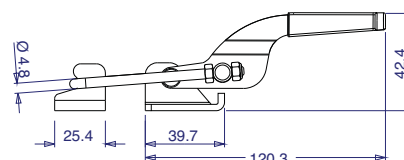
stainless



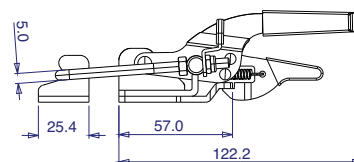
Part No:	GH-40820-SS
Holding Force:	200Kg
Weight:	0.12Kg
Latch Plate Supplied:	GH-40820-LPSS



Part No:	GH-431
Holding Force:	318Kg
Weight:	0.26Kg
Latch Plate Supplied:	GH-431-LP

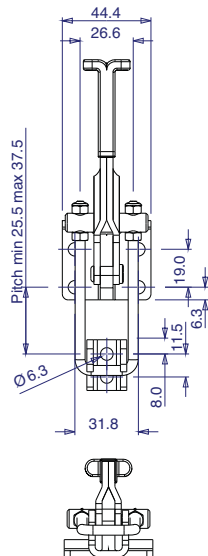


Part No:	GH-431-R
Holding Force:	318Kg
Weight:	0.26Kg
Latch Plate Supplied:	GH-431-LP

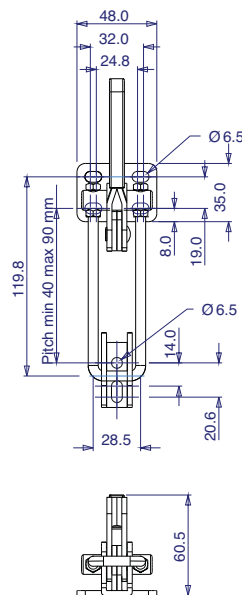
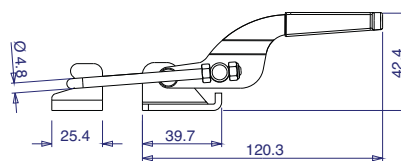


► Horizontal Versions

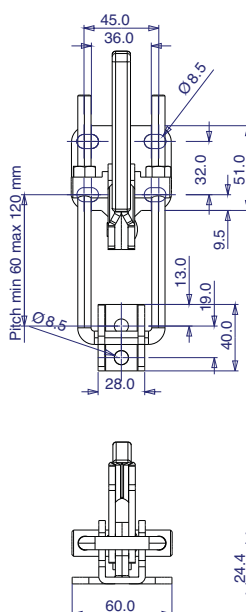
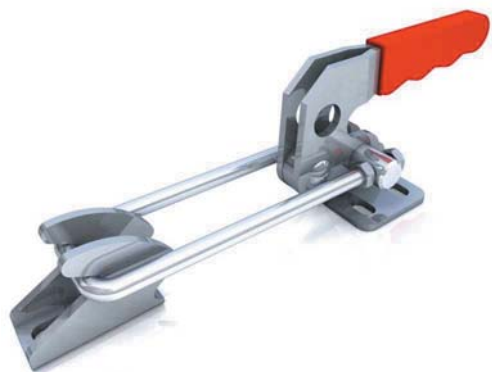
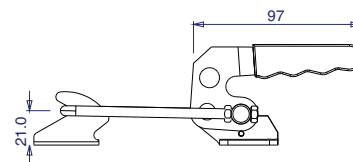
stainless



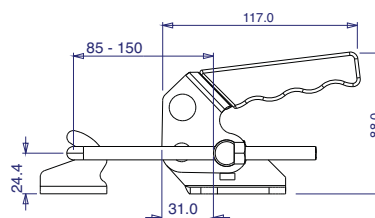
Part No:	GH-431-SS
Holding Force:	318Kg
Weight:	0.26Kg
Latch Plate Supplied:	GH-431-LPSS



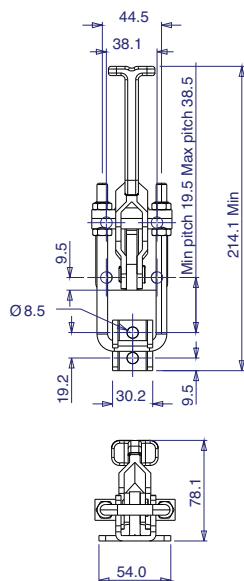
Part No:	GH-40840
Holding Force:	400Kg
Weight:	0.306Kg
Latch Plate Supplied:	GH-40840-LP



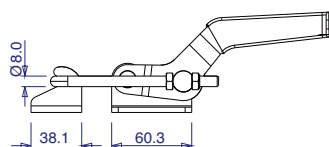
Part No:	GH-40870
Holding Force:	700Kg
Weight:	0.7Kg
Latch Plate Supplied:	GH-40870-LP



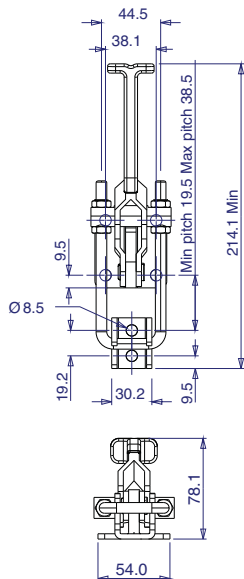
► Horizontal Versions



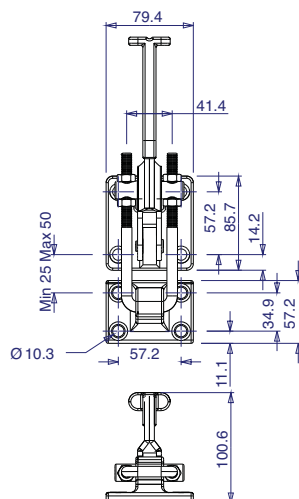
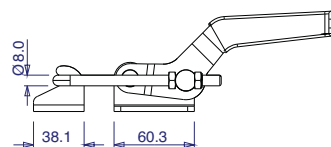
Part No:	GH-40341
Holding Force:	900Kg
Weight:	0.68Kg
Latch Plate Supplied:	GH-40341-LP



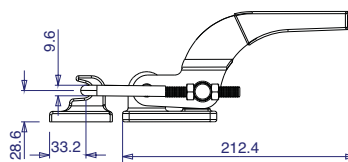
stainless



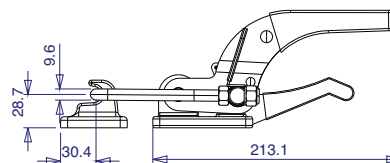
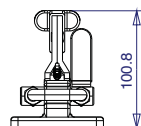
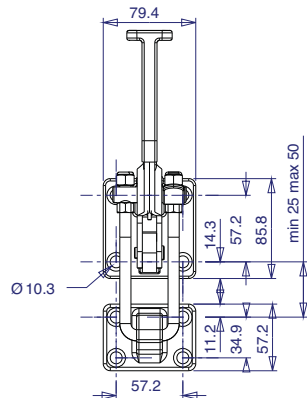
Part No:	GH-40341-SS
Holding Force:	900Kg
Weight:	0.68Kg
Latch Plate Supplied:	GH-40341-LPSS



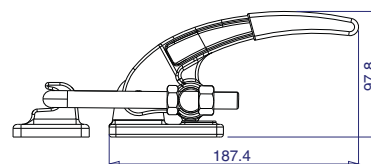
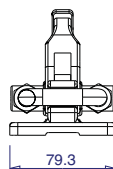
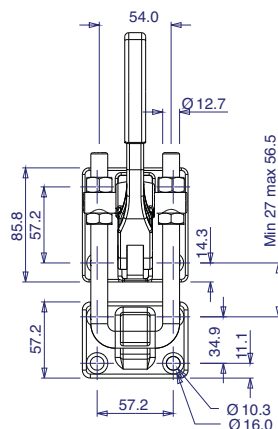
Part No:	GH-40370
Holding Force:	1818Kg
Weight:	1.26Kg
Latch Plate Supplied:	GH-40370-LP



► Horizontal Versions

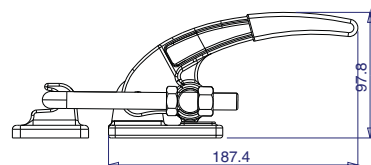
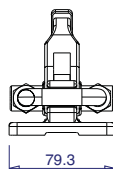
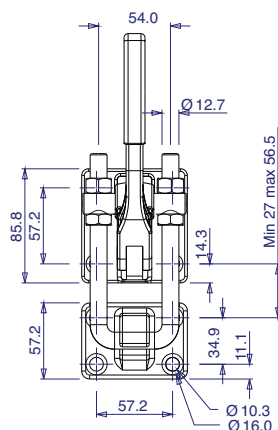


Part No:	GH-40370-R
Holding Force:	1818Kg
Weight:	1.26Kg
Latch Plate Supplied:	GH-40370-LP



Part No:	GH-40380
Holding Force:	3400Kg
Weight:	1.48Kg
Latch Plate Supplied:	GH-40370-LP

stainless



Part No:	GH-40380-SS
Holding Force:	3400Kg
Weight:	1.48Kg
Latch Plate Supplied:	GH-40370-LPSS

