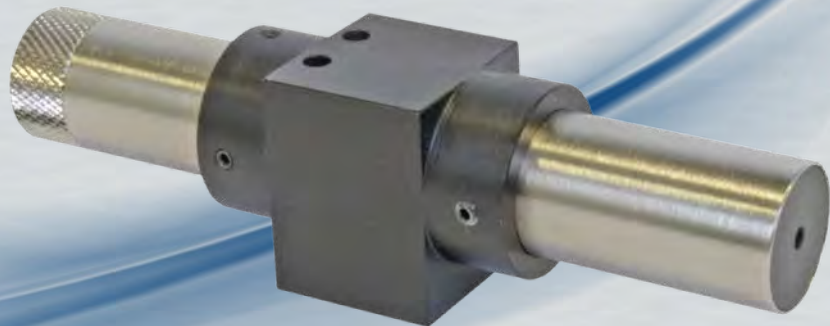


# Z-LASER

## Belt-Aligner

Laser-precise alignment  
of belt and chain drives

- » Laser transmitter with battery  $\varnothing$  20 x 120mm
- » With a strong magnetic holder – 10kg/100N
- » Weight 250g



Proven in harsh  
environments

Extremely robust -  
Nickel plated brass

Measurement up to 8m

Strong power 5mW  
Patented:  
Only 1 battery 1,5V AA

- » Also suitable for non-magnetic drives
- » Constantly improved - highly functional
- » With additional magnetic plate – for best parallelism

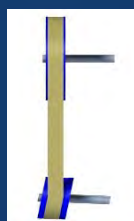
**Avoid misalignments in your drives**



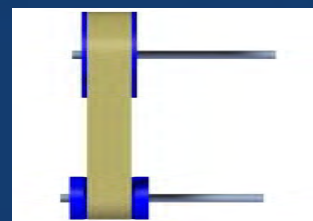
OFFSET



TWISTED



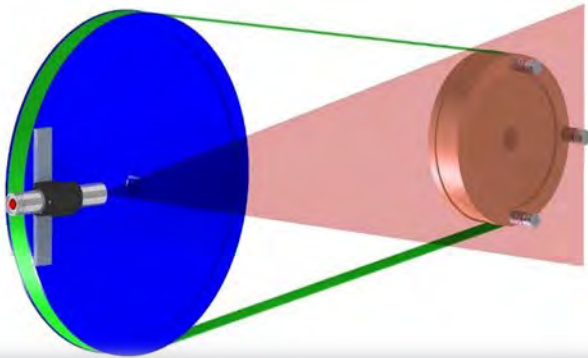
TIPPED



PERFECTLY ALIGNED

# Belt-Aligner

Make use of the potentials of your drives



- ▶ Reduce the wear of belts, chains, pulleys and running wheels as well as bearings and seals
- ▶ Avoid dangerous vibrations
- ▶ Extend the service life of the entire drive system
- ▶ Provide for an easy start and a low noise, smooth operation
- ▶ Save energy (energy costs)
- ▶ In particular, avoid unplanned and costly downtime

Use the robust and highly effective "maintenance tool from Z-LASER"



- ▶ 1 Magnetic plate LxWxH 120x20x6mm with 8 magnetic buttons
- ▶ 1 Laser transmitter Ø 20x120mm, with strong, own magnetic holder
- ▶ 1 On/Off switch, red pushbutton, threaded
- ▶ 1 AA battery 1.5V
- ▶ 5 Target markers / aluminum LxWxH 32x10x10mm with engraving and magnetic button
- ▶ Not pictured: 1 case with foam inserts for a clear intake of the parts

## Technical specifications

Measurement	Distance up to 8m
Focus	2,0m
Optic	Line, Gaussian light distribution, 90° fan angle
Output power	5mW
Laser class	1M (EN 60825-1:2007)
Wavelength	635nm
Laser color	Red
Accuracy	< 0.5mm/m
Parallelism	< 0.5mrad to the magnetic surface
Angle measurement	Better than 0.2°
Temperature range	-20°C to +40°C
Housing	Nickel plated brass Ø 20 x 120mm
Weight	With magnetic holder 250g
Securing	Magnetic; When non-magnetic: drives secure with double-sided adhesive tape
Supply voltage	Patented, requires only one 1.5V AA battery, life 15 to 20 hours
Certified Warranty	CE approved, FDA approved 2 years

