

► Neoprene Tipped Spindles

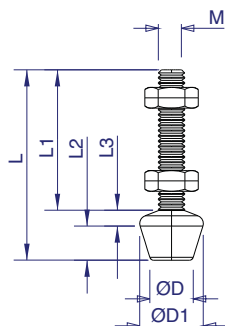


METRIC NEOPRENE TIPPED ZINC PLATED SPINDLES

Part No	Description	M	D	D1	L	L1	L2	L3
FC-041807	M4 x 18mm Neoprene Tipped Zinc Plated Spindle 1 Nut	M4	6	7	18	14	4	-
FC-043207	M4 x 32mm Neoprene Tipped Zinc Plated Spindle 2 Nuts	M4	8	12	32	22	8	2
FC-043207-LP	M4 x 32mm LP Neoprene Tipped Zinc Plated Spindle 2 Nuts	M4	10	-	34	28	6	-
FC-044207	M4 x 42mm Neoprene Tipped Zinc Plated Spindle 2 Nuts	M4	8	12	42	32	8	2
FC-053008	M5 x 30mm Neoprene Tipped Zinc Plated Spindle 2 Nuts	M5	11	13	30	20	8	2
FC-053808	M5 x 38mm Neoprene Tipped Zinc Plated Spindle 2 Nuts	M5	11	13	42	32	8	2
FC-054808	M5 x 48mm Neoprene Tipped Zinc Plated Spindle 2 Nuts	M5	11	13	52	42	8	2
FC-064410	M6 x 44mm Neoprene Tipped Zinc Plated Spindle 2 Nuts	M6	10	16	44	30	12	2
FC-065110	M6 x 50mm Neoprene Tipped Zinc Plated Spindle 2 Nuts	M6	10	16	51	37	12	2
FC-086312	M8 x 64mm Neoprene Tipped Zinc Plated Spindle 2 Nuts	M8	13	19	63	44	15	3
FC-087512	M8 x 75mm Neoprene Tipped Zinc Plated Spindle 2 Nuts	M8	13	19	75	56	15	3
FC-081212	M8 x 120mm Neoprene Tipped Zinc Plated Spindle 2 Nuts	M8	13	19	123	104	15	3
FC-108515	M10 x 85mm Neoprene Tipped Zinc Plated Spindle 2 Nuts	M10	24	30	85	59	20	6
FC-121017	M12 x 100 Neoprene Tipped Zinc Plated Spindle 2 Nuts	M12	25	31	100	74	20	6

METRIC NEOPRENE TIPPED STAINLESS STEEL SPINDLES

Part No	Description	M	D	D1	L	L1	L2	L3
FC-042507-SS	M4 x 25mm Neoprene Tipped Stainless Steel Spindle 2 Nuts	M4	8	12	25	17	8	2
FC-054208-SS	M5 x 42mm Neoprene Tipped Stainless Steel Spindle 2 Nuts	M5	11	13	32	22	8	2
FC-065110-SS	M6 x 50mm Neoprene Tipped Stainless Steel Spindle 2 Nuts	M6	10	16	51	37	12	2
FC-086312-SS	M8 x 64mm Neoprene Tipped Stainless Steel Spindle 2 Nuts	M8	13	19	63	44	15	3
FC-108515-SS	M10 x 85mm Neoprene Tipped Stainless Steel Spindle 2 Nuts	M10	24	30	85	59	20	6

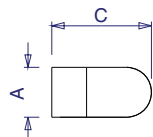
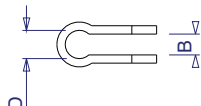


UNC NEOPRENE TIPPED ZINC PLATED SPINDLES

Part No	Description
FC-10138	10-24 UNC x 1 ³ / ₈ " Neoprene Tipped Zinc Plated Spindle 2 Nuts
FC-10138-LP	10-24 UNC x 1 ³ / ₈ " Neoprene Tipped Zinc Plated Spindle 2 Nuts LP
FC-12334	1 ¹ / ₂ -13 UNC x 3 ³ / ₄ " Neoprene Tipped Zinc Plated Spindle 2 Nuts
FC-14134	1 ¹ / ₄ -20 UNC x 1 ³ / ₄ " Neoprene Tipped Zinc Plated Spindle 2 Nuts
FC-14218	1 ¹ / ₄ -20 UNC x 2 ¹ / ₈ " Neoprene Tipped Zinc Plated Spindle 2 Nuts
FC-38312	3 ⁸ / ₁₆ -16 UNC x 3 ¹ / ₂ " Neoprene Tipped Zinc Plated Spindle 2 Nuts
FC-38412	3 ⁸ / ₁₆ -16 UNC x 4 ¹ / ₂ " Neoprene Tipped Zinc Plated Spindle 2 Nuts
FC-56212	5 ¹⁶ / ₁₆ -18 UNC x 2 ¹ / ₂ " Neoprene Tipped Zinc Plated Spindle 2 Nuts
FC-56300	5 ¹⁶ / ₁₆ -18 UNC x 3" Neoprene Tipped Zinc Plated Spindle 2 Nuts

LP = low profile

► Bolt Retainers



Part No	Description	D	A	B	C
BR-140	Bolt Retainer Zinc Plated For 6mm & 1/4" Spindles	7	12	5	24
BR-141	Bolt Retainer Zinc Plated For 6mm & 1/4" Spindles	7	10	5	22
BR-516	Bolt Retainer Zinc Plated For 8mm & 5/16" Spindles	9	16	7	31
BR-380	Bolt Retainer Zinc Plated For 10mm & 3/8" Spindles	10	20	9	40
BR-120	Bolt Retainer Zinc Plated For 12mm & 1/2" Spindles	15	23	10	44
BR-580	Bolt Retainer Zinc Plated For 16mm & 5/8" Spindles	16	32	11	50