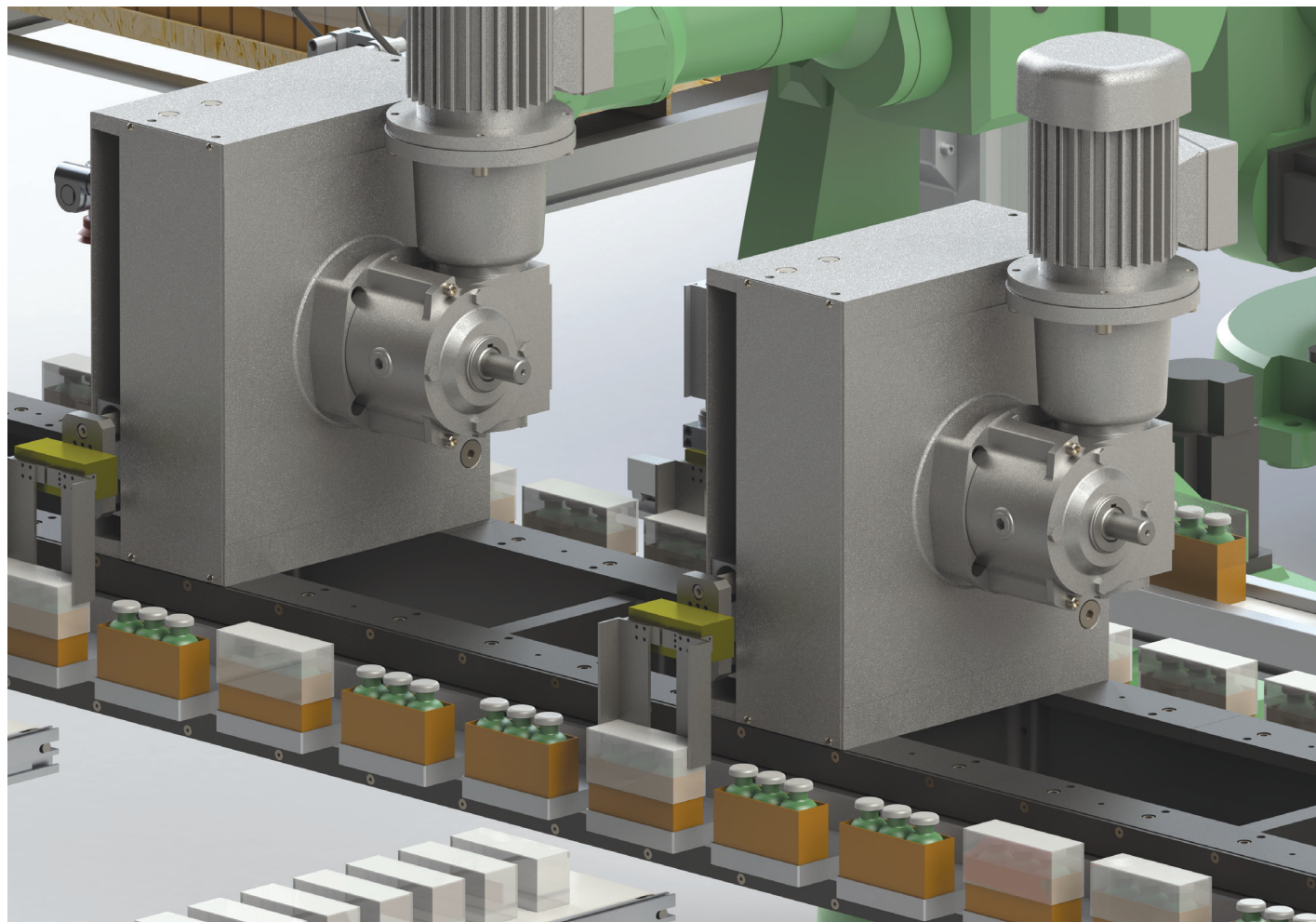


LINEAR PART HANDLER

Linear Part Handler | Gripper Mounting Accessory

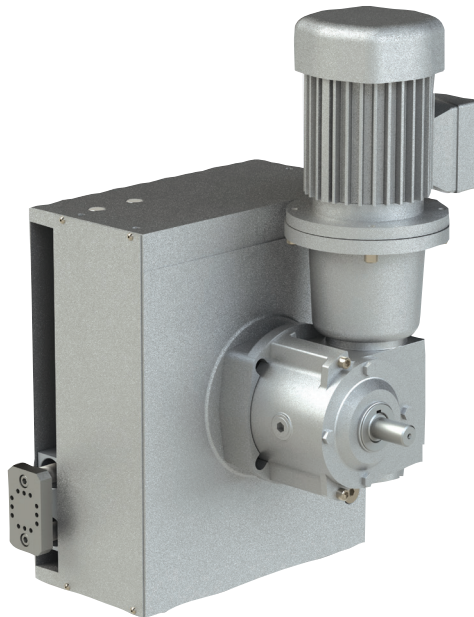


Indexer driving a conveyor and Linear Part Handlers

- Operation can be asynchronous (cycle on demand) – a single index followed by a variable dwell time, or the operation can be continuous.
- Index motion time is changed by changing the motion profile of the servo motor.
- Dwell time is variable. Single axis servo or multiple axis servo controllers can be used.
- More than 60 cycles per minute – maximum cycle rate can be determined by your application engineer.

LINEAR PART HANDLER

Features, Table of Contents



Features:

CAMCO Cambot® Linear Parts Handlers, combined with other DE-STA-CO products, offer a low maintenance, cost-effective solution for a complete parts handling package.

Cost effective design for low-cost operation

- Reliable CAMCO mechanical cam design
- Lubed for Life

Easy integration with other DE-STA-CO products for one-stop shopping

- Camco Modular Precision Link Conveyors and Ring Drives
- DE-STA-CO Vacuum products
- Robohand Direct Connect™ Grippers (no adapter plates) and E-Gripper

Customized for your application

- Input shaft available on either side for ease of integration
- Line shaft drive or gear reducer and motor drive package for synchronous or asynchronous operation

Standard or custom strokes and timing designed for your specific requirements

Applications:

Automated production systems with small parts transfer such as consumer products, electronics, and medical device assembly and test.

Table of Contents

How to Order	IN-LPP-3
M100/M150	IN-LPP-5

LINEAR PART HANDLER

How To Order

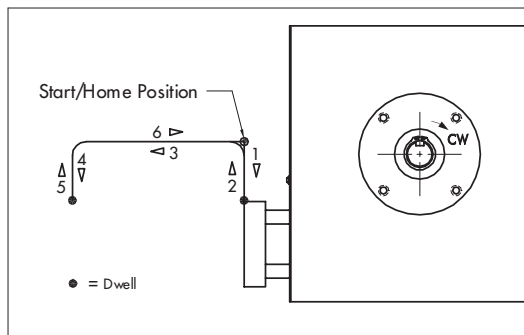
LPP Ordering Procedure

1. Model
2. Lift (Vertical) Stroke
3. Transfer (Horizontal) Stroke

Standard Strokes: Lift (mm) x Transfer (mm)

M100	M150
15 x 100	15 x 150
45 x 100	45 x 150
65 x 20	75 x 50
65 x 60	75 x 110
65 x 100	75 x 150

4. Output Sequence (Standard or Custom)

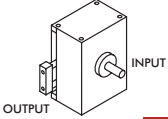
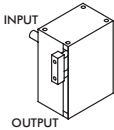
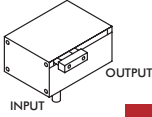
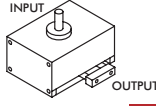
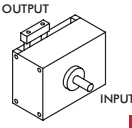
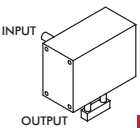


5. Drive Page including Gear Reducer, Motor, and AC Drive

Model	Gear Reducer	AC Motor	1 hp AC Drive Input Voltage (select 1)		
M100	R180	1/3 hp	120 VAC	240 VAC	480 VAC
M150	R225	3/4 hp	120 VAC	240 VAC	480 VAC

LINEAR PART HANDLER

Mounting Position

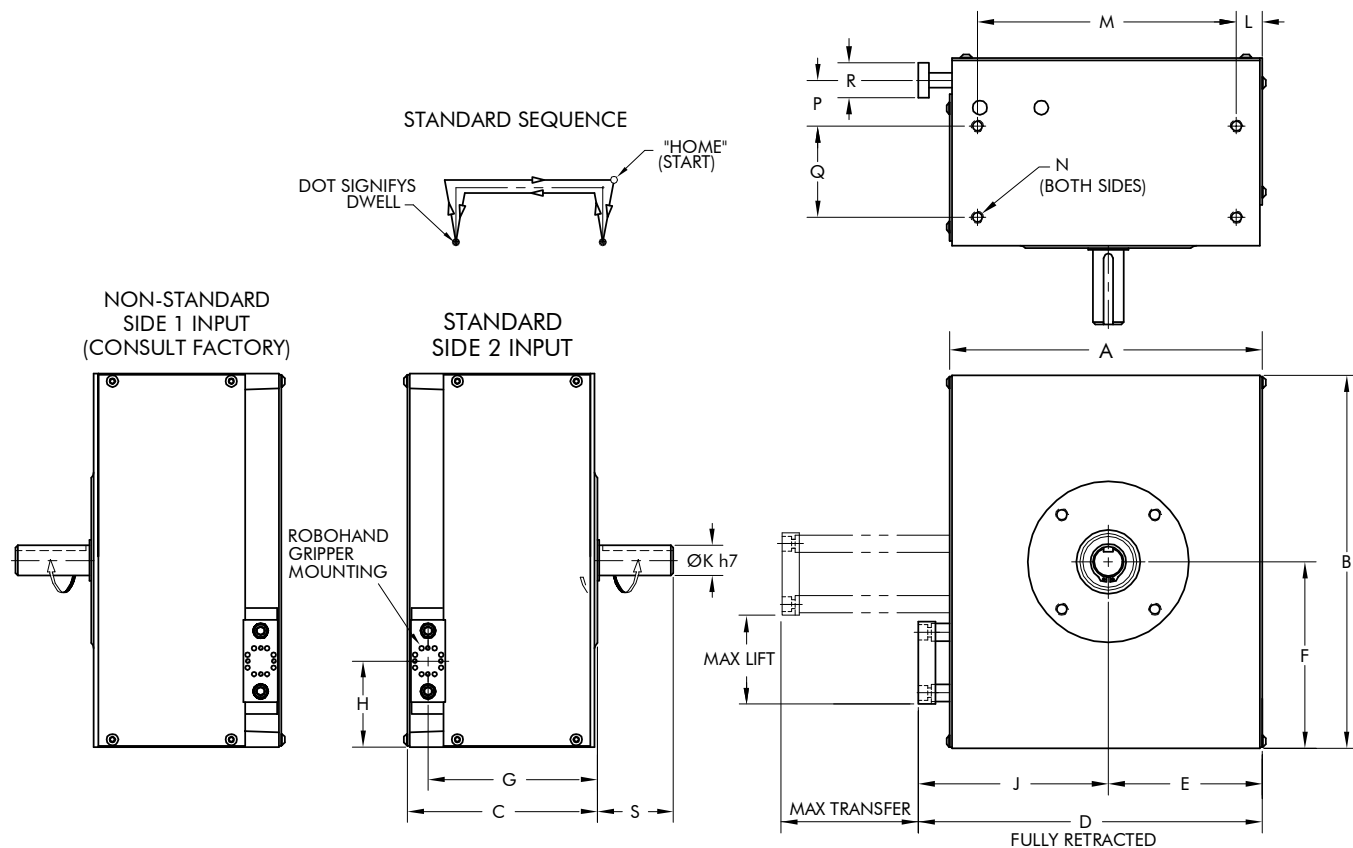
OHUI (output horizontal, under input)	OHOI (output horizontal, over input)	OHID (output horizontal, input down)	OHIU (output horizontal, input up)	VU (output vertical up)	VD (output vertical down)
 1	 2	 3	 4	 5	 6

Gear Reducer Mounting Positions

		Mounting "A"		Mounting "B"	
		RH	LH	RH	LH
SIDE 1	 A	 B	 C	 D	
	SIDE 2	 E	 F	 G	 H
		Mounting "C"		Mounting "D"	
		RH	LH	RH	LH
SIDE 1	 J	 K	 L	 M	
	SIDE 2	 N	 P	 R	 S

M100/M150 SERIES

Linear Part Handler | Dimensions, Technical Information



Model	A	B	C	D	E	F	G	H	J	K	L	M	N	P	Q	R	S
M100	251	290	145	279.7	123	145	130	65	157	25	12	225	4 x M8	40	65	25.4	50
M150	332	400	170	366	160	200	148	90	206	30	15	300	4 x M10	40	80	51	55

Technical Specifications

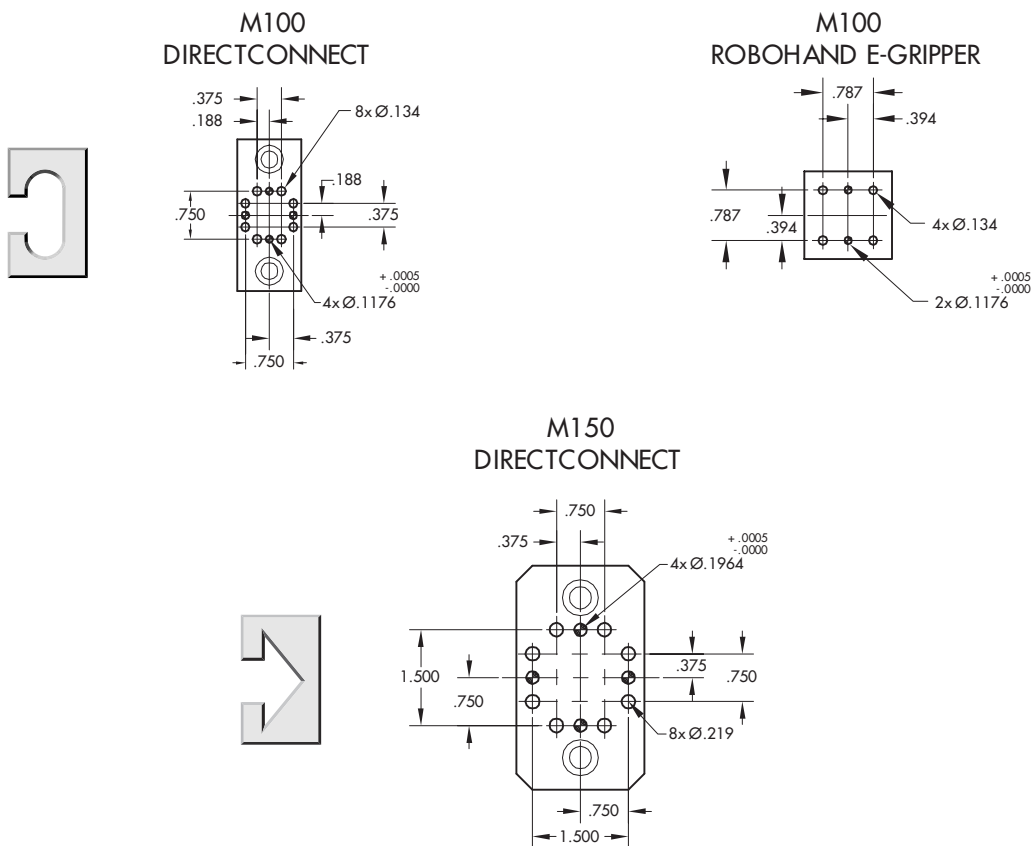
Model	Maximum Lift	Maximum Transfer	Capacity at 30 rpm	Capacity at 60 rpm
M100	65 mm	100 mm	8 kg (18 lbs)	3.6 kg (8 lbs)
M150	75 mm	150 mm	18 kg (40 lbs)	9 kg (20 lbs)

Model	Lift		Transfer	
	Accuracy	Repeatability	Accuracy	Repeatability
M100	±.13 mm (±.005")	±.03 mm (±.001")	±.08 mm (±.003")	±.03 mm (±.001")
M150	±.20 mm (±.008")	±.08 mm (±.003")	±.08 mm (±.003")	±.03 mm (±.001")

M100/M150 SERIES

Linear Part Handler | Accessories

Gripper Mounting Block



Robohand DirectConnect Grippers & Rotaries

Consult the DE-STA-CO Automation Catalog or your local sales representative for information about these items.

Model	E-Gripper	DPDS/DPDL	DPG	DPP	DPW	DCT	DRF
M100	RPE-100M RPE-101M	DPDS-047M DPDS-056M DPDL-047M DPDL-056M	N/A	DPP-10M-06 DPP-10M-12 DPP-14M-15 DPP-14M-25	DPW-250M-1 DPW-250M-2	DCT-12M DCT-16M DCT-20M	N/A
M150	N/A	DPDS-088M DPDS-125M DPDL-088M DPDL-125M	DPG-10M-1 DPG-10M-2 DPG-10M-3 DPG-10M-4	DPP-20M-25 DPP-20M-28 DPP-28M-31 DPP-28M-50	DPW-375M-1 DPW-375M-2 DPW-500M-1 DPW-500M-2	DCT-25M	DRF/DRG-075M DRF/DRG-094M DRF/DRG-106M