

82U50-3 SERIES

Pneumatic Pin Clamps and Packages | Features and Benefits, Ordering Information, Accessories

Pallet Power Clamps, enclosed model



Application:

Clamping, holding, gripping and positioning of metal sheets and other parts, mainly in jigs and handling systems, particularly in situations where local accessibility does not allow the use of standard clamps.

Key areas of application:

Automotive manufacturing, sheet processing industry, jig and general mechanical engineering.

Features:

- Compact, enclosed aluminium body
- High holding torques
- Long life cycle
- Hard alloy rest at the clamping hook
- Toggle action mechanism
- Inductive sensing module with LED display
- Shielded design cover protects against welding spray

Optional:

- Adapter plate for lateral connection
- Sensing system integrated or attached to the cylinder

Model with inductive sensing			Max. holding force N [lbs]	Clamping force at 5 bar N [lbs]	Max. operating- pressure bar [psi]	Cylinder Ø mm [in]	Weight ~ kg [lbs]
Connector M12x1	Connector M12x1, with lead	Connector M8x1					
82U50-300B700	82U50-300B800	82U50-300C800	4000 [899]	4000 [899]	6 [87]	50 [1.97]	3,2 [7.04]

Accessories

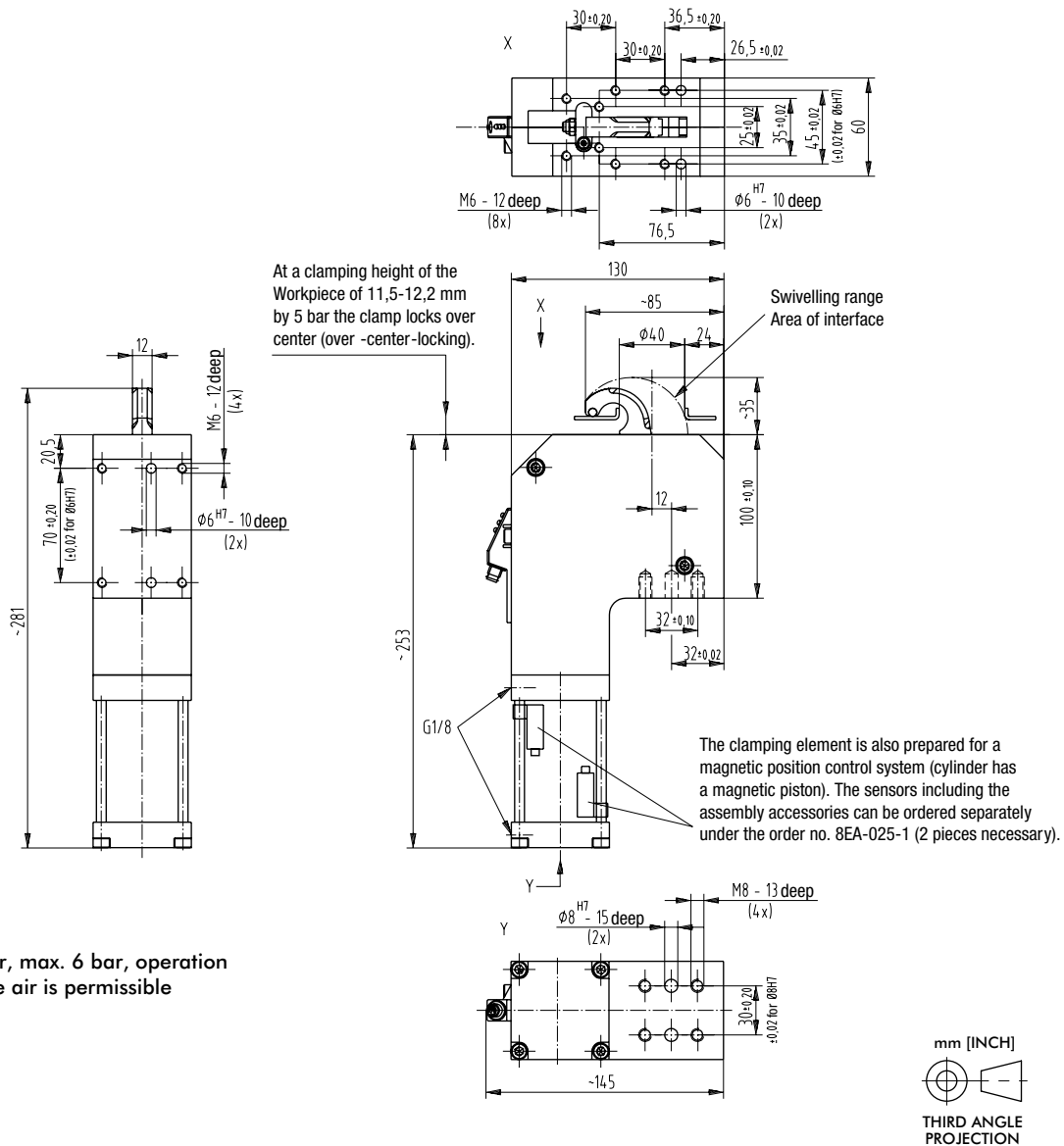
Specification		Order no. for structural component 82U50-300....	Comment
Connecting cable (1 connector socket & 5 m cable)			
B7 / B8 sensing system			
Connector socket M12x1, straight, 5-pin		8EL-002-1	
Connector socket M12x1, angular, 4-pin		8EL-003-1	
C8 sensing system			
Connector socket M8x1, straight, 4-pin		8EL-009-1	
Connector socket M8x1, angular, 4-pin		8EL-007-1	
Plug adapter M8 to M12		8EL-008-1	
Sensing system attached to cylinder		8EA-025-1	2 pcs required
Magnetic sensors plus installation material			

Major Spare Parts

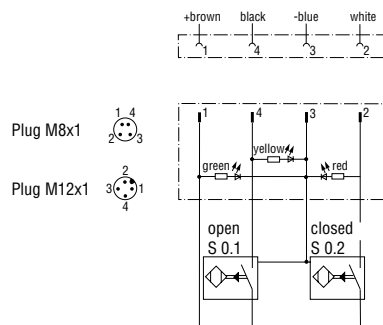
Specification	Order no. for structural component 82U50-300....
Pneumatic cylinder	8PW-007-1
Seal kit	8PW-007-1-00
Sensor box "B7" , connector plug M12x1	8EA-060-1
Sensor box "B8" , connector plug M12x1 with lead	8EA-031-1
Sensor box "C8" , connector plug M8x1	8EA-023-2
Spare part kit: Bushings, Bearings, pins	8KB-047-1

82U50-3 SERIES

Pneumatic Pin Clamps and Packages | Dimensions and Technical Information



Power clamp to be operated with external pneumatic one-way flow control valve only



Wiring diagram of electrical sensing systems B7, C8, B8

Sensing system immune to interference from d.c. arc welding and a.c. arc welding

- B7: inductive, sensor box, connector plug M12x1
- B8: inductive, sensor box, connector plug M12x1 with lead
- C8: inductive, sensor box, connector plug M8x1