

UNI lock double clamping module

Item description/product images



Description

Material:

Steel.

Version:

Contact surfaces case-hardened and ground.

Note:

UNI lock double clamp modules are particularly suitable for the direct clamping of workpieces. Workpieces with complex geometry can be completely machined on 4 and 5 sides.

UNI lock double clamp modules can be mounted in any position.

The high clamping forces are generated by the integrated spring package. (the unit clamps while not pressurised). Clamping is released pneumatically.

The following clamping forces are possible with the UNI lock clamping pin in

conjunction with M10, M12, M16 fastening screws:

Clamping force (M10) 35,000 N

Clamping force (M12) 50,000 N

Clamping force (M16) 75,000 N

Supplied with:

1 double clamp module incl. 3x pneumatic connections.

Technical data:

Opening pressure: 6 bar, lubricated air

Turbo pressure: 6 bar

Air connection: G 1/8

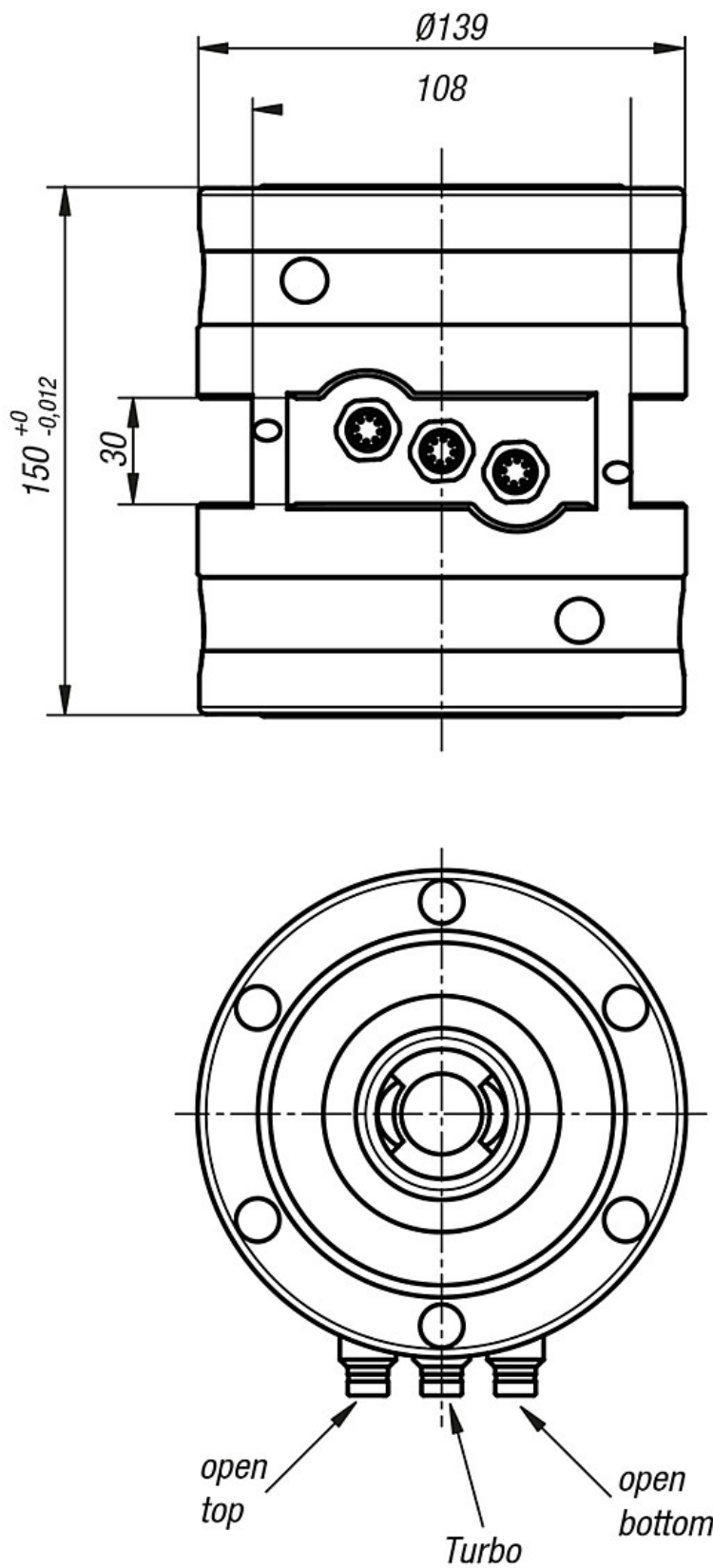
Repeat accuracy ≤ 0.005 mm

K1122



UNI lock double clamping module

Drawings



K1122

UNI lock double clamping module

Overview of items

UNI lock double clamping module

Order No.	Article description
K1122.1381500	DOUBLE CLAMPP UNILOCK MILD STEEL