

**K0971**

## UNI lock 5-axis shoulder screws for screwing clamping bolt to workpiece

Item description/product images



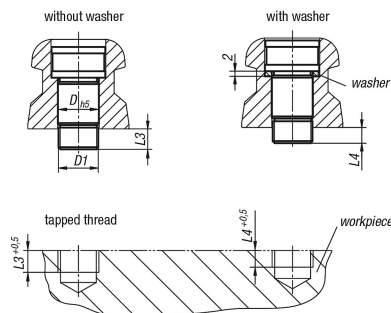
### Description

**Material:**  
Carbon steel.

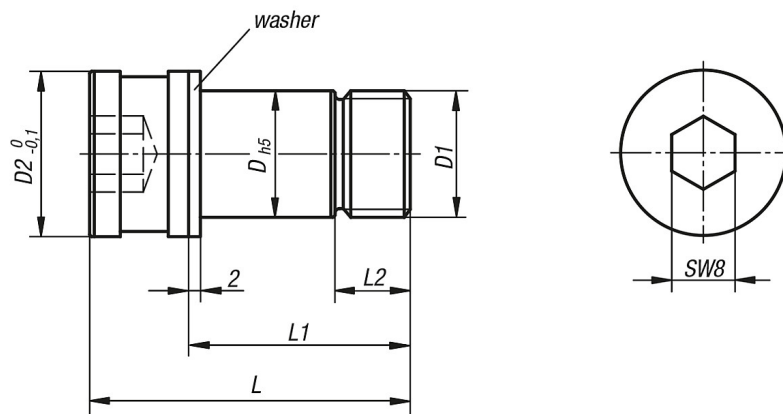
**Version:**  
Hardened surface.  
ground locating seat.

**Note:**

The UNI lock 5-axis locating bolts for fastening to workpieces are suitable for clamping and positioning workpieces. These locating bolts are passed through the clamping bolts for fastening to workpieces, screwed directly into the workpiece and positioned on the basic module or add-on module. The thread is used for fastening and positioning the workpiece.



### Drawings



### Overview of items

# UNI lock 5-axis shoulder screws for screwing clamping bolt to workpiece

## Overview of items

### UNI lock 5-axis shoulder screws for screwing clamping bolt to workpiece

Order No.	Version	D	D1	D2	L	L1	L2	L3	L4
<b>K0971.1210040</b>	mit Scheibe	12	M10x1,25	18	40,5	28	9,5	8	6
<b>K0971.12101040</b>	mit Scheibe	12	M10x1,5	18	40,5	28	9,5	8	6
<b>K0971.1212040</b>	mit Scheibe	12	M12x1,25	18	40,5	28	9,5	8	6
<b>K0971.12121040</b>	mit Scheibe	12	M12x1,75	18	40,5	28	9,5	8	6
<b>K0971.16121049</b>	ohne Scheibe	16	M12x1,75	20,9	50	37,5	18	17,5	15,5
<b>K0971.1612040</b>	mit Scheibe	16	M12x1,25	20,9	40,5	28	9,5	8	6
<b>K0971.16121040</b>	mit Scheibe	16	M12x1,75	20,9	40,5	28	9,5	8	6
<b>K0971.1616040</b>	mit Scheibe	16	M16x1,25	20,9	40,5	28	9,5	8	6
<b>K0971.16161040</b>	mit Scheibe	16	M16x2	20,9	40,5	28	9,5	8	6
<b>K0971.16161067</b>	ohne Scheibe	16	M16x2	20,9	67,5	55	25	35	33
<b>K0971.16161055</b>	ohne Scheibe	16	M16x2	20,9	56	43,5	24	23,5	21,5