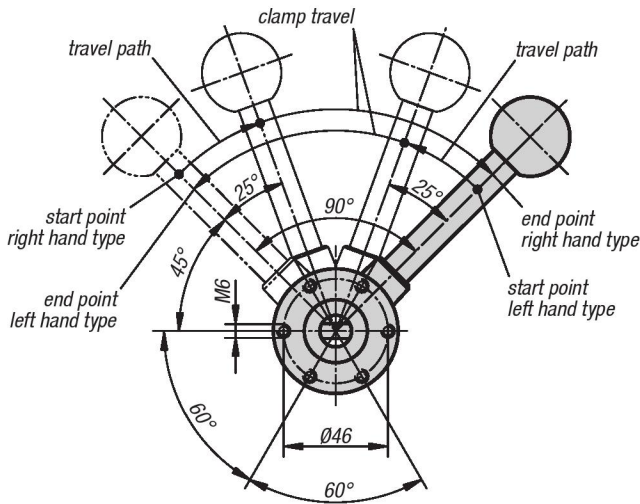




"Actima" Clamping Device

METRIC Parts

View from below



Material:

Steel;
housing thermoplastic;
ball knob Duroplast PF 31;
accessories steel.

Type:

Black oxide finish;
housing black;
ball knob red;
accessories black oxide finish.

Part Number Example:

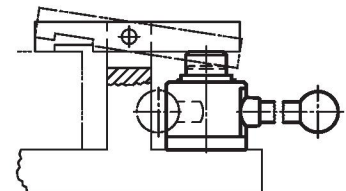
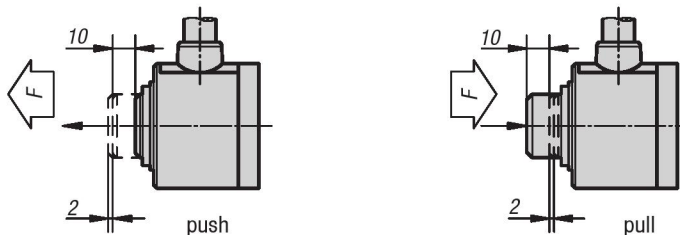
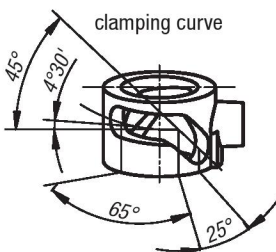
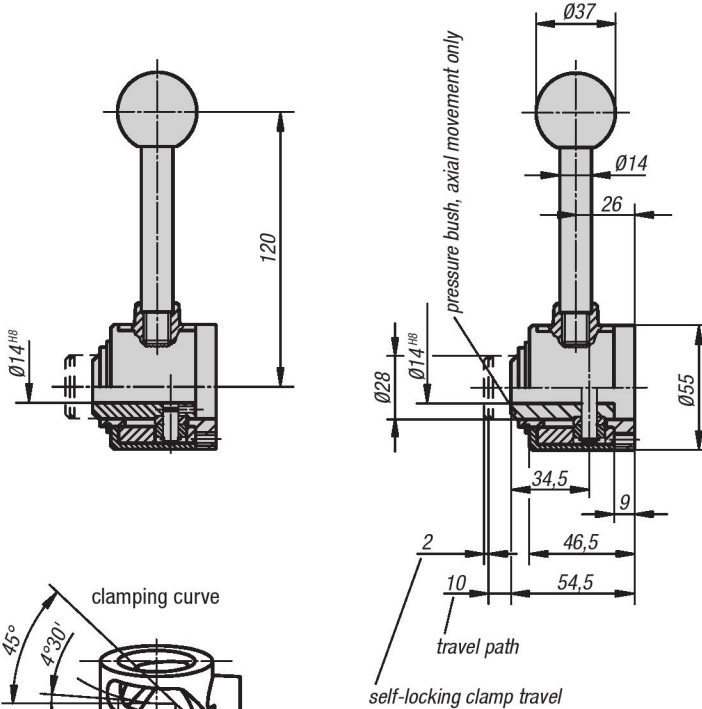
K0020.10

Note:

The travel path is 10 mm. Self-locking occurs in any position within only 2 mm of clamp travel. Thus workpieces with tolerances of up to 1.5 mm can be safely clamped. The "Actima" Clamping Device can be fitted in any horizontal or vertical position. Standard parts allow further applications. They are available as optional accessories. All parts of the cam system subject to heavy loads are case-hardened (pressure sleeve and accessories only if specified). The maximum permissible clamping force is approximately 4905 N.

drilled through

with transverse axis in bore



"Actima" Clamping Device

KIPP "Actima" Clamping Device with transverse axis in the hole, metric

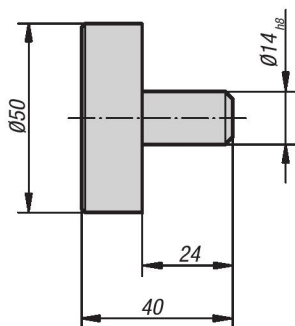
Item No.	Version
K0020.10	right-hand / push
K0020.15	right-hand / pull
K0020.20	left-hand / push
K0020.25	left-hand / pull

KIPP "Actima" Clamping Device with through hole, metric

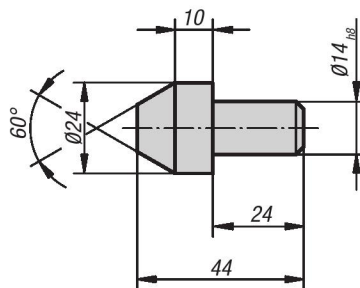
Item No.	Version
K0020.30	right-hand / push
K0020.35	right-hand / pull
K0020.40	left-hand / push
K0020.45	left-hand / pull

KIPP "Actima" Accessories, metric

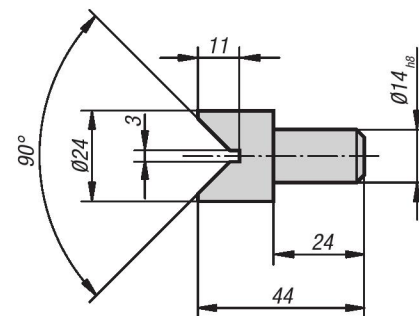
Item No.	Item code
K0020.02	DISK FOR ACTIMA
K0020.03	TAPER FOR ACTIMA
K0020.04	VEE-BLOCK FOR ACTIMA



disc



taper



prism