

# Straight and Thrust Bolts

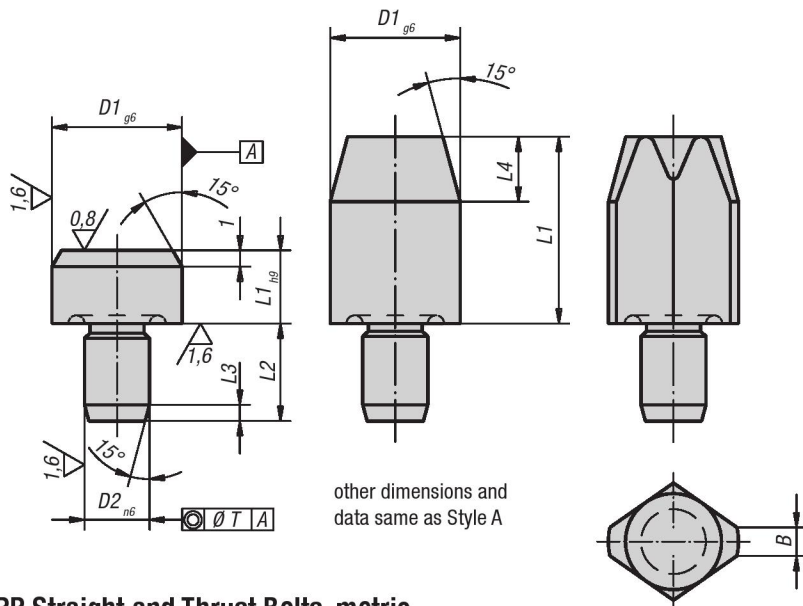
DIN 6321 (Edition 1973)



Style A  
thrust bolt

Style B  
cylindrical  
straight bolt

Style C  
flattened  
straight bolt



**Material:**  
Tool steel.

**Type:**  
Hardened and ground

**Part Number Example:**  
K0293.212

**Note:**  
Thrust Bolts Style A are supports for workpieces and fixtures.  
Straight Bolts Style B are for positioning workpieces and fixture components in reamed holes.  
The flattened Style C can be used to bridge tolerances in hole spacing or to secure the part to be positioned in one direction only.  
Styles A and B can also be used as hardened stops and as fixture feet.  
For similar bolts see K0352, K0353, K0354 and K0355.

## KIPP Straight and Thrust Bolts, metric

Item No.	Style	Version	D1	L1	D2	L2	L3	T
K0293.106	A	without centrebore	6	5	4	6	1,2	0,02
K0293.110	A	without centrebore	10	6	6	9	1,6	0,02
K0293.116	A	without centrebore	16	8	8	12	2	0,04
K0293.125	A	without centrebore	25	10	12	18	2,5	0,04

## KIPP Straight Bolts, short, metric

Item No. Style B	Item No. Style C	Version	D1	L1	D2	L2	L3	L4	B	T
K0293.206	K0293.406	short	6	7	4	6	1,2	4	-/1	0,02
K0293.208	K0293.408	short	8	10	6	9	1,6	6	-/1,6	0,02
K0293.210	K0293.410	short	10	10	6	9	1,6	6	-/2,5	0,02
K0293.212	K0293.412	short	12	10	6	9	1,6	6	-/2,5	0,02
K0293.216	K0293.416	short	16	13	8	12	2	8	-/3,5	0,04
K0293.220	K0293.420	short	20	15	12	18	2,5	9	-/5	0,04
K0293.225	K0293.425	short	25	15	12	18	2,5	9	-/5	0,04

## KIPP Straight Bolts, long, metric

Item No. Style B	Item No. Style C	Version	D1	L1	D2	L2	L3	L4	B	T
K0293.306	K0293.506	long	6	12	4	6	1,2	4	-/1	0,02
K0293.308	K0293.508	long	8	16	6	9	1,6	6	-/1,6	0,02
K0293.310	K0293.510	long	10	18	6	9	1,6	6	-/2,5	0,02
K0293.312	K0293.512	long	12	18	6	9	1,6	6	-/2,5	0,02
K0293.316	K0293.516	long	16	22	8	12	2	8	-/3,5	0,04
K0293.320	K0293.520	long	20	25	12	18	2,5	9	-/5	0,04
K0293.325	K0293.525	long	25	25	12	18	2,5	9	-/5	0,04

