

Palm Grips

in stainless steel similar to DIN 6335



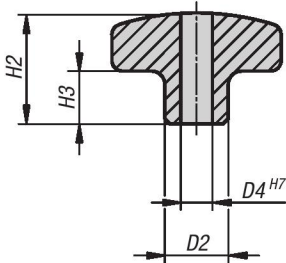
Material:
Stainless steel 1.4308

Type:
Ground and polished

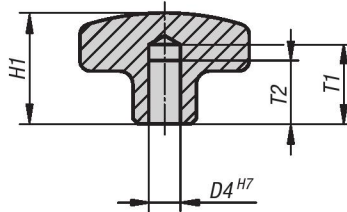
Part Number Example:
K0146.2032CM2

On request:
With external thread.

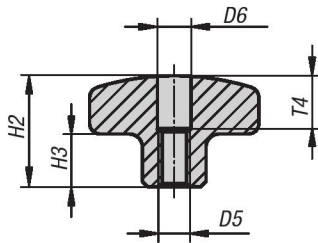
Style B
reamed through hole



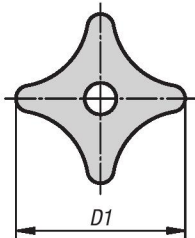
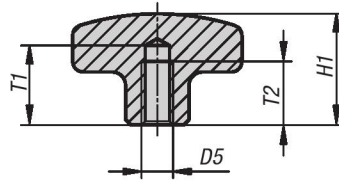
Style C
reamed blind hole



Style D
tapped with counter bore



Style E
tapped blind hole



KIPP Palm Grips in stainless steel similar to DIN 6335, inch

Item No. Style B	Item No. Style C	Version	D1	D2	D4	H1	H2	H3	T1	T2
K0146.2032CM2	K0146.3032CM2	polished	32	12	.250	-.21	20/-	10	-.15	-.12
K0146.2040CN2	K0146.3040CN2	polished	40	14	.312	-.26	25/-	13	-.18	-.15
K0146.2050C02	K0146.3050C02	polished	50	18	.375	-.34	32/-	17	-.21	-.18
K0146.2063CP2	K0146.3063CP2	polished	63	20	.500	-.42	40/-	21	-.25	-.22

KIPP Palm Grips in stainless steel similar to DIN 6335, inch

Item No. Style D	Item No. Style E	Version	D1	D2	D5	D6	H1	H2	H3	T1	T2	T4
K0146.4032A22	K0146.5032A22	polished	32	12	1/4-20	6.4/-	-.21	20/-	10	-.15	-.12	10/-
K0146.4040A32	K0146.5040A32	polished	40	14	5/16-18	8.4/-	-.26	25/-	13	-.18	-.15	12/-
K0146.4050A42	K0146.5050A42	polished	50	18	3/8-16	10.5/-	-.34	32/-	17	-.21	-.18	16/-
K0146.4063A52	K0146.5063A52	polished	63	20	1/2-13	13/-	-.42	40/-	21	-.25	-.22	20/-



Palm Grips

in stainless steel similar to DIN 6335

KIPP Palm Grips in stainless steel similar to DIN 6335, metric

Item No. Style B	Item No. Style C	Version	D1	D2	D4	H1	H2	H3	T1	T2
K0146.2032062	K0146.3032062	polished	32	12	6	-/21	20/-	10	-/15	-/12
K0146.2040082	K0146.3040082	polished	40	14	8	-/26	25/-	13	-/18	-/15
K0146.2050102	K0146.3050102	polished	50	18	10	-/34	32/-	17	-/21	-/18
K0146.2063122	K0146.3063122	polished	63	20	12	-/42	40/-	21	-/25	-/22

KIPP Palm Grips in stainless steel similar to DIN 6335, metric

Item No. Style D	Item No. Style E	Version	D1	D2	D5	D6	H1	H2	H3	T1	T2	T4
K0146.4032062	K0146.5032062	polished	32	12	M6	6,4/-	-/21	20/-	10	-/15	-/12	10/-
K0146.4040082	K0146.5040082	polished	40	14	M8	8,4/-	-/26	25/-	13	-/18	-/15	12/-
K0146.4050102	K0146.5050102	polished	50	18	M10	10,5/-	-/34	32/-	17	-/21	-/18	16/-
K0146.4063122	K0146.5063122	polished	63	20	M12	13/-	-/42	40/-	21	-/25	-/22	20/-