

## Swivel feet, levelling feet



# Technical Information for swivel feet

## Modular structure of a swivel foot

### Application:

Swivel feet are of modular design. The components can be individually combined to match the application. The swivel feet are applicable for use on machines, plants and even office furniture.

### Modular design:

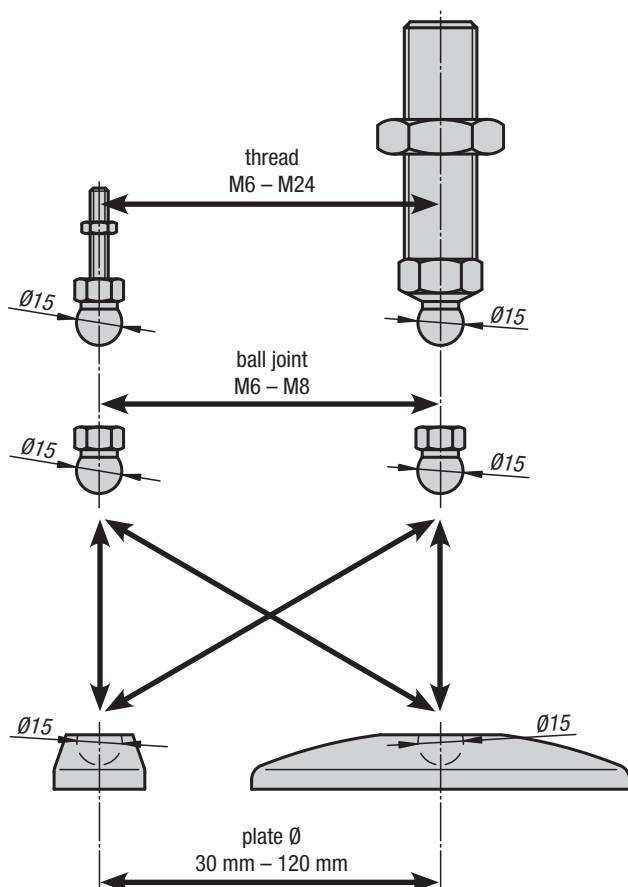
Swivel feet consist of two components - a plate and a threaded spindle or ball joint. **Any** plate can be combined with **any** threaded spindle or ball joint (see Fig. 1).

### Height of swivel foot:

Swivel feet always have a minimum height of  $H = 22.5$  mm independently of the plate, threaded spindle or ball joint size (see Fig. 2). When assembling with threaded spindle, the height of the complete swivel foot is calculated by adding 22.5 mm to the length of the threaded spindle + the height of the hexagon. (Total height of swivel foot =  $L + L_1 + 22.5$  mm).

When assembling with ball joint, the length  $L$  is void.

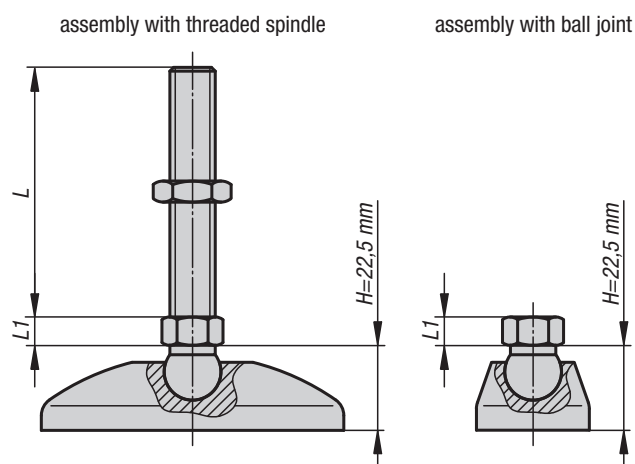
Fig. 1



### Assembly:

Using a plastic hammer, knock the ball of the threaded spindle or ball joint vertically into the swivel foot plate. If necessary, the two fastening holes (closed) in the swivel foot plate can be opened by simply punching them out to allow the swivel foot to be fastened to a base.

Fig. 2



### Inclination angle of threaded spindle or ball joint:



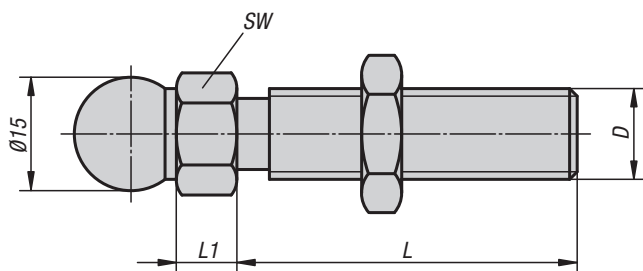
### Note for ordering:

If the swivel foot plate and the threaded spindle or ball joint are to be supplied assembled, please add the suffix “**assembled**” to the order number for the plate and the spindle or ball joint (see sample order on the relevant product page).

# K0421

## Swivel feet threaded spindles

steel or stainless steel



### Material:

Steel or stainless steel 1.4301.

### Version:

Steel blue passivated.

Stainless steel, bright.

### Sample order:

K0421.060151

K0421.060151 and K0415.1030 **assembled**

### Note for ordering:

If the threaded spindle and the plate are to be supplied assembled, please add the suffix **"assembled"** to the order number for the spindle and plate.  
(e.g. K0421.060151 and K0415.1030 **assembled**.)

### Note:

Swivel feet consist of a plate and a threaded spindle. Any plate can be combined with any threaded spindle. The height of the complete swivel foot is calculated by the length of the threaded spindle + height of hexagon + 22.5 mm. (Overall height of swivel foot = L + L1 + 22.5 mm).

### KIPP Swivel feet threaded spindles

| Order No.<br>Steel | Order No.<br>Stainless steel | D   | L   | L1   | SW | Load rating<br>max. kN |
|--------------------|------------------------------|-----|-----|------|----|------------------------|
| K0421.060151       | K0421.060152                 | M6  | 15  | 7,5  | 14 | 2                      |
| K0421.060301       | K0421.060302                 | M6  | 30  | 7,5  | 14 | 2                      |
| K0421.080401       | K0421.080402                 | M8  | 40  | 7,5  | 14 | 3,5                    |
| K0421.080801       | K0421.080802                 | M8  | 80  | 7,5  | 14 | 3,5                    |
| K0421.100451       | K0421.100452                 | M10 | 45  | 7,5  | 14 | 4,7                    |
| K0421.100701       | K0421.100702                 | M10 | 70  | 7,5  | 14 | 4,7                    |
| K0421.100901       | K0421.100902                 | M10 | 90  | 7,5  | 14 | 4,7                    |
| K0421.101251       | K0421.101252                 | M10 | 125 | 7,5  | 14 | 4,7                    |
| K0421.101501       | K0421.101502                 | M10 | 150 | 7,5  | 14 | 4,7                    |
| K0421.120451       | K0421.120452                 | M12 | 45  | 7,5  | 14 | 7,7                    |
| K0421.120661       | K0421.120662                 | M12 | 66  | 7,5  | 14 | 7,7                    |
| K0421.121001       | K0421.121002                 | M12 | 100 | 7,5  | 14 | 7,7                    |
| K0421.121251       | K0421.121252                 | M12 | 125 | 7,5  | 14 | 7,7                    |
| K0421.121501       | K0421.121502                 | M12 | 150 | 7,5  | 14 | 7,7                    |
| K0421.140661       | K0421.140662                 | M14 | 66  | 7,5  | 14 | 11,1                   |
| K0421.141001       | K0421.141002                 | M14 | 100 | 7,5  | 14 | 11,1                   |
| K0421.141251       | K0421.141252                 | M14 | 125 | 7,5  | 14 | 11,1                   |
| K0421.141501       | K0421.141502                 | M14 | 150 | 7,5  | 14 | 11,1                   |
| K0421.160661       | K0421.160662                 | M16 | 66  | 7,5  | 17 | 14,5                   |
| K0421.161001       | K0421.161002                 | M16 | 100 | 7,5  | 17 | 14,5                   |
| K0421.161251       | K0421.161252                 | M16 | 125 | 7,5  | 17 | 14,5                   |
| K0421.161501       | K0421.161502                 | M16 | 150 | 7,5  | 17 | 14,5                   |
| K0421.162001       | K0421.162002                 | M16 | 200 | 7,5  | 17 | 14,5                   |
| K0421.200851       | K0421.200852                 | M20 | 85  | 10,5 | 22 | 24,3                   |
| K0421.201001       | K0421.201002                 | M20 | 100 | 10,5 | 22 | 24,3                   |
| K0421.201251       | K0421.201252                 | M20 | 125 | 10,5 | 22 | 24,3                   |
| K0421.201501       | K0421.201502                 | M20 | 150 | 10,5 | 22 | 24,3                   |
| K0421.202001       | K0421.202002                 | M20 | 200 | 10,5 | 22 | 24,3                   |
| K0421.240851       | K0421.240852                 | M24 | 85  | 10,5 | 24 | 36,1                   |
| K0421.241001       | K0421.241002                 | M24 | 100 | 10,5 | 24 | 36,1                   |
| K0421.241251       | K0421.241252                 | M24 | 125 | 10,5 | 24 | 36,1                   |
| K0421.241501       | K0421.241502                 | M24 | 150 | 10,5 | 24 | 36,1                   |
| K0421.242001       | K0421.242002                 | M24 | 200 | 10,5 | 24 | 36,1                   |



# K0422

## Swivel feet ball joints

with internal thread



### Material:

Steel or stainless steel 1.4301.

### Version:

Steel blue passivated.

Stainless steel, bright.

### Sample order:

K0422.061

K0422.061 and K0415.1030 **assembled**

### Note for ordering:

If the ball joint and plate are to be supplied assembled, please add the suffix “**assembled**” to the order number for the ball joint and plate.

(e.g. K0422.061 and K0415.1030 **assembled**.)

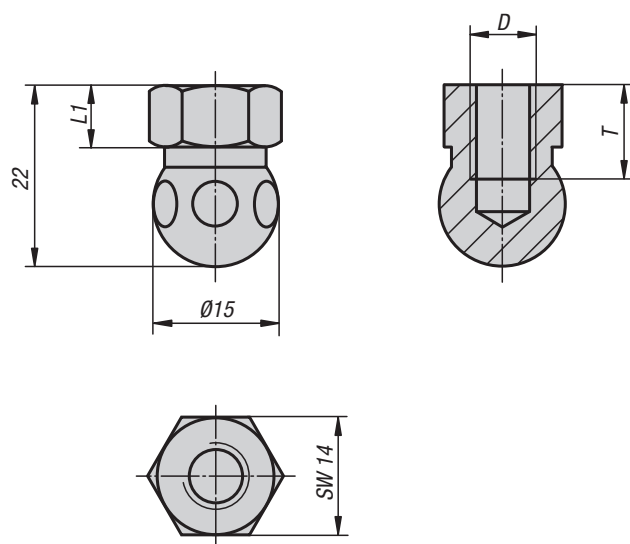
### Note:

For fastening swivel feet with standard screws.

Swivel feet consist of a ball joint and a plate. Any ball joint can be combined with any plate.

The height of the complete swivel foot is calculated by the height of the hexagon + 22.5 mm.

(Overall height of swivel foot = L1 + 22.5 mm).



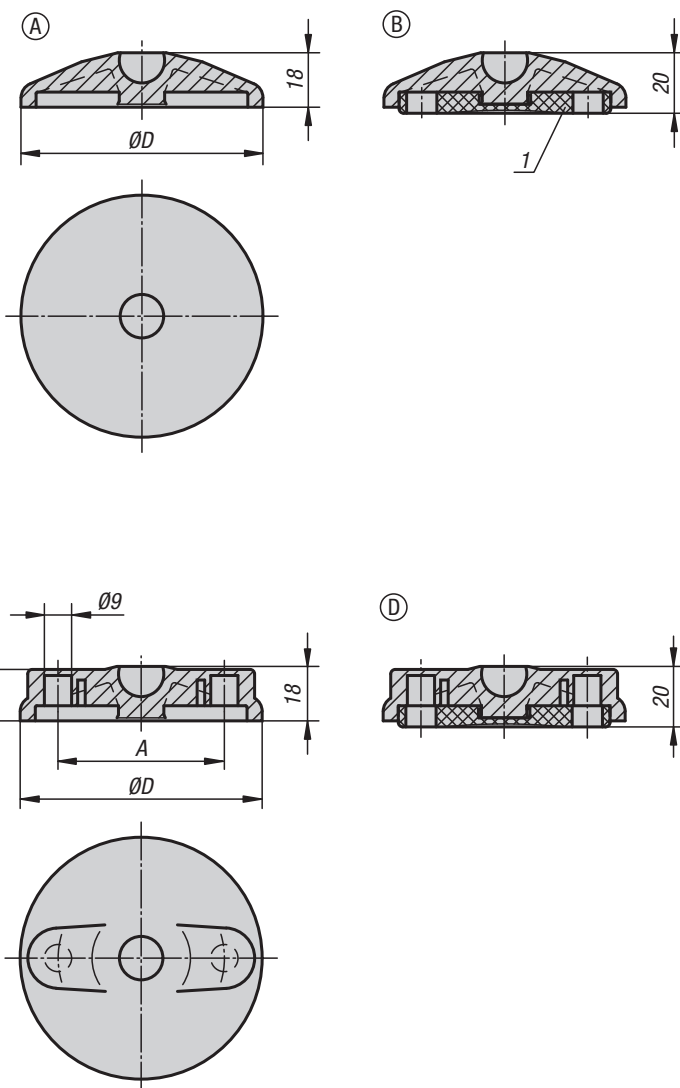
### KIPP Swivel feet ball joints with internal thread

| Order No.<br>Steel | Order No.<br>Stainless steel | D  | L1  | T  |
|--------------------|------------------------------|----|-----|----|
| K0422.061          | K0422.062                    | M6 | 7,5 | 10 |
| K0422.081          | K0422.082                    | M8 | 7,5 | 10 |

# K0415

## Swivel feet plates

plastic



### Material:

Plates, thermoplastic, glass bead reinforced.  
Anti-slip plate thermoplastic elastomer.

### Version:

black.

### Sample order:

K0415.1030

K0415.1030 and K0421.060151 **assembled**

### Note for ordering:

If the swivel foot plate and the threaded spindle or ball joint are to be supplied assembled, please add the suffix **"assembled"** to the order number for the plate and the spindle or ball joint.  
(e.g. K0415.1030 and K0421.060151 **"assembled"**.)

### Note:

Swivel feet consist of a plate and a threaded spindle or ball joint. Any plate can be combined with any threaded spindle or ball joint. The anti-slip plate absorbs vibrations and prevents the swivel foot slipping.  
For matching threaded spindles see K0421.  
For matching ball joints see K0422.

### Drawing reference:

1) From plate Ø 80

Form A without screw-on hole, without anti-slip plate

Form B without screw-on hole, with anti-slip plate

Form C with screw-on hole (closed), without anti-slip plate

Form D with screw-on hole (closed), with anti-slip plate

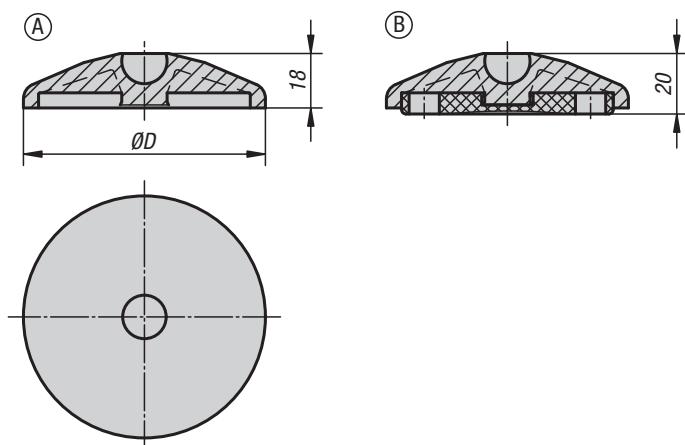
## KIPP Swivel feet plates, plastic

| Order No.<br>Form A | Order No.<br>Form B | D   | Load rating<br>max. kN |
|---------------------|---------------------|-----|------------------------|
| K0415.1030          | K0415.2030          | 30  | 5                      |
| K0415.1040          | K0415.2040          | 40  | 9                      |
| K0415.1045          | K0415.2045          | 45  | 9                      |
| K0415.1050          | K0415.2050          | 50  | 9                      |
| K0415.1060          | K0415.2060          | 60  | 9                      |
| K0415.1080          | K0415.2080          | 80  | 9                      |
| K0415.1100          | K0415.2100          | 100 | 9                      |

| Order No.<br>Form C | Order No.<br>Form D | D   | A  | Load rating<br>max. kN |
|---------------------|---------------------|-----|----|------------------------|
| K0415.3080          | K0415.4080          | 80  | 55 | 9                      |
| K0415.3100          | K0415.4100          | 100 | 74 | 9                      |
| K0415.3120          | K0415.4120          | 120 | 94 | 9                      |

# K0415

## Antistatic plate for swivel feet



### Material:

Plates, thermoplastic, glass bead reinforced.  
Anti-slip plate thermoplastic elastomer.

### Version:

black.

### Sample order:

K0415.11040

### Note for ordering:

If the swivel foot plate and the threaded spindle or ball joint are to be supplied assembled, please add the suffix “**assembled**” to the order number for the plate and the spindle or ball joint.  
(e.g. K0415.1030 and K0421.060151 “**assembled**”).

### Note:

Swivel feet consist of a plate and a threaded spindle or ball joint. Any plate can be combined with any threaded spindle or ball joint. The anti-slip plate absorbs vibrations and prevents the swivel foot slipping.  
For matching threaded spindles see K0421.  
For matching ball joints see K0422.

### Safety:

These ESD products can also be used for devices, components and protection systems in areas with high risk of explosion.  
Use of these ESD products prevents the occurrence of electrostatic spark discharges, eliminating the potential ignition of gases and dusts which could lead to explosions in enclosed spaces.  
Manufacturers and operators must use and conform to ATEX directives for the protection of persons working in areas with high risk of explosion.  
These ESD products are certified by TÜV-Süd in relation to their electrical discharge capability.

### Target groups:

Device manufacturers required to conform to ATEX product directive 2014/34/EU.  
Operators required to conform to ATEX worker protection directive 1999/92/EC.

### Drawing reference:

Form A without screw-on hole, without anti-slip plate  
Form B without screw-on hole, with anti-slip plate

### KIPP Antistatic plate for swivel feet

| Order No.   | Form | D  | Load rating<br>max. kN |
|-------------|------|----|------------------------|
| K0415.11040 | A    | 40 | 9                      |
| K0415.11050 | A    | 50 | 9                      |
| K0415.11060 | A    | 60 | 9                      |
| K0415.12040 | B    | 40 | 9                      |
| K0415.12050 | B    | 50 | 9                      |
| K0415.12060 | B    | 60 | 9                      |

Notes



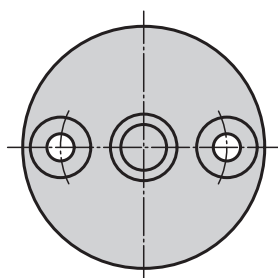
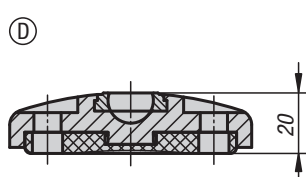
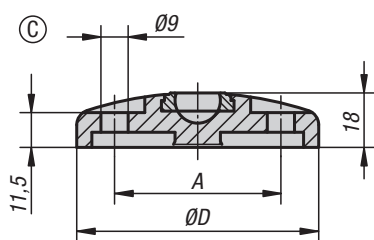
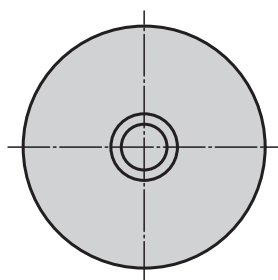
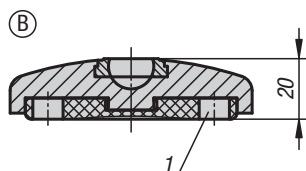
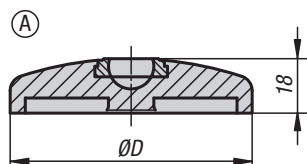
A large grid area for taking notes, consisting of a fine grid of small squares.



# K0416

## Swivel feet plates

die-cast zinc or stainless steel



### Material:

Plate die-cast zinc or stainless steel 1.4305.  
Anti-slip plate thermoplastic elastomer.

### Version:

Die-cast zinc plate, black powder-coated.  
Stainless steel plate, bright.

### Sample order:

K0416.10301

K0416.10301 and K0421.060151 **assembled**

### Note for ordering:

If the swivel foot plate and the threaded spindle or the ball joint are to be supplied assembled, please add the suffix "**assembled**" to the order number for the plate and the spindle or the ball joint.  
(e.g. K0416.10301 and K0421.060151 **assembled**).

### Note:

Swivel feet consist of a plate and a threaded spindle or ball joint. Any plate can be combined with any threaded spindle or ball joint. The anti-slip plate absorbs vibrations and prevents the swivel foot slipping.  
For matching threaded spindles see K0421.  
For matching ball joints see K0422.

### Drawing reference:

1) From plate Ø 80

Form A without screw-on hole, without anti-slip plate

Form B without screw-on hole, with anti-slip plate

Form C with screw-on hole (open), without anti-slip plate

Form D with screw-on hole (open), with anti-slip plate



**K0416**

# Swivel feet plates

die-cast zinc or stainless steel



## KIPP Swivel feet plates, die-cast zinc

| Order No.<br>Form A | Order No.<br>Form B | D   | Load rating<br>max. kN |
|---------------------|---------------------|-----|------------------------|
| K0416.10301         | K0416.20301         | 30  | 20                     |
| K0416.10401         | K0416.20401         | 40  | 30                     |
| K0416.10451         | K0416.20451         | 45  | 30                     |
| K0416.10501         | K0416.20501         | 50  | 30                     |
| K0416.10601         | K0416.20601         | 60  | 30                     |
| K0416.10801         | K0416.20801         | 80  | 30                     |
| K0416.11001         | K0416.21001         | 100 | 35                     |
| K0416.11201         | K0416.21201         | 120 | 35                     |

| Order No.<br>Form C | Order No.<br>Form D | D   | A  | Load rating<br>max. kN |
|---------------------|---------------------|-----|----|------------------------|
| K0416.30801         | K0416.40801         | 80  | 55 | 30                     |
| K0416.31001         | K0416.41001         | 100 | 74 | 35                     |
| K0416.31201         | K0416.41201         | 120 | 94 | 35                     |

## KIPP Swivel feet plates, stainless steel

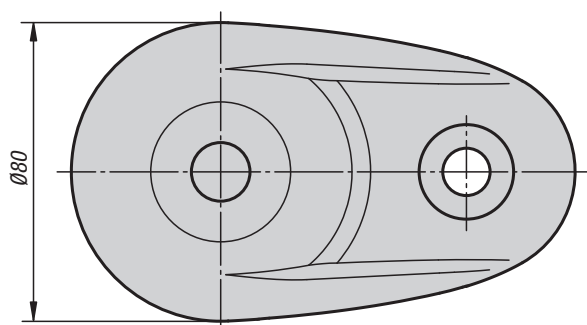
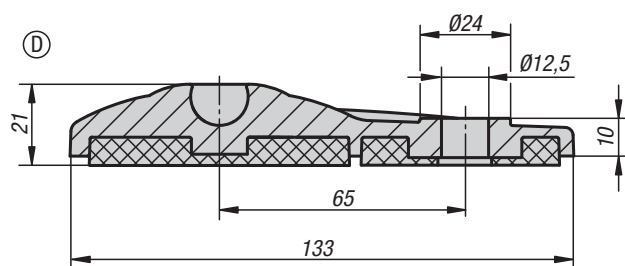
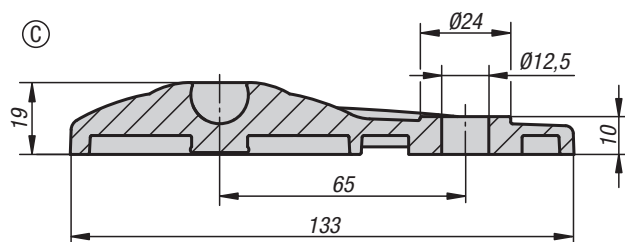
| Order No.<br>Form A | Order No.<br>Form B | D   | Load rating<br>max. kN |
|---------------------|---------------------|-----|------------------------|
| K0416.10302         | K0416.20302         | 30  | 20                     |
| K0416.10402         | K0416.20402         | 40  | 30                     |
| K0416.10452         | K0416.20452         | 45  | 30                     |
| K0416.10502         | K0416.20502         | 50  | 35                     |
| K0416.10602         | K0416.20602         | 60  | 35                     |
| K0416.10802         | K0416.20802         | 80  | 35                     |
| K0416.11002         | K0416.21002         | 100 | 40                     |
| K0416.11202         | K0416.21202         | 120 | 40                     |

| Order No.<br>Form C | Order No.<br>Form D | D   | A  | Load rating<br>max. kN |
|---------------------|---------------------|-----|----|------------------------|
| K0416.30802         | K0416.40802         | 80  | 55 | 35                     |
| K0416.31002         | K0416.41002         | 100 | 74 | 40                     |
| K0416.31202         | K0416.41202         | 120 | 94 | 40                     |

# K0654

## Swivel feet plates extended

plastic



### Material:

Plates, thermoplastic, fibreglass reinforced.  
Anti-slip plate thermoplastic elastomer.

### Version:

black.

### Sample order:

K0654.1030

K0654.1030 and K0421.060151 **assembled**

### Note for ordering:

If the swivel foot plate and the threaded spindle or ball joint are to be supplied assembled, please add the suffix **"assembled"** to the order number for the plate and the spindle or ball joint.  
(e.g. K0654.30803 and K0421.060151 **assembled**.)

### Note:

Swivel feet consist of a plate and a threaded spindle or ball joint. Any plate can be combined with any threaded spindle or ball joint. The anti-slip plate absorbs vibrations and prevents the swivel foot slipping.

For matching threaded spindles see K0421.

For matching ball joints see K0422.

### Drawing reference:

Form C with screw-on hole, without anti-slip plate

Form D with screw-on hole, with anti-slip plate



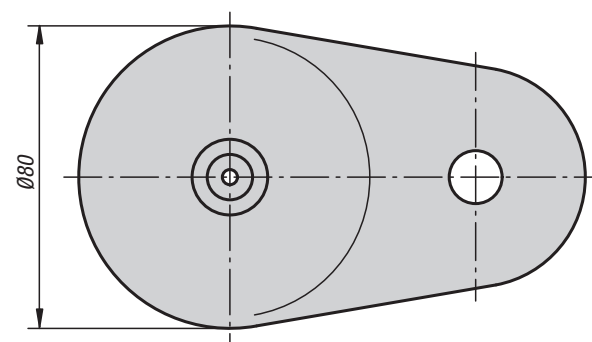
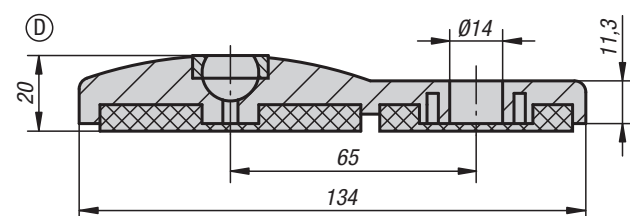
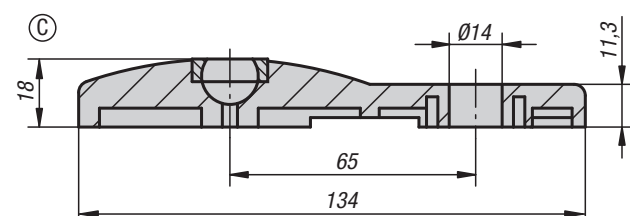
### KIPP Swivel feet plates extended, plastic

| Order No.   | Form | Load rating<br>max. kN |
|-------------|------|------------------------|
| K0654.30803 | C    | 10                     |
| K0654.40803 | D    | 10                     |

# K0417

## Swivel feet plates extended

die-cast zinc



### Material:

Plate die-cast zinc.

Anti-slip plate thermoplastic elastomer.

### Version:

Plate black powder-coated.

### Sample order:

K0417.30801

K0417.30801 and K0421.060151 **assembled**

### Note for ordering:

If the swivel foot plate and the threaded spindle or ball joint are to be supplied assembled, please add the suffix **"assembled"** to the order number for the plate and the spindle or ball joint.

(e.g. K0417.30801 and K0421.060151 **assembled**.)

### Note:

Swivel feet consist of a plate and a threaded spindle or ball joint. Any plate can be combined with any threaded spindle or ball joint. The anti-slip plate absorbs vibrations and prevents the swivel foot slipping.

For matching threaded spindles see K0421.

For matching ball joints see K0422.

### Drawing reference:

Form C with screw-on hole, without anti-slip plate

Form D with screw-on hole, with anti-slip plate

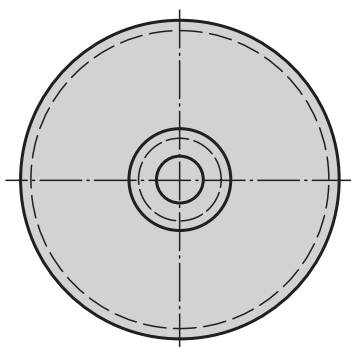
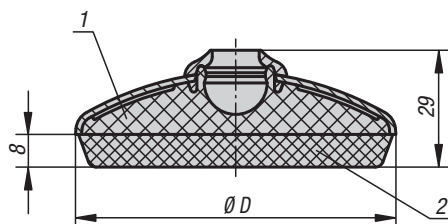
### KIPP Swivel feet plates extended, die-cast zinc

| Order No.   | Form | Load rating<br>max. kN |
|-------------|------|------------------------|
| K0417.30801 | C    | 30                     |
| K0417.40801 | D    | 30                     |

**K0418**

# Swivel feet plates

stainless steel



## Material:

Plates, stainless steel 1.4301.  
Core, thermoplastic PA.  
Rubber support TPE.

## Version:

Plate bright.  
Rubber support light grey with sealing lip, hardness 70 Shore A.  
Temp. range -20°C to +100°C.

## Sample order:

K0418.1060  
K0418.1060 and K0421.060152 **assembled**

## Note for ordering:

If the swivel foot plate and the threaded spindle or ball joint are to be supplied assembled, please add the suffix **“assembled”** to the order number for the plate and the spindle or ball joint. (e.g. K0418.1060 and K0421.060152 **assembled**.)

## Note:

The rubber support is joined with the stainless steel plate and the PA core by injection moulding. The rubber support is resistant to oil and water (up to 60 °C). In addition, it is furnished with antibacterial and antimicrobial protection and is thus outstandingly suited for sectors in the food industry.

Swivel feet consist of a plate and a threaded spindle or ball joint. Any plate can be combined with any threaded spindle or ball joint.

For matching threaded spindles see K0421.

For matching ball joints see K0422.

## Drawing reference:

- 1) PA-core
- 2) rubber base



## KIPP Swivel feet plates, stainless steel

| Order No.  | D    | Load rating<br>max. kN |
|------------|------|------------------------|
| K0418.1060 | 58,5 | 7                      |
| K0418.1080 | 78,5 | 7                      |
| K0418.1100 | 98,5 | 7                      |

# Technical information

## Swivel feet and plates with vibration absorption

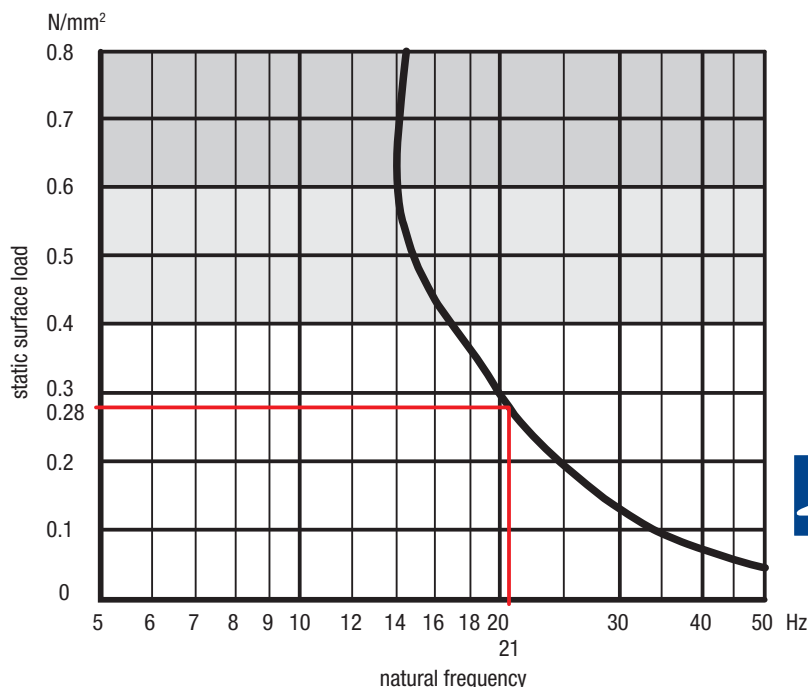
### Natural frequency:

Every sprung weight, such as a machine or piece of equipment, that is standing on swivel feet with vibration absorbers vibrates after an initial impetus at its own natural frequency (resonance frequency). In the diagram to the side (Fig. 1) the natural frequency of Sylomer V12 under pressure by various forces can be read. The optimum range of use is with a pressure of  $\leq 0.4$  N/mm. A maximum pressure of 0.6 N/mm should not be exceeded.

### Interference frequency:

The frequency emitted by a machine or a piece of equipment is known as its interference frequency. Effective vibration absorption is dependent on the interference frequency (the frequency to be absorbed) and the natural frequency of the absorption unit. The greater the difference in frequency between the natural frequency and the interference frequency, the better the absorption. An absorbing effect will only be achieved if the interference frequency is over  $\sqrt{2}$  times the natural frequency of the absorption unit.

Fig. 1



### Calculation example:

Swivel foot: M12, D1=30,5  
Loading: 300N

$$\text{Pressure: } \frac{F}{A} = \frac{300 \text{ N}}{529,5 \text{ mm}^2} = 0,57 \text{ N/mm}^2$$

$$> 0,4 \text{ N/mm}^2$$

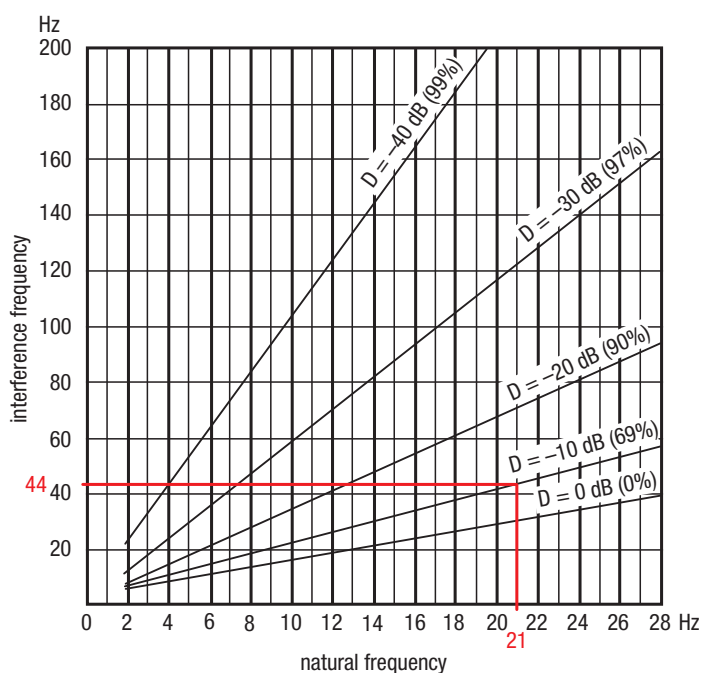
Swivel foot: M16, D1=40,5  
Loading: 300N

$$\text{Pressure: } \frac{F}{A} = \frac{300 \text{ N}}{1087,2 \text{ mm}^2} = 0,28 \text{ N/mm}^2$$

$$< 0,4 \text{ N/mm}^2$$

The M16 swivel foot is chosen since the pressure is  $\leq 0.4$  N/mm<sup>2</sup>. From Fig. 1, a pressure of **0.28 N/mm<sup>2</sup>** gives a natural frequency of **21 Hz**. With an interference frequency of **44 Hz** an absorption effect of 69% is achieved (Fig. 2).

Fig. 2



# K0419

## Swivel feet plates

with vibration absorption



### Material:

Plate die-cast zinc or stainless steel 1.4305.  
Damper plate PUR elastomere (Sylomer V12).

### Version:

Die-cast zinc plate, black powder-coated.  
Stainless steel plate, bright.  
Damper plate, grey, glued in, anti-slip.  
Temp. range -30 °C to +70 °C.

### Sample order:

K0419.20601  
K0419.20601 and K0421.060151 **assembled**

### Note for ordering:

If the swivel foot plate and the threaded spindle or ball joint are to be supplied assembled, please add the suffix **"assembled"** to the order number for the plate and the spindle or ball joint.  
(e.g. K0419.20601 and K0421.060151 **assembled**.)

### Note:

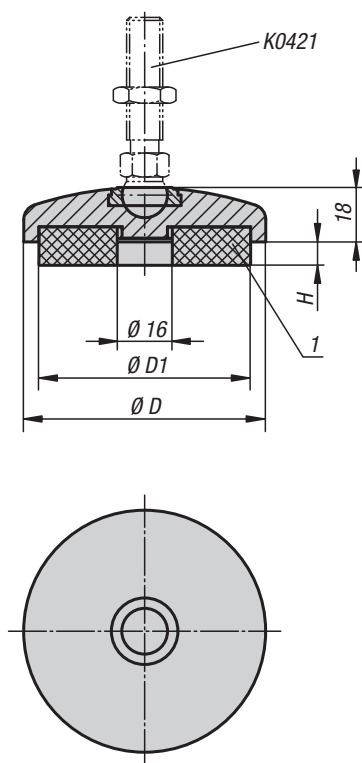
The load rating given in the table is a recommendation of the **permanent static** load up to which the absorption unit should be used. This static load corresponds to a surface pressure of 0.4 N/mm<sup>2</sup>, at which the material achieves its optimum absorption properties. Here it is taken into account that under dynamic demands an additional load, up to 0.6 N/mm<sup>2</sup> may occur. The damper plate absorbs vibrations and prevents the swivel foot slipping. Swivel feet consist of a plate and a threaded spindle or ball joint. Any plate can be combined with any threaded spindle or ball joint.

For matching threaded spindles see K0421.

For matching ball joints see K0422.

### Drawing reference:

1) damper plate



### KIPP Swivel feet plates, die-cast zinc

| Order No.   | D  | D1   | H<br>by 0 / 0.4 / 0.6<br>N/mm <sup>2</sup> | Load rating N<br>(by 0.4 N/mm <sup>2</sup> ) |
|-------------|----|------|--|--|
| K0419.20401 | 40 | 30,5 | 7 / 5,9 / 4,8                              | 62   |
| K0419.20501 | 50 | 40,5 | 7 / 5,9 / 4,8                              | 212  |
| K0419.20601 | 60 | 50   | 7 / 5,9 / 4,8                              | 433  |
| K0419.20801 | 80 | 68   | 7 / 5,9 / 4,8                              | 614  |

### KIPP Swivel feet plates, stainless steel

| Order No.   | D  | D1   | H<br>by 0 / 0.4 / 0.6<br>N/mm <sup>2</sup> | Load rating N<br>(by 0.4 N/mm <sup>2</sup> ) |
|-------------|----|------|--|--|
| K0419.20402 | 40 | 30,5 | 7 / 5,8 / 4,9                              | 212  |
| K0419.20502 | 50 | 40,5 | 7 / 5,8 / 4,9                              | 435  |
| K0419.20602 | 60 | 50   | 7 / 5,8 / 4,9                              | 705  |
| K0419.20802 | 80 | 68   | 7 / 5,8 / 4,9                              | 1372   |

**K0670**

# Machine feet

with vibration absorption

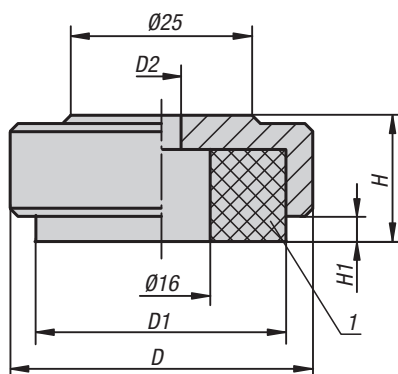

**Material:**

Plate steel.

Damper plate PUR elastomer (Sylomer V12).

**Version:**

Plate blue passivated.

Damper plate grey, glued in, anti-slip.

Temp. range -30 °C to +70 °C.

**Sample order:**

K0670.046

**Note:**

The load rating given in the table is a recommendation of the **permanent static** load up to which the damper plate should be used. This static load corresponds to a surface pressure of 0.4 N/mm<sup>2</sup>, at which the material reaches its optimum absorption properties. Here it is taken into account that under dynamic loading an additional load of up to 0.6 N/mm<sup>2</sup> may occur. The damper plate absorbs vibrations and prevents the machine foot slipping.

**Drawing reference:**

1) damper plate

**KIPP Machine feet with vibration absorption**

| Order No. | Main material | D  | D1   | D2  | H  | H1<br>by 0 / 0.4 / 0.6<br>N/mm <sup>2</sup> | Load rating N<br>(by 0.4 N/mm <sup>2</sup> ) |
|-----------|---------------|----|------|-----|----|---|--|
| K0670.036 | steel         | 36 | 30,5 | 5,5 | 15 | 4 / 2,8 / 1,9                               | 212  |
| K0670.046 | steel         | 46 | 40,5 | 6,6 | 17 | 4 / 2,8 / 1,9                               | 435  |
| K0670.056 | steel         | 56 | 50   | 9   | 19 | 4 / 2,8 / 1,9                               | 705  |
| K0670.074 | steel         | 74 | 68   | 9   | 21 | 4 / 2,8 / 1,9                               | 1372   |

# Technical information

## Levelling feet

### Modular structure of a levelling foot

#### Application:

Levelling feet are of modular design. The components can be individually combined to match the application. Levelling feet can be used on machines, plants and even office furniture.

#### Modular design:

The levelling feet consist of two components - a plate and a threaded spindle.

**Any** plate can be combined with **any** threaded spindle (see Fig. 1).

#### Levelling feet height:

Regardless of the plate or threaded spindle size, levelling feet always have a minimum height of  $H = 30$  mm (see Fig. 2). The height of the complete levelling foot is calculated from the length of the threaded spindle + 30 mm. (Total height of levelling foot =  $L + 30$  mm).

Fig. 1

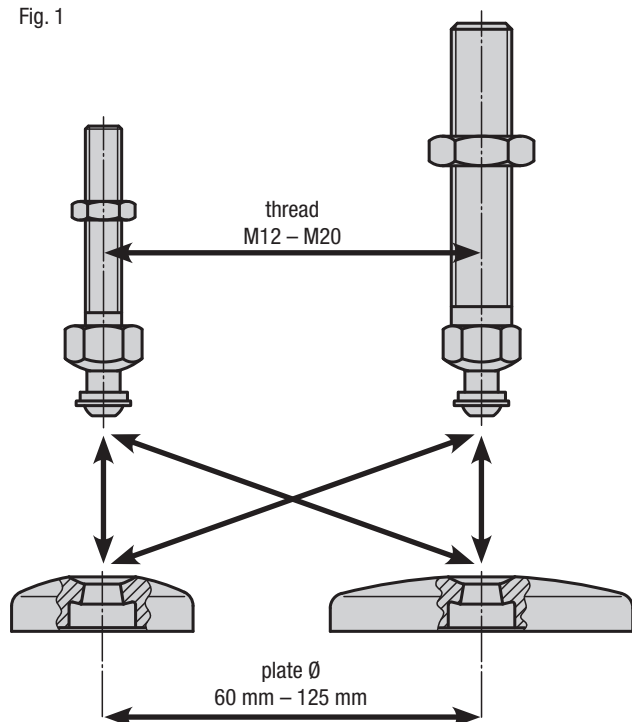
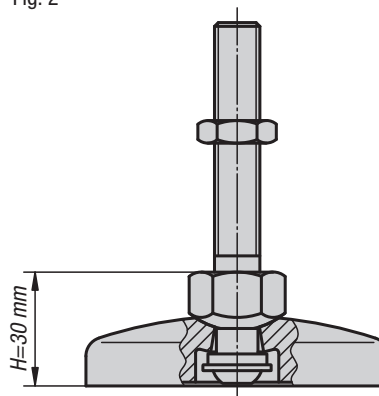


Fig. 2



#### Inclination angle of threaded spindle:



#### Assembly:

Insert the threaded spindle vertically into the levelling foot plate and fasten it from underneath with a spacer ring, washer and screw (no unintentional loosening of threaded spindle from the plate). If necessary, the two fastening holes (closed) in the levelling foot plate can be opened by simply punching them out to allow the levelling foot to be bolted to the floor.

#### Note for ordering:

If the levelling foot plate and the threaded spindle are to be supplied assembled, please add the suffix **"assembled"** to the order number for the plate and spindle (see sample order on the relevant product page).



**K0427**

# Levelling feet threaded spindles

steel or stainless steel


**Material:**

Steel or 1.4305 stainless steel

**Version:**

Steel blue passivated.  
Stainless steel, bright.

**Sample order:**

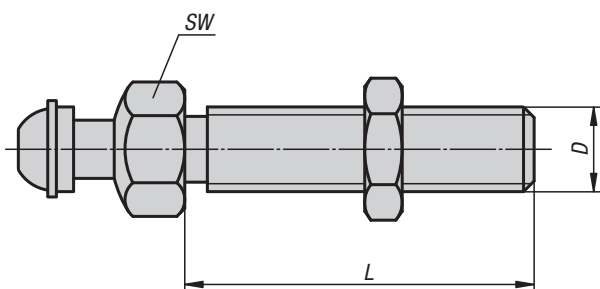
K0427.120661

K0427.120661 and K0423.1060 **assembled**
**Note for ordering:**

If the threaded spindle and the levelling foot plate are to be supplied assembled, please add the suffix **"assembled"** to the order number for the spindle and plate. (e.g. K0427.120661 and K0423.1060 **assembled**.)

**Note:**

Levelling feet consist of a plate and a threaded spindle. Any plate can be combined with any threaded spindle. The height of the complete levelling foot is calculated from the length of the threaded spindle + 30 mm. (Total height of levelling foot = L + 30 mm)



## KIPP Levelling feet threaded spindles steel or stainless steel

| Order No.<br>Steel | Order No.<br>Stainless steel | D   | L   | SW | Load rating<br>max. kN |
|--------------------|------------------------------|-----|-----|----|------------------------|
| K0427.120661       | K0427.120662                 | M12 | 66  | 22 | 7,7                    |
| K0427.121001       | K0427.121002                 | M12 | 100 | 22 | 7,7                    |
| K0427.121251       | K0427.121252                 | M12 | 125 | 22 | 7,7                    |
| K0427.121501       | K0427.121502                 | M12 | 150 | 22 | 7,7                    |
| K0427.160661       | K0427.160662                 | M16 | 66  | 22 | 14,5                   |
| K0427.161001       | K0427.161002                 | M16 | 100 | 22 | 14,5                   |
| K0427.161251       | K0427.161252                 | M16 | 125 | 22 | 14,5                   |
| K0427.161501       | K0427.161502                 | M16 | 150 | 22 | 14,5                   |
| K0427.162001       | K0427.162002                 | M16 | 200 | 22 | 14,5                   |
| K0427.201001       | K0427.201002                 | M20 | 100 | 22 | 24,3                   |
| K0427.201251       | K0427.201252                 | M20 | 125 | 22 | 24,3                   |
| K0427.201501       | K0427.201502                 | M20 | 150 | 22 | 24,3                   |
| K0427.202001       | K0427.202002                 | M20 | 200 | 22 | 24,3                   |

# K0423

## Levelling feet plates

plastic



### Material:

Plates, thermoplastic, fibreglass reinforced.  
Anti-slip plate thermoplastic elastomer.

### Version:

black.

### Sample order:

K0423.1060

K0423.1060 and K0427.120661 **assembled**

### Note for ordering:

If the levelling foot plate and the threaded spindle are to be supplied assembled, please add the suffix "**assembled**" to the order number for the plate and spindle. (e.g. K0423.1060 and K0427.120661 **assembled**.)

### Note:

Levelling feet consist of a plate and a threaded spindle.  
Any plate can be combined with any threaded spindle.  
The anti-slip plate absorbs vibrations and prevents the levelling foot slipping.  
For matching threaded spindles see K0427.

### Drawing reference:

1) From plate Ø 80

Form A without screw-on hole, without anti-slip plate

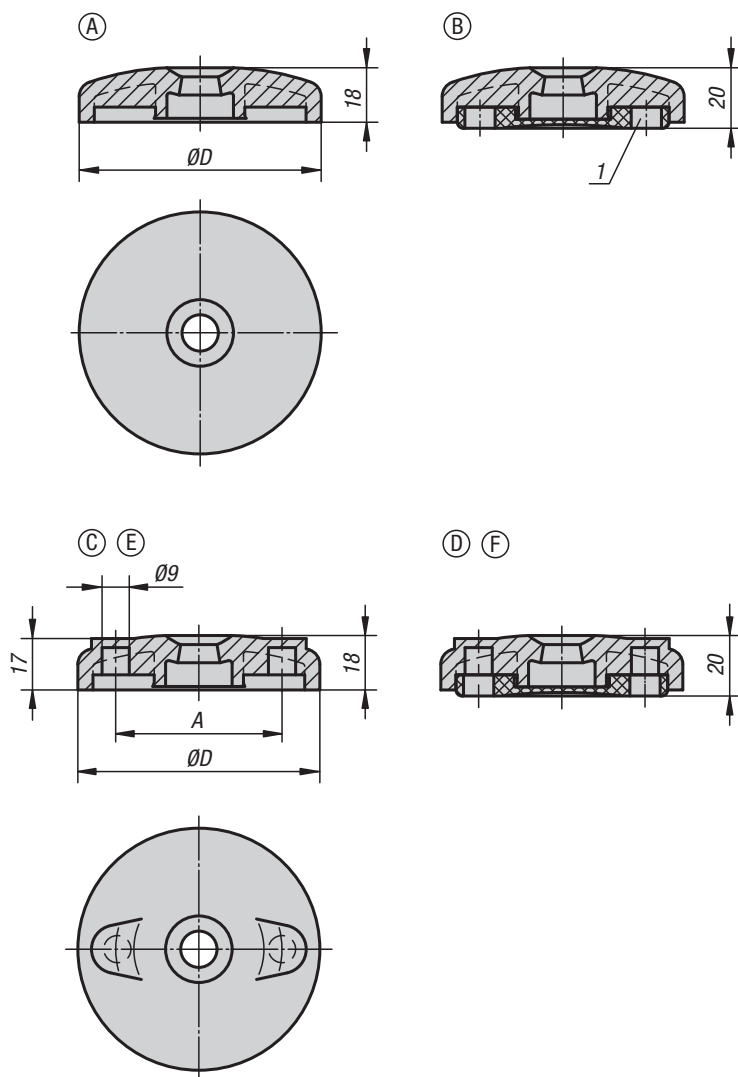
Form B without screw-on hole, with anti-slip plate

Form C with screw-on hole (closed), without anti-slip plate

Form D with screw-on hole (closed), with anti-slip plate

Form E with screw-on hole (open), without anti-slip plate

Form F with screw-on hole (open), with anti-slip plate



## KIPP Levelling feet plates plastic

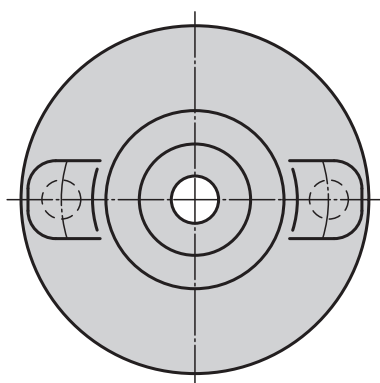
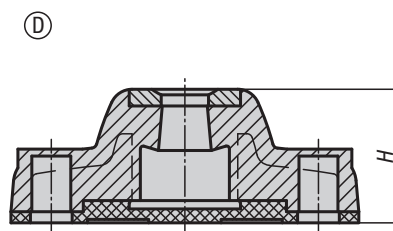
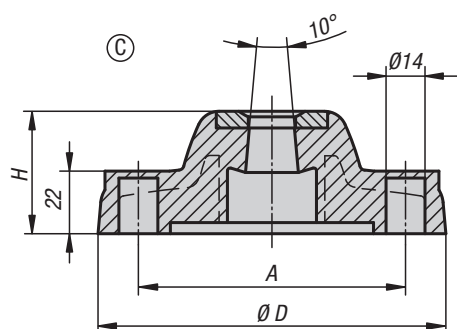
| Order No.<br>Form A | Order No.<br>Form B | D   | Load rating<br>max. kN |
|---------------------|---------------------|-----|------------------------|
| K0423.1060          | K0423.2060          | 60  | 12                     |
| K0423.1080          | K0423.2080          | 80  | 12                     |
| K0423.1100          | K0423.2100          | 100 | 12                     |

| Order No.<br>Form C | Order No.<br>Form D | Order No.<br>Form E | Order No.<br>Form F | D   | A  | Load rating<br>max. kN |
|---------------------|---------------------|---------------------|---------------------|-----|----|------------------------|
| K0423.3080          | K0423.4080          | K0423.5080          | K0423.6080          | 80  | 55 | 12                     |
| K0423.3100          | K0423.4100          | K0423.5100          | K0423.6100          | 100 | 74 | 12                     |

# K0424

## Levelling foot plates

plastic, heavy-duty version



### Material:

Plates, thermoplastic, fibreglass reinforced.  
Anti-slip plate thermoplastic elastomer.

### Version:

black.

### Sample order:

K0424.31251

K0424.31251 and K0427.120661 **assembled**

### Note for ordering:

If the levelling foot plate and the threaded spindle are to be supplied assembled, please add the suffix "**assembled**" to the order number for the plate and spindle.  
(e.g. K0424.31251 and K0427.120661 **assembled**.)



### Note:

Levelling feet consist of a plate and a threaded spindle. Any plate can be combined with any threaded spindle. The anti-slip plate absorbs vibrations and prevents the levelling foot slipping. For matching threaded spindles see K0427.

### Drawing reference:

Form C with screw-on hole (closed), without anti-slip plate  
Form D with screw-on hole (closed), with anti-slip plate

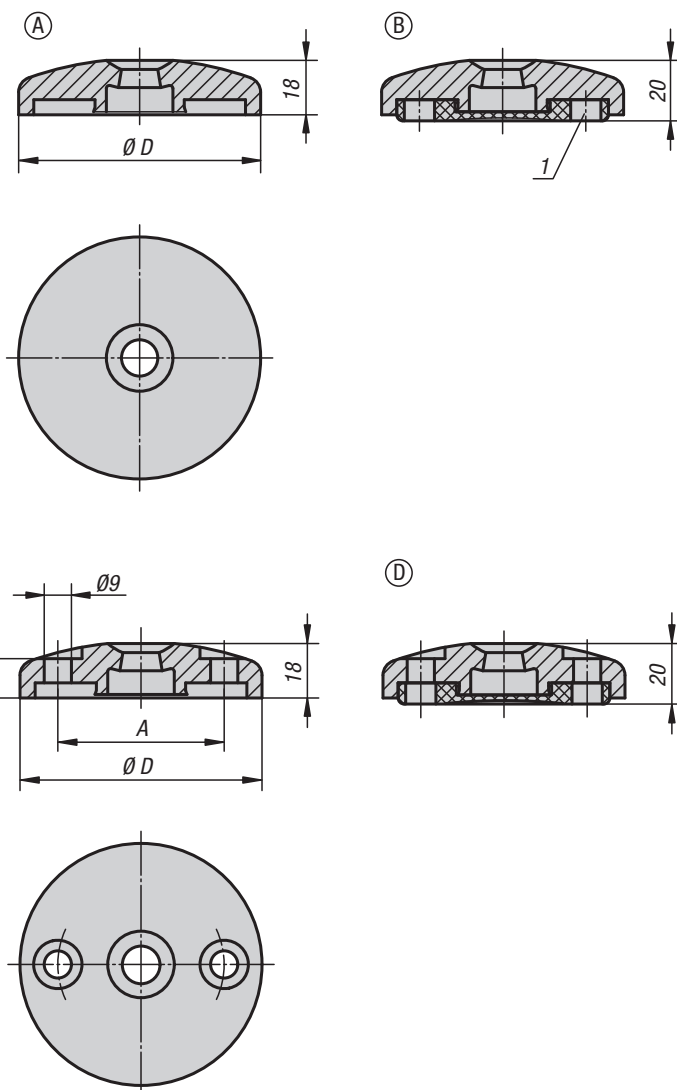
## KIPP Levelling foot plates, plastic, heavy-duty version

| Order No.   | Form | D   | A   | H  | Load rating<br>max. kN |
|-------------|------|-----|-----|----|------------------------|
| K0424.31251 | C    | 125 | 96  | 44 | 18                     |
| K0424.31751 | C    | 175 | 135 | 45 | 25                     |
| K0424.41251 | D    | 125 | 96  | 48 | 18                     |
| K0424.41751 | D    | 175 | 135 | 49 | 25                     |

# K0425

## Levelling feet plates

die-cast zinc or stainless steel



### Material:

Plate die-cast zinc or stainless steel 1.4305.  
Anti-slip plate thermoplastic elastomer.

### Version:

Die-cast zinc plate, black powder-coated.  
Stainless steel plate, bright.

### Sample order:

K0425.10601

K0425.10601 and K0427.120661 **assembled**

### Note for ordering:

If the levelling foot plate and the threaded spindle are to be supplied assembled, please add the suffix "**assembled**" to the order number for the plate and spindle.  
(e.g. K0425.10601 and K0427.120661 **assembled**).

### Note:

Levelling feet consist of a plate and a threaded spindle. Any plate can be combined with any threaded spindle.  
The anti-slip plate absorbs vibrations and prevents the levelling foot slipping.  
For matching threaded spindles see K0427.

### Drawing reference:

1) From plate Ø 80

Form A without screw-on hole, without anti-slip plate

Form B without screw-on hole, with anti-slip plate

Form C with screw-on hole (open), without anti-slip plate

Form D with screw-on hole (open), with anti-slip plate

# Levelling feet plates

die-cast zinc or stainless steel



## KIPP Levelling feet plates die-cast zinc

| Order No.<br>Form A | Order No.<br>Form B | D   | Load rating<br>max. kN |
|---------------------|---------------------|-----|------------------------|
| K0425.10401         | -                   | 40  | 20                     |
| K0425.10451         | -                   | 45  | 25                     |
| K0425.10501         | -                   | 50  | 25                     |
| K0425.10601         | K0425.20601         | 60  | 35                     |
| K0425.10801         | K0425.20801         | 80  | 35                     |
| K0425.11001         | K0425.21001         | 100 | 35                     |
| K0425.11201         | K0425.21201         | 120 | 35                     |

| Order No.<br>Form C | Order No.<br>Form D | D   | A  | Load rating<br>max. kN |
|---------------------|---------------------|-----|----|------------------------|
| K0425.30801         | K0425.40801         | 80  | 55 | 35                     |
| K0425.31001         | K0425.41001         | 100 | 74 | 35                     |

## KIPP Levelling feet plates stainless steel

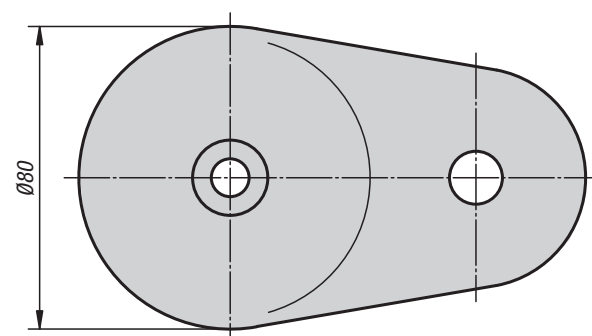
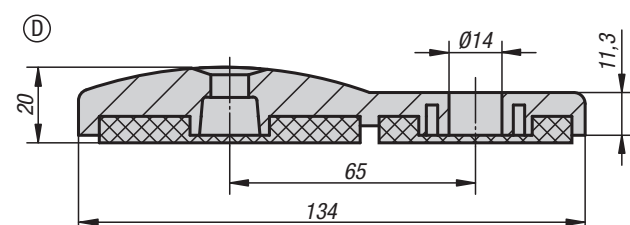
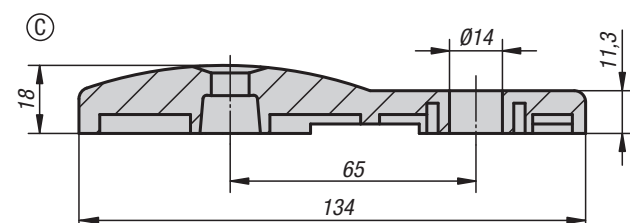
| Order No.<br>Form A | Order No.<br>Form B | D   | Load rating<br>max. kN |
|---------------------|---------------------|-----|------------------------|
| K0425.10602         | K0425.20602         | 60  | 45                     |
| K0425.10802         | K0425.20802         | 80  | 45                     |
| K0425.11002         | K0425.21002         | 100 | 45                     |

| Order No.<br>Form C | Order No.<br>Form D | D   | A  | Load rating<br>max. kN |
|---------------------|---------------------|-----|----|------------------------|
| K0425.30802         | K0425.40802         | 80  | 55 | 45                     |
| K0425.31002         | K0425.41002         | 100 | 74 | 45                     |

# K0426

## Levelling feet plates extended

die-cast zinc



### Material:

Plate die-cast zinc.

Anti-slip plate thermoplastic elastomer.

### Version:

Plate black powder-coated.

### Sample order:

K0426.30801

K0426.30801 and K0427.120661 **assembled**

### Note for ordering:

If the levelling foot plate and the threaded spindle are to be supplied assembled, please add the suffix **"assembled"** to the order number for the plate and spindle.

(e.g. K0426.30801 and K0427.120661 **assembled**.)

### Note:

Levelling feet consist of a plate and a threaded spindle. Any plate can be combined with any threaded spindle. The anti-slip plate absorbs vibrations and prevents the levelling foot slipping.

For matching threaded spindles see K0427.

### Drawing reference:

Form C with screw-on hole, without anti-slip plate

Form D with screw-on hole, with anti-slip plate

## KIPP Levelling feet plates extended die-cast zinc

| Order No.   | Form | Load rating<br>max. kN |
|-------------|------|------------------------|
| K0426.30801 | C    | 35                     |
| K0426.40801 | D    | 35                     |

Notes



A large grid area for taking notes, consisting of a fine grid of small squares.



# Technical information ECO-Line levelling feet

## Modular structure of an ECO-Line levelling foot

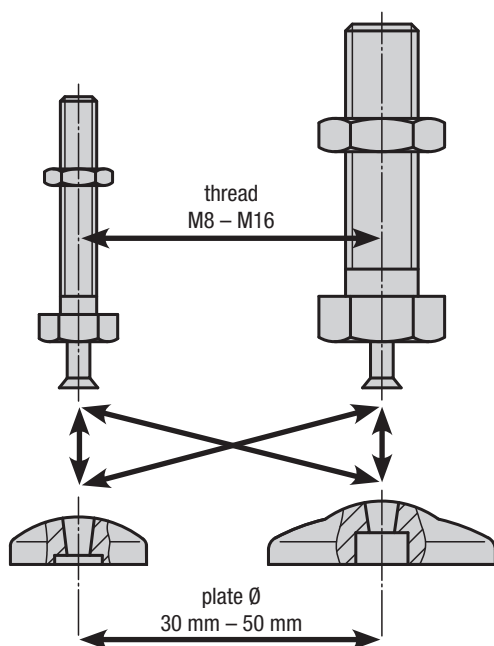
### Application:

ECO-Line levelling feet are of modular design. The components can be individually combined to match the application. However, the threaded spindle is not screwed but pressed in permanently. The levelling feet are used for a wide range of machines, plants and even office furniture.

### Modular design:

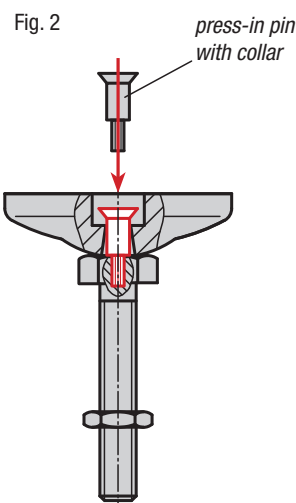
The levelling feet consist of two components - a plate and a threaded spindle. **Any** plate can be combined with **any** threaded spindle (see Fig. 1).

Fig. 1



### Assembly:

Place levelling foot plate on threaded spindle and press pin in up to collar (threaded spindle cannot be inadvertently removed from plate).



Inclination angle of threaded spindle:



### Note for ordering:

If the levelling foot plate and the threaded spindle are to be supplied assembled, please add the suffix **“assembled”** to the order number for the plate and spindle (see sample order on the relevant product page).



# Levelling feet ECO-Line threaded spindles

steel or stainless steel


**Material:**

Steel or 1.4305 stainless steel

**Version:**

Steel blue passivated.  
Stainless steel, bright.

**Sample order:**

K0429.101201

K0429.101201 and K0428.10301 **assembled**

**Note for ordering:**

If the threaded spindle and the levelling foot plate are to be supplied assembled, please add the suffix **"assembled"** to the order number for the spindle and plate.  
(e.g. K0429.080251 and K0428.10301 **assembled**.)

**Note:**

ECO-Line levelling feet consist of a threaded spindle and a plate. Any threaded spindle can be combined with any plate.



## KIPP Levelling feet ECO-Line threaded spindles steel or stainless steel

| Order No.<br>Steel | Order No.<br>Stainless steel | D   | L   | L1    | SW | Load rating<br>max. kN |
|--------------------|------------------------------|-----|-----|-------|----|------------------------|
| K0429.080251       | K0429.080252                 | M8  | 25  | 29,5  | 13 | 3,5                    |
| K0429.080401       | K0429.080402                 | M8  | 40  | 44,5  | 13 | 3,5                    |
| K0429.080501       | K0429.080502                 | M8  | 50  | 54,5  | 13 | 3,5                    |
| K0429.080701       | K0429.080702                 | M8  | 70  | 74,5  | 13 | 3,5                    |
| K0429.080801       | K0429.080802                 | M8  | 80  | 84,5  | 13 | 3,5                    |
| K0429.081001       | K0429.081002                 | M8  | 100 | 104,5 | 13 | 3,5                    |
| K0429.081201       | K0429.081202                 | M8  | 120 | 124,5 | 13 | 3,5                    |
| K0429.100251       | K0429.100252                 | M10 | 25  | 30    | 17 | 4,7                    |
| K0429.100401       | K0429.100402                 | M10 | 40  | 45    | 17 | 4,7                    |
| K0429.100501       | K0429.100502                 | M10 | 50  | 55    | 17 | 4,7                    |
| K0429.100701       | K0429.100702                 | M10 | 70  | 75    | 17 | 4,7                    |
| K0429.100801       | K0429.100802                 | M10 | 80  | 85    | 17 | 4,7                    |
| K0429.101001       | K0429.101002                 | M10 | 100 | 105   | 17 | 4,7                    |
| K0429.101201       | K0429.101202                 | M10 | 120 | 125   | 17 | 4,7                    |
| K0429.120251       | K0429.120252                 | M12 | 25  | 31    | 19 | 7,7                    |
| K0429.120401       | K0429.120402                 | M12 | 40  | 46    | 19 | 7,7                    |
| K0429.120501       | K0429.120502                 | M12 | 50  | 56    | 19 | 7,7                    |
| K0429.120701       | K0429.120702                 | M12 | 70  | 76    | 19 | 7,7                    |
| K0429.120801       | K0429.120802                 | M12 | 80  | 86    | 19 | 7,7                    |
| K0429.121001       | K0429.121002                 | M12 | 100 | 106   | 19 | 7,7                    |
| K0429.121201       | K0429.121202                 | M12 | 120 | 126   | 19 | 7,7                    |
| K0429.160501       | K0429.160502                 | M16 | 50  | 58,5  | 24 | 14,5                   |
| K0429.161001       | K0429.161002                 | M16 | 100 | 108,5 | 24 | 14,5                   |
| K0429.161501       | K0429.161502                 | M16 | 150 | 158,5 | 24 | 14,5                   |

# K0428

## Levelling feet plates ECO-Line

die-cast zinc, stainless steel or plastic



### Material:

Plate thermoplastic, die-cast zinc or stainless steel 1.4305.

Anti-slip plate thermoplastic elastomer.

### Version:

Thermoplastic plate black.

Die-cast zinc plate blue galvanized.

Stainless steel plate bright.

### Sample order:

K0428.10303

K0428.10303 and K0429.080801 **assembled**

### Note for ordering:

If the levelling foot plate and the threaded spindle are to be supplied assembled, please add the suffix **"assembled"** to the order number for the plate and spindle.

(e.g. K0428.10303 and K0429.080801 **"assembled"**.)

### Note:

ECO-Line levelling feet consist of a plate and a threaded spindle. Any plate can be combined with any threaded spindle.

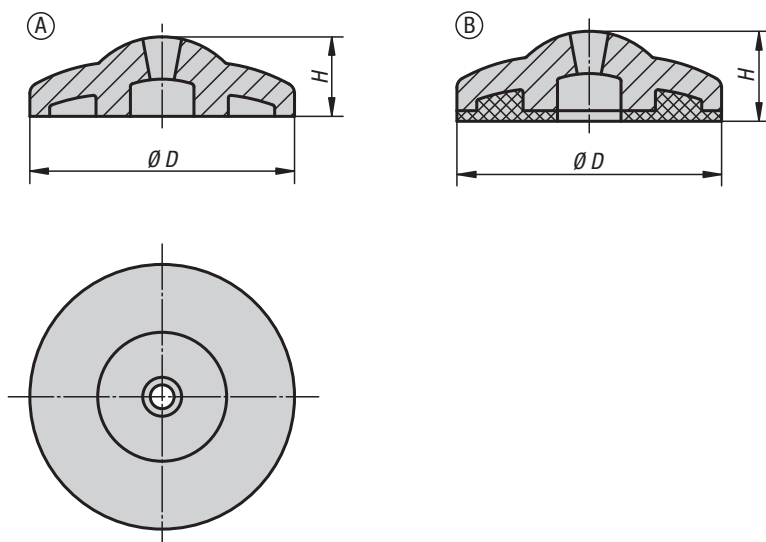
The anti-slip plate absorbs vibrations and prevents the levelling foot slipping.

For matching threaded spindles see K0429.

### Drawing reference:

Form A without anti-slip plate

Form B with anti-slip plate



### KIPP Levelling feet plates ECO-Line die-cast zinc

| Order No.   | Form | D  | H    | Load rating<br>max. kN |
|-------------|------|----|------|------------------------|
| K0428.10301 | A    | 30 | 11,5 | 16                     |
| K0428.10401 | A    | 40 | 12   | 18                     |
| K0428.10501 | A    | 50 | 14,5 | 20                     |
| K0428.20301 | B    | 30 | 13,5 | 16                     |
| K0428.20401 | B    | 40 | 14,5 | 18                     |
| K0428.20501 | B    | 50 | 17,5 | 20                     |

**K0428**

# Levelling feet plates ECO-Line

die-cast zinc, stainless steel or plastic



## KIPP Levelling feet plates ECO-Line stainless steel

| Order No.   | Form | D  | H    | Load rating<br>max. kN |
|-------------|------|----|------|------------------------|
| K0428.10302 | A    | 30 | 11,5 | 22                     |
| K0428.10402 | A    | 40 | 12   | 24                     |
| K0428.10502 | A    | 50 | 14,5 | 26                     |
| K0428.20302 | B    | 30 | 13,5 | 22                     |
| K0428.20402 | B    | 40 | 14,5 | 24                     |
| K0428.20502 | B    | 50 | 17,5 | 26                     |

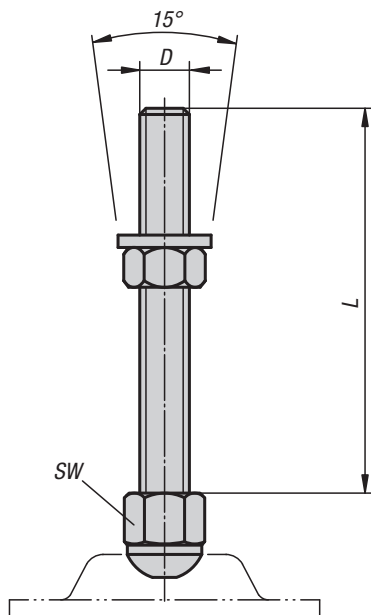
## KIPP Levelling feet plates ECO-Line plastic

| Order No.   | Form | D  | H    | Load rating<br>max. kN |
|-------------|------|----|------|------------------------|
| K0428.10303 | A    | 30 | 11,5 | 15                     |
| K0428.10403 | A    | 40 | 12   | 15                     |
| K0428.10503 | A    | 50 | 14,5 | 15                     |
| K0428.20303 | B    | 30 | 13,5 | 15                     |
| K0428.20403 | B    | 40 | 14,5 | 15                     |
| K0428.20503 | B    | 50 | 17,5 | 15                     |

# K0669

## Levelling feet threaded spindles

steel or stainless steel



### Material:

Steel or stainless steel 1.4301.

### Version:

Steel galvanized.

Stainless steel bright.

### Sample order:

K0669.080501

K0669.080501 and K0672.10801 **assembled**

### Note for ordering:

If the levelling foot plate and the threaded spindle are to be supplied assembled, please add the suffix **“assembled”** to the order number for the plate and spindle.

(e.g. K0669.080501 and K0672.10801 **assembled**).

### Note:

Levelling feet consist of a plate and a threaded spindle. Any threaded spindle can be combined with any plate.

## KIPP Levelling feet threaded spindles steel or stainless steel

| Order No.<br>Steel | Order No.<br>Stainless steel | D   | L   | SW | Load rating<br>max. kN |
|--------------------|------------------------------|-----|-----|----|------------------------|
| K0669.080501       | K0669.080502                 | M8  | 50  | 17 | 40                     |
| K0669.080801       | K0669.080802                 | M8  | 80  | 17 | 40                     |
| K0669.081001       | K0669.081002                 | M8  | 100 | 17 | 40                     |
| K0669.081201       | K0669.081202                 | M8  | 120 | 17 | 40                     |
| K0669.081501       | K0669.081502                 | M8  | 150 | 17 | 40                     |
| K0669.100501       | K0669.100502                 | M10 | 50  | 17 | 40                     |
| K0669.100801       | K0669.100802                 | M10 | 80  | 17 | 40                     |
| K0669.101001       | K0669.101002                 | M10 | 100 | 17 | 40                     |
| K0669.101201       | K0669.101202                 | M10 | 120 | 17 | 40                     |
| K0669.101501       | K0669.101502                 | M10 | 150 | 17 | 40                     |
| K0669.120501       | K0669.120502                 | M12 | 50  | 19 | 40                     |
| K0669.120801       | K0669.120802                 | M12 | 80  | 19 | 40                     |
| K0669.121001       | K0669.121002                 | M12 | 100 | 19 | 40                     |
| K0669.121201       | K0669.121202                 | M12 | 120 | 19 | 40                     |
| K0669.121501       | K0669.121502                 | M12 | 150 | 19 | 40                     |
| K0669.160501       | K0669.160502                 | M16 | 50  | 24 | 40                     |
| K0669.160801       | K0669.160802                 | M16 | 80  | 24 | 40                     |
| K0669.161001       | K0669.161002                 | M16 | 100 | 24 | 40                     |
| K0669.161201       | K0669.161202                 | M16 | 120 | 24 | 40                     |
| K0669.161501       | K0669.161502                 | M16 | 150 | 24 | 40                     |
| K0669.200501       | K0669.200502                 | M20 | 50  | 30 | 40                     |
| K0669.200801       | K0669.200802                 | M20 | 80  | 30 | 40                     |
| K0669.201001       | K0669.201002                 | M20 | 100 | 30 | 40                     |
| K0669.201201       | K0669.201202                 | M20 | 120 | 30 | 40                     |
| K0669.201501       | K0669.201502                 | M20 | 150 | 30 | 40                     |

**K0672**

# Levelling feet plates

steel or stainless steel

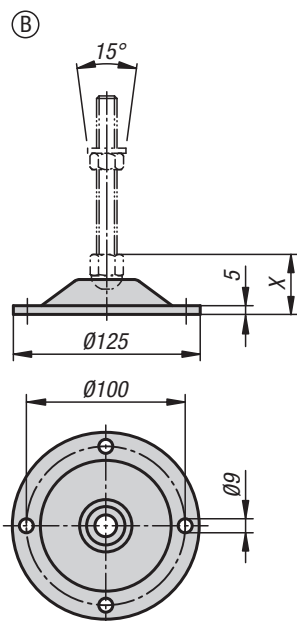
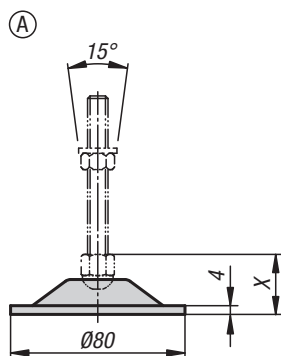
**Material:**

Plate steel or stainless steel 1.4301.

**Version:**

Steel chrome-plated.

Stainless steel Form A and B polished.

Stainless steel Form C and D glass-bead blasted.

**Sample order:**K0672.10801 K0672.10801 and K0669.080501  
**assembled****Note for ordering:**

If the levelling foot plate and the threaded spindle are to be supplied assembled, please add the suffix **"assembled"** to the order number for the plate and spindle (e.g. K0672.10801 and K0669.080501 **assembled**).

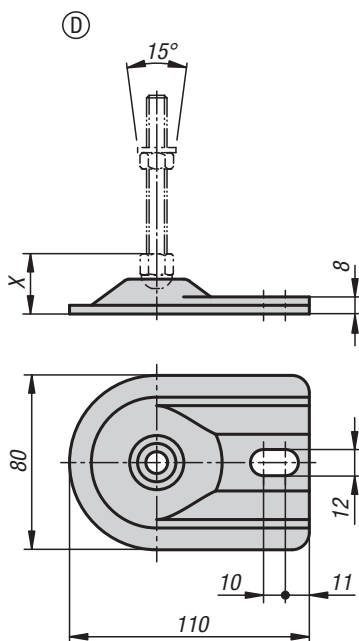
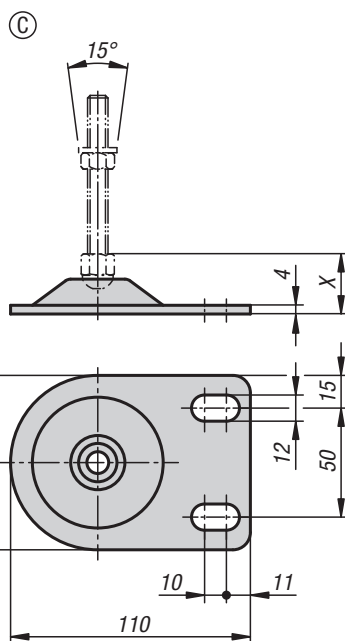
**Note:**

Levelling feet consist of a plate and a threaded spindle. Any plate can be combined with any threaded spindle.

For matching threaded spindles, see K0669.

**Drawing reference:**

1) X with spindle size:



①

A, C, D: M8/M10 = 31 mm  
M12 = 32 mm  
M16 = 36 mm  
M20 = 39 mm

B: M8/M10 = 46 mm  
M12 = 48 mm  
M16 = 51 mm  
M20 = 54 mm

**KIPP Levelling feet plates steel or stainless steel**

| Order No.<br>Steel | Order No.<br>Stainless steel | Form | Load rating<br>max. kN |
|--------------------|------------------------------|------|------------------------|
| K0672.10801        | K0672.10802                  | A    | 20                     |
| K0672.21251        | K0672.21252                  | B    | 40                     |
| K0672.30801        | K0672.30802                  | C    | 20                     |
| K0672.40801        | K0672.40802                  | D    | 20                     |

# K0673

## Levelling feet plates with rubber base

steel or stainless steel



### Material:

Plate steel or stainless steel 1.4301.  
Rubber base NBR, 70 Shore A.

### Version:

Steel chromed.  
Stainless steel polished.

### Sample order:

K0673.10801

K0673.10801 and K0669.080501 **assembled**

### Note for ordering:

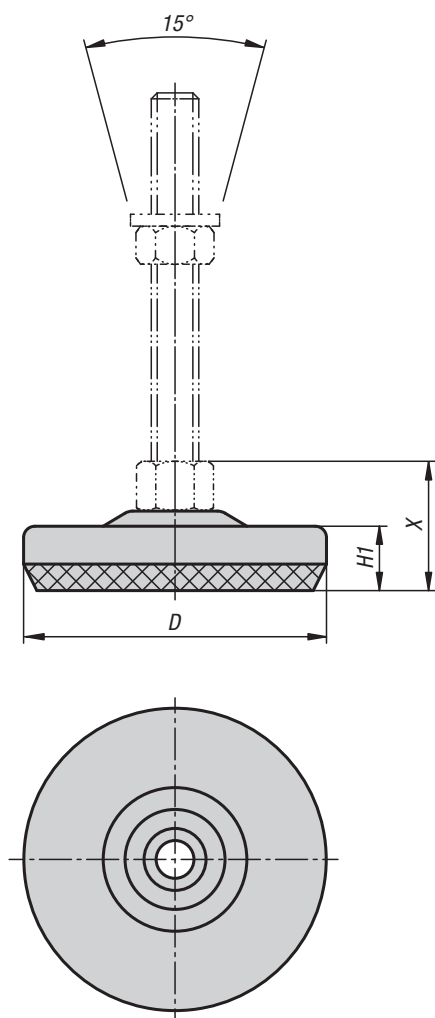
If the levelling foot plate and the threaded spindle are to be supplied assembled, please add the suffix **"assembled"** to the order number for the plate and spindle  
(e.g. K0673.10801 and K0669.080501 **assembled**).

### Note:

Levelling feet consist of a plate and a threaded spindle.  
Any plate can be combined with any threaded spindle.  
For matching threaded spindles see K0669.

### Drawing reference:

1) X with spindle size:



D = 80 :

①

M8/M10 = 37 mm  
M12 = 38 mm  
M16 = 42 mm  
M20 = 45 mm

D = 100 :

①

M8/M10 = 39 mm  
M12 = 40 mm  
M16 = 44 mm  
M20 = 47 mm

## KIPP Levelling feet plates with rubber base steel or stainless steel

| Order No.<br>Steel | Order No.<br>Stainless steel | D   | H1 | Load rating<br>max. kN |
|--------------------|------------------------------|-----|----|------------------------|
| K0673.10801        | K0673.10802                  | 80  | 17 | 8,5                    |
| K0673.11001        | K0673.11002                  | 100 | 19 | 20                     |

Notes



A large grid area for taking notes, consisting of a fine grid of small squares.



# K0739

## Levelling feet

steel or stainless steel



### Material:

Foot plate and threaded spindle steel or stainless steel.  
Rubber support (NBR) 80 Shore.

### Version:

Foot plate, galvanized or polished.  
Threaded spindle, galvanized or bright.  
Rubber support, vulcanised, black.

### Sample order:

K0739.1108010X50  
(include length L)

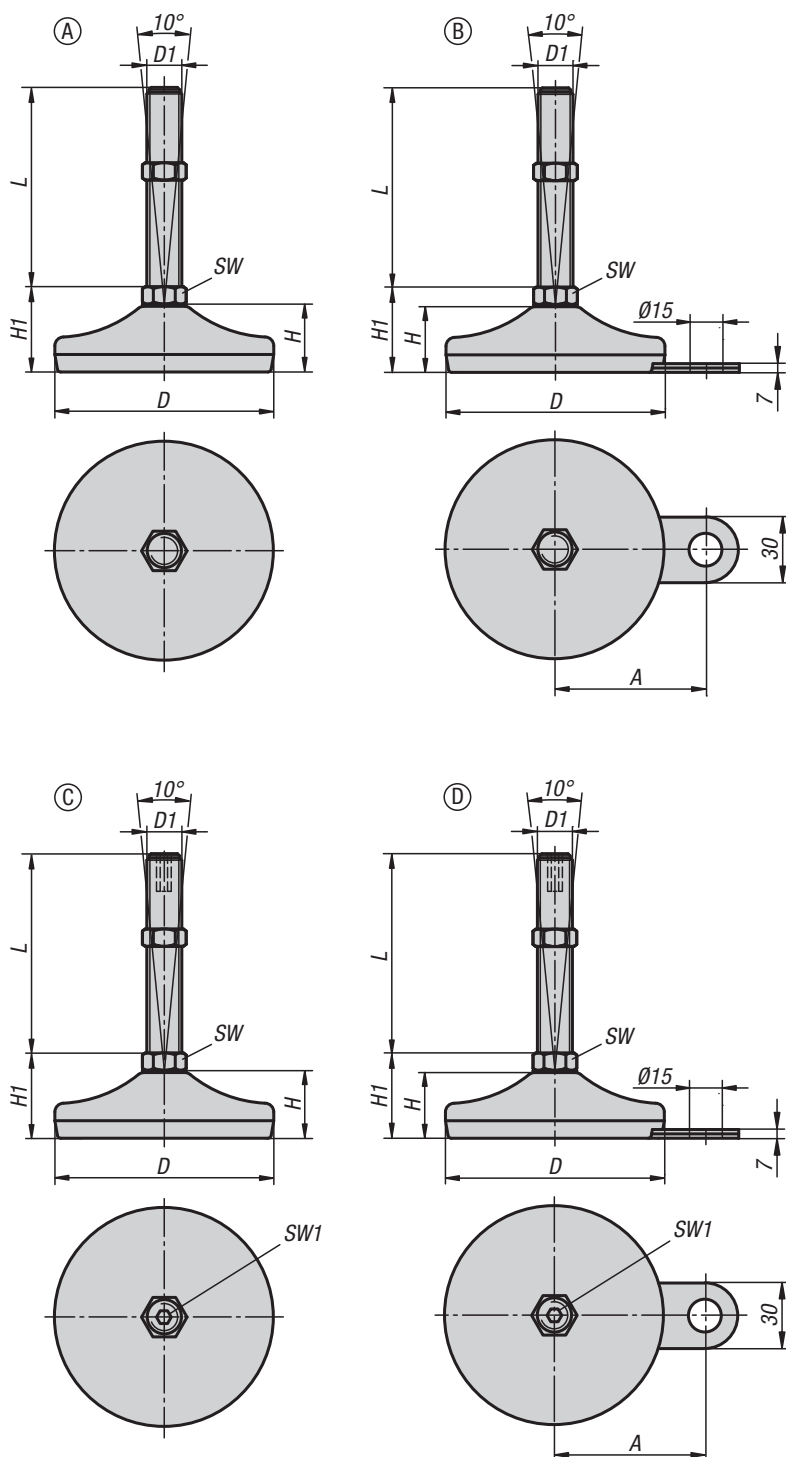
### Note:

Levelling feet steel or stainless steel with pivoting threaded spindle and rubber base. The solid rubber base is permanently vulcanised to the sheet metal plate. The rubber base has an excellent surface grip. It is sound damping and impedes transmission of vibrations and impacts to the floor.

The load values specified in the table are based on a test series, in which a static load was applied perpendicular to the plates through the centre of the spindle. Radially acting forces such as those produced by vibrations or other shaking effects, affect the load rating and are not taken into account for the specified values.

For stainless steel feet from spindle size M16, the wrench sizes apply across two flats.

Supplied with matching nut.







## KIPP Form A

| Order No.      | Form | Main material   | D   | D1  | H  | H1   | SW | L                          | Load rating max. kN |
|----------------|------|-----------------|-----|-----|----|------|----|----------------------------|---------------------|
| K0739.1105010X | A    | steel           | 50  | M10 | 19 | 29   | 14 | 50/100                     | 4                   |
| K0739.1105012X | A    | steel           | 50  | M12 | 19 | 29   | 14 | 50/100/150                 | 4                   |
| K0739.1106010X | A    | steel           | 60  | M10 | 22 | 32   | 14 | 50/100                     | 7                   |
| K0739.1106012X | A    | steel           | 60  | M12 | 22 | 32   | 14 | 50/100/150                 | 7                   |
| K0739.1108010X | A    | steel           | 80  | M10 | 25 | 35   | 14 | 50/100                     | 10                  |
| K0739.1108012X | A    | steel           | 80  | M12 | 25 | 35   | 14 | 50/100/150                 | 10                  |
| K0739.1108014X | A    | steel           | 80  | M14 | 25 | 35   | 14 | 50/100/150                 | 10                  |
| K0739.1108016X | A    | steel           | 80  | M16 | 25 | 35   | 16 | 100/150                    | 10                  |
| K0739.1108020X | A    | steel           | 80  | M20 | 25 | 36   | 20 | 75/100/150/200             | 10                  |
| K0739.1110020X | A    | steel           | 100 | M20 | 28 | 38,5 | 20 | 75/100/150/200/250         | 15                  |
| K0739.1110024X | A    | steel           | 100 | M24 | 28 | 38,5 | 24 | 100/150/200/250            | 15                  |
| K0739.1112020X | A    | steel           | 120 | M20 | 32 | 42,5 | 20 | 100/150/200                | 30                  |
| K0739.1112024X | A    | steel           | 120 | M24 | 32 | 42,5 | 24 | 100/150/200                | 30                  |
| K0739.1112030X | A    | steel           | 120 | M30 | 32 | 43,5 | 30 | 100/150/200                | 30                  |
| K0739.1205010X | A    | stainless steel | 50  | M10 | 19 | 29   | 14 | 50/100                     | 4                   |
| K0739.1205012X | A    | stainless steel | 50  | M12 | 19 | 29   | 14 | 50/100/150                 | 4                   |
| K0739.1206010X | A    | stainless steel | 60  | M10 | 22 | 32   | 14 | 50/100                     | 7                   |
| K0739.1206012X | A    | stainless steel | 60  | M12 | 22 | 32   | 14 | 50/100/150                 | 7                   |
| K0739.1208010X | A    | stainless steel | 80  | M10 | 25 | 35   | 14 | 50/75/100/125              | 10                  |
| K0739.1208012X | A    | stainless steel | 80  | M12 | 25 | 35   | 14 | 50/75/100/125/150          | 10                  |
| K0739.1208014X | A    | stainless steel | 80  | M14 | 25 | 35   | 14 | 75/100/125/150/175         | 10                  |
| K0739.1208016X | A    | stainless steel | 80  | M16 | 25 | 35   | 13 | 75/100/125/150/175         | 10                  |
| K0739.1208020X | A    | stainless steel | 80  | M20 | 25 | 38   | 17 | 75/100/125/150/175/200/225 | 10                  |
| K0739.1210020X | A    | stainless steel | 100 | M20 | 30 | 43   | 17 | 75/100/125/150/175/200     | 15                  |
| K0739.1210024X | A    | stainless steel | 100 | M24 | 30 | 44   | 20 | 100/125/150/175/200        | 15                  |
| K0739.1212020X | A    | stainless steel | 120 | M20 | 32 | 43   | 17 | 100/150/200                | 30                  |
| K0739.1212024X | A    | stainless steel | 120 | M24 | 32 | 44   | 20 | 100/150/200                | 30                  |
| K0739.1212030X | A    | stainless steel | 120 | M30 | 32 | 47   | 26 | 100/150/200                | 30                  |

## KIPP Form B with fastening tab

| Order No.      | Form | Main material   | A  | D   | D1  | H  | H1   | SW | L                          | Load rating max. kN |
|----------------|------|-----------------|----|-----|-----|----|------|----|----------------------------|---------------------|
| K0739.2106010X | B    | steel           | 45 | 60  | M10 | 22 | 32   | 14 | 50/100                     | 7                   |
| K0739.2106012X | B    | steel           | 45 | 60  | M12 | 22 | 32   | 14 | 50/100/150                 | 7                   |
| K0739.2108010X | B    | steel           | 54 | 80  | M10 | 25 | 35   | 14 | 50/100                     | 10                  |
| K0739.2108012X | B    | steel           | 54 | 80  | M12 | 25 | 35   | 14 | 50/100/150                 | 10                  |
| K0739.2108014X | B    | steel           | 54 | 80  | M14 | 25 | 35   | 14 | 50/100/150                 | 10                  |
| K0739.2108016X | B    | steel           | 54 | 80  | M16 | 25 | 35   | 16 | 100/150                    | 10                  |
| K0739.2108020X | B    | steel           | 54 | 80  | M20 | 25 | 36   | 20 | 75/100/150/200             | 10                  |
| K0739.2110020X | B    | steel           | 69 | 100 | M20 | 28 | 38,5 | 20 | 75/100/150/200/250         | 15                  |
| K0739.2110024X | B    | steel           | 69 | 100 | M24 | 28 | 38,5 | 24 | 100/150/200/250            | 15                  |
| K0739.2206010X | B    | stainless steel | 45 | 60  | M10 | 22 | 32   | 14 | 50/100                     | 7                   |
| K0739.2206012X | B    | stainless steel | 45 | 60  | M12 | 22 | 32   | 14 | 50/100/150                 | 7                   |
| K0739.2208010X | B    | stainless steel | 54 | 80  | M10 | 25 | 35   | 14 | 50/75/100/125              | 10                  |
| K0739.2208012X | B    | stainless steel | 54 | 80  | M12 | 25 | 35   | 14 | 50/75/100/125/150          | 10                  |
| K0739.2208014X | B    | stainless steel | 54 | 80  | M14 | 25 | 35   | 14 | 75/100/125/150/175         | 10                  |
| K0739.2208016X | B    | stainless steel | 54 | 80  | M16 | 25 | 35   | 13 | 75/100/125/150/175         | 10                  |
| K0739.2208020X | B    | stainless steel | 54 | 80  | M20 | 25 | 38   | 17 | 75/100/125/150/175/200/225 | 10                  |
| K0739.2210020X | B    | stainless steel | 69 | 100 | M20 | 30 | 43   | 17 | 75/100/125/150/175/200     | 15                  |
| K0739.2210024X | B    | stainless steel | 69 | 100 | M24 | 30 | 44   | 20 | 100/125/150/175/200        | 15                  |

# Levelling feet

steel or stainless steel



## KIPP Form C with hexagon socket

| Order No.      | Form | Main material   | D   | D1  | H  | H1   | SW | L                  | Load rating max. kN |
|----------------|------|-----------------|-----|-----|----|------|----|--------------------|---------------------|
| K0739.3105010X | C    | steel           | 50  | M10 | 19 | 29   | 14 | 50                 | 4                   |
| K0739.3105012X | C    | steel           | 50  | M12 | 19 | 29   | 14 | 50/100             | 4                   |
| K0739.3105016X | C    | steel           | 50  | M16 | 19 | 29   | 16 | 75/100/150         | 4                   |
| K0739.3106010X | C    | steel           | 60  | M10 | 22 | 32   | 14 | 50                 | 7                   |
| K0739.3106012X | C    | steel           | 60  | M12 | 22 | 32   | 14 | 50/100             | 7                   |
| K0739.3106016X | C    | steel           | 60  | M16 | 22 | 33   | 16 | 75/100/150         | 7                   |
| K0739.3108016X | C    | steel           | 80  | M16 | 25 | 35   | 16 | 100/150            | 10                  |
| K0739.3108020X | C    | steel           | 80  | M20 | 25 | 36   | 20 | 75                 | 10                  |
| K0739.3110020X | C    | steel           | 100 | M20 | 28 | 38,5 | 20 | 100/150            | 15                  |
| K0739.3110024X | C    | steel           | 100 | M24 | 28 | 38,5 | 24 | 200                | 15                  |
| K0739.3112020X | C    | steel           | 120 | M20 | 32 | 42,5 | 20 | 100/150/200        | 30                  |
| K0739.3112024X | C    | steel           | 120 | M24 | 32 | 42,5 | 24 | 100/150/200        | 30                  |
| K0739.3112030X | C    | steel           | 120 | M30 | 32 | 43,5 | 30 | 100/150/200        | 30                  |
| K0739.3205010X | C    | stainless steel | 50  | M10 | 19 | 29   | 14 | 50                 | 4                   |
| K0739.3205012X | C    | stainless steel | 50  | M12 | 19 | 29   | 14 | 50/100             | 4                   |
| K0739.3205016X | C    | stainless steel | 50  | M16 | 19 | 29   | 16 | 75/100/150/200     | 4                   |
| K0739.3206010X | C    | stainless steel | 60  | M10 | 22 | 32   | 14 | 50                 | 7                   |
| K0739.3206012X | C    | stainless steel | 60  | M12 | 22 | 32   | 14 | 50/100             | 7                   |
| K0739.3206016X | C    | stainless steel | 60  | M16 | 22 | 33   | 16 | 75/100/150/200     | 7                   |
| K0739.3208016X | C    | stainless steel | 80  | M16 | 25 | 35   | 13 | 75/100/125/150/175 | 10                  |
| K0739.3208020X | C    | stainless steel | 80  | M20 | 25 | 38   | 17 | 75/200             | 10                  |
| K0739.3210020X | C    | stainless steel | 100 | M20 | 30 | 43   | 17 | 150                | 15                  |
| K0739.3212020X | C    | stainless steel | 120 | M20 | 32 | 43   | 17 | 100/150/200        | 30                  |
| K0739.3212024X | C    | stainless steel | 120 | M24 | 32 | 45   | 20 | 100/150/200        | 30                  |
| K0739.3212030X | C    | stainless steel | 120 | M30 | 32 | 47   | 26 | 100/150/200        | 30                  |

## KIPP Form D with hexagon socket and fastening tab

| Order No.      | Form | Main material   | A  | D  | D1  | H  | H1 | SW | SW1 | L              | Load rating max. kN |
|----------------|------|-----------------|----|----|-----|----|----|----|-----|----------------|---------------------|
| K0739.4106010X | D    | steel           | 45 | 60 | M10 | 22 | 32 | 14 | 5   | 50             | 7                   |
| K0739.4106012X | D    | steel           | 45 | 60 | M12 | 22 | 32 | 14 | 6   | 50/100         | 7                   |
| K0739.4106016X | D    | steel           | 45 | 60 | M16 | 22 | 33 | 16 | 8   | 75/100/150/200 | 7                   |
| K0739.4206010X | D    | stainless steel | 45 | 60 | M10 | 22 | 32 | 14 | 5   | 50             | 7                   |
| K0739.4206012X | D    | stainless steel | 45 | 60 | M12 | 22 | 32 | 14 | 6   | 50/100         | 7                   |
| K0739.4206016X | D    | stainless steel | 45 | 60 | M16 | 22 | 33 | 16 | 8   | 75/100/150/200 | 7                   |

# K0741

## Levelling feet

stainless steel for sterile areas



### Material:

Stainless steel foot plate 1.4301.  
Stainless steel threaded spindle 1.4301.  
Rubber base and rubber seal (EPDM).

### Version:

Foot plate, polished.  
Threaded spindle, bright.  
Rubber base black.  
Rubber seal black.

### Sample order:

K0741.08016X143

### Note:

The levelling foot has an adjustment sleeve which covers the part of the thread. An O-ring is inserted inside the sleeve to prevent dirt from entering.

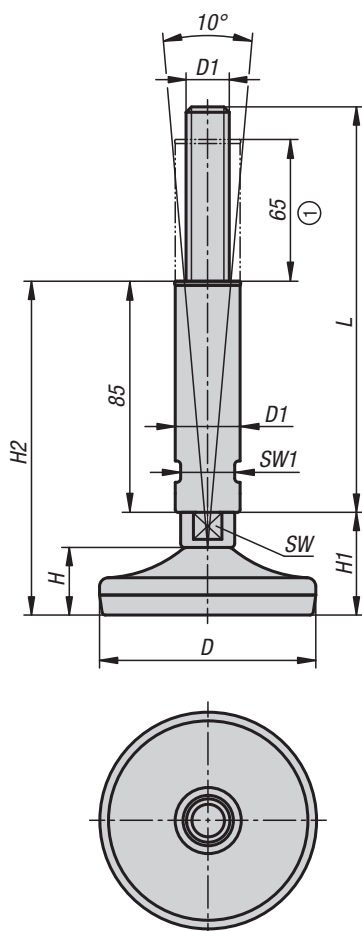
EPDM complies with the guidelines specified in the USDA documentation for rubber products.

The stainless steel levelling feet for sterile areas received the Equipment Acceptance Certificate of the USDA (US-Department of Agriculture).

The load values specified in the table are based on a test series in which a static load was applied perpendicular to the plates through the centre of the spindle. Radially acting forces such as those produced by vibrations or other shaking effects, affect the load rating and are not taken into account for the specified values.

### Drawing reference:

1) Adjustment range



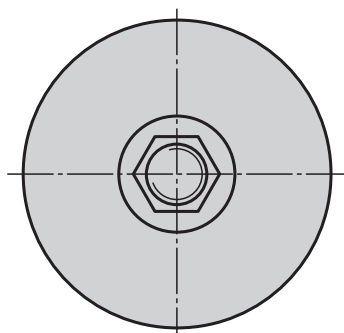
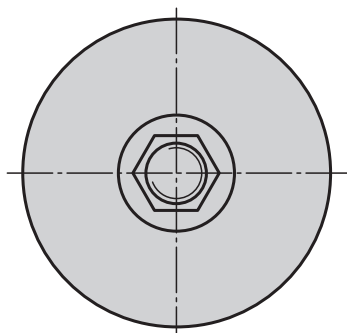
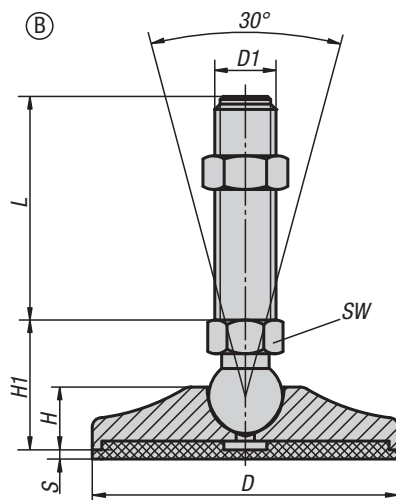
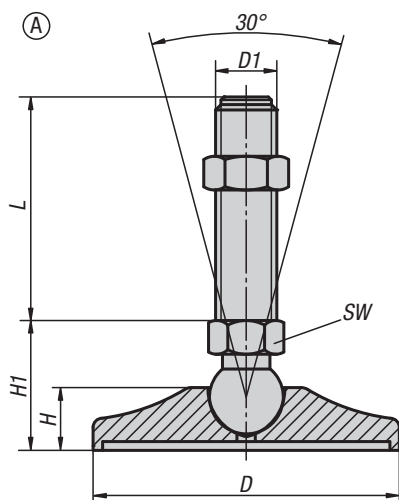
## KIPP Levelling feet stainless steel for sterile areas

| Order No.       | D   | D1  | D2 | H  | H1 | H2  | SW | SW1 | L   | Load rating max. kN |
|-----------------|-----|-----|----|----|----|-----|----|-----|-----|---------------------|
| K0741.08016X143 | 80  | M16 | 24 | 25 | 38 | 123 | 17 | 20  | 150 | 10                  |
| K0741.08020X143 | 80  | M20 | 30 | 25 | 38 | 123 | 17 | 26  | 150 | 10                  |
| K0741.10016X144 | 100 | M16 | 24 | 30 | 43 | 128 | 17 | 20  | 150 | 15                  |
| K0741.10020X144 | 100 | M20 | 30 | 30 | 43 | 128 | 17 | 26  | 150 | 15                  |
| K0741.10024X144 | 100 | M24 | 35 | 30 | 44 | 129 | 20 | 30  | 150 | 15                  |
| K0741.12016X144 | 120 | M16 | 24 | 32 | 45 | 130 | 17 | 20  | 150 | 30                  |
| K0741.12020X144 | 120 | M20 | 30 | 32 | 45 | 130 | 17 | 26  | 150 | 30                  |
| K0741.12024X144 | 120 | M24 | 35 | 32 | 46 | 131 | 20 | 30  | 150 | 30                  |

**K0742**

# Swivel feet

steel


**Material:**

Foot plate and threaded spindle steel.  
Anti-slip plate (NBR) 70 Shore.

**Version:**

Foot plate painted yellow.  
Threaded spindle, galvanized.  
Anti-slip plate black.

**Sample order:**

K0742.005010X25  
(include length L)

**Note:**

High load rated steel swivel feet with yellow painted plate, optional with an anti-slip plate. The anti-slip plate absorbs vibrations and prevents the swivel foot slipping.

The load values specified in the table are based on a test series, in which a static load was applied perpendicular to the plates through the centre of the spindle. Radially acting forces such as those produced by vibrations or other shaking effects, affect the load rating and are not taken into account for the specified values.

Supplied with matching nut.

**Drawing reference:**

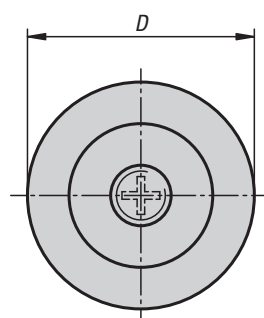
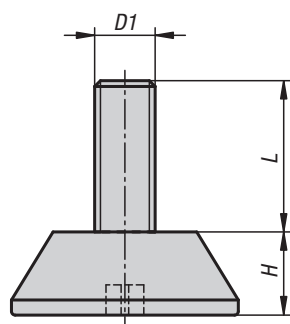
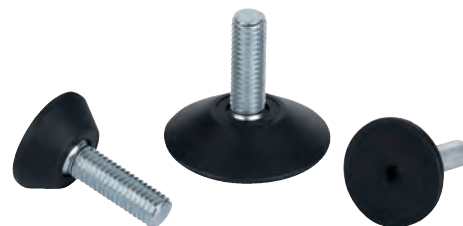
Form A without anti-slip plate  
Form B with anti-slip plate

## KIPP Swivel feet, steel

| Order No.<br>Form A | Order No.<br>Form B | D   | D1  | H    | H1 | S   | SW | L                         | Load rating<br>max. kN |
|---------------------|---------------------|-----|-----|------|----|-----|----|---------------------------|------------------------|
| K0742.005010X       | K0742.105010X       | 50  | M10 | 16   | 28 | -/3 | 14 | 25/50/75/100/125          | 15                     |
| K0742.005012X       | K0742.105012X       | 50  | M12 | 16   | 28 | -/3 | 14 | 25/50/75/100/125          | 15                     |
| K0742.005014X       | K0742.105014X       | 50  | M14 | 16   | 28 | -/3 | 14 | 25/50/75/100/125          | 15                     |
| K0742.006514X       | K0742.106514X       | 65  | M14 | 17   | 30 | -/3 | 14 | 50/75/100/125/150         | 20                     |
| K0742.006516X       | K0742.106516X       | 65  | M16 | 17   | 30 | -/3 | 16 | 50/75/100/125/150/175     | 20                     |
| K0742.008016X       | K0742.108016X       | 80  | M16 | 19,5 | 33 | -/3 | 16 | 50/75/100/125/150/175/200 | 30                     |
| K0742.008020X       | K0742.108020X       | 80  | M20 | 19,5 | 36 | -/3 | 17 | 75/100/125/150/175/200    | 30                     |
| K0742.010016X       | K0742.110016X       | 100 | M16 | 20   | 43 | -/3 | 20 | 50/75/100/125/150/175/200 | 35                     |
| K0742.010020X       | K0742.110020X       | 100 | M20 | 20   | 43 | -/3 | 20 | 75/100/125/150/175/200    | 45                     |
| K0742.010024X       | K0742.110024X       | 100 | M24 | 20   | 44 | -/3 | 20 | 75/100/125/150/175/200    | 55                     |

**K0674**

# Levelling feet round


**Material:**

Polyamide.  
Screw, steel.

**Version:**

Black.  
Galvanized screw.

**Sample order:**

K0674.3006X020  
(include length L)

**Note:**

Levelling feet with cross slot in  
the base as assembly aid.  
Rigid version.



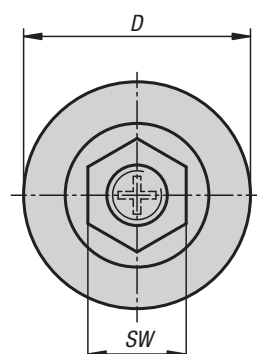
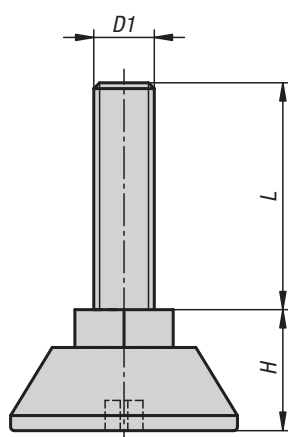
## KIPP Levelling feet round

| Order No.   | D  | D1  | H  | L              | Load rating<br>max. kN (static<br>load only) |
|-------------|----|-----|----|----------------|--|
| K0674.3006X | 30 | M6  | 11 | 20/30          | 3  |
| K0674.3008X | 30 | M8  | 11 | 16/20/25/30/40 | 3  |
| K0674.3010X | 30 | M10 | 11 | 25/30/35       | 3  |
| K0674.4708X | 47 | M8  | 11 | 16/20/30/40    | 4  |
| K0674.4710X | 47 | M10 | 11 | 20/30/55       | 4  |

**K0675**

# Levelling feet round

with hex. collar


**Material:**

Polyamide.  
Screw, steel.

**Version:**

Black.  
Galvanized screw.

**Sample order:**

K0675.3006X020  
(include length L)

**Note:**

Levelling feet with hexagonal collar and cross slot in the base as assembly aid. Rigid version.

**KIPP Levelling feet round with hex. collar**

| Order No.   | D  | D1  | H  | SW | L              | Load rating<br>max. kN (static<br>load only) |
|-------------|----|-----|----|----|----------------|--|
| K0675.3006X | 30 | M6  | 16 | 13 | 20/30          | 3  |
| K0675.3008X | 30 | M8  | 16 | 13 | 15/20/25/30/40 | 3  |
| K0675.4708X | 47 | M8  | 16 | 13 | 15/20/30/40    | 4  |
| K0675.4710X | 47 | M10 | 16 | 17 | 20/30          | 4  |

# K0676

## Levelling feet

with hex. base



### Material:

Polyethylene.  
Screw, steel.

### Version:

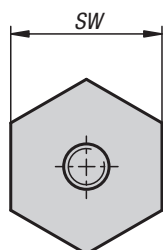
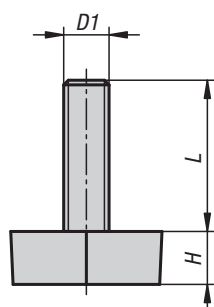
Black.  
Galvanized screw.

### Sample order:

K0676.2006X020  
(include length L)

### Note:

Levelling feet with hexagonal base.  
Rigid version.



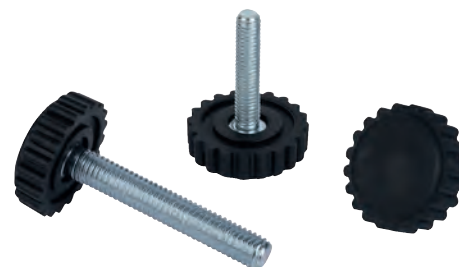
### KIPP Levelling feet with hex. base

| Order No.   | D1  | H   | SW | L           | Load rating<br>max. kN (static<br>load only) |
|-------------|-----|-----|----|-------------|--|
| K0676.2006X | M6  | 7   | 20 | 20/30/40/50 | 1,5  |
| K0676.2008X | M8  | 7   | 20 | 20/30/40/50 | 3  |
| K0676.2506X | M6  | 7,5 | 25 | 20/30/40/50 | 1,5  |
| K0676.2508X | M8  | 7,5 | 25 | 20/30/40/50 | 3  |
| K0676.2510X | M10 | 7,5 | 25 | 20/30       | 4  |
| K0676.3008X | M8  | 8   | 30 | 20/30/40/50 | 3  |
| K0676.3010X | M10 | 8   | 30 | 20/30       | 3  |

**K0677**

# Levelling feet

with knurled base



**Material:**

Polyamide.  
Screw, steel.

**Version:**

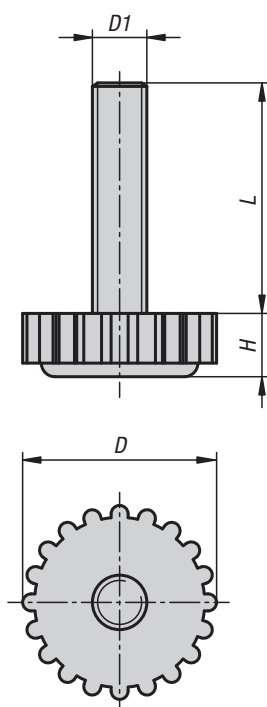
Black.  
Galvanized screw.

**Sample order:**

K0677.2805X016  
(include length L)

**Note:**

Levelling feet with knurled base.  
Rigid version.



## KIPP Levelling feet with knurled base

| Order No.   | D    | D1 | H   | L                    | Load rating<br>max. kN (static<br>load only) |
|-------------|------|----|-----|----------------------|--|
| K0677.2805X | 28,5 | M5 | 9,3 | 16/20/25/40          | 2  |
| K0677.2806X | 28,5 | M6 | 9,3 | 16/20/30/40/50       | 3,5  |
| K0677.2808X | 28,5 | M8 | 9,3 | 16/20/30/40/50/60/80 | 4,5  |



Notes



A large grid area for taking notes, consisting of a fine grid of small squares.



# K0678

## Levelling feet



### Material:

Foot plate and threaded spindle in steel.

### Version:

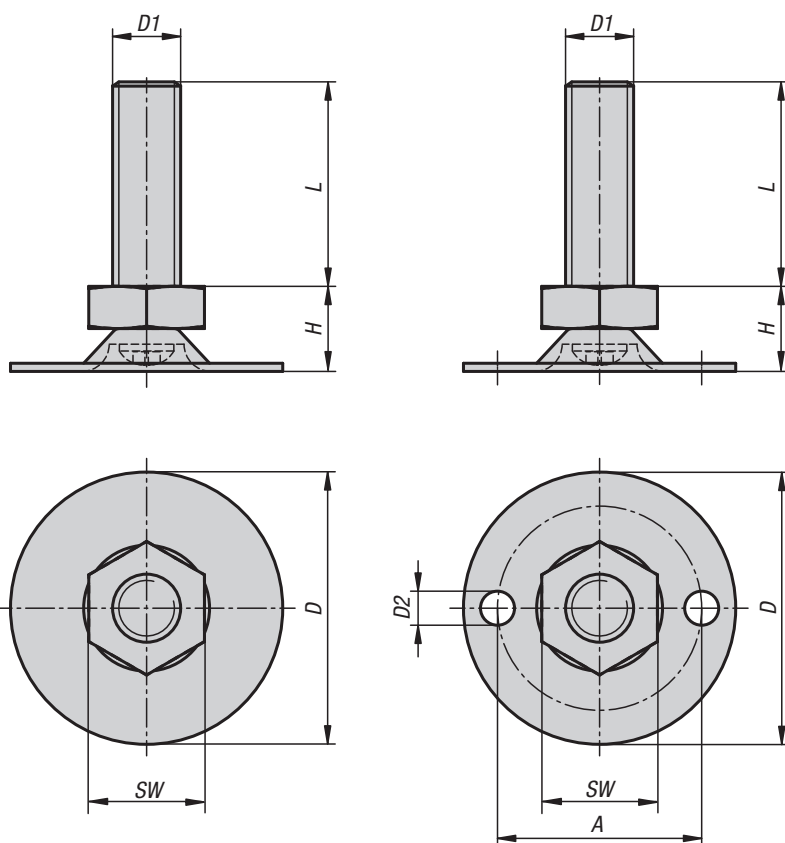
Foot plate and threaded spindle, galvanized.

### Sample order:

K0678.03008X016  
(include length L)

### Note:

The threaded spindle is pressed into the rotatable base.



## KIPP Levelling feet

| Order No.<br>without hole | Order No.<br>with hole | A      | D  | D1  | D2    | H    | SW | L                 | Load rating<br>max. kN (static<br>load only) |
|---------------------------|------------------------|--------|----|-----|-------|------|----|-------------------|--|
| K0678.03008X              | K0678.13008X           | -/24,3 | 30 | M8  | -/4   | 11   | 13 | 16/20/30/40/50    | 2,5  |
| K0678.03010X              | K0678.13010X           | -/24,3 | 30 | M10 | -/4   | 12,5 | 17 | 16/20/30/40/50/60 | 3,5  |
| K0678.04008X              | K0678.14008X           | -/30   | 40 | M8  | -/5   | 11   | 13 | 16/20/30/40/50    | 2,5  |
| K0678.04010X              | K0678.14010X           | -/30   | 40 | M10 | -/5   | 11   | 17 | 16/20/30/40/50/60 | 3,5  |
| K0678.05008X              | K0678.15008X           | -/35   | 50 | M8  | -/5,5 | 12,5 | 13 | 16/20/30/40/50    | 2,5  |
| K0678.05010X              | K0678.15010X           | -/35   | 50 | M10 | -/5,5 | 14   | 17 | 16/20/30/40/50/60 | 3,5  |
| K0678.06008X              | K0678.16008X           | -/46   | 60 | M8  | -/5,5 | 13,5 | 13 | 16/20/30/40/50    | 2,5  |
| K0678.06010X              | K0678.16010X           | -/46   | 60 | M10 | -/5,5 | 15   | 17 | 16/20/30/40/50/60 | 3,5  |

**K0679**

# Levelling feet caps

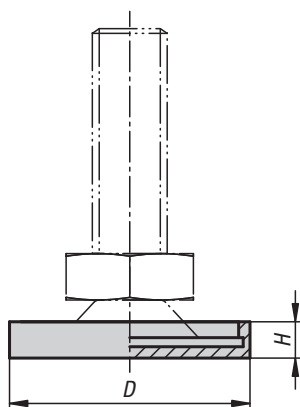


**Material:**  
Polyethylene

**Version:**  
black.

**Sample order:**  
K0679.1030

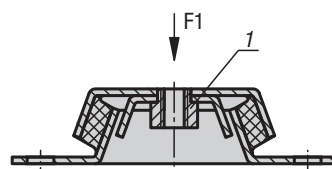
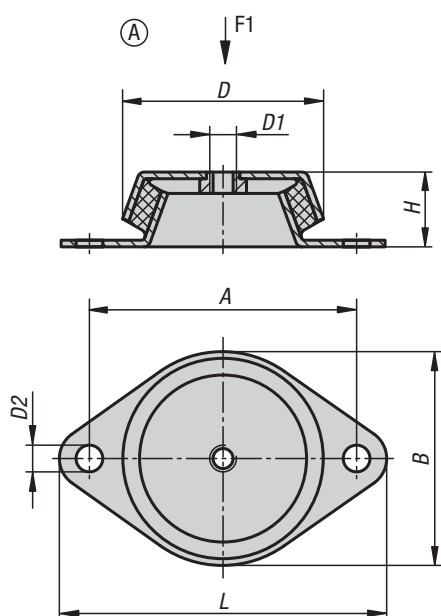
**Note:**  
The caps protect the surface  
against scratch marks.



## KIPP Levelling feet caps

| Order No.  | for foot plate Ø | D    | H   |
|------------|------------------|------|-----|
| K0679.1030 | 30               | 31,8 | 4,8 |
| K0679.1060 | 60               | 62   | 6,8 |

# Machine feet


**Material:**

Metal parts, steel grade 5.6.  
Elastomer, natural rubber,  
medium hardness, Shore 60.

**Version:**

Steel galvanized.

**Sample order:**

K0687.062060

**Note:**

These machine feet have proven themselves to be universally applicable elements for the elastic support of all types of machine. They are commonly used wherever large horizontal movements are to be avoided. The horizontal rigidity is higher in all directions than the vertical rigidity. If used correctly they are excellent at preventing the transfer of vibration and noise.

Machine feet with shear protection are available for situations where tensile forces are to be expected.

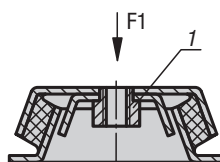
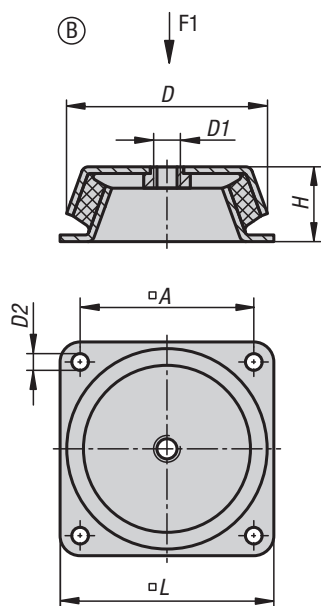
The indicated load data are reference values for static loads by rubber hardness of Shore 60A.

**On request:**

Rubber hardness Shore 40 or 70 A.

**Drawing reference:**

1) With shear protection

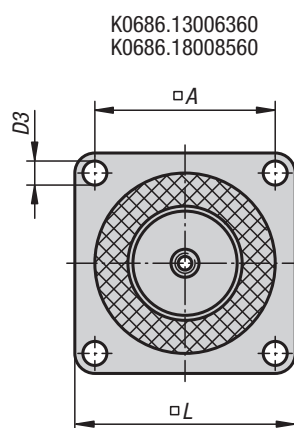
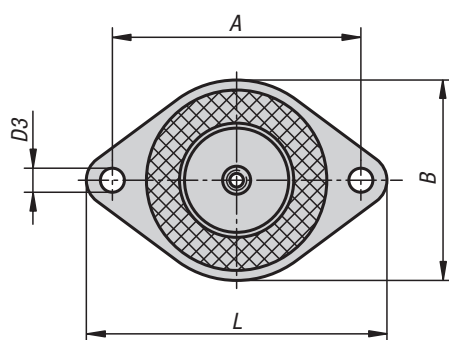
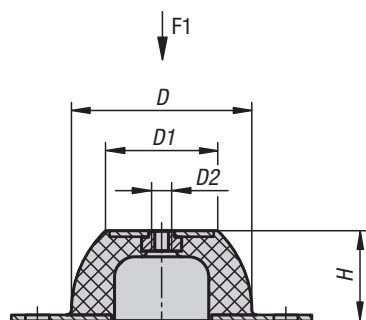

**KIPP Machine feet**

| Order No.<br>without shear protection | Order No.<br>with shear protection | Form | A   | B   | D   | D1  | D2   | H  | L   | F1<br>(N) |
|---------------------------------------|------------------------------------|------|-----|-----|-----|-----|------|----|-----|-----------|
| K0687.062060                          | K0687.062160                       | A    | 85  | 66  | 62  | M10 | 8,2  | 30 | 110 | 1500      |
| K0687.078060                          | K0687.078160                       | A    | 110 | 78  | 78  | M10 | 9    | 30 | 128 | 1800      |
| K0687.092060                          | K0687.092160                       | A    | 110 | 96  | 86  | M12 | 10,2 | 45 | 140 | 3000      |
| K0687.106060                          | K0687.106160                       | A    | 140 | 110 | 106 | M12 | 12,4 | 39 | 170 | 3600      |
| K0687.150060                          | K0687.150160                       | B    | 132 | -   | 150 | M16 | 12,5 | 51 | 168 | 8000      |

# K0686

## Cup elements

type H2



### Material:

Metal parts, steel, grade 5.6.  
Natural rubber, hardness Shore 40 or 60 A.

### Version:

Steel galvanized.

### Sample order:

K0686.03502040

### Note:

The cup elements are highly elastic both in radial and in axial direction and therefore offer an outstanding impact isolation.

The special shaping of the cup elements allows isolation of sound and vibrations of machines and assemblies with a low natural frequency. They are especially suitable for supporting sensitive instruments and small devices.

The elements must not be subjected to tensile stress.

### Temperature range:

-30°C to +80°C.

## KIPP Cup elements type H2

| Order No.      | Version            | A   | B   | D   | D1  | D2  | D3   | H  | L   | F1 (N) |
|----------------|--------------------|-----|-----|-----|-----|-----|------|----|-----|--------|
| K0686.03502040 | hardness Shore 40A | 50  | 43  | 35  | 18  | M6  | 7    | 20 | 64  | 34     |
| K0686.05002540 | hardness Shore 40A | 66  | 56  | 50  | 33  | M8  | 8    | 25 | 85  | 200    |
| K0686.07003540 | hardness Shore 40A | 92  | 76  | 70  | 45  | M10 | 10   | 35 | 114 | 390    |
| K0686.08504040 | hardness Shore 40A | 110 | 96  | 85  | 53  | M10 | 11,5 | 40 | 136 | 680    |
| K0686.09004540 | hardness Shore 40A | 124 | 101 | 90  | 58  | M10 | 11,5 | 45 | 151 | 1280   |
| K0686.13006340 | hardness Shore 40A | 120 | -   | 130 | 78  | M12 | 14,5 | 63 | 150 | 2700   |
| K0686.18008540 | hardness Shore 40A | 160 | -   | 180 | 100 | M16 | 14,5 | 85 | 200 | 3700   |
| K0686.03502060 | hardness Shore 60A | 50  | 43  | 35  | 18  | M6  | 7    | 20 | 64  | 90     |
| K0686.05002560 | hardness Shore 60A | 66  | 56  | 50  | 33  | M8  | 8    | 25 | 85  | 490    |
| K0686.07003560 | hardness Shore 60A | 92  | 76  | 70  | 45  | M10 | 10   | 35 | 114 | 780    |
| K0686.08504060 | hardness Shore 60A | 110 | 96  | 85  | 53  | M10 | 11,5 | 40 | 136 | 1450   |
| K0686.09004560 | hardness Shore 60A | 124 | 101 | 90  | 58  | M10 | 11,5 | 45 | 151 | 2150   |
| K0686.13006360 | hardness Shore 60A | 120 | -   | 130 | 78  | M12 | 14,5 | 63 | 150 | 4900   |
| K0686.18008560 | hardness Shore 60A | 160 | -   | 180 | 100 | M16 | 14,5 | 85 | 200 | 7350   |

# Tube inserts square

with tapped bush


**Material:**

Body fibreglass reinforced thermoplastic.  
Threaded insert brass.

**Version:**

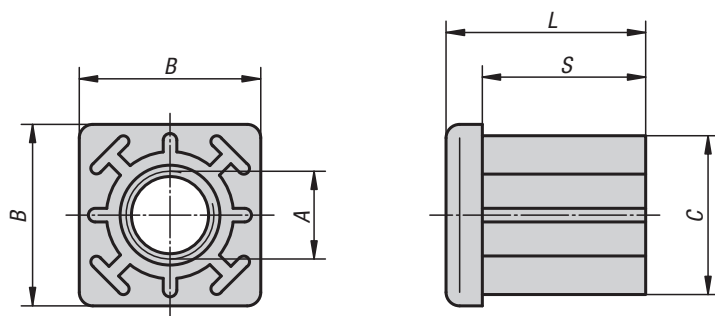
Insert black.  
Tapped bush nickel-plated.

**Sample order:**

K0430.103015

**Note:**

Threaded square inserts for attaching levelling feet, swivel feet and castors to square tubes.



## KIPP Tube inserts square with tapped bush

| Order No.    | A   | B  | C    | L  | S  | Suitable for square tubes | Load rating max. kN |
|--------------|-----|----|------|----|----|---------------------------|---------------------|
| K0430.103015 | M10 | 30 | 27,5 | 33 | 27 | 30 x 1,5                  | 5                   |
| K0430.123015 | M12 | 30 | 27,5 | 33 | 27 | 30 x 1,5                  | 5                   |
| K0430.143015 | M14 | 30 | 27,5 | 33 | 27 | 30 x 1,5                  | 5                   |
| K0430.163015 | M16 | 30 | 27,5 | 33 | 27 | 30 x 1,5                  | 5                   |
| K0430.103020 | M10 | 30 | 26,5 | 33 | 27 | 30 x 2                    | 5                   |
| K0430.123020 | M12 | 30 | 26,5 | 33 | 27 | 30 x 2                    | 5                   |
| K0430.143020 | M14 | 30 | 26,5 | 33 | 27 | 30 x 2                    | 5                   |
| K0430.163020 | M16 | 30 | 26,5 | 33 | 27 | 30 x 2                    | 5                   |
| K0430.104015 | M10 | 40 | 37,5 | 43 | 35 | 40 x 1,5                  | 8                   |
| K0430.124015 | M12 | 40 | 37,5 | 43 | 35 | 40 x 1,5                  | 8                   |
| K0430.144015 | M14 | 40 | 37,5 | 43 | 35 | 40 x 1,5                  | 8                   |
| K0430.164015 | M16 | 40 | 37,5 | 43 | 35 | 40 x 1,5                  | 8                   |
| K0430.204015 | M20 | 40 | 37,5 | 43 | 35 | 40 x 1,5                  | 8                   |
| K0430.104020 | M10 | 40 | 36,5 | 43 | 35 | 40 x 2                    | 10                  |
| K0430.124020 | M12 | 40 | 36,5 | 43 | 35 | 40 x 2                    | 10                  |
| K0430.144020 | M14 | 40 | 36,5 | 43 | 35 | 40 x 2                    | 10                  |
| K0430.164020 | M16 | 40 | 36,5 | 43 | 35 | 40 x 2                    | 10                  |
| K0430.204020 | M20 | 40 | 36,5 | 43 | 35 | 40 x 2                    | 10                  |
| K0430.104025 | M10 | 40 | 35,5 | 43 | 35 | 40 x 2,5                  | 10                  |
| K0430.124025 | M12 | 40 | 35,5 | 43 | 35 | 40 x 2,5                  | 10                  |
| K0430.144025 | M14 | 40 | 35,5 | 43 | 35 | 40 x 2,5                  | 10                  |
| K0430.164025 | M16 | 40 | 35,5 | 43 | 35 | 40 x 2,5                  | 10                  |
| K0430.204025 | M20 | 40 | 35,5 | 43 | 35 | 40 x 2,5                  | 10                  |
| K0430.104030 | M10 | 40 | 34,5 | 43 | 35 | 40 x 3                    | 10                  |
| K0430.124030 | M12 | 40 | 34,5 | 43 | 35 | 40 x 3                    | 10                  |
| K0430.144030 | M14 | 40 | 34,5 | 43 | 35 | 40 x 3                    | 10                  |
| K0430.164030 | M16 | 40 | 34,5 | 43 | 35 | 40 x 3                    | 10                  |
| K0430.204030 | M20 | 40 | 34,5 | 43 | 35 | 40 x 3                    | 10                  |

# Tube inserts square

with tapped bush



## KIPP Tube inserts square with tapped bush

| Order No.    | A   | B  | C    | L  | S  | Suitable for square tubes | Load rating max. kN |
|--------------|-----|----|------|----|----|---------------------------|---------------------|
| K0430.104040 | M10 | 40 | 32,5 | 43 | 35 | 40 x 4                    | 10                  |
| K0430.124040 | M12 | 40 | 32,5 | 43 | 35 | 40 x 4                    | 10                  |
| K0430.144040 | M14 | 40 | 32,5 | 43 | 35 | 40 x 4                    | 10                  |
| K0430.164040 | M16 | 40 | 32,5 | 43 | 35 | 40 x 4                    | 10                  |
| K0430.204040 | M20 | 40 | 32,5 | 43 | 35 | 40 x 4                    | 10                  |
| K0430.125015 | M12 | 50 | 47,5 | 55 | 44 | 50 x 1,5                  | 8                   |
| K0430.145015 | M14 | 50 | 47,5 | 55 | 44 | 50 x 1,5                  | 8                   |
| K0430.165015 | M16 | 50 | 47,5 | 55 | 44 | 50 x 1,5                  | 8                   |
| K0430.205015 | M20 | 50 | 47,5 | 55 | 44 | 50 x 1,5                  | 8                   |
| K0430.125020 | M12 | 50 | 46,5 | 55 | 44 | 50 x 2                    | 12                  |
| K0430.145020 | M14 | 50 | 46,5 | 55 | 44 | 50 x 2                    | 12                  |
| K0430.165020 | M16 | 50 | 46,5 | 55 | 44 | 50 x 2                    | 12                  |
| K0430.205020 | M20 | 50 | 46,5 | 55 | 44 | 50 x 2                    | 12                  |
| K0430.125025 | M12 | 50 | 45,5 | 55 | 44 | 50 x 2,5                  | 12                  |
| K0430.145025 | M14 | 50 | 45,5 | 55 | 44 | 50 x 2,5                  | 12                  |
| K0430.165025 | M16 | 50 | 45,5 | 55 | 44 | 50 x 2,5                  | 12                  |
| K0430.205025 | M20 | 50 | 45,5 | 55 | 44 | 50 x 2,5                  | 12                  |
| K0430.125030 | M12 | 50 | 44,5 | 55 | 44 | 50 x 3                    | 12                  |
| K0430.145030 | M14 | 50 | 44,5 | 55 | 44 | 50 x 3                    | 12                  |
| K0430.165030 | M16 | 50 | 44,5 | 55 | 44 | 50 x 3                    | 12                  |
| K0430.205030 | M20 | 50 | 44,5 | 55 | 44 | 50 x 3                    | 12                  |
| K0430.125040 | M12 | 50 | 42,5 | 55 | 44 | 50 x 4                    | 12                  |
| K0430.145040 | M14 | 50 | 42,5 | 55 | 44 | 50 x 4                    | 12                  |
| K0430.165040 | M16 | 50 | 42,5 | 55 | 44 | 50 x 4                    | 12                  |
| K0430.205040 | M20 | 50 | 42,5 | 55 | 44 | 50 x 4                    | 12                  |
| K0430.146020 | M14 | 60 | 56,5 | 55 | 45 | 60 x 2                    | 12                  |
| K0430.166020 | M16 | 60 | 56,5 | 55 | 45 | 60 x 2                    | 12                  |
| K0430.206020 | M20 | 60 | 56,5 | 55 | 45 | 60 x 2                    | 12                  |
| K0430.146030 | M14 | 60 | 54,5 | 55 | 45 | 60 x 3                    | 12                  |
| K0430.166030 | M16 | 60 | 54,5 | 55 | 45 | 60 x 3                    | 12                  |
| K0430.206030 | M20 | 60 | 54,5 | 55 | 45 | 60 x 3                    | 12                  |
| K0430.146040 | M14 | 60 | 52,5 | 55 | 45 | 60 x 4                    | 12                  |
| K0430.166040 | M16 | 60 | 52,5 | 55 | 45 | 60 x 4                    | 12                  |
| K0430.206040 | M20 | 60 | 52,5 | 55 | 45 | 60 x 4                    | 12                  |

# K0431

## Tube inserts round

with tapped bush



### Material:

Body fibreglass reinforced thermoplastic.  
Threaded insert brass.

### Version:

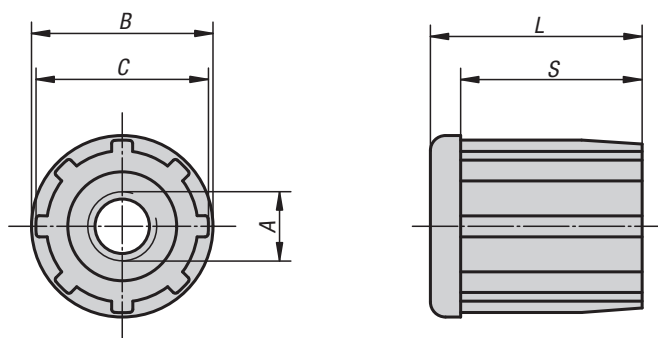
Insert black.  
Tapped bush nickel-plated.

### Sample order:

K0431.103010

### Note:

Threaded square inserts for attaching levelling feet, swivel feet and castors to round tubes.



## KIPP Tube inserts round with tapped bush

| Order No.    | A   | B  | C    | L  | S  | Suitable for tubes | Load rating<br>max. kN |
|--------------|-----|----|------|----|----|--------------------|------------------------|
| K0431.103010 | M10 | 30 | 28,4 | 33 | 27 | Ø 30 x 1           | 5                      |
| K0431.123010 | M12 | 30 | 28,4 | 33 | 27 | Ø 30 x 1           | 5                      |
| K0431.143010 | M14 | 30 | 28,4 | 33 | 27 | Ø 30 x 1           | 5                      |
| K0431.163010 | M16 | 30 | 28,4 | 33 | 27 | Ø 30 x 1           | 5                      |
| K0431.103815 | M10 | 38 | 35,5 | 43 | 35 | Ø 38 x 1,5         | 5                      |
| K0431.123815 | M12 | 38 | 35,5 | 43 | 35 | Ø 38 x 1,5         | 5                      |
| K0431.143815 | M14 | 38 | 35,5 | 43 | 35 | Ø 38 x 1,5         | 5                      |
| K0431.163815 | M16 | 38 | 35,5 | 43 | 35 | Ø 38 x 1,5         | 5                      |
| K0431.104215 | M10 | 42 | 39,9 | 43 | 35 | Ø 42,4 x 1,5       | 6                      |
| K0431.124215 | M12 | 42 | 39,9 | 43 | 35 | Ø 42,4 x 1,5       | 6                      |
| K0431.144215 | M14 | 42 | 39,9 | 43 | 35 | Ø 42,4 x 1,5       | 6                      |
| K0431.164215 | M16 | 42 | 39,9 | 43 | 35 | Ø 42,4 x 1,5       | 6                      |
| K0431.204215 | M20 | 42 | 39,9 | 43 | 35 | Ø 42,4 x 1,5       | 6                      |
| K0431.124815 | M12 | 48 | 45,8 | 55 | 44 | Ø 48,3 x 1,5       | 6                      |
| K0431.144815 | M14 | 48 | 45,8 | 55 | 44 | Ø 48,3 x 1,5       | 6                      |
| K0431.164815 | M16 | 48 | 45,8 | 55 | 44 | Ø 48,3 x 1,5       | 6                      |
| K0431.204815 | M20 | 48 | 45,8 | 55 | 44 | Ø 48,3 x 1,5       | 6                      |
| K0431.125015 | M12 | 50 | 48,4 | 55 | 44 | Ø 50,9 x 1,5       | 6                      |
| K0431.145015 | M14 | 50 | 48,4 | 55 | 44 | Ø 50,9 x 1,5       | 6                      |
| K0431.165015 | M16 | 50 | 48,4 | 55 | 44 | Ø 50,9 x 1,5       | 6                      |
| K0431.205015 | M20 | 50 | 48,4 | 55 | 44 | Ø 50,9 x 1,5       | 6                      |



# K0432

## Levelling feet

for aluminium profiles



### Material:

Body fibreglass reinforced thermoplastic.  
Spindle and washer steel.

### Version:

Body black.  
Spindle and washer galvanized.

### Sample order:

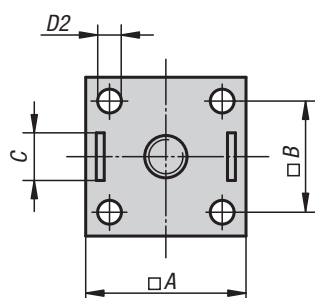
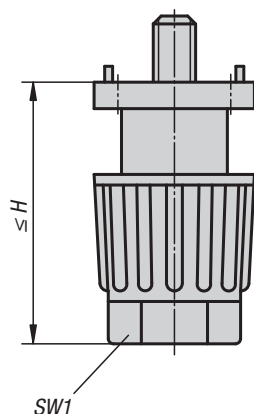
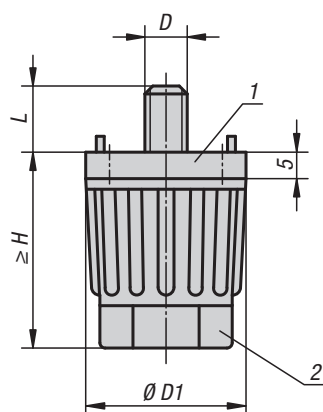
K0432.300806

### Note:

These levelling feet are suitable for tables and lighter installations. The foot height is adjusted by turning the base nut by hand or spanner. The pins on the top flange centre the foot and prevent it turning. These levelling feet can be attached to aluminium profiles using T-slot nuts, no need for drilling.

### Drawing reference:

- 1) support flange
- 2) nut



Side mounted in profile keyway

no drilling required when using a T-slot nut

Profile end mounted

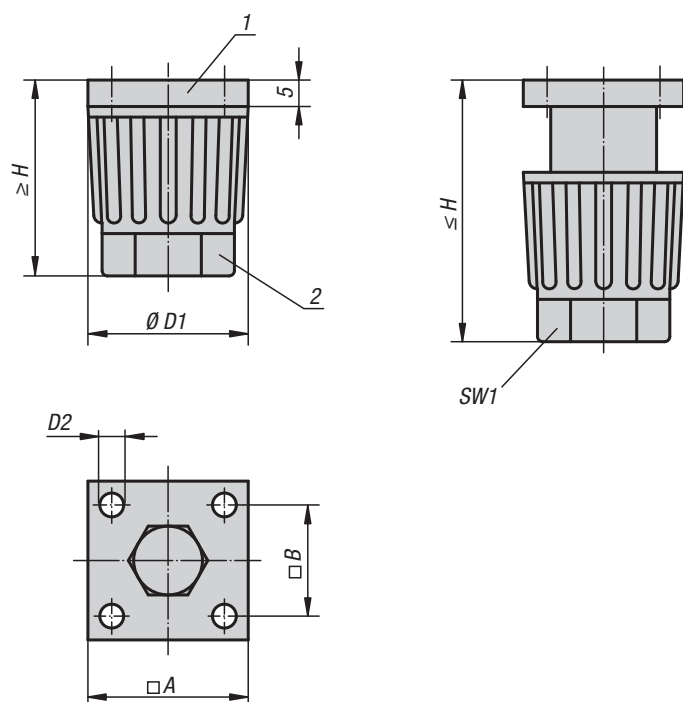


## KIPP Levelling feet for aluminium profiles

| Order No.    | A<br>for<br>aluminium profile | B    | C<br>for slot | D  | D1 | D2<br>for<br>countersunk screw | H<br>min. - max. | L | SW1 | Load rating<br>max. kN |
|--------------|-------------------------------|------|---------------|----|----|--------------------------------|------------------|---|-----|------------------------|
| K0432.300806 | 30                            | 20,5 | 8             | M6 | 30 | M4                             | 35-50            | 9 | 22  | 1,5                    |
| K0432.300808 | 30                            | 20,5 | 8             | M8 | 30 | M4                             | 35-50            | 9 | 22  | 1,5                    |
| K0432.301006 | 30                            | 20,5 | 10            | M6 | 30 | M4                             | 35-50            | 9 | 22  | 1,5                    |
| K0432.400808 | 40                            | 28   | 8             | M8 | 40 | M6                             | 45-65            | 9 | 30  | 1,5                    |
| K0432.401006 | 40                            | 28   | 10            | M6 | 40 | M6                             | 45-65            | 9 | 30  | 1,5                    |
| K0432.401008 | 40                            | 28   | 10            | M8 | 40 | M6                             | 45-65            | 9 | 30  | 1,5                    |

# K0433

## Levelling feet



### Material:

Body fibreglass reinforced thermoplastic.  
Hexagon head screw steel.

### Version:

Body black.  
Hexagon head screw galvanized.

### Sample order:

K0433.3004

### Note:

The flat top flange and sunken screw head make these levelling feet ideal for mounting on smooth surfaces.  
The foot height is adjusted by turning the base nut by hand or spanner.

### Drawing reference:

- 1) support flange
- 2) nut

## KIPP Levelling feet

| Order No.  | A  | B    | D1 | D2<br>for<br>countersunk screw | H<br>min. - max. | SW1 | Load rating<br>max. kN |
|------------|----|------|----|--------------------------------|------------------|-----|------------------------|
| K0433.3004 | 30 | 20,5 | 30 | M4                             | 35-50            | 22  | 1,5                    |
| K0433.4006 | 40 | 28   | 40 | M6                             | 45-65            | 30  | 1,5                    |

# K0304

## Swivel thrust pads



### Material:

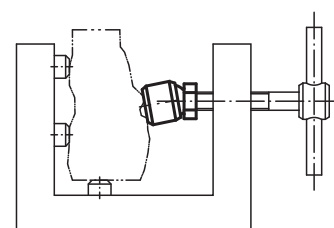
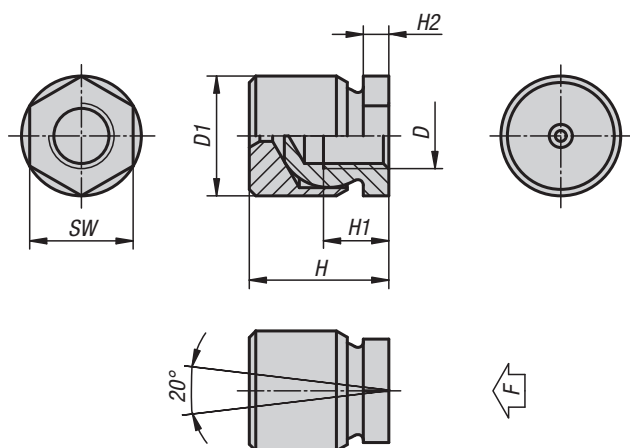
Ball element case-hardened steel.  
Thrust pad mild steel ETG 100.

### Version:

Black oxidised.

### Sample order:

K0304.10



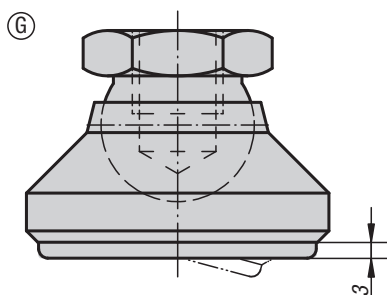
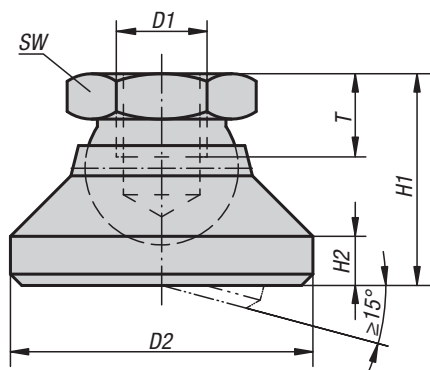
## KIPP Swivel feet

| Order No. | D   | D1 | H    | H1  | H2  | SW | F<br>max. N |
|-----------|-----|----|------|-----|-----|----|-------------|
| K0304.05  | M5  | 13 | 16,5 | 6,5 | 4   | 10 | 1620        |
| K0304.06  | M6  | 13 | 16,5 | 8,5 | 4   | 10 | 2330        |
| K0304.08  | M8  | 16 | 21   | 9   | 4   | 13 | 4150        |
| K0304.10  | M10 | 19 | 23   | 10  | 4   | 17 | 6480        |
| K0304.12  | M12 | 22 | 25,5 | 12  | 4,7 | 19 | 8320        |
| K0304.16  | M16 | 25 | 29,5 | 14  | 5   | 24 | 13940       |
| K0304.20  | M20 | 32 | 36   | 18  | 8,5 | 30 | 21000       |

# Swivel feet



(A) (B) (C) (D)


**Material:**

Form A: Thrust plate carbon steel, ball element free-cutting steel.

Form G: Ball element steel.

Form B: Stainless steel

Form C: Thrust plate POM, ball element free-cutting steel.

Form D: Thrust plate POM, ball element stainless steel

Anti-slip plate thermoplastic elastomer.

**Version:**

Form A, G: Ball element case-hardened, black oxidised.

Form G: Ball element case hardened, black oxidised with anti-slip plate

Form B: Bright.

Form C: Ball element case-hardened, black oxidised.

Form D: Ball element bright.

**Sample order:**

K0395.112

**Note:**

The anti-slip plate absorbs vibrations and prevents the swivel foot slipping.

**KIPP Swivel feet**

| Order No.<br>Form A | Order No.<br>Form B | D1  | D2 | H1 | H2  | T   | SW | Load rating<br>max. kN (static<br>load only) |
|---------------------|---------------------|-----|----|----|-----|-----|----|--|
| K0395.106           | K0395.306           | M6  | 20 | 15 | 2,5 | 8,5 | 10 | 10   |
| K0395.108           | K0395.308           | M8  | 25 | 18 | 4   | 9   | 13 | 18   |
| K0395.110           | K0395.310           | M10 | 32 | 22 | 5   | 10  | 17 | 20   |
| K0395.112           | K0395.312           | M12 | 40 | 26 | 6   | 12  | 19 | 35   |
| K0395.116           | K0395.316           | M16 | 50 | 32 | 7   | 14  | 24 | 45   |
| K0395.120           | K0395.320           | M20 | 60 | 42 | 8   | 18  | 30 | 55   |

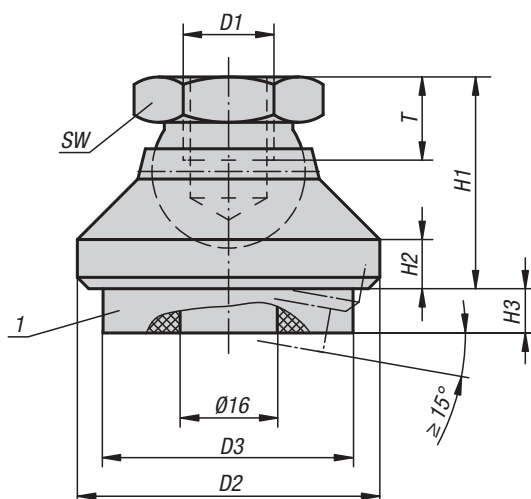
| Order No.<br>Form C | Order No.<br>Form D | D1  | D2 | H1 | H2  | T   | SW | Load rating<br>max. kN (static<br>load only) |
|---------------------|---------------------|-----|----|----|-----|-----|----|--|
| K0395.506           | K0395.206           | M6  | 20 | 15 | 2,5 | 8,5 | 10 | 4  |
| K0395.508           | K0395.208           | M8  | 25 | 18 | 4   | 9   | 13 | 7  |
| K0395.510           | K0395.210           | M10 | 32 | 22 | 5   | 10  | 17 | 10   |
| K0395.512           | K0395.212           | M12 | 40 | 26 | 6   | 12  | 19 | 18   |
| K0395.516           | K0395.216           | M16 | 50 | 32 | 7   | 14  | 24 | 20   |
| K0395.520           | K0395.220           | M20 | 60 | 42 | 8   | 18  | 30 | 22   |

| Order No.<br>Form G | D1  | D2 | H1 | H2 | T  | SW | Load rating<br>max. kN<br>(static load only) |
|---------------------|-----|----|----|----|----|----|--|
| K0395.410           | M10 | 32 | 22 | 5  | 10 | 17 | 12   |
| K0395.412           | M12 | 40 | 26 | 6  | 12 | 19 | 17   |
| K0395.416           | M16 | 50 | 32 | 7  | 14 | 24 | 20   |
| K0395.420           | M20 | 60 | 42 | 8  | 18 | 30 | 24   |

# K0420

## Swivel feet

with vibration absorption



### Material:

Steel version:  
Thrust plate carbon steel.  
Ball element free-cutting steel.  
Stainless steel version:  
Thrust plate and ball element stainless steel.

Damper plate PUR elastomere (Sylomer V12).

### Version:

Steel version:  
Thrust plate black oxidised.  
Ball element case-hardened, black oxidised.

Stainless steel version:  
bright.

Damper plate grey, glued in, anti-slip.  
Temp. range -30 °C to +70 °C.

### Sample order:

K0420.110

### Note:

The load rating given in the table is a recommendation of the permanent static load to which the damping element should be used. This static load corresponds to a surface pressure of 0.4 N/mm<sup>2</sup> at which the material achieves its optimum absorption properties. It is taken into account that under dynamic loading an additional load of up to 0.6 N/mm<sup>2</sup> may occur. The damper plate absorbs vibrations and prevents the swivel foot slipping.

For swivel feet without vibration absorption see article No. K0395.

### Drawing reference:

1) damper plate

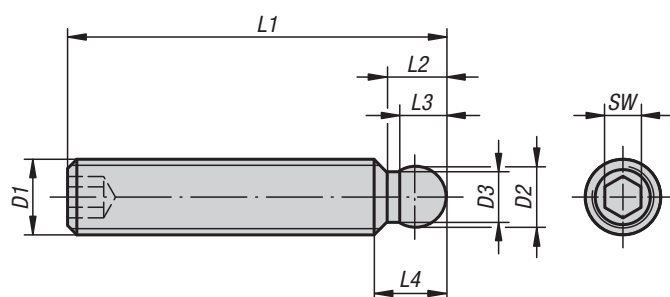
## KIPP Swivel feet with vibration absorption

| Order No. | Main material   | D1  | D2 | D3   | H1 | H2 | H3<br>by 0 / 0.4 / 0.6<br>N/mm <sup>2</sup> | T  | SW | Load rating N<br>(by 0.4 N/mm <sup>2</sup> ) |
|-----------|-----------------|-----|----|------|----|----|---|----|----|--|
| K0420.110 | Steel           | M10 | 32 | 30,5 | 22 | 5  | 8 / 6,8 / 5,9                               | 10 | 17 | 212  |
| K0420.112 | Steel           | M12 | 40 | 30,5 | 26 | 6  | 8 / 6,8 / 5,9                               | 12 | 19 | 212  |
| K0420.116 | Steel           | M16 | 50 | 40,5 | 32 | 7  | 8 / 6,8 / 5,9                               | 14 | 24 | 435  |
| K0420.120 | Steel           | M20 | 60 | 50   | 42 | 8  | 8 / 6,8 / 5,9                               | 18 | 30 | 705  |
| K0420.310 | Stainless steel | M10 | 32 | 30,5 | 22 | 5  | 8 / 6,8 / 5,9                               | 10 | 17 | 212  |
| K0420.312 | Stainless steel | M12 | 40 | 30,5 | 26 | 6  | 8 / 6,8 / 5,9                               | 12 | 19 | 212  |
| K0420.316 | Stainless steel | M16 | 50 | 40,5 | 32 | 7  | 8 / 6,8 / 5,9                               | 14 | 24 | 435  |
| K0420.320 | Stainless steel | M20 | 60 | 50   | 42 | 8  | 8 / 6,8 / 5,9                               | 18 | 30 | 705  |

# K0391

## Grub screws

with ball thrust point



### Material:

Grade 5.8.

### Version:

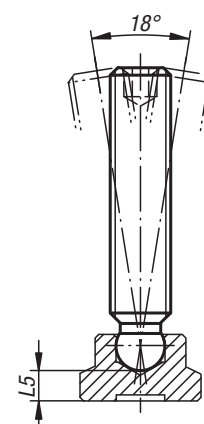
Black oxidised.

### Sample order:

K0391.06X50 (include length L1.)

### Note:

The grub screws are used in conjunction with a thrust pad K0393.

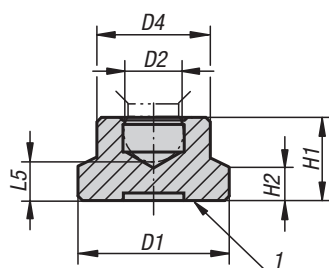


### KIPP Grub screws with ball thrust point

| Order No. | D1  | L1             | D2  | D3  | L2  | L3  | L4  | L5  | SW |
|-----------|-----|----------------|-----|-----|-----|-----|-----|-----|----|
| K0391.06X | M6  | 30/35/40/50    | 4,5 | 3,5 | 4,3 | 3,7 | 5,5 | 3,8 | 3  |
| K0391.08X | M8  | 35/40/45/50/60 | 6   | 4,8 | 5,8 | 4,8 | 7,4 | 4,4 | 4  |
| K0391.10X | M10 | 50/55/60/65/80 | 8   | 6,5 | 7,2 | 6,3 | 9   | 5   | 5  |
| K0391.12X | M12 | 60/65/70/80    | 8   | 6,5 | 7,2 | 6,3 | 9,8 | 6,9 | 6  |

**K0393**

# Thrust pads



## Material:

Steel.  
PA 6 plastic.

## Version:

Black oxidised.  
Black plastic.

## Sample order:

K0393.08

## Note:

Suitable for grub screws with ballend pin.

## Drawing reference:

1) thrust face



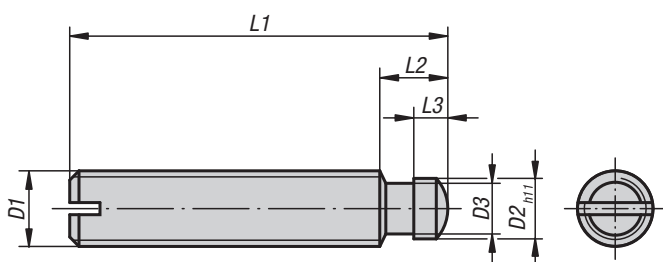
## KIPP Thrust pads

| Order No. | Form | Main material | D1 | D2  | D4  | H1  | H2  | L5  | Suitable for grub screws |
|-----------|------|---------------|----|-----|-----|-----|-----|-----|--------------------------|
| K0393.06  | A    | Steel         | 15 | 4,4 | 8,6 | 7,6 | 2,5 | 3,8 | M6                       |
| K0393.08  | A    | Steel         | 18 | 5,9 | 12  | 9   | 3,5 | 4,4 | M8                       |
| K0393.10  | A    | Steel         | 21 | 7,9 | 15  | 11  | 4   | 5   | M10                      |
| K0393.12  | A    | Steel         | 25 | 7,9 | 18  | 13  | 5   | 6,9 | M12                      |
| K0393.206 | A    | Polyamide     | 15 | 4,4 | 8,6 | 7,6 | 2,5 | 3,8 | M6                       |
| K0393.208 | B    | Polyamide     | 18 | 5,9 | 12  | 9   | 3,5 | 4,4 | M8                       |
| K0393.210 | C    | Polyamide     | 21 | 7,9 | 15  | 11  | 4   | 5   | M10                      |
| K0393.212 | C    | Polyamide     | 25 | 7,9 | 18  | 13  | 5   | 6,9 | M12                      |

# K0390

## Grub screws

with thrust point DIN 6332



### Material:

Steel or stainless steel

### Version:

Steel: thrust point case-hardened, black.  
Stainless steel: bright.

### Sample order:

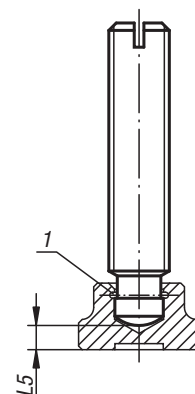
K0390.12X60 (include length L1.)

### Note:

The thrust journal of the grub screws per DIN 6332 is designed for direct clamping as well as for use in conjunction with a thrust pad K0392.

### Drawing reference:

1) snap ring



### KIPP Grub screws with thrust point DIN 6332

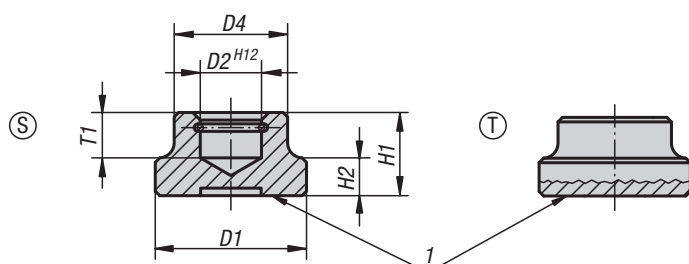
| Order No.<br>Steel | Order No.<br>Stainless steel | D1  | L1                | D2   | D3   | L2  | L3  | L5  |
|--------------------|------------------------------|-----|-------------------|------|------|-----|-----|-----|
| K0390.06X          | K0390.061X                   | M6  | 30/35/40/50       | 4,5  | 4    | 6   | 2,5 | 2,2 |
| K0390.08X          | K0390.081X                   | M8  | 35/40/45/50/60    | 6    | 5,4  | 7,5 | 3   | 3   |
| K0390.10X          | K0390.101X                   | M10 | 50/55/60/65/80    | 8    | 7,2  | 9   | 4,5 | 3,6 |
| K0390.12X          | K0390.121X                   | M12 | 60/65/70/80/100   | 8    | 7,2  | 10  | 4,5 | 4,5 |
| K0390.14X          | K0390.141X                   | M14 | 60/80/100         | 10   | 9    | 12  | 5   | 5   |
| K0390.16X          | K0390.161X                   | M16 | 65/70/80/100/125  | 12   | 11   | 12  | 5   | 5,3 |
| K0390.20X          | K0390.201X                   | M20 | 80/90/100/125/150 | 15,5 | 14,4 | 14  | 5,5 | 5,6 |



# K0392

## Thrust pads

DIN 6311 enhanced



### Material:

Steel: case-hardened. Snap ring spring steel.  
Stainless steel: bright. Snap ring stainless steel.

### Version:

Steel black oxidised.  
Stainless steel bright.

### Sample order:

K0392.12

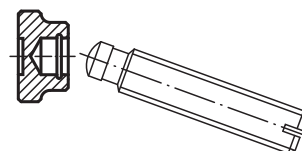
### Note:

When fitting the thrust pad, ensure that it is inclined as far as possible in the direction of the snap ring opening. The snap ring is supplied assembled.

### Drawing reference:

Form S: thrust pad with snap ring  
Form T: low design, large clamping surface with snap ring

1) thrust face

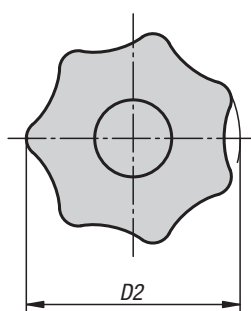
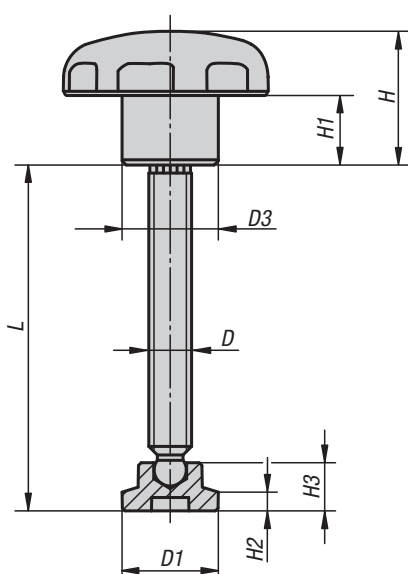


## KIPP Thrust pads DIN 6311 enhanced

| Order No.<br>Steel | Order No.<br>Stainless steel | Form | D1 | D2   | D4 | H1 | H2  | T1  | For grub screws<br>with trust point<br>DIN 6332 |
|--------------------|------------------------------|------|----|------|----|----|-----|-----|---|
| K0392.06           | K0392.061                    | S    | 12 | 4,6  | 10 | 7  | 2,5 | 4   | M6  |
| K0392.08           | K0392.081                    | S    | 16 | 6,1  | 12 | 9  | 4   | 5   | M8  |
| K0392.10           | K0392.101                    | S    | 20 | 8,1  | 15 | 11 | 5   | 6   | M10   |
| K0392.12           | K0392.121                    | S    | 25 | 8,1  | 18 | 13 | 7   | 7   | M12   |
| K0392.16           | K0392.161                    | S    | 32 | 12,1 | 22 | 15 | 7   | 7,5 | M16   |
| K0392.20           | K0392.201                    | S    | 40 | 15,6 | 28 | 16 | 9   | 8   | M20   |
| K0392.108          | -                            | T    | 25 | 6,1  | 12 | 8  | 4   | 4,5 | M8  |
| K0392.110          | -                            | T    | 32 | 8,1  | 18 | 10 | 6   | 6   | M10 / M12                                       |
| K0392.116          | -                            | T    | 40 | 12,1 | 22 | 12 | 7   | 7   | M16   |

**K0394**

# Thrust spindles



## Material:

Star grip: thermoplastic.

Bush: steel.

Grub screw: steel, grade 5.8.

Thrust pad: plastic PA 6.

## Version:

Star grip, thrust pad black.

Bush galvanized and blue passivated

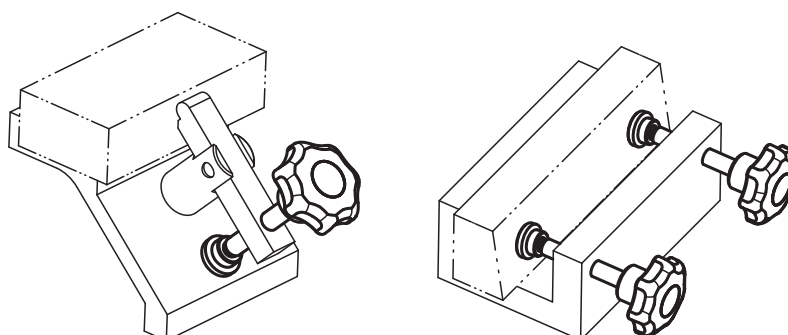
Grub screw black oxidised.

## Sample order:

K0394.06053

## Note:

The thrust pad is supplied loose. It can be lightly pressed onto the end of the spindle.



## KIPP Thrust spindles

| Order No.   | D   | D1 | D2 | D3 | L    | H  | H1 | H2  | H3  |
|-------------|-----|----|----|----|------|----|----|-----|-----|
| K0394.06053 | M6  | 15 | 32 | 14 | 53,8 | 20 | 10 | 2,5 | 7,6 |
| K0394.08064 | M8  | 18 | 40 | 18 | 64,6 | 25 | 13 | 3,5 | 9   |
| K0394.10070 | M10 | 21 | 50 | 22 | 70,1 | 32 | 17 | 4   | 11  |
| K0394.12086 | M12 | 25 | 63 | 26 | 86   | 40 | 21 | 5   | 13  |

## Notes

