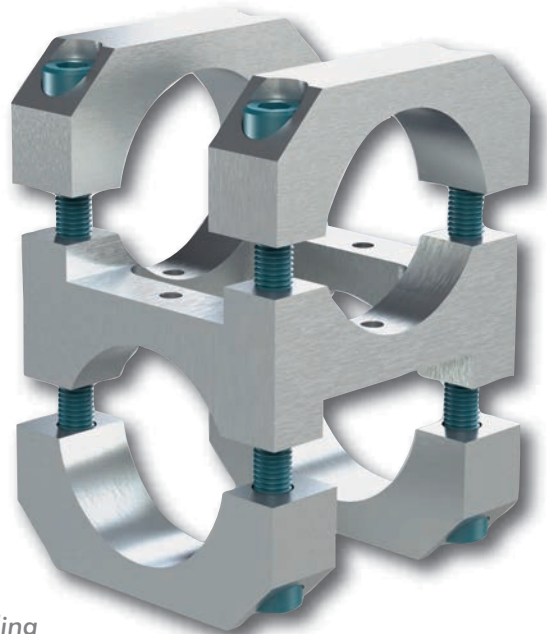


## New Round Tooling C-Clamp Transition Bracket Assemblies

**NEW** Look

**Same Great Performance**



*Patent Pending*

**Designed to fit both metric and imperial diameters**

Machined from robust 6061-T6 aluminum

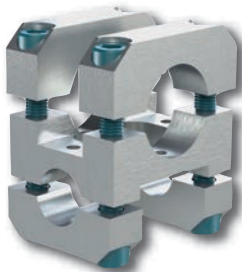
Maintains original max. static clamp load

Same center-to-center distance

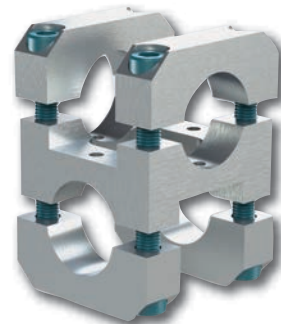
**New** Bracket Design is available in all sizes



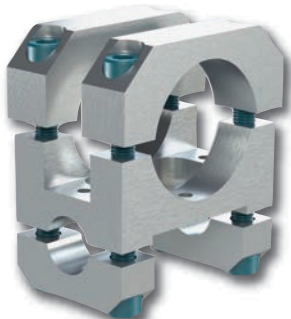
Ø25mm[1.00] to Ø25mm[1.00]  
**C-25M-25M-C**



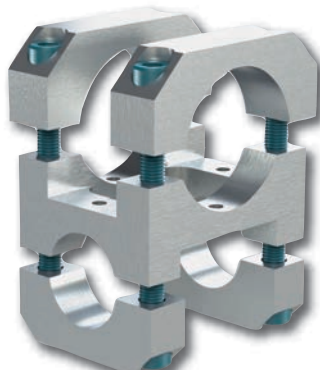
Ø25mm[1.00] to Ø40mm[1.50]  
**C-25M-40M-C**



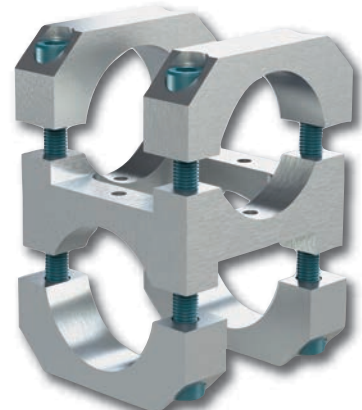
Ø40mm[1.50] to Ø40mm[1.50]  
**C-40M-40M-C**



Ø25mm[1.00] to Ø60mm[2.50]  
**C-25M-60M-C**

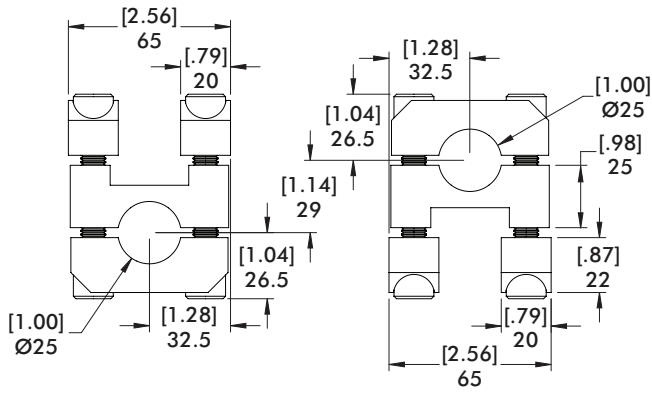


Ø40mm[1.50] to Ø60mm[2.50]  
**C-40M-60M-C**

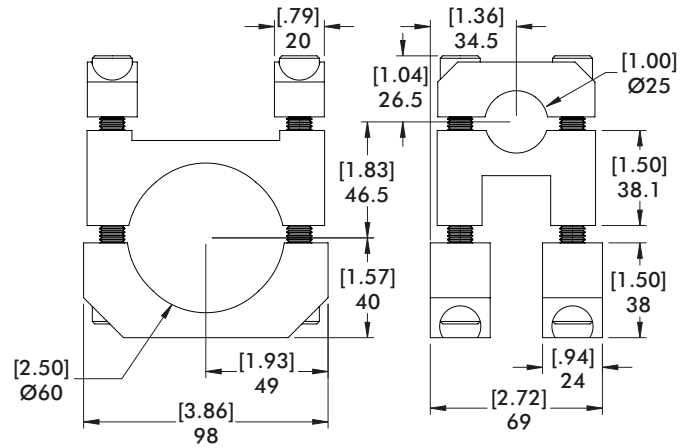


Ø60mm[2.50] to Ø60mm[2.50]  
**C-60M-60M-C**

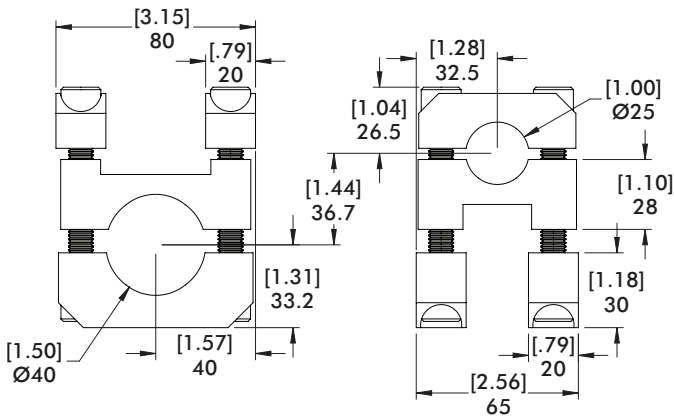
## C-Clamp Transition Brackets Dimensions



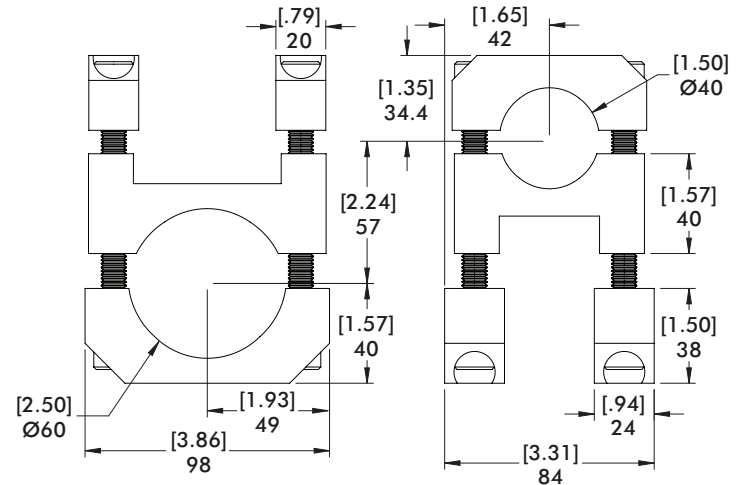
Ø25mm[1.00] to Ø25mm[1.00]  
**C-25M-25M-C**



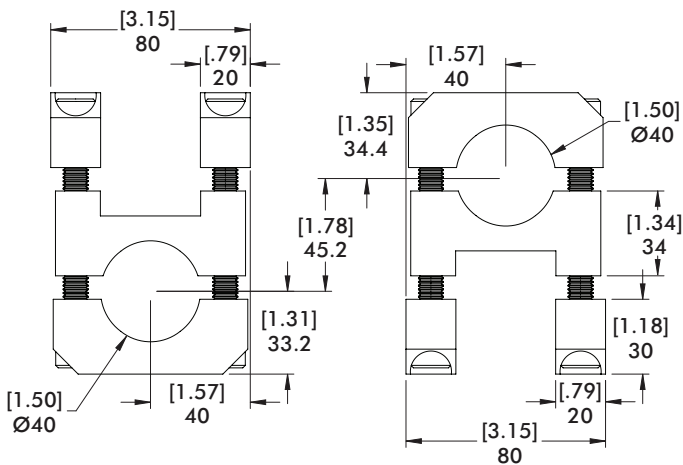
Ø25mm[1.00] to Ø60mm[2.50]  
**C-25M-60M-C**



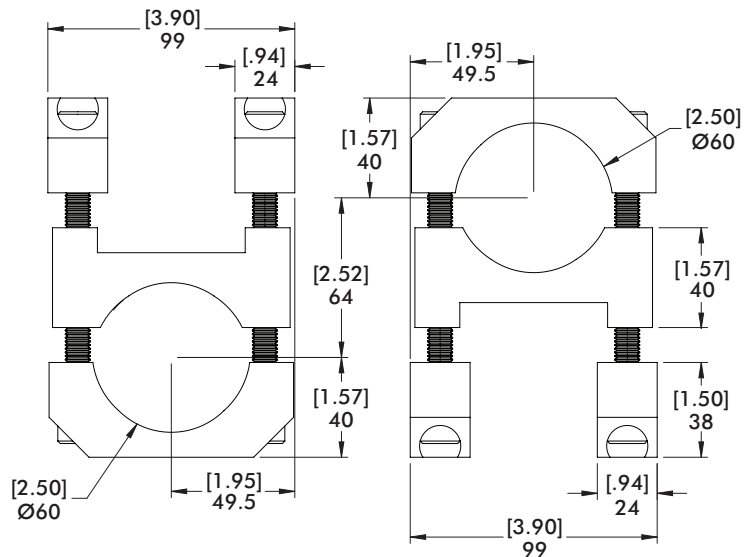
Ø25mm[1.00] to Ø40mm[1.50]  
**C-25M-40M-C**



Ø40mm[1.50] to Ø60mm[2.50]  
**C-40M-60M-C**



Ø40mm[1.50] to Ø40mm[1.50]  
**C-40M-40M-C**



Ø60mm[2.50] to Ø60mm[2.50]  
**C-60M-60M-C**