



Star Grips

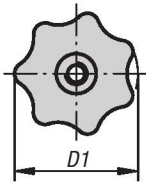
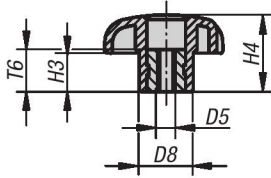
steel parts in stainless steel similar to DIN 6336



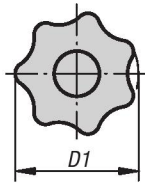
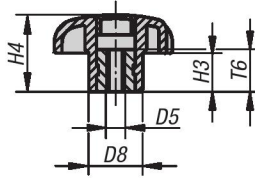
INCH Parts

METRIC Parts

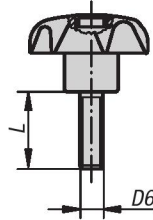
Style D
tapped through hole
without cap



Style K
tapped blind hole
with cap



Style L
with external thread



Material:

Black thermoplastic,
bushing and threaded bolt stainless steel 1.4305

Type:

Bushing and threaded bolt natural finish

Part Number Example:

K0154.4A17X10
(cap color bright yellow; include length L)

Note:

Δ Add the desired cap color here; no color code is required for black caps.

On request:

Other colors or designs, such as company logo.



KIPP Star Grips, steel parts in stainless steel similar to DIN 6336, internal thread, style D, inch

Item No.	Style	D1	D5	D8	H3	H4	T6
K0154.5A1	D	25	10-32	12	8	16	10
K0154.5A2	D	32	1/4-20	14	10	20	10
K0154.5A3	D	40	5/16-18	18	13	25	14
K0154.5A4	D	50	3/8-16	22	17	32	14
K0154.5A5	D	63	1/2-13	26	21	40	18



Star Grips

steel parts in stainless steel similar to DIN 6336

KIPP Star Grips, steel parts in stainless steel similar to DIN 6336, internal thread, style K, inch

Item No.	Style	D1	D5	D8	H3	H4	T6
K0154.2A1Δ	K	25	10-32	12	8	16	10
K0154.2A2Δ	K	32	1/4-20	14	10	20	10
K0154.2A3Δ	K	40	5/16-18	18	13	25	14
K0154.2A4Δ	K	50	3/8-16	22	17	32	14
K0154.2A5Δ	K	63	1/2-13	26	21	40	18

KIPP Star Grips, steel parts in stainless steel similar to DIN 6336, external thread, style L, inch

Item No.	Style	D1	D6	D8	H3	H4	L
K0154.4A1ΔX	L	25	10-32	12	8	16	10/20
K0154.4A2ΔX	L	32	1/4-20	14	10	20	20/30
K0154.4A3ΔX	L	40	5/16-18	18	13	25	20/40
K0154.4A4ΔX	L	50	3/8-16	22	17	32	20/40

KIPP Star Grips, steel parts in stainless steel similar to DIN 6336, internal thread, style D, metric

Item No.	Style	D1	D5	D8	H3	H4	T6
K0154.505	D	25	M5	12	8	16	10
K0154.506	D	32	M6	14	10	20	10
K0154.508	D	40	M8	18	13	25	14
K0154.510	D	50	M10	22	17	32	14
K0154.512	D	63	M12	26	21	40	18

KIPP Star Grips, steel parts in stainless steel similar to DIN 6336, internal thread, style K, metric

Item No.	Style	D1	D5	D8	H3	H4	T6
K0154.205Δ	K	25	M5	12	8	16	10
K0154.206Δ	K	32	M6	14	10	20	10
K0154.208Δ	K	40	M8	18	13	25	14
K0154.210Δ	K	50	M10	22	17	32	14
K0154.212Δ	K	63	M12	26	21	40	18

KIPP Star Grips, steel parts in stainless steel similar to DIN 6336, external thread, style L, metric

Item No.	Style	D1	D6	D8	H3	H4	L
K0154.405ΔX	L	25	M5	12	8	16	15/20
K0154.406ΔX	L	32	M6	14	10	20	20/30
K0154.408ΔX	L	40	M8	18	13	25	15/20/25/30/40/60
K0154.410ΔX	L	50	M10	22	17	32	25/30/40/50/60

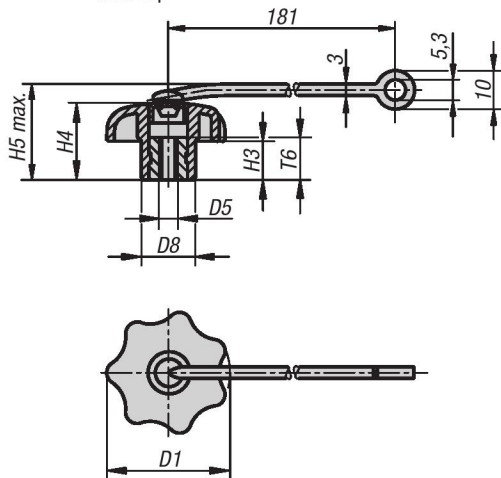
Star Grips with safety lanyard

similar to DIN 6336, steel parts in stainless steel

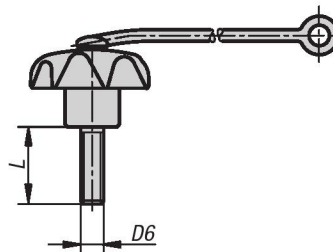
METRIC
Parts



Style KS
tapped blind hole
with cap



Style LS
with external thread



Material:

Grip thermoplastic.
Bushing and screw stainless steel 1.4305.
Safety lanyard elastic TPU.

Type:

Bushing and threaded bolt natural finish

Part Number Example:

K0154.7056X15
(cap color traffic red; include length L)

Note:

Δ Add the desired cap color here. No color code is required with a black cap color.

With the safety lanyard, the star grip can be attached to a base to make it unlosable.

The star grip remains in the immediate vicinity of the object.

This simplifies assembly / dismantling of the star grip and safer against loss.

Assembly:

Do not stretch the lanyard during assembly.

Make sure that the anchor is not too far from where the star grip is to be used.

Accessories:

The safety lanyard is also available as an accessory, see K0743.04190.



KIPP Star grips with safety lanyard, steel parts in stainless steel, internal thread, style KS, metric

Item No.	Style	D1	D5	D8	H3	H4	H5 max.	T6
K0154.605Δ	KS	25	M5	12	8	16	22	10
K0154.606Δ	KS	32	M6	14	10	20	26	10
K0154.608Δ	KS	40	M8	18	13	25	31	14
K0154.610Δ	KS	50	M10	22	17	32	38	14
K0154.612Δ	KS	63	M12	26	21	40	46	18

KIPP Star grips with safety lanyard, steel parts in stainless steel, external thread, style LS, metric

Item No.	Style	D1	D6	D8	H3	H4	H5 max.	L
K0154.705ΔX	LS	25	M5	12	8	16	22	15/20
K0154.706ΔX	LS	32	M6	14	10	20	26	20/30
K0154.708ΔX	LS	40	M8	18	13	25	31	15/20/25/30/40/60
K0154.710ΔX	LS	50	M10	22	17	32	38	25/30/40/50/60