

UNI lock clamping bolt

Item description/product images



Description

Material:

Steel.

Version:

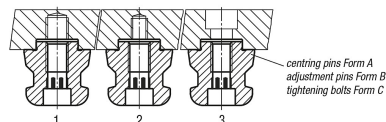
Hardened and black oxidised.

Contact faces ground.

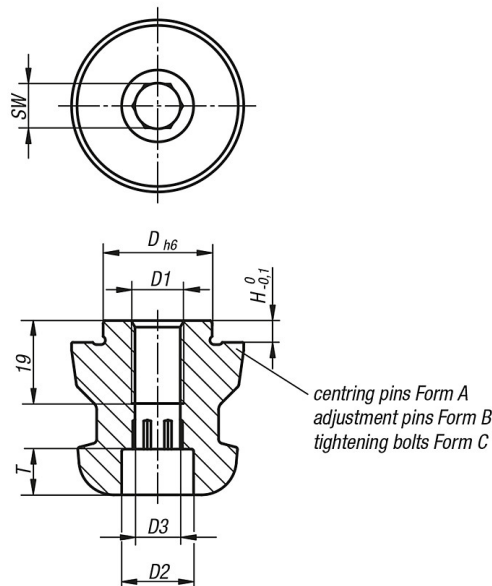
Note:

The UNI lock clamping bolt is suitable for clamping and positioning workpieces and fixtures. Clamping bolts are screwed onto the exchange element and adapted to the various basic modules.

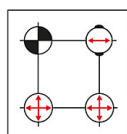
- 1 = fastening with grub screw DIN 913
- 2 = fastening with DIN 912 screw through the tightening bolt
- 3 = fastening with DIN 912 screw through the fixture or workpiece



Drawings



- Centring pins = Form A fixes in x and y axis (reference point)
- Adjustment pins = Form B fixes the free axis (bayonet pin)
- Tightening bolts = Form C Pins with undersize (no centring function, clamping only)



UNI lock clamping bolt

Overview of items

UNI lock clamping bolt

Order No.	Design	D	D1	D2	D3	H	T	SW
K0967.140160512	A	16	M12	16,5	10,3	5	10,5	10
K0967.140180512	A	18	M12	16,5	10,3	5	10,5	10
K0967.140200512	A	20	M12	16,5	10,3	5	10,5	10
K0967.140220516	A	22	M16	18,5	14,2	5	12,5	17
K0967.140240516	A	24	M16	18,5	14,2	5	12,5	17
K0967.140250512	A	25	M12	16,5	10,3	5	10,5	10
K0967.140250516	A	25	M16	18,5	14,2	5	12,5	17
K0967.140251012	A	25	M12	16,5	10,3	10	10,5	10
K0967.140251016	A	25	M16	18,5	14,2	10	12,5	17
K0967.240220516	B	22	M16	18,5	14,2	5	12,5	17
K0967.240240516	B	24	M16	18,5	14,2	5	12,5	17
K0967.240250512	B	25	M12	16,5	10,3	5	10,5	10
K0967.240250516	B	25	M16	18,5	14,2	5	12,5	17
K0967.240251012	B	25	M12	16,5	10,3	10	10,5	10
K0967.240251016	B	25	M16	18,5	14,2	10	12,5	17
K0967.340220516	C	22	M16	18,5	14,2	5	12,5	17
K0967.340240516	C	24	M16	18,5	14,2	5	12,5	17
K0967.340250512	C	25	M12	16,5	10,3	5	10,5	10
K0967.340250516	C	25	M16	18,5	14,2	5	12,5	17
K0967.340251012	C	25	M12	16,5	10,3	10	10,5	10
K0967.340251016	C	25	M16	18,5	14,2	10	12,5	17