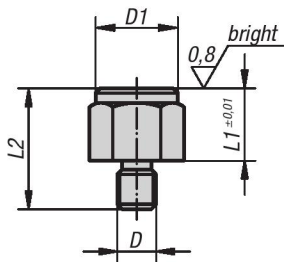




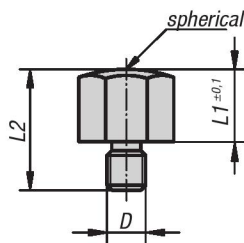
Positioning Feet

METRIC Parts

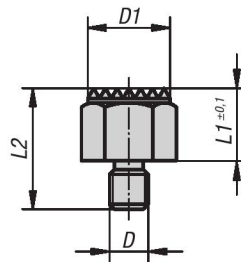
Style A with external thread and smooth face



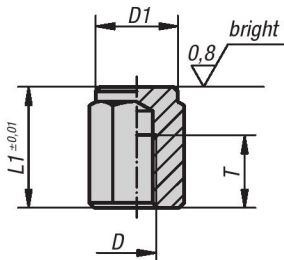
Style B with external thread and spherical surface



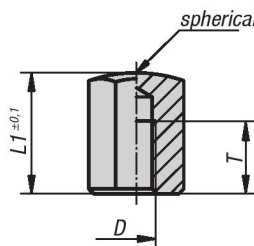
Style C with external thread and serrated surface



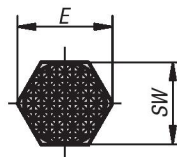
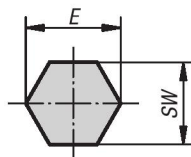
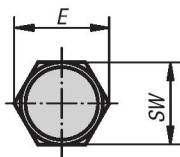
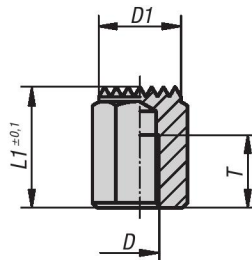
Style D with internal thread and smooth face



Style E with internal thread and spherical surface



Style F with internal thread and serrated surface

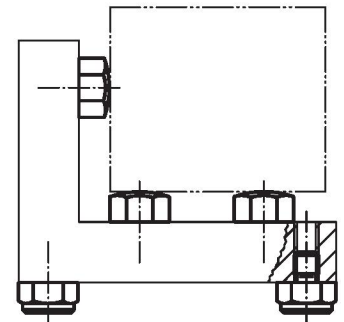


Material:
Free-cutting steel.

Type:
Case-hardened with black oxide finish.

Part Number Example:
K0298.215

Note:
Positioning Feet are used as supports, stops and thrust pads for fixtures and general machine and appliance construction.



KIPP Positioning Feet with external thread, metric

Item No. Style A	Item No. Style B	Item No. Style C	D	L1	D1	L2	E	SW	Tightening torque max. Nm
K0298.1101	K0298.2101	K0298.3101	M8	10	17/-/17	20	19,4	17	18
K0298.110	K0298.210	K0298.310	M12	10	22/-/22	24	25,2	22	60
K0298.115	K0298.215	K0298.315	M12	15	22/-/22	29	25,2	22	60
K0298.1151	K0298.2151	K0298.3151	M16	15	30/-/30	34	33	30	140
K0298.1201	K0298.2201	K0298.3201	M16	20	30/-/30	39	33	30	140

KIPP Positioning Feet with internal thread, metric

Item No. Style D	Item No. Style E	Item No. Style F	D	L1	D1	T	E	SW
K0298.415	K0298.515	K0298.615	M8	15	17/-/17	6	19,4	17
K0298.4251	K0298.5251	K0298.6251	M8	25	17/-/17	16	19,4	17
K0298.420	K0298.520	K0298.620	M12	20	22/-/22	10	25,2	22
K0298.425	K0298.525	K0298.625	M12	25	22/-/22	15	25,2	22
K0298.430	K0298.530	K0298.630	M12	30	22/-/22	20	25,2	22
K0298.440	K0298.540	K0298.640	M12	40	22/-/22	25	25,2	22
K0298.450	K0298.550	K0298.650	M12	50	22/-/22	25	25,2	22
K0298.4301	K0298.5301	K0298.6301	M16	30	30/-/30	20	33	30
K0298.4501	K0298.5501	K0298.6501	M16	50	30/-/30	25	33	30