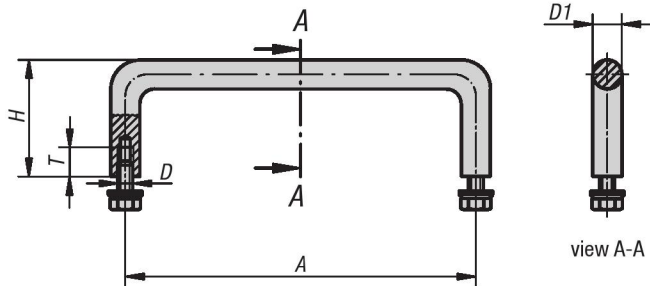


Pull Handles

stainless steel, round profile



Material:

Handle in stainless steel 1.4305;
fastening material 1.4301

Type:

Electropolished.

Part Number Example:

K0206.120

Note:

Stainless steel pull handles are used mainly on equipment in the medical and food industry as well as in laboratories and other hi-tech environments.

KIPP Pull Handles, stainless steel, round profile, metric

Item No.	A	D	D1	H	T	Load capacity N
K0206.100	100	M5x10	8	35	10	1000
K0206.120	120	M5x10	10	40	10	1000
K0206.250	250	M5x10	10	40	10	1000
K0206.350	350	M5x10	10	40	10	1000