





















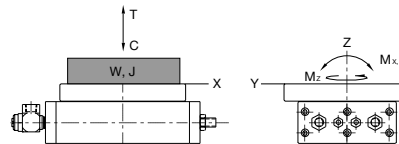
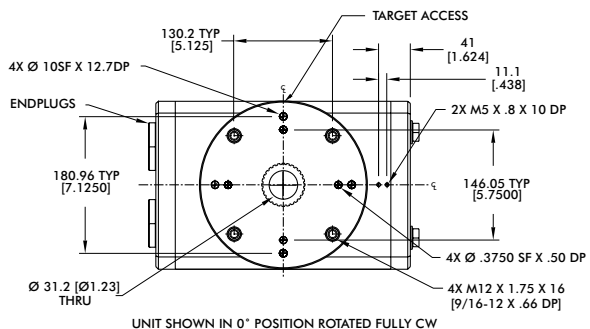






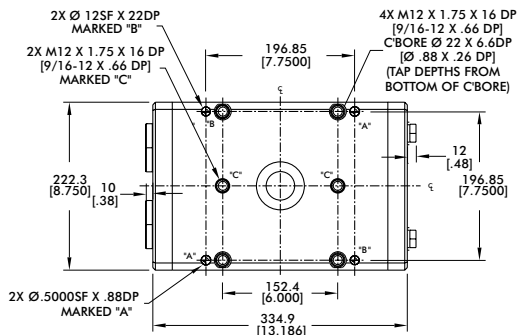
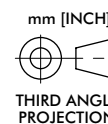
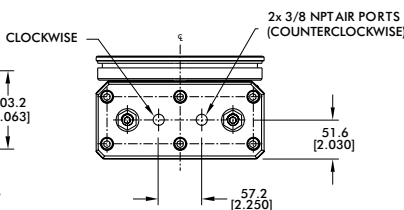
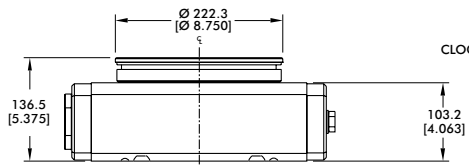
# RR-76

## Rotary Actuators | Dimensions and Technical Specifications



RR-76 Loading Information	Static
Maximum Tensile <b>T</b>	8896 N [2000 lbs]
Maximum Compressive <b>C</b>	20017 N [4500 lbs]
Maximum Moment <b>M<sub>x</sub></b>	452 Nm [4000 in-lbs]
Maximum Moment <b>M<sub>y</sub></b>	452 Nm [4000 in-lbs]
Maximum Payload <b>W<sup>i</sup></b>	91 kg [200 lbs]
Maximum Inertia <b>J<sup>i</sup></b>	0.5596 N-m-sec <sup>2</sup> [4.952 in-lbs-sec <sup>2</sup> ]

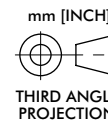
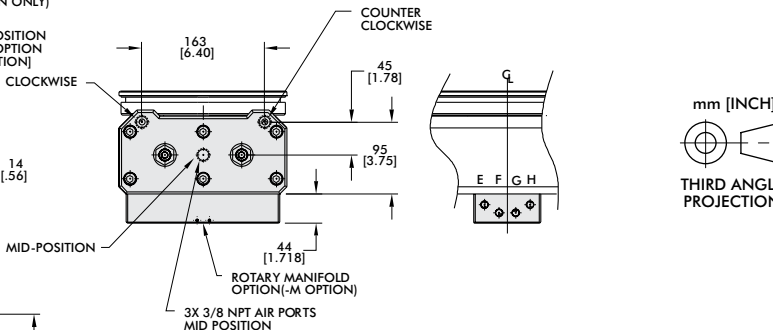
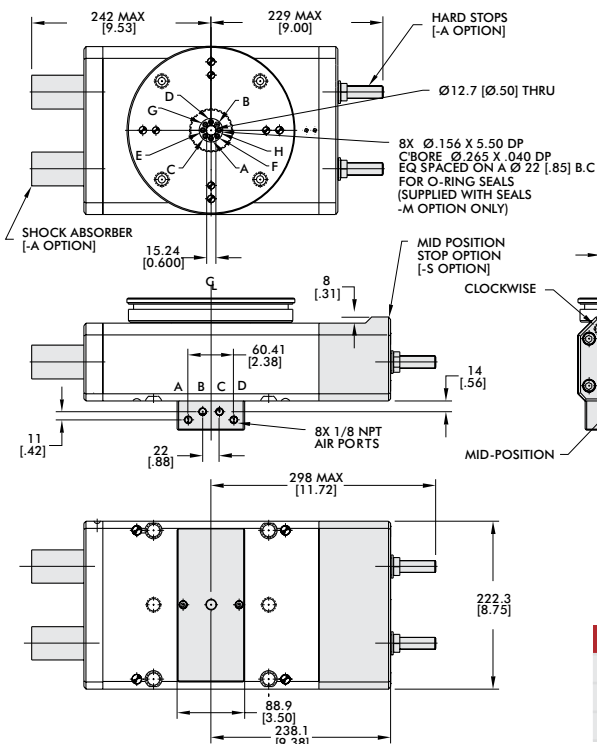
<sup>i</sup> Max. payload based on -A shock option.



Note: Shock Absorbers "Option -A" are recommended for all applications. All specifications provided are with this option.

Base Unit Seal Repair Kits	Order #
Viton® Seal Repair Kit	SLKT-167V

## Options Dimensions



Options Seal Repair Kits	Order #
Viton® Manifold Seal Repair Kit	-M SLKT-169V
Viton® Mid-Stop Seal Repair Kit	-S SLKT-168V
Buna-N Shock Seal Repair Kit	-A SLKT-179