

STRAIGHTLINE ACTION CLAMPS

Sizing and Application Chart

Overall Height mm [inch]		Overall Length mm [inch]		Overall Width mm [inch]		Suitable Application Area						Standard Material		Service Environment																
0 to 40 [0 to 1.57]	40 to 60 [1.57 to 2.36]	60 to 80 [2.36 to 3.15]	80 to 100 [3.15 to 3.94]	100 to 120 [3.15 to 4.72]	120 to 140 [4.72 to 5.51]	60 to 80 [2.36 to 3.15]	80 to 120 [2.36 to 4.72]	120 to 160 [4.72 to 6.30]	160 to 200 [6.30 to 7.87]	200 to 240 [7.87 to 9.45]	240 to 280 [9.45 to 11.02]	280+ [11.02+]	0 to 30 [0 to 1.18]	30 to 45 [1.18 to 1.77]	45 to 60 [1.77 to 2.36]	60 to 75 [2.36 to 2.95]	75 to 90 [2.95 to 3.54]	Welding	Assembly	Checking Fixtures	Machining	Woodworking	Food Processing	Duty Cycle	Steel	Stainless Steel	Toggle Lock Plus	Normal	Harsh/Dirty	
█																		○	●	●	●	●	○	○	✓	✓		✓		
█																		○	●	●	●	●	○	○	✓	✓		✓		
█																		○	●	●	●	●	○	○	✓	✓	✓	✓	✓	
																		●	●	●	●	●	○	○	✓	✓	✓	✓	✓	
																		●	●	●	●	●	○	○	✓	✓	✓	✓	✓	
																		●	●	●	●	●	○	○	✓	✓	✓	✓	✓	
																		○	●	●	●	●	○	○	✓	✓	✓	✓	✓	
																		○	●	●	●	●	○	○	✓	✓	✓	✓	✓	
																		○	●	●	●	●	○	○	✓	✓	✓	✓	✓	
																		○	●	●	●	●	○	○	✓	✓	✓	✓	✓	
																		○	●	●	●	●	○	○	✓	✓	✓	✓	✓	
																		○	●	●	●	●	○	○	✓	✓	✓	✓	✓	
																		○	●	●	●	●	○	○	✓	✓	✓	✓	✓	
																		○	●	●	●	●	○	○	✓	✓	✓	✓	✓	
																		○	●	●	●	●	○	○	✓	✓	✓	✓	✓	
																		○	●	●	●	●	○	○	✓	✓	✓	✓	✓	
																		○	●	●	●	●	○	○	✓	✓	✓	✓	✓	
																		○	●	●	●	●	○	○	✓	✓	✓	✓	✓	
																		○	●	●	●	●	○	○	✓	✓	✓	✓	✓	
																		○	●	●	●	●	○	○	✓	✓	✓	✓	✓	
																		○	●	●	●	●	○	○	✓	✓	✓	✓	✓	
																		○	●	●	●	●	○	○	✓	✓	✓	✓	✓	
																		○	●	●	●	●	○	○	✓	✓	✓	✓	✓	
																		○	●	●	●	●	○	○	✓	✓	✓	✓	✓	
																		○	●	●	●	●	○	○	✓	✓	✓	✓	✓	
																		○	●	●	●	●	○	○	✓	✓	✓	✓	✓	
																		○	●	●	●	●	○	○	✓	✓	✓	✓	✓	
																		○	●	●	●	●	○	○	✓	✓	✓	✓	✓	
																		○	●	●	●	●	○	○	✓	✓	✓	✓	✓	
																		○	●	●	●	●	○	○	✓	✓	✓	✓	✓	
																		○	●	●	●	●	○	○	✓	✓	✓	✓	✓	
																		○	●	●	●	●	○	○	✓	✓	✓	✓	✓	
																		○	●	●	●	●	○	○	✓	✓	✓	✓	✓	
																		○	●	●	●	●	○	○	✓	✓	✓	✓	✓	
																		○	●	●	●	●	○	○	✓	✓	✓	✓	✓	
																		○	●	●	●	●	○	○	✓	✓	✓	✓	✓	
																		○	●	●	●	●	○	○	✓	✓	✓	✓	✓	
																		○	●	●	●	●	○	○	✓	✓	✓	✓	✓	
																		○	●	●	●	●	○	○	✓	✓	✓	✓	✓	
																		○	●	●	●	●	○	○	✓	✓	✓	✓	✓	
																		○	●	●	●	●	○	○	✓	✓	✓	✓	✓	
																		○	●	●	●	●	○	○	✓	✓	✓	✓	✓	
																		○	●	●	●	●	○	○	✓	✓	✓	✓	✓	
																		○	●	●	●	●	○	○	✓	✓	✓	✓	✓	
																		○	●	●	●	●	○	○	✓	✓	✓	✓	✓	
																		○	●	●	●	●	○	○	✓	✓	✓	✓	✓	
																		○	●	●	●	●	○	○	✓	✓	✓	✓	✓	
																		○	●	●	●	●	○	○	✓	✓	✓	✓	✓	
																		○	●	●	●	●	○	○	✓	✓	✓	✓	✓	
																		○	●	●	●	●	○	○	✓	✓	✓	✓	✓	
																		○	●	●	●	●	○	○	✓	✓	✓	✓	✓	
																		○	●	●	●	●	○	○	✓	✓	✓	✓	✓	
																		○	●	●	●	●	○	○	✓	✓	✓	✓	✓	
																		○	●	●	●	●	○	○	✓	✓	✓	✓	✓	
																		○	●	●	●	●	○	○	✓	✓	✓	✓	✓	
																		○	●	●	●	●	○	○	✓	✓	✓	✓	✓	
																		○	●	●	●	●	○	○	✓	✓	✓	✓	✓	
																		○	●	●	●	●	○	○	✓	✓	✓	✓	✓	
																		○	●	●	●	●	○	○	✓	✓	✓	✓	✓	
																		○	●	●	●	●	○	○	✓	✓	✓	✓	✓	
																		○	●	●	●	●	○	○	✓	✓	✓	✓	✓	
																		○	●	●	●	●	○	○	✓	✓	✓	✓	✓	
																		○	●	●	●	●	○	○	✓	✓	✓	✓	✓	
																		○	●	●	●	●	○	○	✓	✓	✓	✓	✓	
																		○	●	●	●	●	○	○	✓	✓	✓	✓	✓	
																		○	●	●	●	●	○	○	✓	✓	✓	✓	✓	
																		○	●	●	●	●	○	○	✓	✓	✓	✓	✓	
																		○	●	●	●	●	○	○	✓	✓	✓	✓	✓	
																		○	●	●	●	●	○	○	✓	✓	✓	✓	✓	
																		○	●	●	●	●	○	○	✓	✓	✓	✓	✓	
																		○	●	●	●	●	○	○	✓	✓	✓	✓	✓	
																		○	●	●	●	●	○	○	✓	✓	✓	✓	✓	
																		○	●	●	●	●	○	○	✓	✓	✓	✓	✓	
																		○	●	●	●	●	○	○	✓	✓	✓	✓	✓	
																		○	●	●	●	●	○	○	✓	✓	✓	✓	✓	
			</																											

6001 SERIES

Straightline Action Clamps | Product Overview

Features:

- Heavier duty version of Model 601 with 50% more holding capacity
- Mounting pattern interchangeable with Model 601
- Allow handle to fall below mounting plane to lock in retracted position

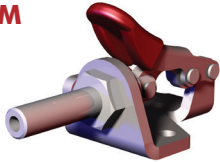
Applications:

- Assembly
- Testing
- Soldering
- Gluing

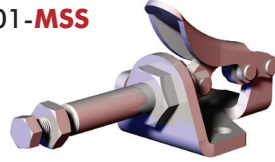
Also Available:

See page MC-ACC-1 for accessories

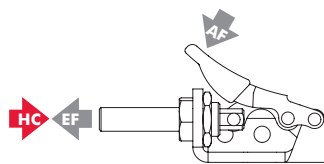
6001
6001-M



6001-SS
6001-MSS

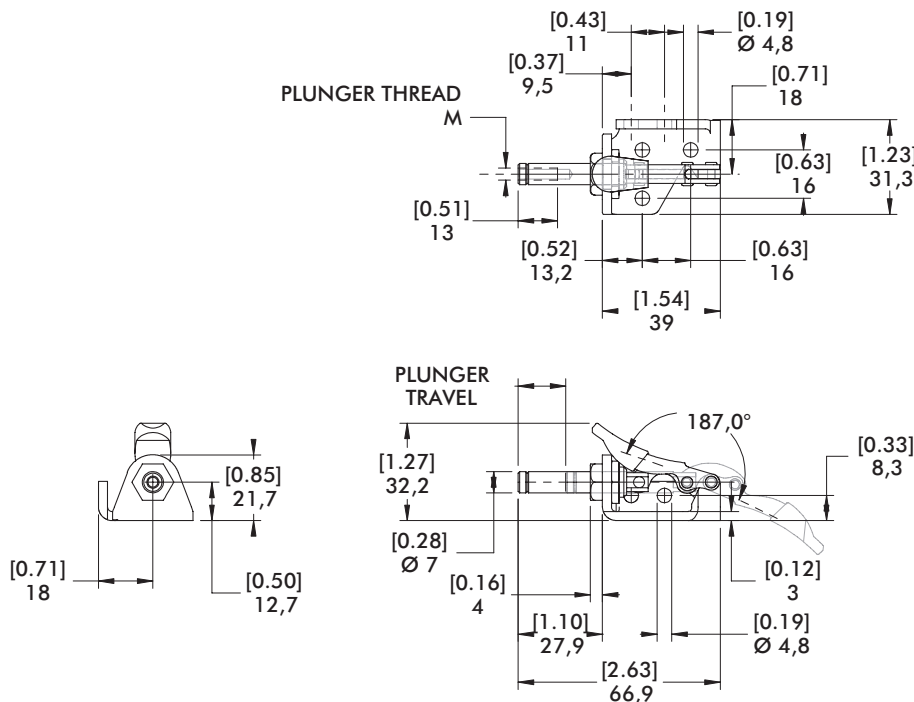


Technical Information, Holding Capacities, Standard Clamp Dimensions



Model	Max. Holding Capacity	Weight	EF:AF (pushing/pulling)	Plunger Travel	(M) Plunger Thread	Spindle (Recommended)	Spindle Included
6001					#8-32	105203	No
6001-M	[150 lbf] 670 N	[0.12lb] 0,05kg	14:1/25:1	[0.63] 16	M4	205208-M	
6001-SS					#8-32	205943	Yes
6001-MSS					M4	205943-M	

HC = Holding Capacity, EF = Exerting Force, AF = Applied Force



601 SERIES

Straightline Action Clamps | Product Overview

Features:

- Compact straight line action clamp

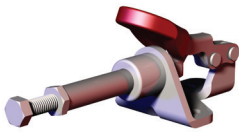
Applications:

- Assembly
- Testing
- Soldering
- Gluing

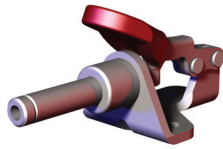
Also Available:

See page MC-ACC-1 for accessories

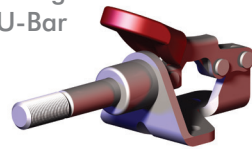
601



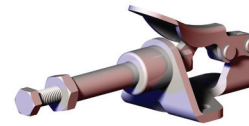
601-M



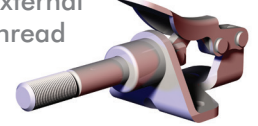
601-O
Straight Base
U-Bar



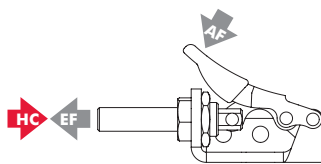
601-SS
Stainless steel



601-OSS ⓘ
Stainless steel
External
thread

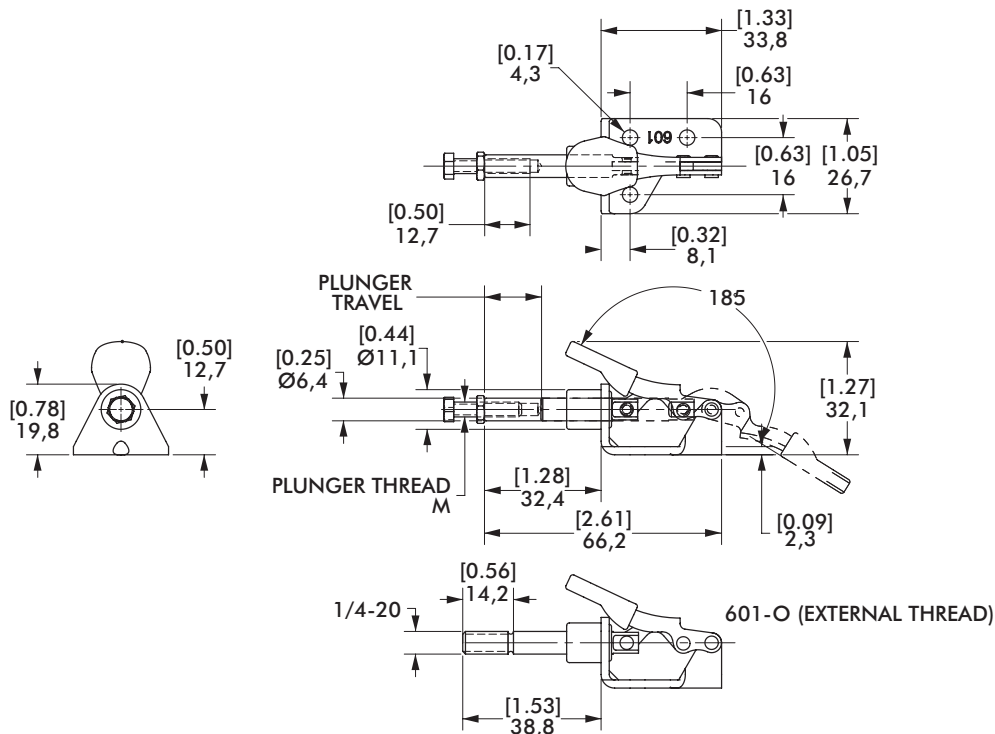


Technical Information, Holding Capacities, Standard Clamp Dimensions



Model	Max. Holding Capacity	Weight	EF:AF (pushing/pulling)	Plunger Travel (M)	Plunger Thread (M)	Spindle (Recommended)	Spindle Included
601					#8-32	105203	Yes
601-M					M4	205208-M	No
601-O	[100 lbf] 440 NXX	[0.09lb] 0,04kg	14:1/25:1	[0.63] 16	1/4-20	--	No
601-SS					#8-32	205943	Yes
601-OSS ⓘ					1/4-20	--	No

ⓘ This item is available upon request HC = Holding Capacity, EF = Exerting Force, AF = Applied Force



6015 SERIES

Straightline Action Clamps | Product Overview

Features:

- Smallest of the solid base Straight Line Action clamps
- Compact design combined with high holding capacity
- Allow handle to fall below mounting plane to lock in retracted position

Applications:

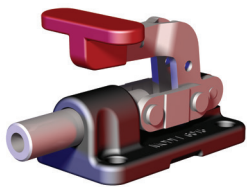
- Assembly
- Checking fixtures
- Tensioning devices

Also Available:

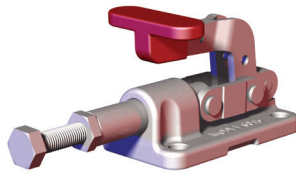
See page MC-ACC-1 for accessories

Covered under one or more U.S./International Patents

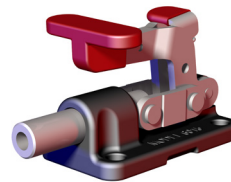
6015
6015-M



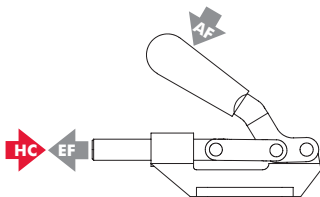
6015-SS,
6015-MSS
Stainless
Steel



6015-R,
6015-MR
with DE-STA-CO®
Toggle Lock
Plus



Technical Information, Holding Capacities



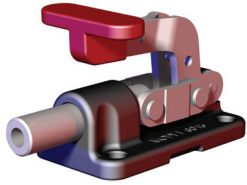
Model	Max. Holding Capacity	Weight	EF:AF (pushing/pulling)	Plunger Travel	(M) Plunger Thread	Recommended Spindle (Not Supplied)
6015	[560 lbf] 2500 N				1/4-20	205203
6015-M					M6	205203-M
6015-SS	[630 lbf] 2800 N	[0.35lb] 0,15kg	35:1	[0.70] 17,8	1/4-20	202943 (supplied)
6015-MSS	M6				202916-M (supplied)	
6015-R	[560 lbf] 2500 N				1/4-20	205203
6015-MR					M6	205203-M

HC = Holding Capacity, EF = Exerting Force, AF = Applied Force

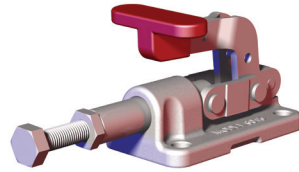
6015 SERIES

Straightline Action Clamps | Dimensions | 6015/-M/-SS/-MSS/-R/-MR

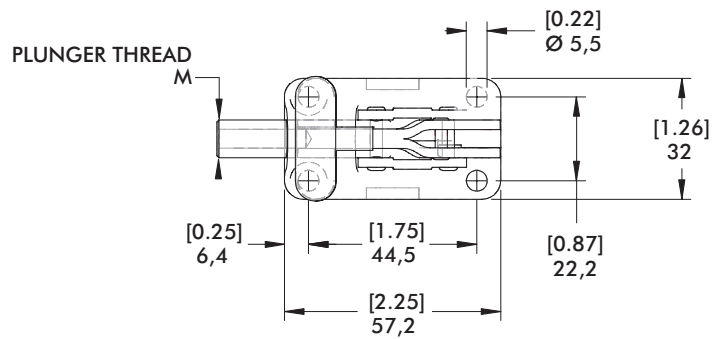
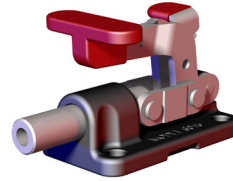
6015
6015-M



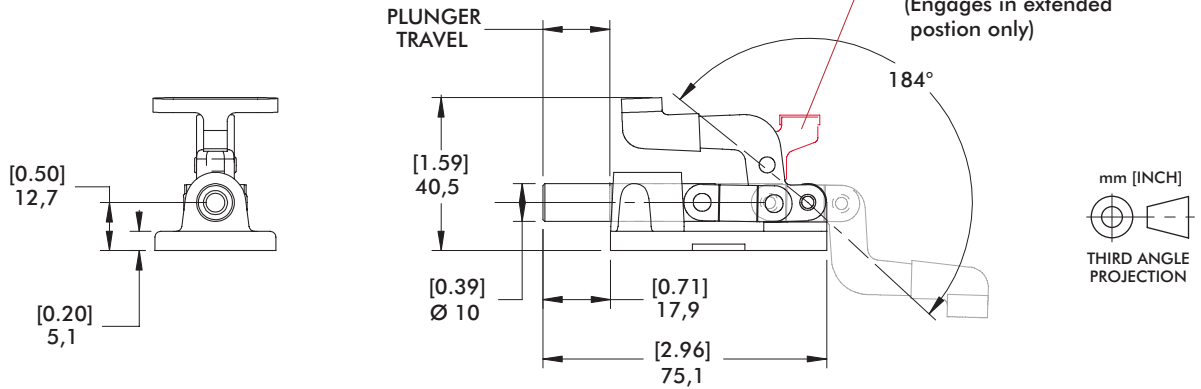
6015-SS,
6015-MSS
Stainless
Steel



6015-R,
6015-MR
with DE-STA-CO®
Toggle Lock Plus



DE-STA-CO®
TOGGLE LOCK
PLUS OPTION
6015-R / 6015-MR
(Engages in extended
position only)



603, 608 SERIES

Straightline Action Clamps | Product Overview

Features:

- Allow handle to rotate and fall below mounting plane to lock in retracted position
- Large holding capacities for their size
- Available with DE-STA-CO® Toggle Lock Plus

Applications:

- Assembly & test
- Checking fixtures
- Welding fixtures
- Tensioning devices

Also Available:

See page MC-ACC-1 for accessories

803 Pneumatic Toggle Clamp

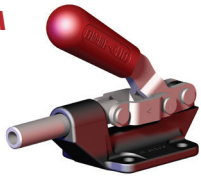
See page MC-PTC-27

803-ME Pneumatic Toggle Clamp

See page MC-PTC-27

Covered under one or more U.S./International Patents

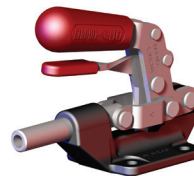
603
603-M



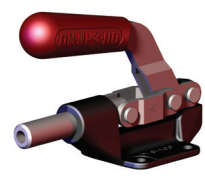
603-SS
603-MSS
Stainless
Steel



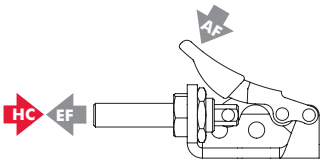
603-R
603-MR
with
DE-STA-CO®
Toggle Lock
Plus



608
608-M



Technical Information, Holding Capacities



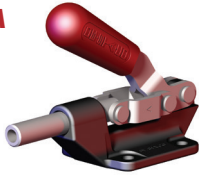
Model	Max. Holding Capacity	Weight	EF:AF (pushing/pulling)	Plunger Travel	(M) Plunger Thread	Recommended Spindle (Not Supplied)
603	[600 lbf] 2670 N				5/16-18	207203
603-M					M8	207203-M
603-SS	[840 lbf] 3740 N	[0.83lb] 0,38kg	23:1/34:1	[1.25] 31,8	5/16-18	207943
603-MSS					M8	207943-M (supplied)
603-R	[600 lbf] 2670 N				5/16-18	207203
603-MR					M8	207203-M
608	[850 lbf] 3780 N	[1.25lb] 0,57kg	44:1/50:1	[1.63] 41,3	3/8-16	210203
608-M					M10	210203-M

HC = Holding Capacity, EF = Exerting Force, AF = Applied Force

603, 608 SERIES

Straightline Action Clamps | Dimensions | 603/608/-M/-SS/-MSS/-R/-MR

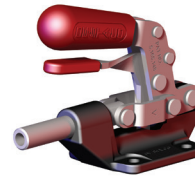
603
603-M



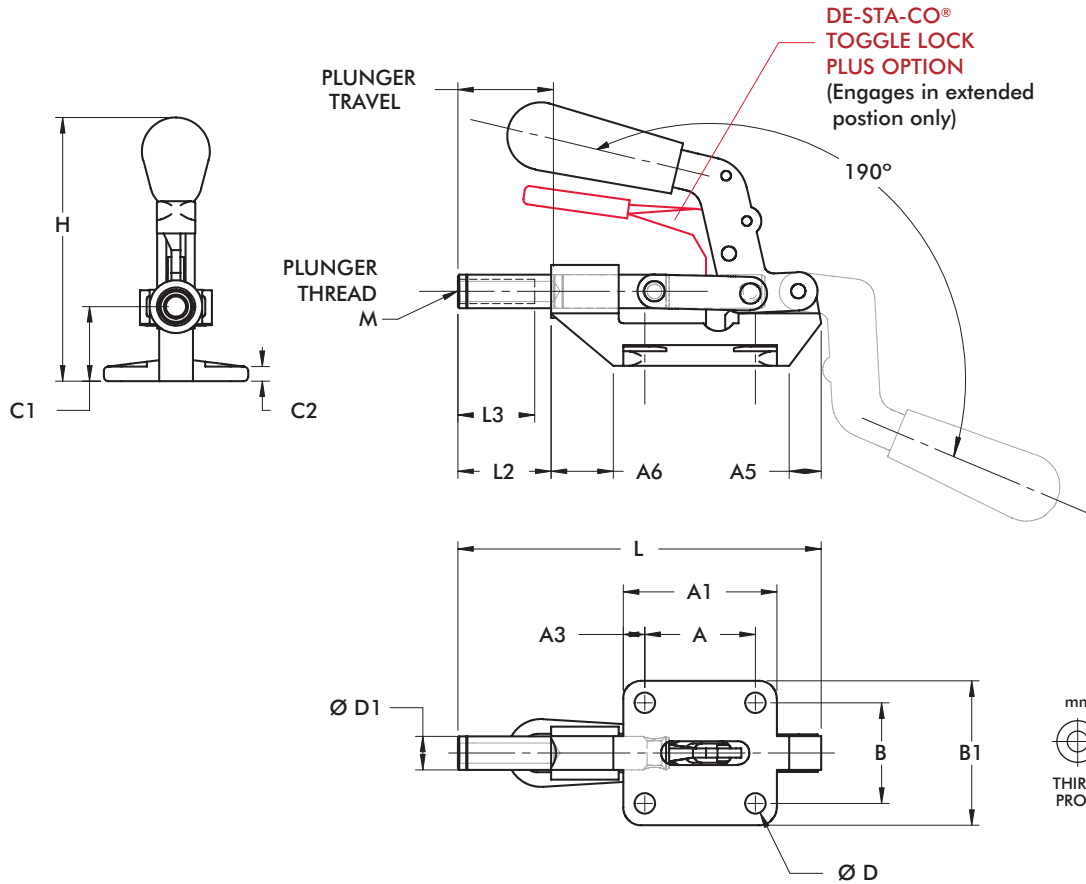
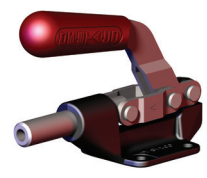
603-SS
603-MSS
Stainless Steel



603-R
603-MR
with
DE-STA-CO®
Toggle Lock
Plus



608
608-M



Model	A	A1	A3	A5	A6	B	B1	C1	C2	D	D1	H	L	L2	L3
603		[2.17]	[0.34]	[0.51]	[0.82]				[0.19]		[0.44]	[3.43]	[4.77]		
603-M		55	8,5	13	21				4,8		11,1	87	121,2		
603-SS	[1.44]			[0.54]	[0.65]	[1.31]	[1.88]	[0.97]	[0.25]	[0.27]	[0.47]	[3.28]	[4.69]	[1.28]	[1.00]
603-MSS	36,6	[2.20]	[0.30]	13,6	16,5	33,3	48	24,6	6,4	6,8	12	83,4	119,2	32,5	25,4
603-R				[0.51]	[0.82]						[0.44]	[3.43]	[4.77]		
603-MR				13	21						11,1	87	121,2		
608	[1.63]	[2.25]	[0.31]	[0.75]	[1.40]	[1.63]	[2.25]	[1.25]	[0.19]						
608-M	41,4	57,2	8	19	36	41,4	57,2	31,8	4,8	[0.33]	[0.62]	[4.04]	[6.00]	[1.59]	[1.25]
										8,4	15,8	102,6	152,3	40,5	31,8

Dimensions shown mm [inch]

605 SERIES

Straightline Action Clamps | Product Overview

Features:

- For push/pull clamping
- Allow handle to rotate and fall below mounting plane to lock in retracted position

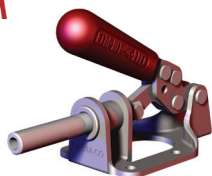
Applications:

- Assembly & test
- Woodworking
- Tensioning devices

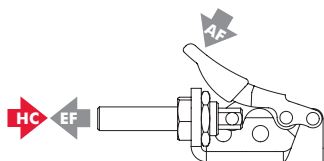
Also Available:

See page MC-ACC-1 for accessories
Reverse action version Model 615/615-M

605
605-M

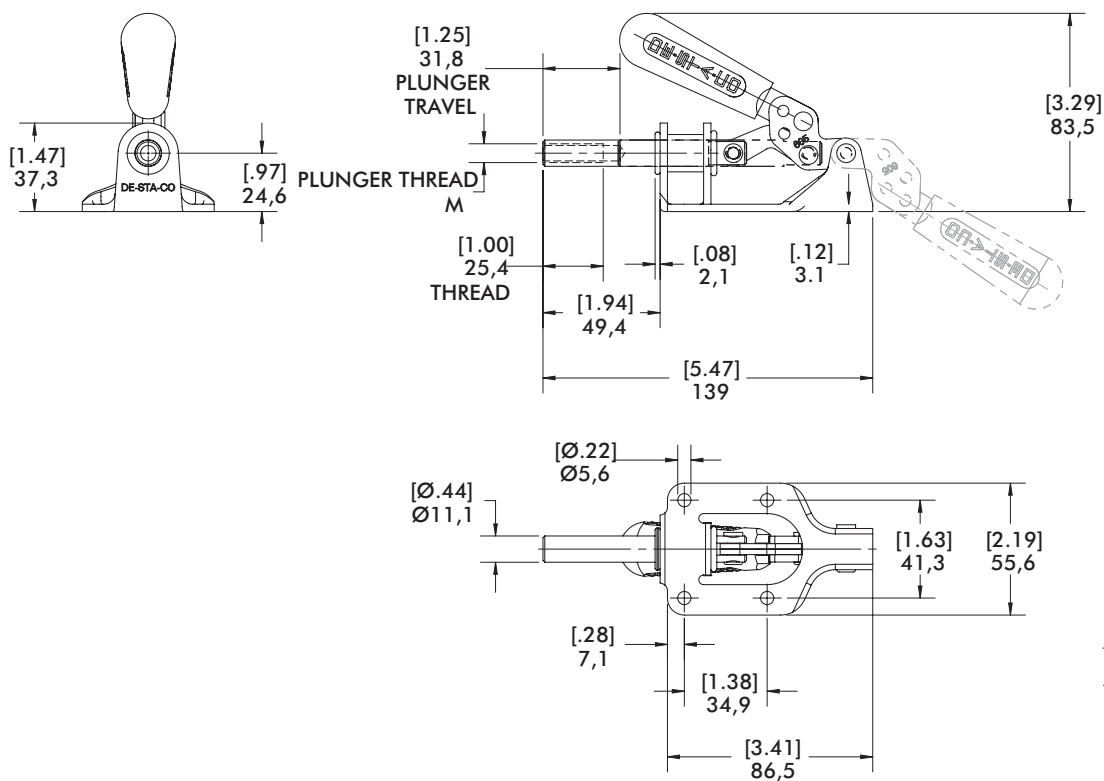


Technical Information, Holding Capacities, Standard Clamp Dimensions



Model	Max. Holding Capacity	Weight	EF:AF (pushing/pulling)	Plunger Travel	(M) Plunger Thread	Recommended Spindle (Not Supplied)
605	[300 lbf] 1330 N	[0.69lb] 0,31kg	45:1/40:1	[1.25] 31,8	5/16-18	207203
605-M					M8	207203-M

HC = Holding Capacity, EF = Exerting Force, AF = Applied Force



606 SERIES

Straightline Action Clamps | Product Overview

Features:

- Handle and linkage swivel 125° for mounting flexibility
- Narrow base for tight spaces
- Plunger locks in extended position only

Applications:

- Assembly & test
- Woodworking
- Tensioning devices

Also Available:

See page MC-ACC-1 for accessories

606
606-M



Mounting configuration:

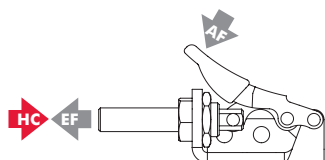


Bottom Mount



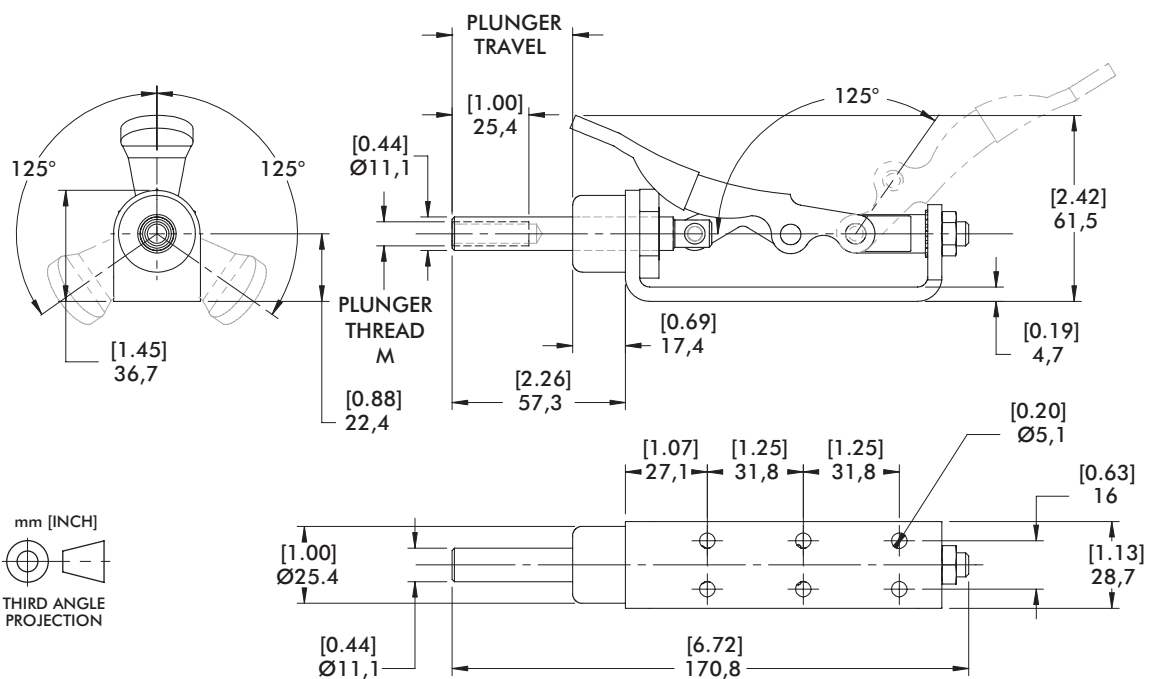
Side Mount

Technical Information, Holding Capacities, Standard Clamp Dimensions



Model	Max. Holding Capacity	Weight	EF:AF (pushing)	Plunger Travel	(M) Plunger Thread	Recommended Spindle (Not Supplied)
606	[450 lbf] 2000 N	[0.81lb] 0,37kg	33:1	40 [1.57]	5/16-18 M8	207203
606-M						207203-M

HC = Holding Capacity, EF = Exerting Force, AF = Applied Force



607 SERIES

Straightline Action Clamps | Product Overview

Features:

- Low profile and high holding capacity for its size
- Available with round or square plunger to resist torsional loads
- Allow handle to rotate and fall below mounting plane to lock in retracted position

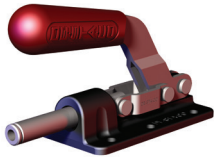
Applications:

- Assembly & test
- Welding
- Tensioning devices

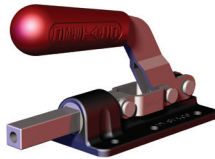
Also Available:

See page MC-ACC-1 for accessories

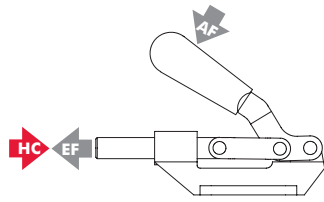
607
607-M



607-SQ
607-SQM
with Square
Plunger

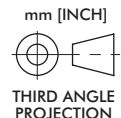
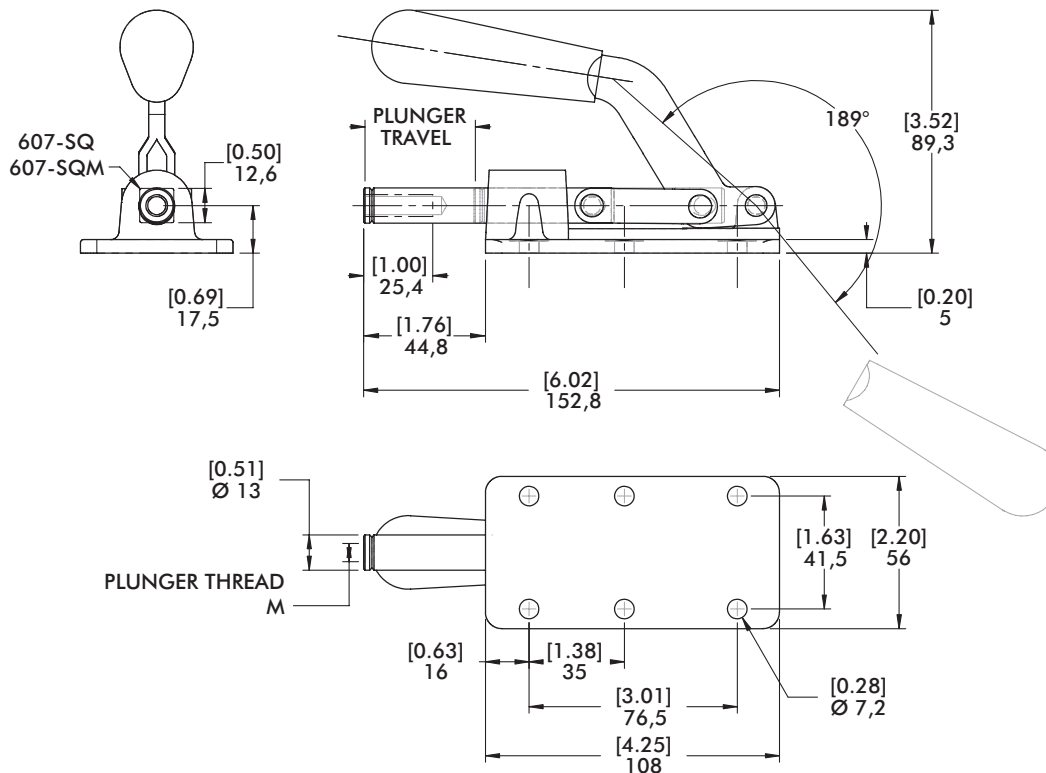


Technical Information, Holding Capacities, Standard Clamp Dimensions



Model	Max. Holding Capacity	Weight	EF:AF (pushing/pulling)	Plunger Travel	(M) Plunger Thread	Recommended Spindle (Not Supplied)
607					5/16-18	207203
607-M	[800 lbf] 3560 N	[1.63lb] 0,74kg	37:1/64:1	[1.63] 41,4	M8	207203-M
607-SQ					5/16-18	207203
607-SQM					M8	207203-M

HC = Holding Capacity, EF = Exerting Force, AF = Applied Force



609 SERIES

Straightline Action Clamps | Product Overview

Features:

- Low profile and high holding capacity for its size
- Flanged or straight base
- Allow handle to rotate and fall below mounting plane to lock in retracted position

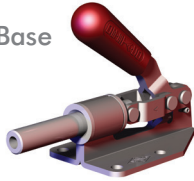
Applications:

- Assembly & test
- Welding
- Tensioning devices

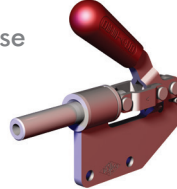
Also Available:

See page MC-ACC-1 for accessories

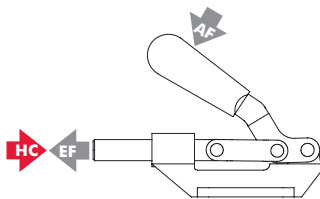
609
Flanged Base



609-B
Straight Base

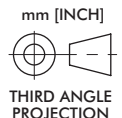
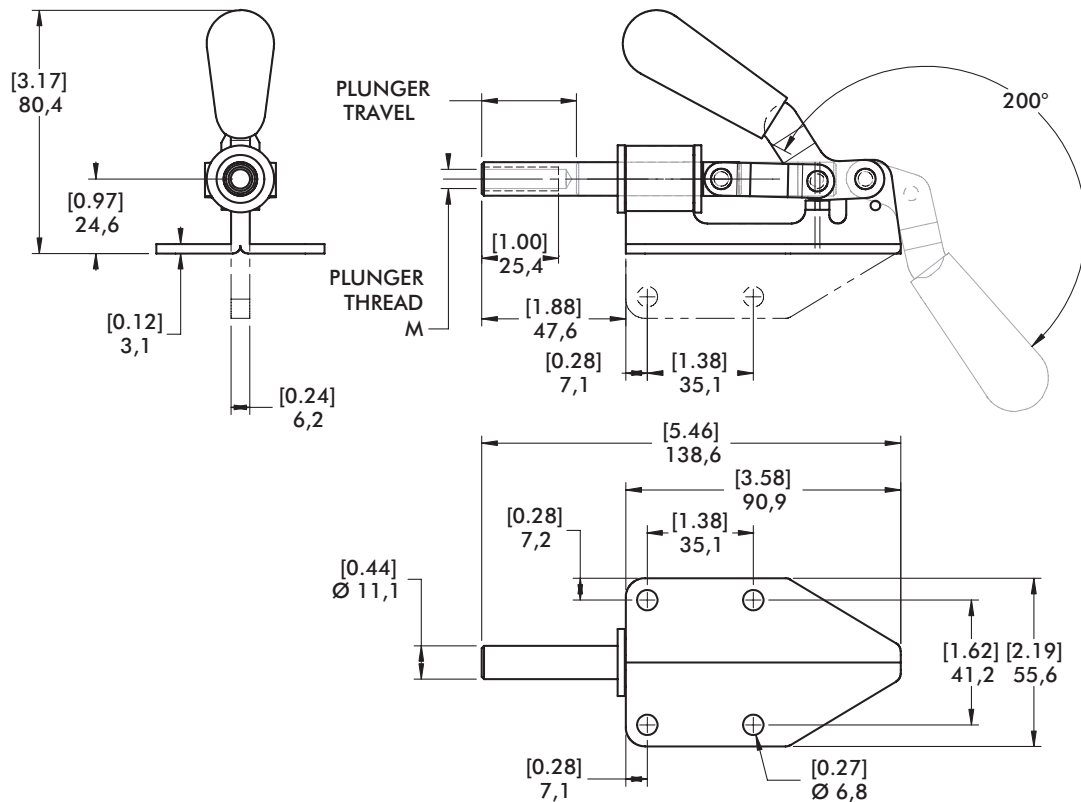


Technical Information, Holding Capacities, Standard Clamp Dimensions



Model	Max. Holding Capacity	Weight	EF:AF (pushing/pulling)	Plunger Travel	(M) Plunger Thread	Recommended Spindle (Not Supplied)
609	[300 lbf] 1330 N	[0.88lb] 0,40kg	36:1/47:1	[1.25] 31,8	5/16-18	207203
609-B						

HC = Holding Capacity, EF = Exerting Force, AF = Applied Force



610 SERIES

Straightline Action Clamps | Product Overview

Features:

- For push/pull clamping
- Allow handle to rotate and fall below mounting plane to lock in retracted position

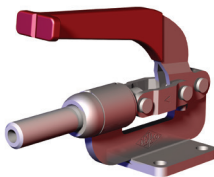
Applications:

- Assembly & test
- Woodworking
- Tensioning devices

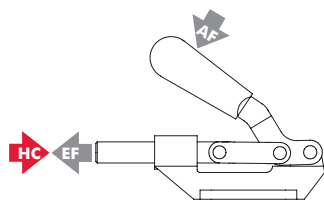
Also Available:

See page MC-ACC-1 for accessories

610
610-M

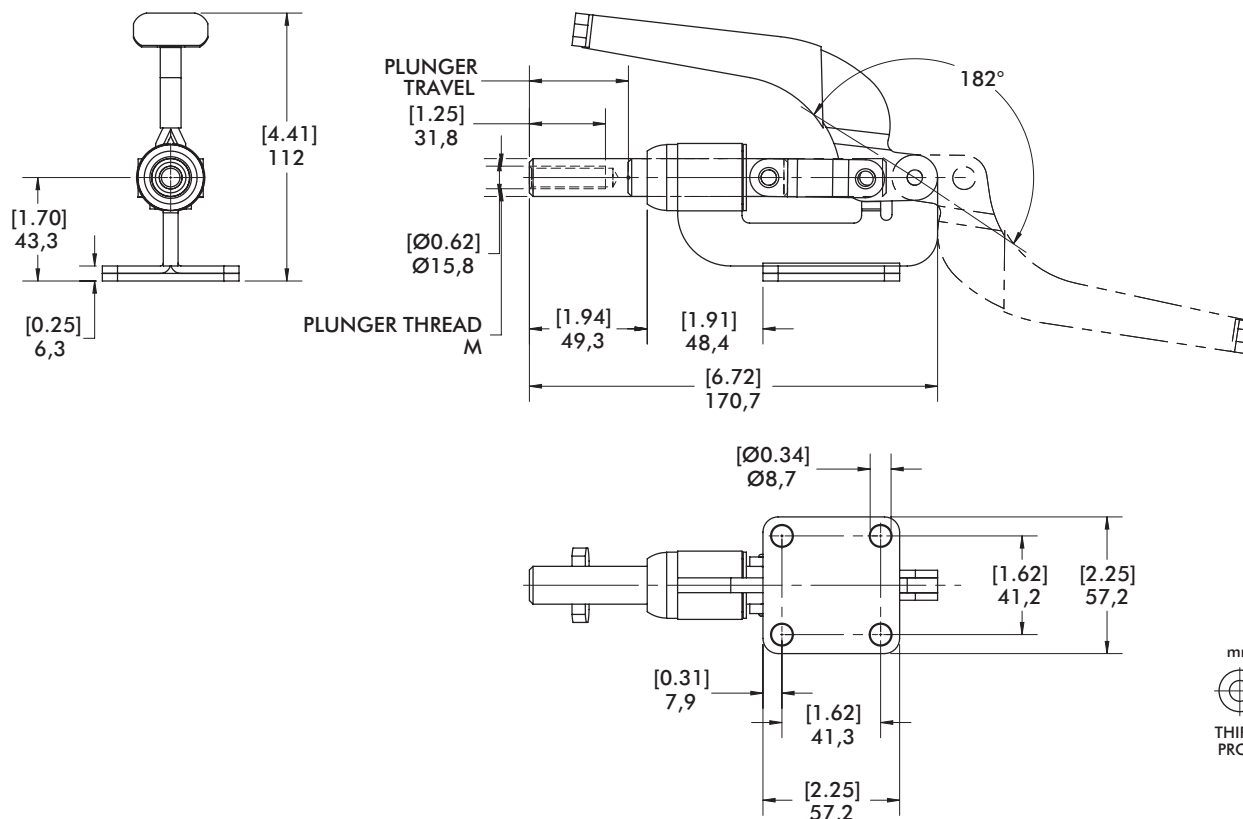


Technical Information, Holding Capacities, Standard Clamp Dimensions



Model	Max. Holding Capacity	Weight	EF:AF (pushing/pulling)	Plunger Travel	(M) Plunger Thread	Recommended Spindle (Not Supplied)
610	[800 lbf]	[1.69lb]	51:1/70:1	[1.63]	3/8-16	210203
610-M	3560 N	0,77kg		41,4	M10	210203-M

HC = Holding Capacity, EF = Exerting Force, AF = Applied Force



615 SERIES

Straightline Action Clamps | Product Overview

Features:

- Reverse handle action.
- Plunger locks in the extended position only as the handle is moved downward

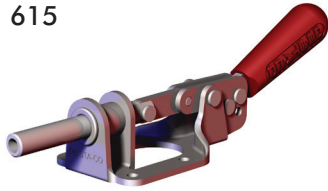
Applications:

- Assembly & test
- Woodworking
- Tensioning devices

Also Available:

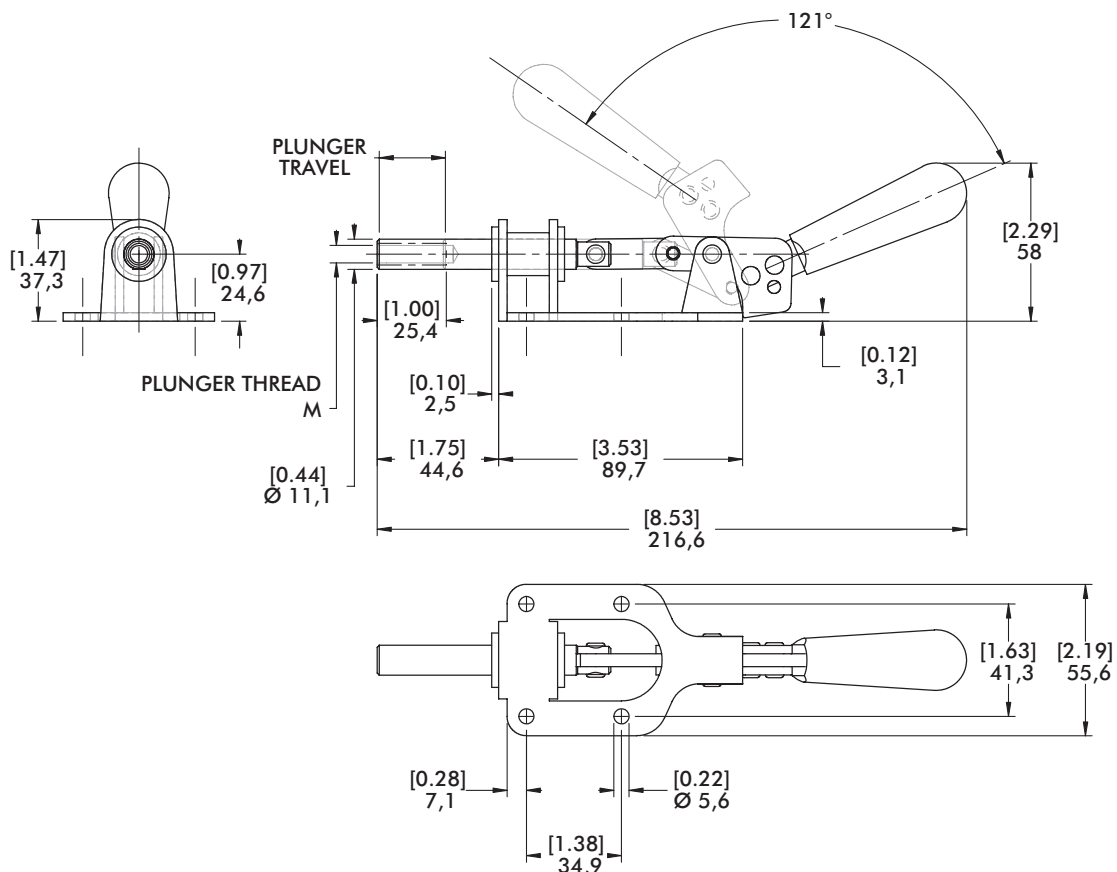
See page MC-ACC-1 for accessories

615



Technical Information, Holding Capacities, Standard Clamp Dimensions

Model	Max. Holding Capacity	Weight	Plunger Travel (M)	Plunger Thread	Recommended Spindle (Not Supplied)
615	[300 lbf] 1330 N	[0.69lb] 0,31kg	[0.97] 24,6	5/16-18	207203



620 SERIES

Straightline Action Clamps | Product Overview

Features:

- Reverse handle action
- Plunger locks in the extended position only as the handle is moved downward

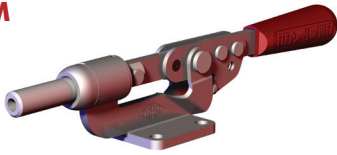
Applications:

- Assembly & test
- Woodworking
- Tensioning devices

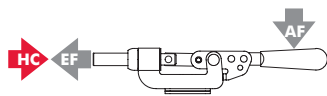
Also Available:

See page MC-ACC-1 for accessories

620
620-M

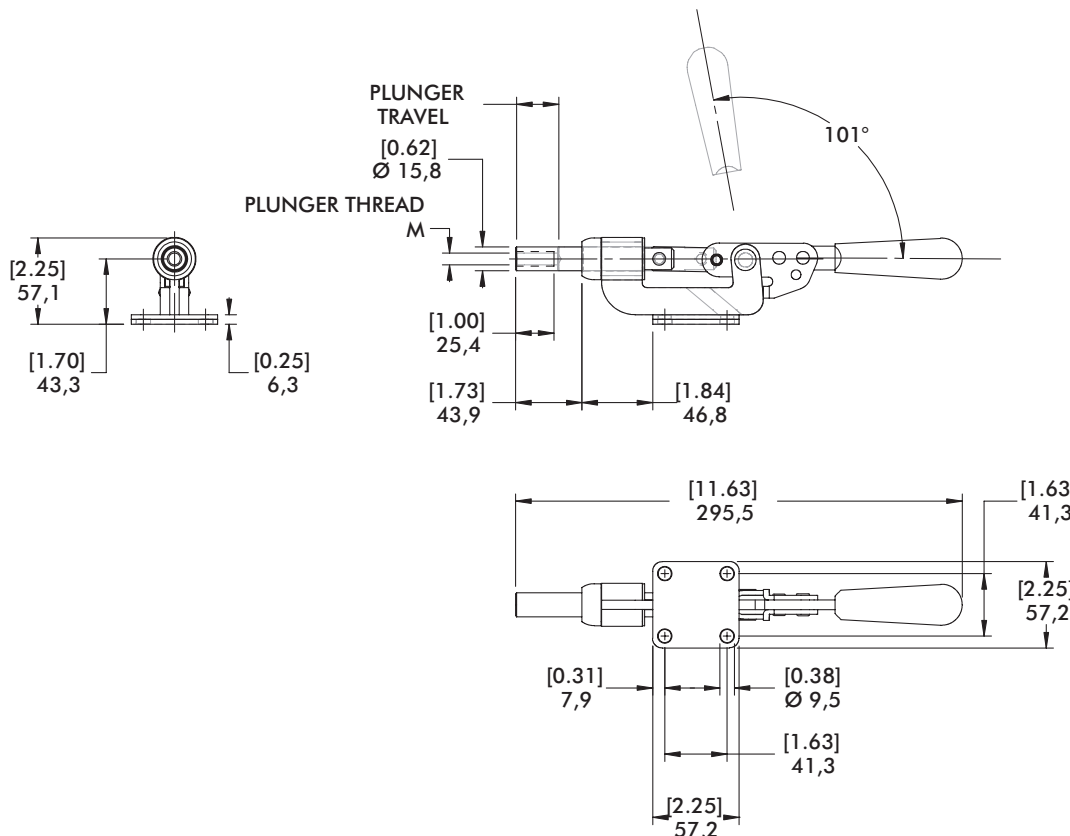


Technical Information, Holding Capacities, Standard Clamp Dimensions



Model	Max. Holding Capacity	Weight	EF:AF (pushing/pulling)	Plunger Travel	(M) Plunger Thread	Recommended Spindle (Not Supplied)
620	[600 lbf] 2670 N	[1.50lb] 0,68kg	44:1	[1.11] 28,2	3/8-16	210203
620-M					M10	210203-M

HC = Holding Capacity, EF = Exerting Force, AF = Applied Force



630 SERIES

Straightline Action Clamps | Product Overview

Features:

- For push/pull clamping
- Allow handle to rotate and fall below mounting plane to lock in retracted position
- Available with DE-STA-CO® Toggle Lock Plus

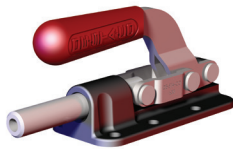
Applications:

- Assembly & test
- Welding
- Tensioning devices

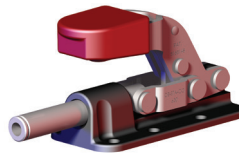
Also Available:

See page MC-ACC-1 for accessories
830, 830-ME Pneumatic Toggle Clamp
(See page MC-PTC-27)

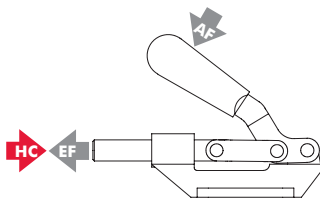
630
630-M



630-R
630-MR
with
DE-STA-CO®
Toggle Lock
Plus

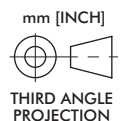
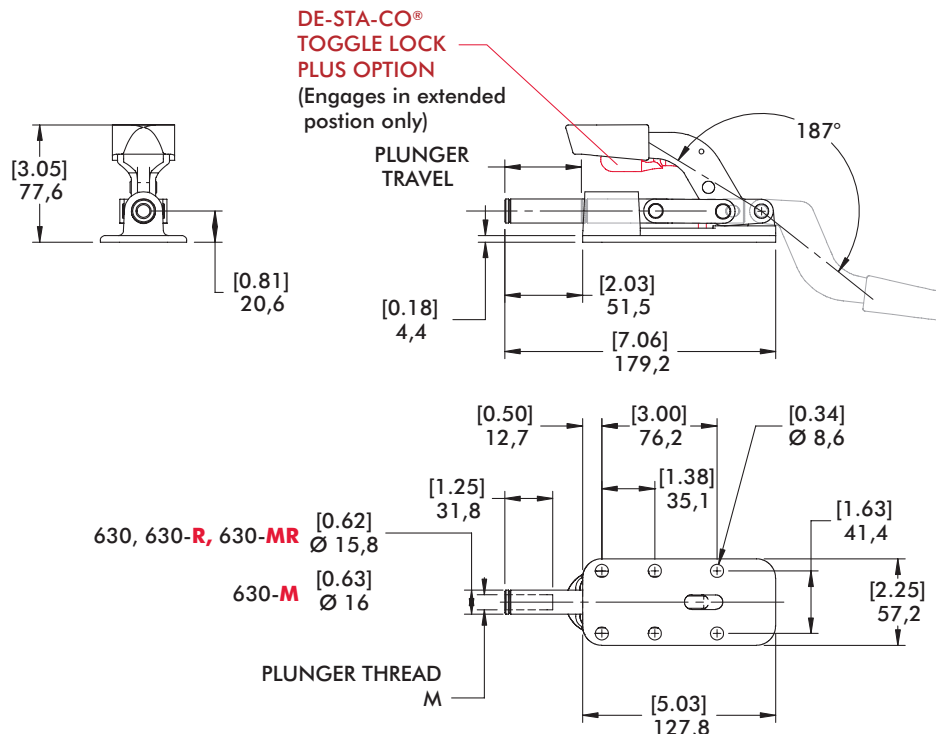


Technical Information, Holding Capacities, Standard Clamp Dimensions



Model	Max. Holding Capacity	Weight	EF:AF (pushing/pulling)	Plunger Travel	(M) Plunger Thread	Recommended Spindle (Not Supplied)
630					3/8-16	210203
630-M	[2,500 lbf] 11100 N	[1.90lb] 0,89kg	36:1/23:1	[2.00] 50,8	M10	210203-M
630-R					3/8-16	210203
630-MR					M10	210203-M

HC = Holding Capacity, EF = Exerting Force, AF = Applied Force



640 SERIES

Straightline Action Clamps | Product Overview

Features:

- For heavy duty push/pull clamping
- Longest stroke of our Straight Line Action Clamps
- Allow handle to rotate and fall below mounting plane to lock in retracted position
- Available with DE-STA-CO® Toggle Lock Plus

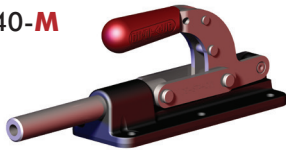
Applications:

- Assembly & test
- Welding
- Tensioning devices

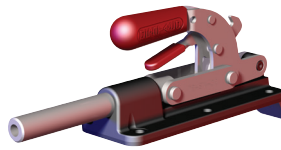
Also Available:

See page MC-ACC-1 for accessories

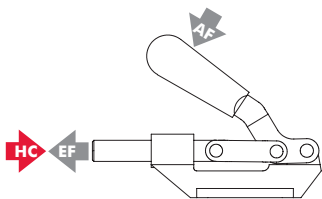
640
640-M



640-R
640-MR
with
DE-STA-CO®
Toggle Lock
Plus

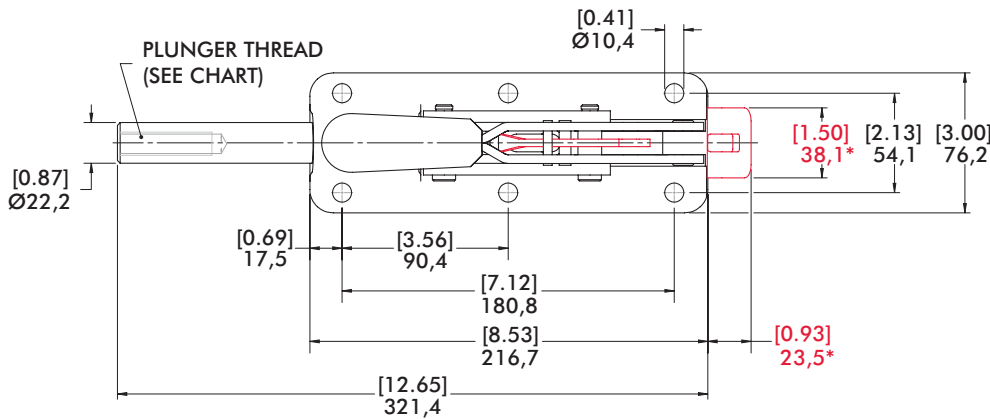


Technical Information, Holding Capacities, Standard Clamp Dimensions

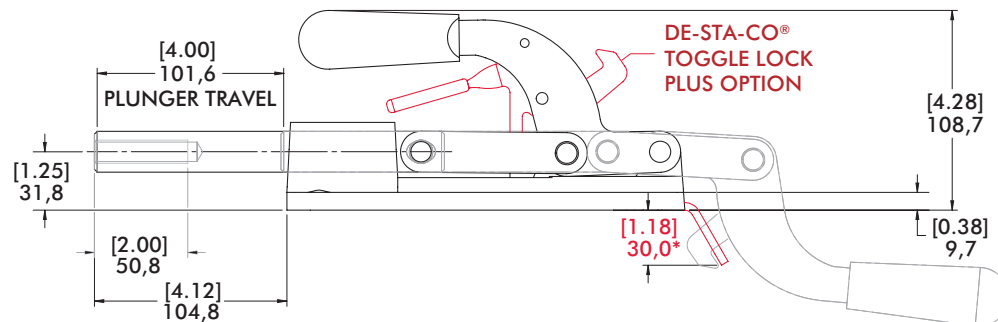
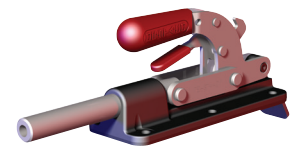


Model	Max. Holding Capacity	Weight	EF:AF (pushing)	Plunger Travel	(M) Plunger Thread	Recommended Spindle (Not Supplied)
640					1/2-13	220203
640-M	[7,500 lbf] 33400 N	[6.78lb] 3,08kg	35:1	[4.00] 101,6	M12	220203-M
640-R					1/2-13	220203
640-MR					M12	220203-M

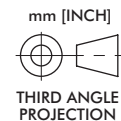
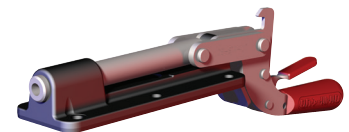
HC = Holding Capacity, EF = Exerting Force, AF = Applied Force



Extended (640-R shown)



Retracted (640-R shown)



(* Dimensions above in RED applies to the 640-R/640-MR only

650 SERIES

Straightline Action Clamps | Product Overview

Features:

- For heavy duty push/pull clamping
- Largest of our Straight Line Action Clamps
- Forged steel base and handle
- Allow handle to rotate and fall below mounting plane to lock in retracted position

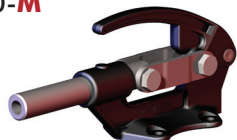
Applications:

- Assembly
- Welding
- Staking, light presswork
- Tensioning devices

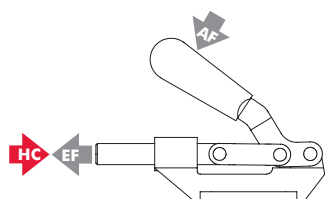
Also Available:

See page MC-ACC-1 for accessories

650
650-M

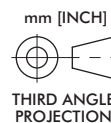
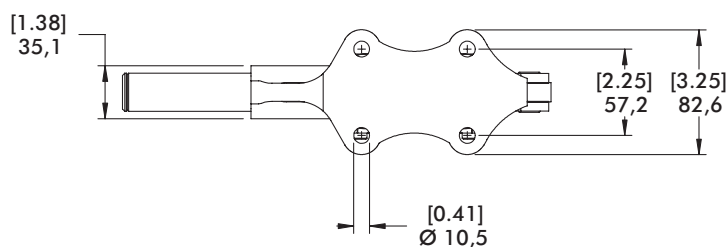
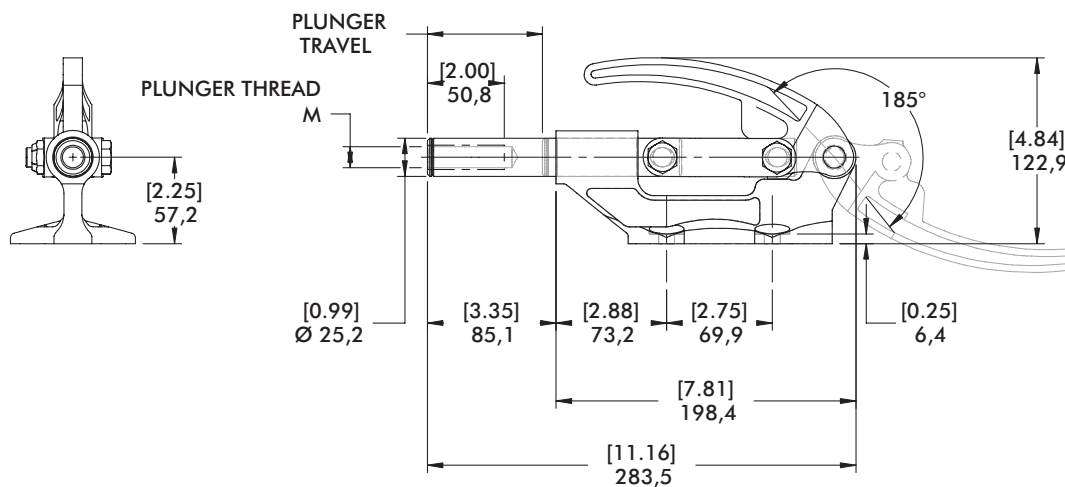


Technical Information, Holding Capacities, Standard Clamp Dimensions



Model	Max. Holding Capacity	Weight	EF:AF (pushing)	Plunger Travel	(M) Plunger Thread	Recommended Spindle (Not Supplied)
650	[16,000 lbf] 71200 N	[5.69lb] 2,58kg	25:1	[3.00] 76,6	5/8-11	250203
650-M					M16	250203-M

HC = Holding Capacity, EF = Exerting Force, AF = Applied Force



95030, 95040, 95050, 95060 SERIES

Straightline Action Clamps | Product Overview

Features:

- Low profile with high holding capacities
- Cast steel base and handle
- Allow handle to rotate and fall below mounting plane to lock in retracted position

Applications:

- Assembly
- Testing
- Tensioning devices

Also Available:

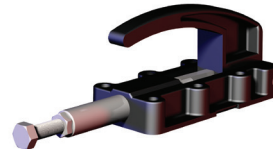
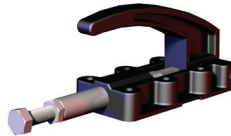
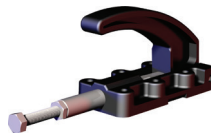
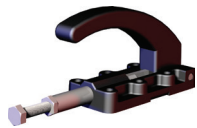
See page MC-ACC-1 for accessories

95030

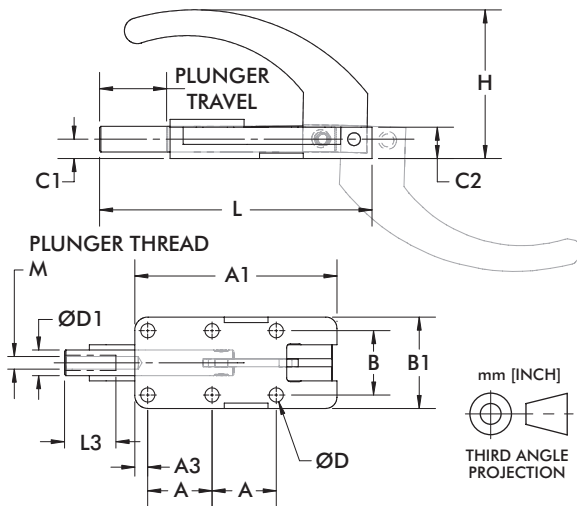
95040

95050 ⓘ

95060 ⓘ



Technical Information, Holding Capacities



Model	Max. Holding Capacity	Weight	Plunger Travel	(M) Plunger Thread	Recommended Spindle (Not Supplied)
95030	[550 lbf] 2450 N	[0.80lb] 2,58kg	[0.98] 24,9	M6	205203-M
95040	[1100 lbf] 4900 N	[1.60lb] 0,73kg	[1.50] 38,1	M8	207203-M
95050 ⓘ	[1650 lbf] 7340 N	[2.10lb] 0,95kg	[1.97] 50	M12X	220203-M
95060 ⓘ	[3960 lbf] 17600 N	[6.4lb] 2,9kg	[2.36] 60		

ⓘ This item is available upon request
HC = Holding Capacity, **EF** = Exerting Force, **AF** = Applied Force

Part No.	A	A1	A3	B	B1	C1	C2	ØD	ØD1	H	L	L3
95030	[0.98] 25	[3.09] 78,6	[0.20] 5	[0.98] 25	[1.40] 35,5	[0.30] 7,5	[0.48] 12,2	[0.22] 5,5	[0.39] 10	[2.28] 57,8	[4.17] 106	[0.79] 20
95040	[1.38] 35	[4.35] 110,6	[0.34] 8,6	[1.38] 35	[2.00] 50,7	[0.39] 10	[0.72] 18,3	[0.26] 6,5	[0.55] 14	[2.82] 71,7	[5.86] 148,9	[0.98] 25
95050 ⓘ	[1.77] 45	[5.54] 170,6	[0.40] 10,1	[1.77] 45	[2.60] 66	[0.55] 14	[0.94] 23,8	[0.33] 8,4	[0.75] 19	[3.21] 81,5	[7.48] 189,9	[1.57] 40
95060 ⓘ	[2.17] 55	[6.73] 170,9	[0.40] 10,1	[2.17] 55	[2.99] 76	[0.63] 16	[1.08] 27,4	[0.41] 10,5	[0.87] 22	[3.55] 90,2	[9.17] 233	[1.57] 40

ⓘ This item is available upon request Dimensions shown mm [inch]

5130, 5133, 5130 SERIES

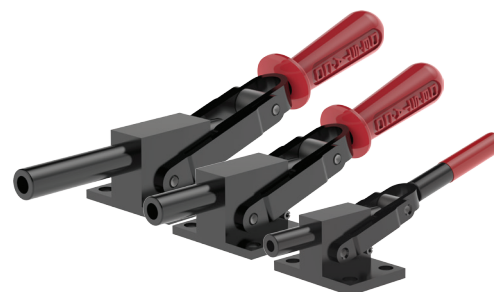
Heavy-Duty Straightline Action Clamps | Product Overview

Features:

- Reverse action allows the handle to stay out of the work zone
- Hardened steel pivot pins and bushings provide long life
- Black oxide finish with hardened plungers

Applications:

- Welding fixtures
- Assembly fixtures
- Light machining



5131/-M
Flanged Base

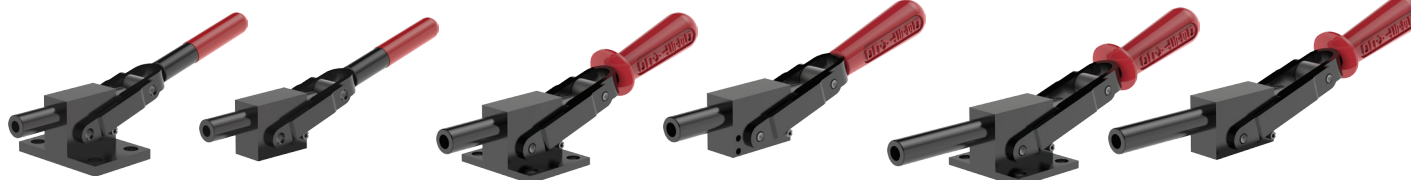
5131-B/-MB
Solid Base

5130/-M
Flanged Base

5130-B/-MB
Solid Base

5133/-M
Flanged Base

5133-B/-MB
Solid Base

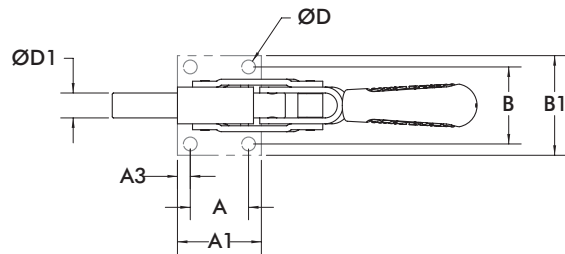
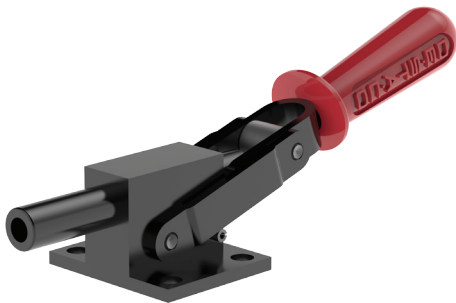
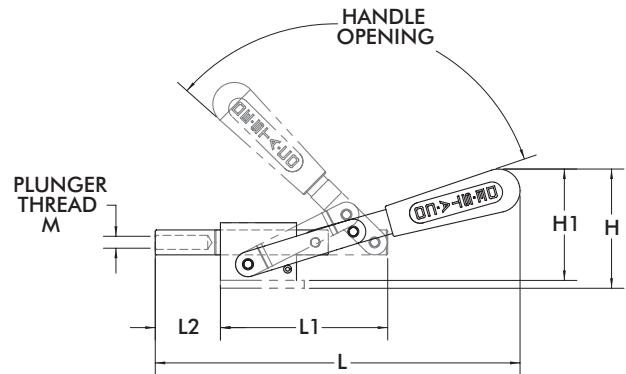
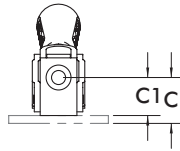


Model	Max. Holding Capacity	Weight	Plunger Travel mm[in.]	Handle Opening	Plunger Thread (M)	Recommended Spindle (not supplied)
5131	[2500lbf.] 11120N	[1.12lbs] 0,51kg	[1.10] 28	113°	5/16-18	461203
5131-M					M8	461203-M
5131-B		[0.85lbs] 0,39kg			5/16-18	461203
5131-MB					M8	461203-M
5130	[5800lbf.] 25800N	[2.87lbs] 1,30kg	[1.90] 48.4	125°	1/2-13	z325203
5130-M					M12	220203-M
5130-B		[2.40lbs] 1,09kg			1/2-13	325203
5130-MB					M12	220203-M
5133	[4600lbf.] 20460N	[3.12lbs] 1,41kg	[3.18] 81	139°	1/2-13	325203
5133-M					M12	220203-M
5133-B		[2.65lbs] 1,20kg			1/2-13	325203
5133-MB					M12	220203-M

5130, 5133, 5130 SERIES

Heavy-Duty Straightline Action Clamps | Dimensions

mm [INCH]
THIRD ANGLE PROJECTION



Model	A	A1	A3	B	B1	B3	C	D	D1	H	L	L1	L2
5131	[1.13]	[1.73]	[0.30]	[1.87]	[2.52]	[1.14]	[1.10]	[0.34]	[0.51]	[3.15]	[7.37]	[3.22]	[1.15]
5131-M	28,7	44	7,7	47,6	64,0	29,0	28,0	8,6	13,0	80,0	187,2	81,7	29,3
5130										[3.63]	[11.11]	[5.20]	[1.96]
5130-M	[1.75]	[2.52]	[0.38]	[2.99]	[2.99]	[1.57]	[1.38]	[0.41]	[0.75]	92,3	282,4	132,0	49,7
5133	44,5	64,0	9,8	76	75,9	40	35,1	10,5	19,1	[4.22]	[12.89]	[6.58]	[3.23]
5133-M										107,2	327,3	167,0	82,2

Model	B3	C1	D1	H1
5131-B	[1.14]	[0.87]	[0.51]	[2.91]
5131-MB	29,0	22,1	13,0	74,0
5130-B				[3.40]
5130-MB	[1.57]	[1.14]	[0.75]	86,3
5133-B	39,9	29,0	19,1	[3.98]
5133-MB				101,2

ⓘ This item is available upon request

5150 SERIES

Straightline Action Clamps | Product Overview

Features:

- Square plunger provides positive radial location
- Reverse action allows the handle to stay out of the work zone
- Hardened steel pivot pins and bushings provide long life
- Black oxide finish with hardened plungers

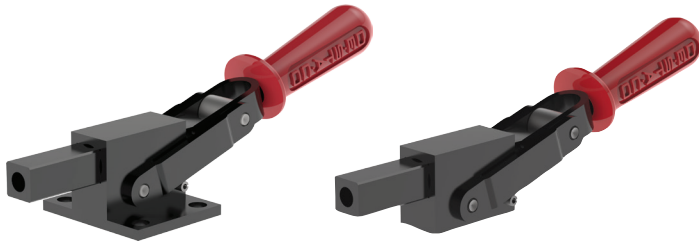
Applications:

- Welding fixtures
- Assembly fixtures
- Light machining



5150/5150-M
Flanged Base

5150-B/5150-M
Solid Base



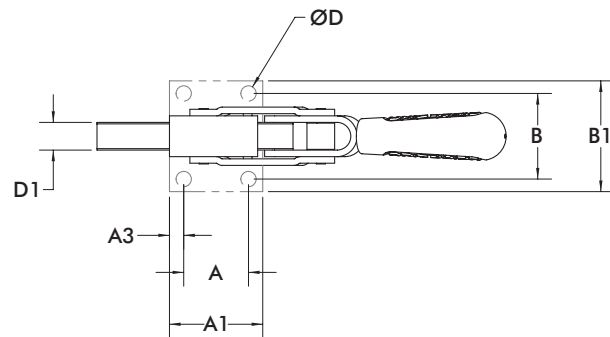
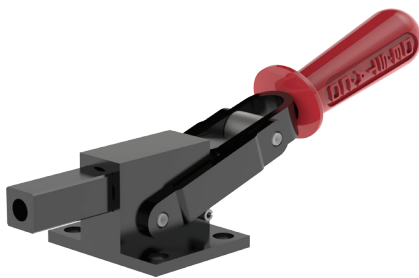
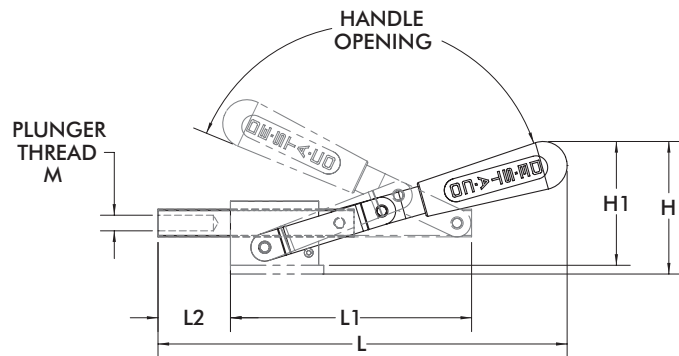
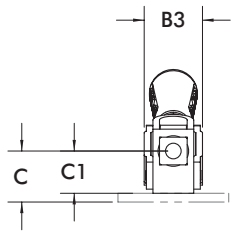
Technical Information

Model	Max. Holding Capacity	Weight	Plunger Travel mm[in.]	Handle Opening	Plunger Thread (M)	Recommended Spindle (not supplied)
5150	[5800lb.] 25800N	[1.12lbs] 0,51kg	[1.91] 48.4	125°	1/2-13	461203
5150-M					M12	461203-M
5150-B		[0.85lbs] 0,39kg	1/2-13		461203	
5150-MB			M12		461203-M	

5150 SERIES

Straightline Action Clamps | Dimensions

mm [INCH]
THIRD ANGLE PROJECTION



Model	A	A1	A3	B	B1	B3	C	C1	D	D1
5150	[1.75]	[2.52]	[0.38]	[2.31]	[2.99]		[1.38]	--	[0.41]	
5150-M	44,5	64,0	9,8	58,7	76	[1.57]	35	--	10,5	[0.75]
5150-B	--	--	--	--	--	40	--	[1.14]	--	19,1
5150-MB	--	--	--	--	--		--	29	--	

Model	H	H1	L	L1	L2	M
5150	[3.63]	--				1/2-13
5150-M	92,3	--	[11.25]	[5.24]	[1.96]	M12
5150-B	--	[3.40]	286	133,1	49,7	1/2-13
5150-MB	--	86,3				M12

602, 604, 624 SERIES

Straightline Action Clamps | Product Overview

Features:

- Versatile and compact straight line action clamps
- Threaded body for through hole mounting
- **-SS** models are stainless steel

Applications:

- Assembly
- Checking fixtures
- Welding fixtures
- Tensioning devices

Also Available:

See page MC-ACC-1 for accessories

602
602-**SS**
602-**MM**
602-**MMSS**



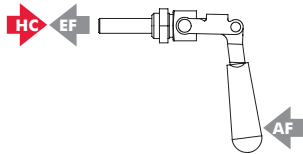
604
604-**SS**
604-**MM**
604-**MMSS** ⓘ



624
624-**SS**
624-**MM**



Technical Information, Holding Capacities, Standard Clamp Dimensions



Model	Max. Holding Capacity	Weight	EF:AF (pushing/pulling)	Plunger Travel	(M) Plunger Thread	Spindle (Recommended)	Mounting Nut (Supplied)
602					1/4-20	205203	602105
602-SS	[200 lbf] 900 N	[0.12lb] 0,05kg	31:1/28:1	[0.75] 19	M6	202943	602905
602-MM						205203-M	602105-M
602-MMSS						202943-M	602905-M
604	[300 lbf] 1330 N				5/16-18	207203	606104
604-SS	[400 lbf] 1780 N	[0.44lb] 0,20kg	45:1/26:1	[1.50] 38	M8	--	606904
604-MM	[300 lbf] 1330 N					207943	606104-M
604-MMSS ⓘ	[400 lbf] 1780 N					207943-M (included)	606904-M
624					3/8-16	210203	624105
624-SS	[700 lbf] 3110 N	[1.63lb] 0,74kg	49:1/21:1	[2.63] 66	M10	237943 (included)	624905
624-MM						210203-M	624105-M

ⓘ This item is available upon request **HC** = Holding Capacity, **EF** = Exerting Force, **AF** = Applied Force

602, 604, 624 SERIES

Straightline Action Clamps | Dimensions | 602/604/624/-SS/-MM/-MMSS

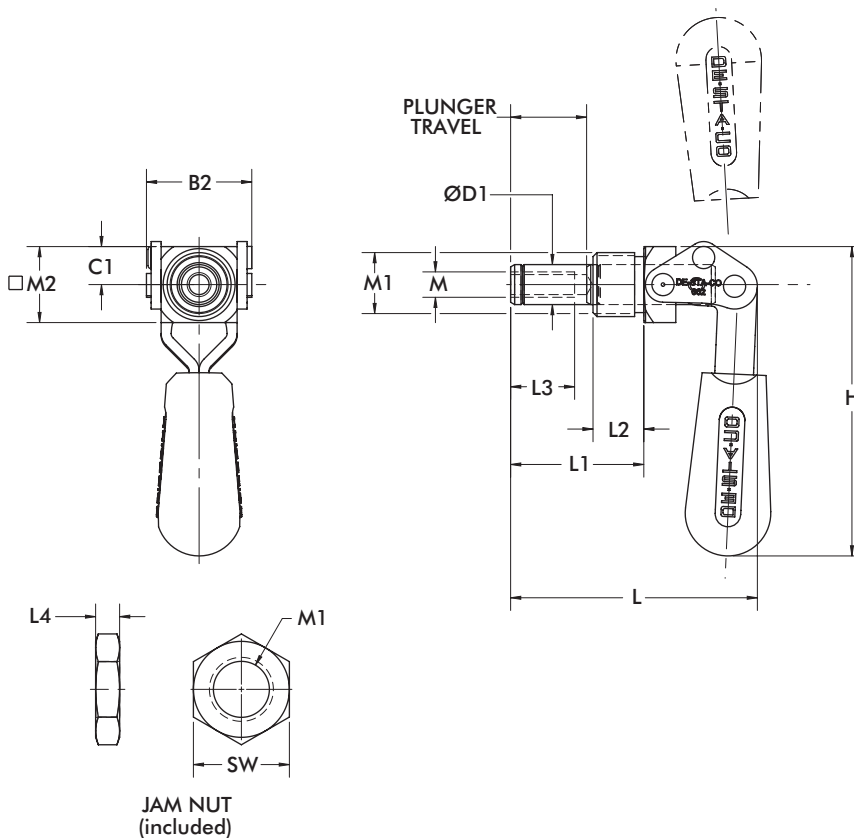
602
602-SS
602-MM
602-MMSS



604
604-SS
604-MM
604-MMSS ⓘ



624
624-SS
624-MM



Model no.	B2	C1	ØD1	H	L	L1	L2	L3	L4	M1	M2	SW
602			[0.39] 10									[0.88] 22,2
602-SS	[1.04] 26,3	[0.37] 9,5	[0.37] 9,5	[3.13] 80	[2.43] 61,7	[1.31] 33,3	[0.50] 12,7	[0.63] 16	[0.25] 6,4	5/8-18	[0.75] 19	[0.87] 22
602-MM			[0.39] 10							M16x1.5		[0.87] 22
602-MMSS												
604												
604-SS	[1.30] 33	[0.44] 11	[0.44] 11	[4.16] 106	[4.27] 108,5	[2.18] 55	[0.63] 16	[1.00] 25		3/4-16	[0.88] 22	[1.00] 25,4
604-MM										M20x1.5		[1.18] 30
604-MMSS									[0.25] 6			
624												
624-SS	[1.81] 46	[0.75] 19	[0.62] 16	[5.60] 142	[6.68] 170	[3.62] 92	[3.24] 82	[1.25] 32		1-14	[1.25] 32	[1.50] 38,1
624-MM										M27x2		[1.61] 41

Dimensions shown mm [inch]

Dimensions and technical information are subject to change without notice

MC-SLA-26



6004 SERIES

Straightline Action Clamps | Product Overview

Features:

- Similar in size to Model 604, with a solid body
- 50% more holding capacity than 604
- May be mounted through a hole or in a tapped hole.
- Locks over center in the extended and retracted position

Applications:

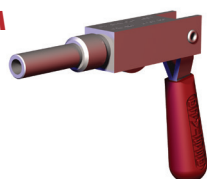
- Assembly
- Checking fixtures
- Welding fixtures
- Tensioning devices

Also Available:

See page MC-ACC-1 for accessories

Covered under one or more U.S./International Patents

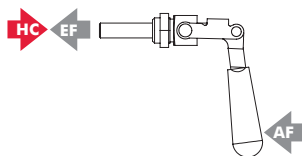
6004
6004-MM



6004-R
6004-MMR
with
DE-STA-CO®
Toggle Lock
Plus

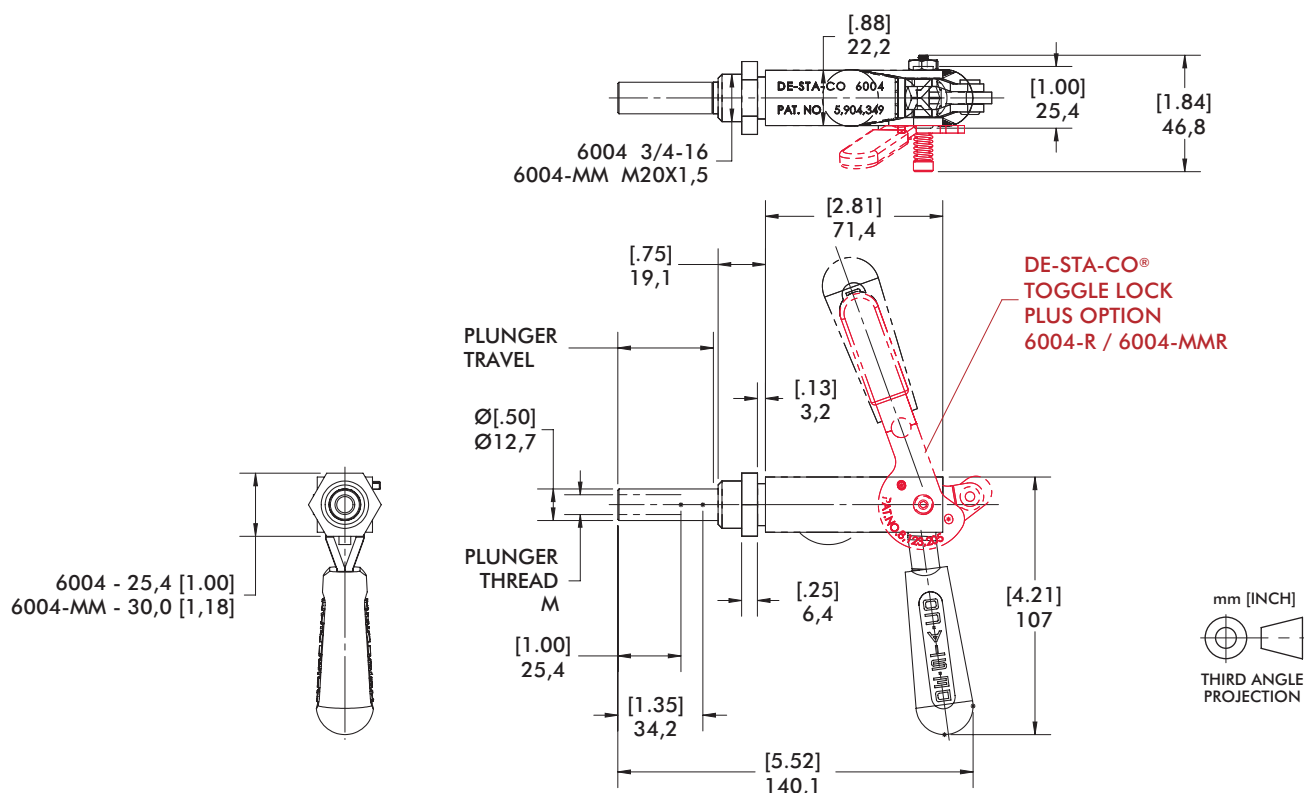


Technical Information, Holding Capacities, Standard Clamp Dimensions



Model	Max. Holding Capacity	Weight	EF:AF (pushing)	Plunger Travel	(M) Plunger Thread	Spindle (Recommended)	Mounting Nut (Supplied)
6004	[450 lbf] 2000 N	[0.81lb] 0,37kg	14.4:1	38 [1.50]	5/16-18	207203	606104
6004-MM		[0.89lb] 0,40kg			M8	207203-M	606104-M
6004-R					5/16-18	207203	606104
6004-MMR					M8	207203-M	606104-M

HC = Holding Capacity, EF = Exerting Force, AF = Applied Force



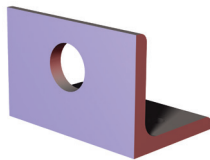
602, 604, 624, 6004 SERIES

Straightline Action Clamps | Mounting Plates

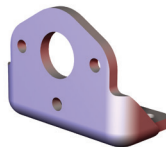
Features:

- Mounting accessories for Threaded Body Straight Line Action Clamps

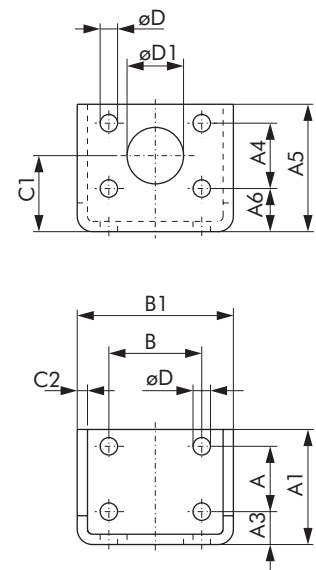
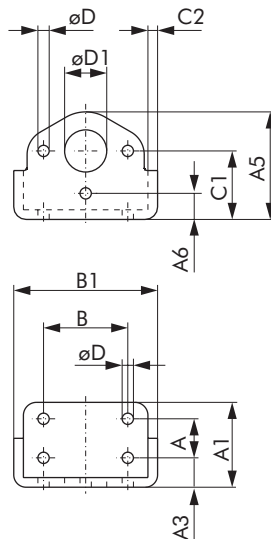
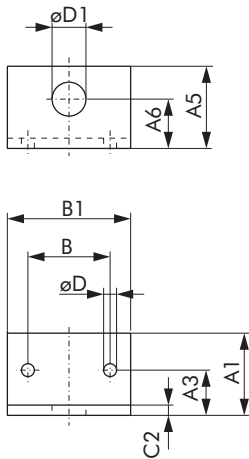
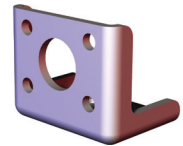
602106-M



604106,
604106-M



624106-M



Item Number	For Use With	A	A1	A3	A4	A5	A6	B	B1	C1	C2	D	D1
602106-M	602 602-MM	--	[1.57] 40	[0.87] 22	--	[1.57] 40	[0.94] 24	[1.57] 40	[2.36] 60	--	[0.20] 5	[0.25] 6,3	[0.65] 16,5
604106	604 6004	[0.75] 19,1	[1.60] 40,6	[0.55] 14	--	[2.05] 52,1	[0.50] 12,7	[1.62] 41,1	[2.80] 71,1	[1.30] 33	[0.19] 4,7	[0.22] 5,6	[0.75] 19,1
604106-M	604-MM 6004-MM												[0.81] 20,5
624106-M	624 624-MM	[1.25] 31,8	[2.20] 56	[0.63] 16	[1.25] 31,8	[2.44] 62	[0.83] 21	[1.78] 45,2	[2.99] 76	[1.46] 37	[0.20] 5	[0.33] 8,5	[1.08] 27,5

Dimensions shown mm [inch]

614 SERIES

Straightline Action Clamps | Product Overview

Features:

- Single hole threaded mount or side mount
- Precision hardened and ground plunger is designed for anti-rotation under torsional loads
- Locks in the extended or retracted position, internal locking in the push direction

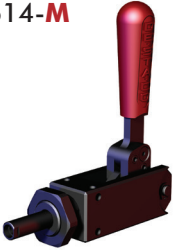
Applications:

- Assembly
- Checking fixtures
- Locaters and positioners

Also Available:

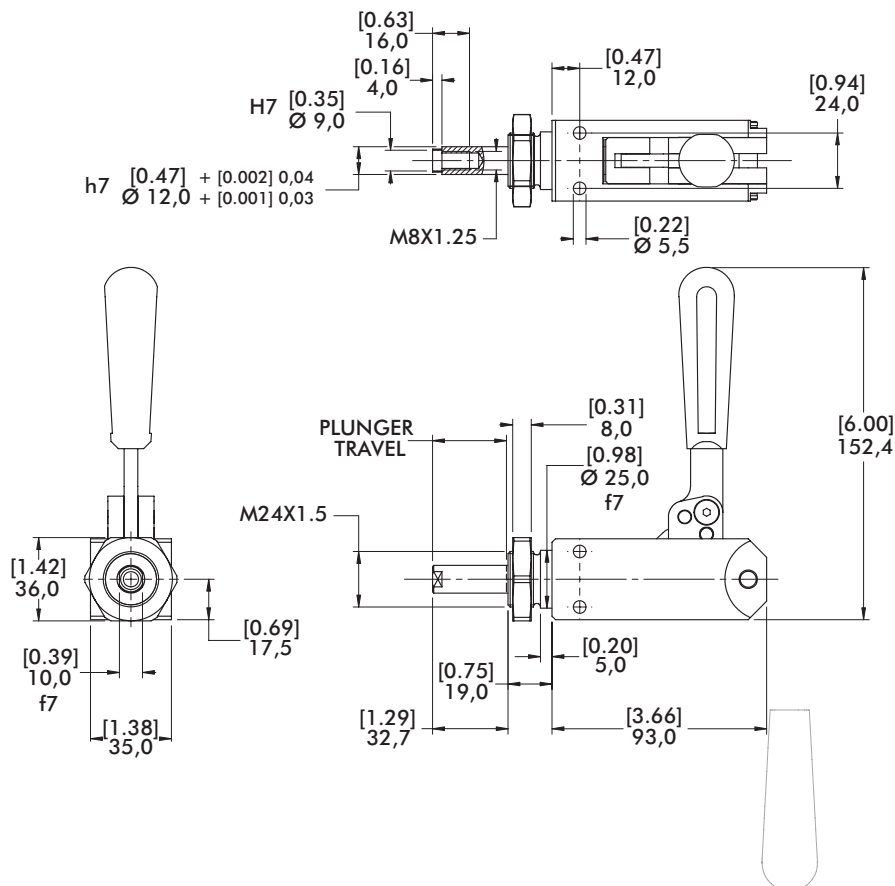
See page MC-ACC-1 for accessories

614-M



Technical Information, Holding Capacities, Standard Clamp Dimensions

Model	Max. Holding Capacity	Weight	Plunger Travel	Plunger Thread	Mounting Nut (Supplied)
614-M	[1125 lbf] 5000 N	[1.81lb] 0,82kg	[1.26] 32	M8	614-1-10



670, 675, 690, 695 SERIES

Straightline Action Clamps | Product Overview

Features:

- Precision clamping for high production
- Adjustable collet-type bushing minimizes radial plunger movement
- Plunger has a flat surface for anti rotation
- Pre-load nut and hold open device included

Applications:

- Assembly
- Welding

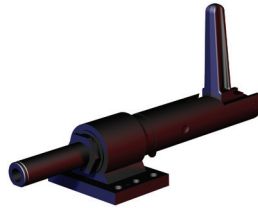
670-1MBPLS



675-1MBPLS



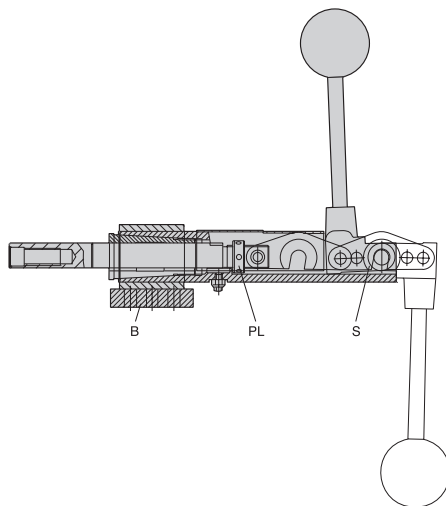
690-1MBPLS



695-1MBPLS ⓘ



Series 670, 675, 690, 695 Technical Information, Holding Capacities



Model	Max. Holding Capacity	Weight	Plunger Travel	Plunger Thread
670-1MBPLS	[2400 lbf] 10680 N	[4.2lb] 1,91kg	[2.25] 57,2	M12
675-1MBPLS		[4.0lb] 1,81kg	[1.10] 28	
690-1MBPLS	[5000 lbf] 22240 N	[8.2lb] 3,72kg	[3.00] 76,2	M16
695-1MBPLS ⓘ		[7.2lb] 3,27kg	[1.50] 38,1	

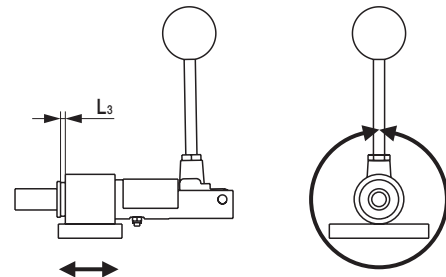
ⓘ This item is available upon request

The unique feature of these clamps is the collet-type bushing that can be adjusted to eliminate plunger end movement after long repeated use. The plunger also has a flat which prevents lateral movement and allows offset piloting and holding. The plunger is drilled and tapped for threaded spindles or custom fixturing.

The adjustable pre-load nut (PL) can be used to lock the clamp against itself when not under pressure and therefore prevent opening when mounted vertically. The spring hold-open device (S) prevents the clamp from accidentally closing.

The mounting base (B) is supplied disassembled with the four models, to enable welding the base and the main assembly in any handle position.

Series 675 and 695 (shorter stroke) reach the over-center position only when clamping. Series 670 and 690 (longer stroke) lock in both the extended and retracted position.

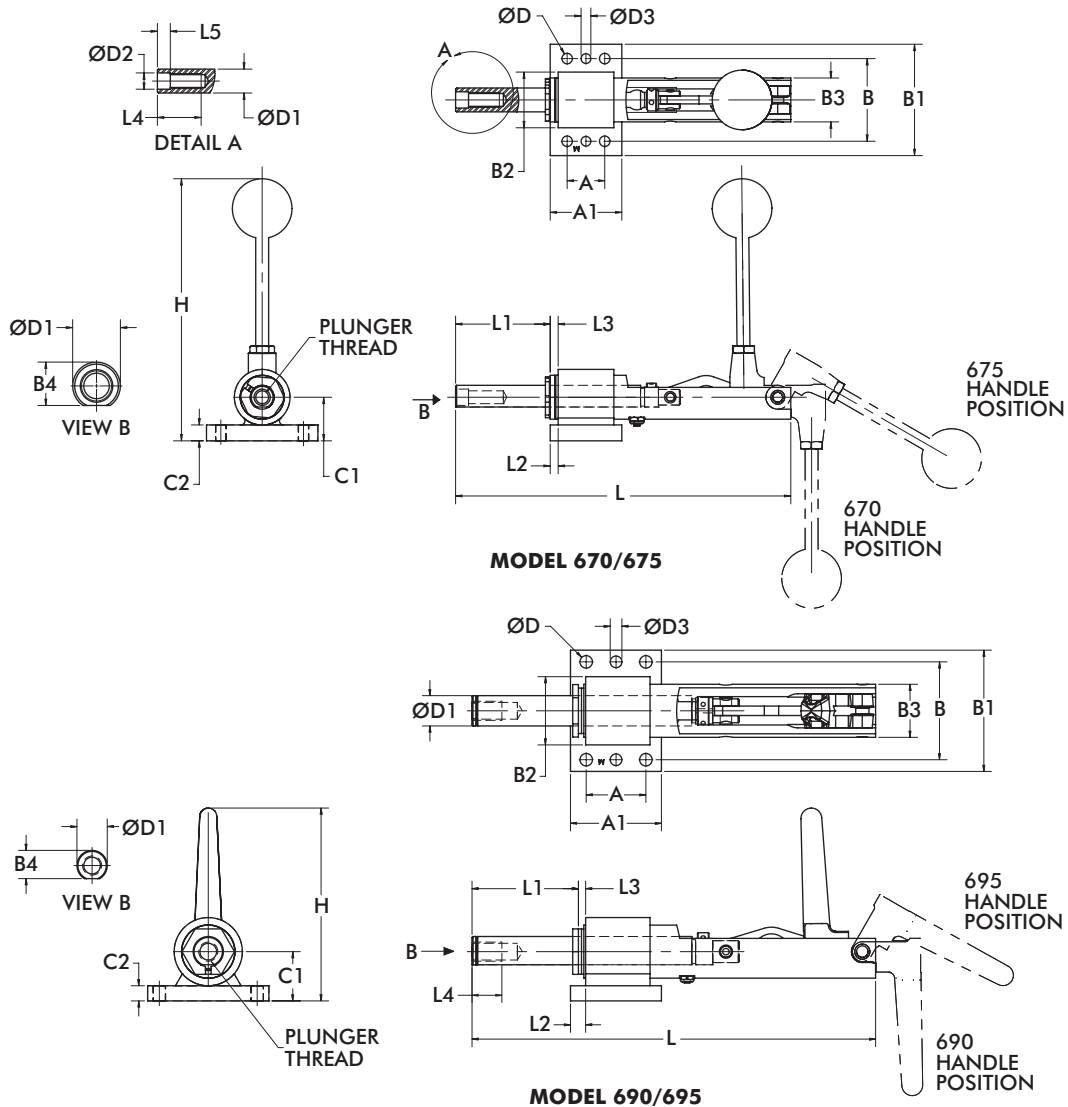


Welding range L_3 axial
0-8mm [0-0.31in.]

Welding range radial 360°

670, 675, 690, 695 SERIES

Straightline Action Clamps | Dimensions



Model	A	A1	B	B1	B2	B3	B4	C1	C2	D	D1	D2H7	D3
670-1MBPLS	[1.18]	[2.24]	[2.60]	[3.50]	[1.75]	[1.38]	[0.68]	[1.37]	[0.50]	[0.33]	[0.75]	[0.51]	[0.31]
675-1MBPLS	30	57	66	89	44,5	35	17,3	34,8	12,7	8,4	19	13	7,8
690-1MBPLS	[1.97]	[3.00]	[3.23]	[4.00]	[2.25]	[1.75]	[0.93]	[1.63]	[0.50]	[0.41]	[1.00]	--	[0.39]
695-1MBPLS	50	76,2	82	101,6	57,2	44,4	23,7	41,3	12,7	10,5	25,4	--	9,8

Model	H	L	L1	L2	L3	L4	L5
670-1MBPLS	[8.11]	[10.55]	[2.97]	[0.25]	[0-0.31]	[1.38]	[0.41]
675-1MBPLS	206	[7.68]	[1.74]	6,4	0-8	35	10,3
690-1MBPLS	[6.37]	[13.31]	[3.69]	[0.50]	[0-0.31]	[0.98]	--
695-1MBPLS	162	[9.45]	[2.25]	12,7	0-8	25	--