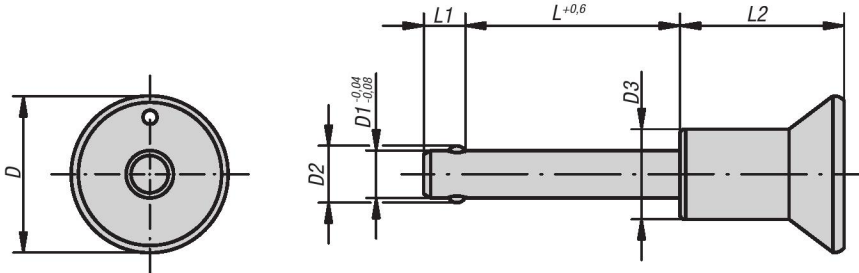




Ball Lock Pins

Button Head Style self-locking, stainless steel



Material:

Steel parts stainless steel.

Type:

Natural finish.

Part Number Example:

K0364.3110030
(include length L e.g. 030 for L = 30 mm.)

Note:

Ball Lock Pins allow instant bolting of two workpieces. Two spring pressure balls automatically lock the pin in place. Pressing the push button will release the ball and efficiently unlock the pin. Corrosion resistant.

Heat resistance up to: +250 °C/+483 °F.

Shearing force double shear (F) = S · τ aB max.

Accessories:

Safety Helix Cable: K0367.10200

Pin Retaining Ring: K0367.15/19/23

Pin Retaining Cable with eye: K0367....

KIPP Ball Lock Pins, button head style, self-locking, stainless steel, inch

Item No.	D	D1	D2	D3	L	L1	L2	Receiving hole H11	Shearing force double shear max. kN
K0364.23CL***	25	3/16	5.25	14	.5/.75/1/1.25	6	26.5	3/16	13
K0364.23CM***	25	1/4	7.2	14	.5/.75/1/1.25/1.5/1.75/2	6.9	26.5	1/4	24
K0364.23CN***	25	5/16	9.5	14	1/1.25/1.5/1.75/2	7.9	26.5	5/16	38
K0364.31C0***	33	3/8	11.5	19	1/1.25/1.5/1.75/2	8.8	34.6	3/8	54
K0364.31CU***	33	7/16	13	19	1/1.25/1.5/1.75/2/2.5/3	9.7	34.6	7/16	74
K0364.31CP***	33	1/2	15	19	1/1.25/1.5/1.75/2/2.5/3	10	34.6	1/2	96
K0364.31CQ***	33	5/8	19	20	1/1.25/1.5/1.75/2/2.5/3	13.3	34.6	5/8	150

KIPP Ball Lock Pins, button head style, self-locking, stainless steel, metric

Item No.	D	D1	D2	D3	L	L1	L2	Receiving hole H11	Shearing force double shear max. kN
K0364.2305***	25	5	5,5	14	10/15/20/25/30	6	26,5	5	15
K0364.2306***	25	6	6,85	14	10/15/20/25/30/35/40/45/50	7	26,5	6	22
K0364.2308***	25	8	9,5	14	20/25/30/35/40/45/50	8	26,5	8	38
K0364.3110***	33	10	12	19	20/25/30/35/40/45/50/60	9	34,6	10	60
K0364.3112***	33	12	14,5	19	25/30/35/40/45/50/60/70/80	10	34,6	12	86
K0364.3116***	33	16	19	20	30/35/40/45/50/60/70/80	13,3	34,6	16	153