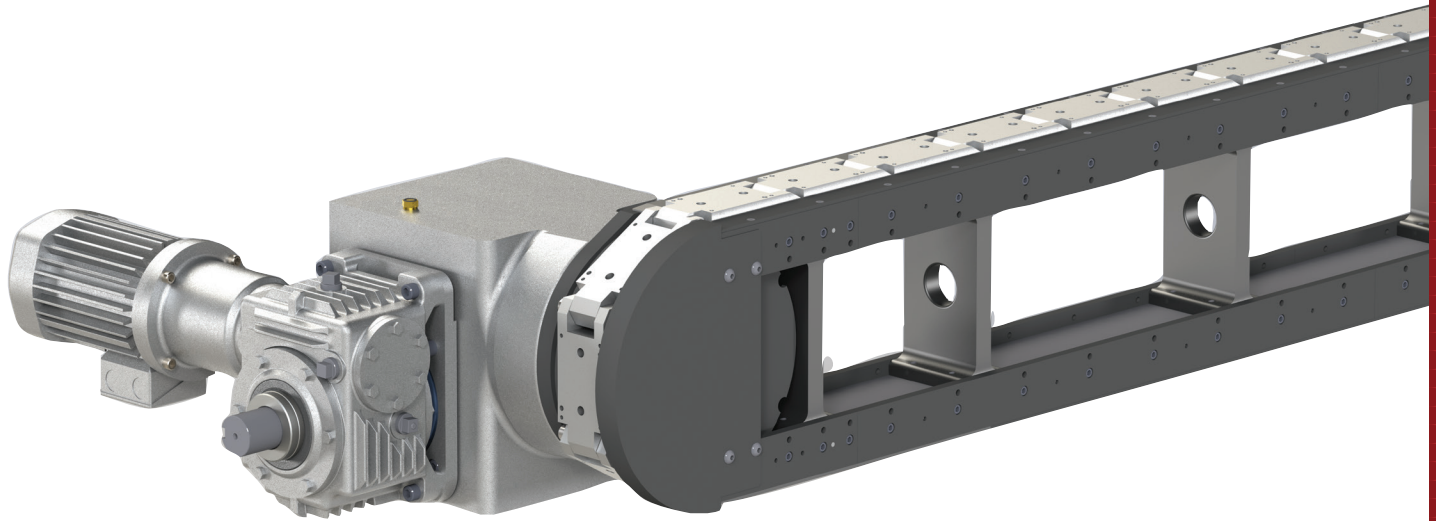


# TABLE-TOP MODULAR CONVEYORS

Features, How To Order



## Features:

**CAMCO Modular Table Top Precision Link Conveyors** are ideal for linear transfer applications with features including:

Modular frame design in fixed increment lengths facilitates quick assembly and delivery.

Table-Top or Base mounted

Available in carousel or over-under style

Precision positioning of parts for assembly or manufacturing processes

High-speed station-to-station parts transfer

Precision links with roller bearing cam followers for smooth transfer and long life.

Link sizes (3-inch, 4.5-inch, 6-inch) to meet most application requirements

Open frame design for pass-through of belting, linkages, electric and air supply components.

Optional bases, line shafts & tooling plates

Complete with motorized index drive system including overload protection.

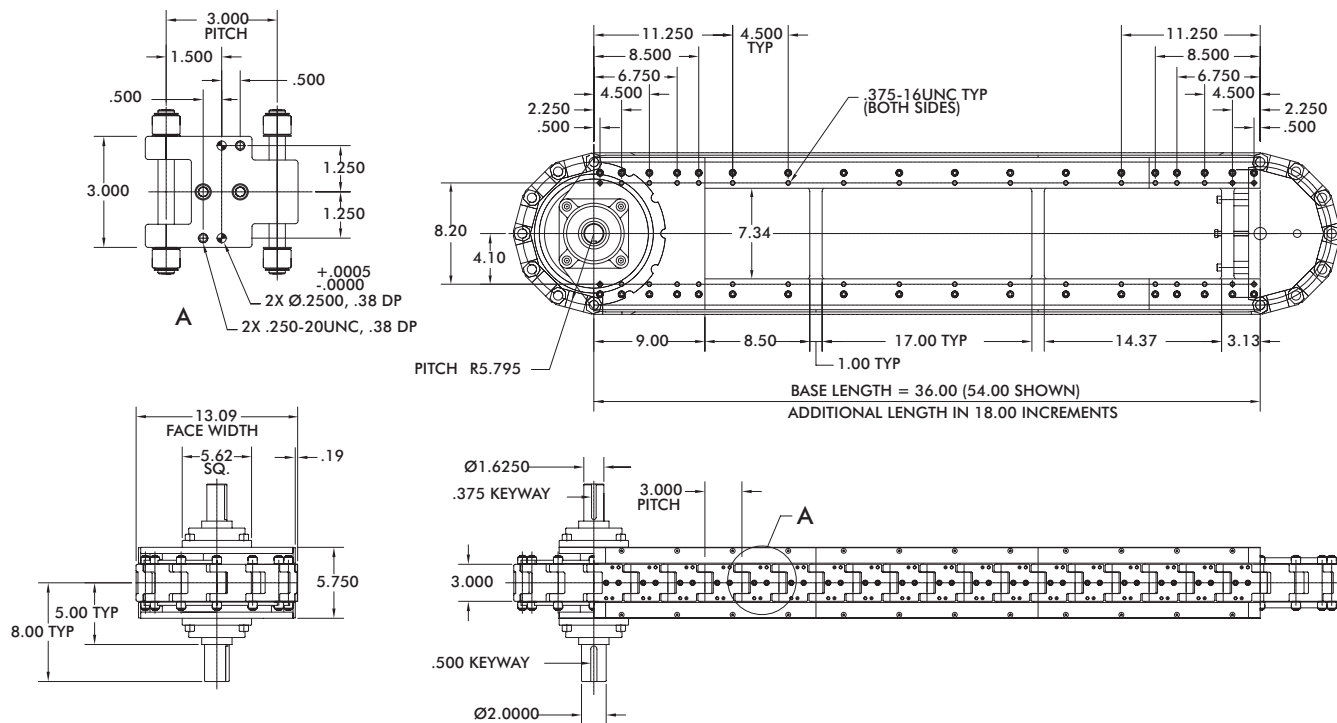
## Table of Contents

3.0 Inch .....	IN-TTC-3
4.5 Inch .....	IN-TTC-5
6.0 Inch .....	IN-TTC-7
Conveyor Options .....	IN-TTC-9

# 3.0 INCH SERIES

## Table-Top Modular Conveyors | Configurations

### Modular Conveyor (module only)



### Modular Conveyor (drive package)

#### Standard Drive Package

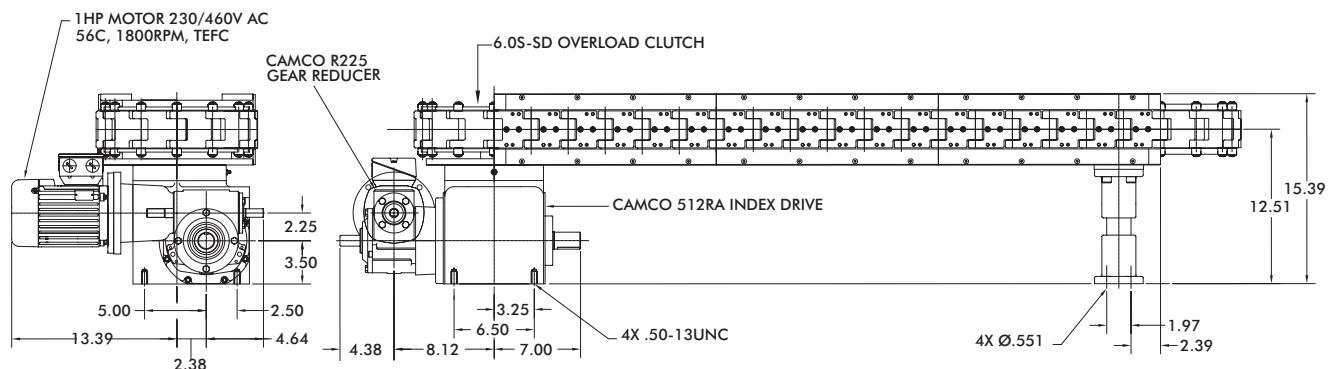
- 512RA Index Drive
- R225 Gear Reducer
- 6.0FC-SD Overload Clutch (Shaft Drive)
- 6.0S-SD Overload Clutch (Direct Drive)
- 1 hp high-cycling, performance AC Motor
- IM-pAC Motor Control

#### Heavy-Duty Drive Package

- 662RA Index Drive
- 7300C Gear Reducer
- 11FC-SD Overload Clutch (Shaft Drive)
- 6.0-SD Overload Clutch (Direct Drive)
- 1 hp high-cycling, performance AC Motor
- IM-pAC Motor Control

Index Distance [in.]	Indexer Stops
3.00	12
6.00	6
9.00	4
12.00	3

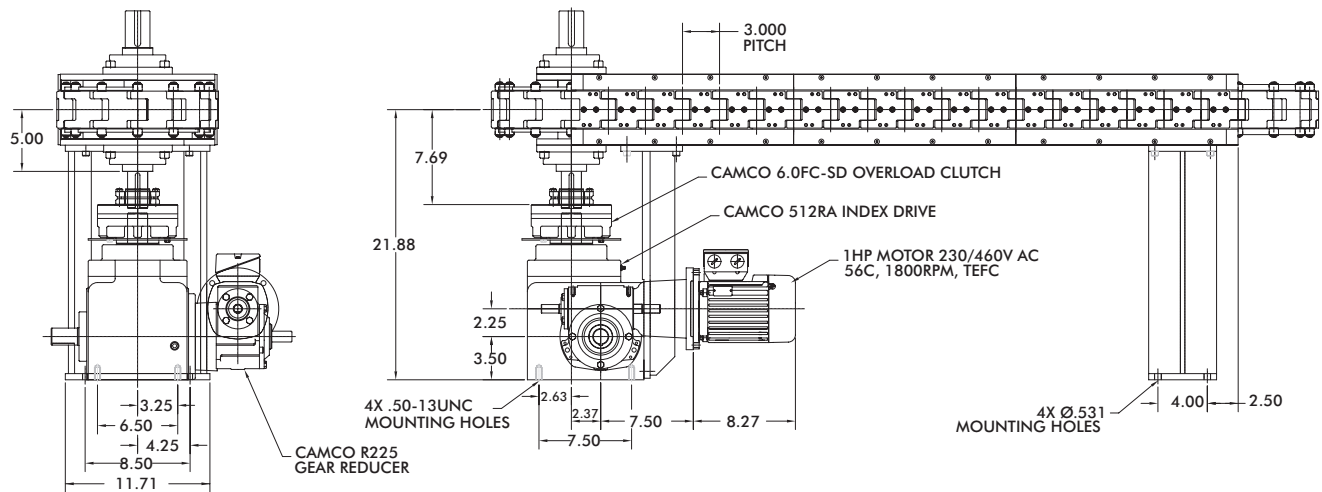
### Direct Drive Carousel



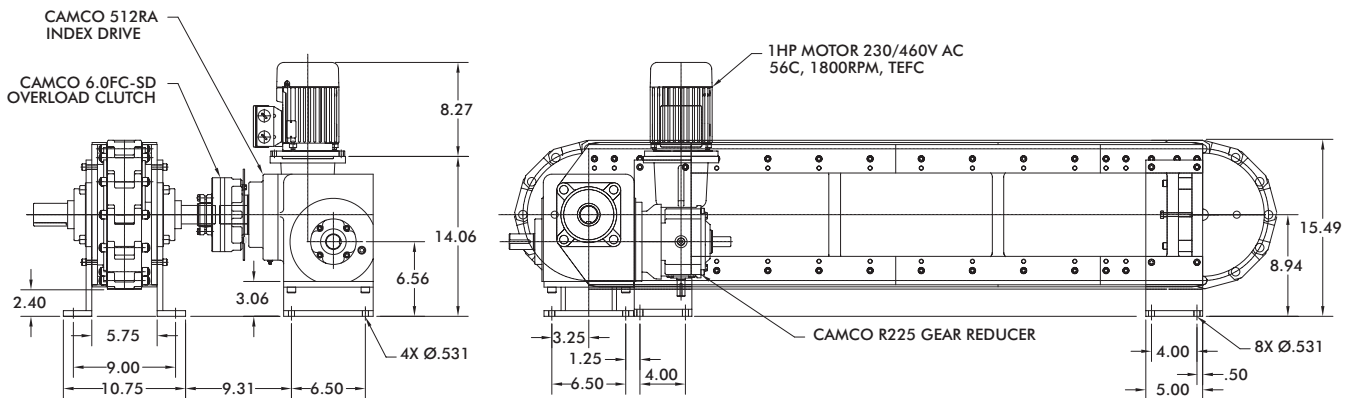
# 3.0 INCH SERIES

## Table-Top Modular Conveyors | Configurations

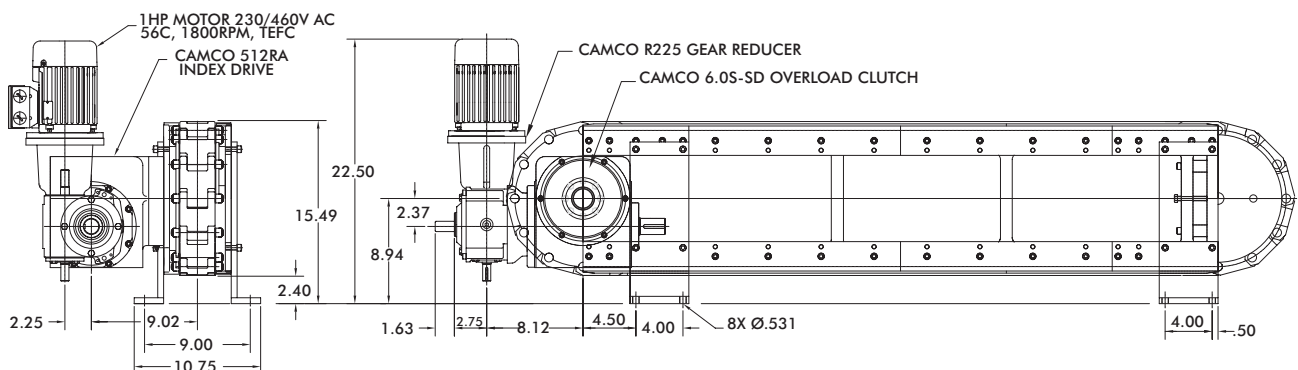
### Shaft Drive Carousel



### Shaft Drive Over/Under



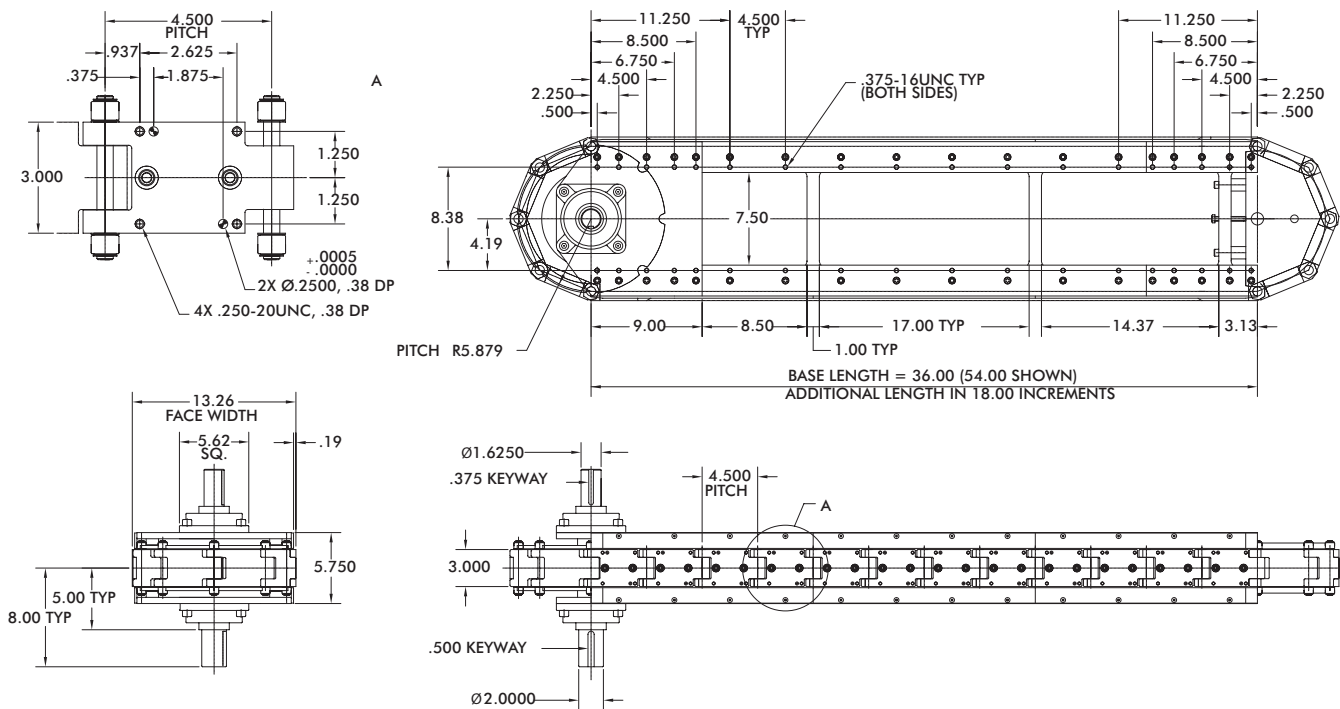
### Direct Drive Over/Under



# 4.5 INCH SERIES

## Table-Top Modular Conveyors | Configurations

### Modular Conveyor (module only)



### Modular Conveyor (drive package)

#### Standard Drive Package

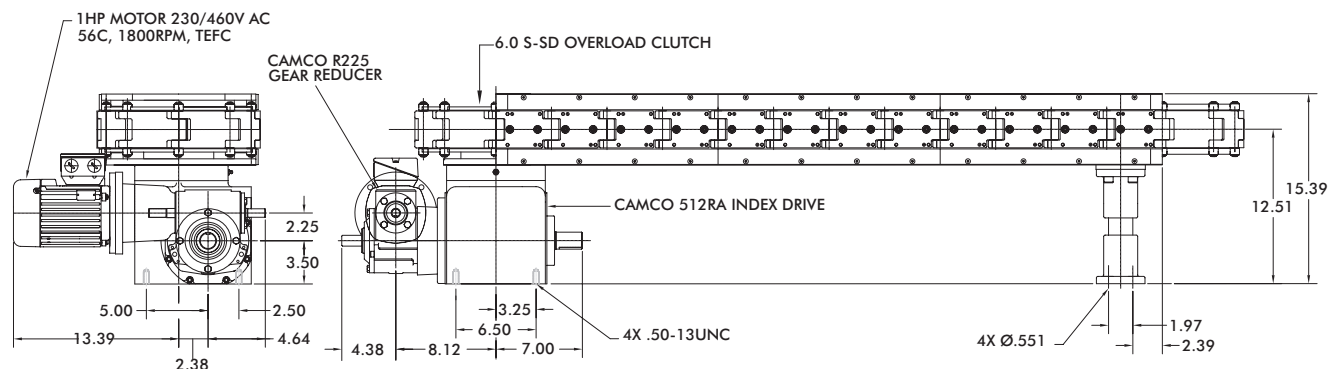
- 512RA Index Drive
- R225 Gear Reducer
- 6.0FC-SD Overload Clutch (Shaft Drive)
- 6.0S-SD Overload Clutch (Direct Drive)
- 1 hp high-cycling, performance AC Motor
- IM-pAC Motor Control

#### Heavy-Duty Drive Package

- 662RA Index Drive
- 7300C Gear Reducer
- 11FC-SD Overload Clutch (Shaft Drive)
- 6.0-SD Overload Clutch (Direct Drive)
- 1 hp high-cycling, performance AC Motor
- IM-pAC Motor Control

Index Distance [in.]	Indexer Stops
4.50	8
9.00	4
18.00	2

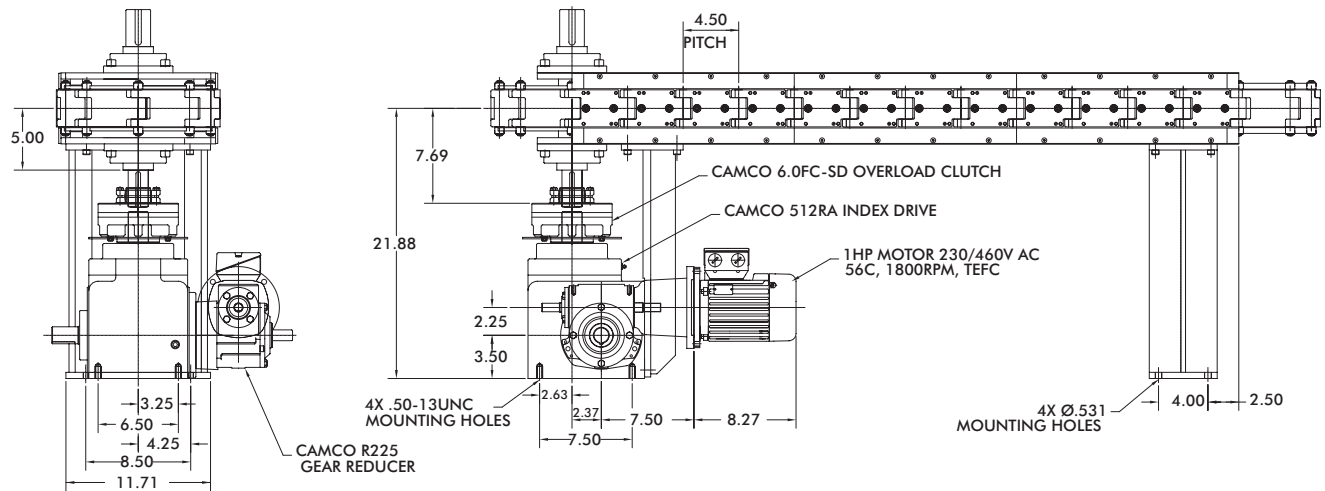
### Direct Drive Carousel



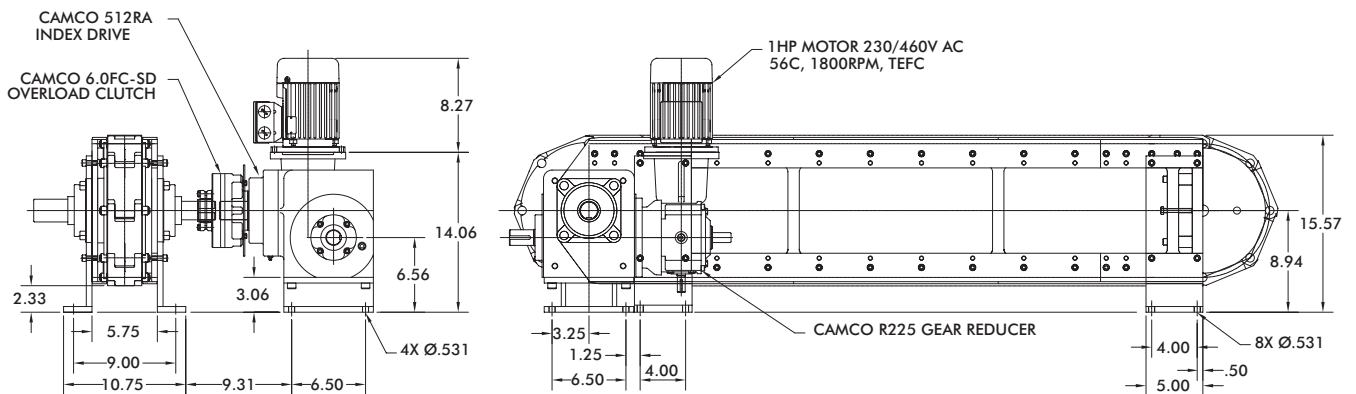
# 4.5 INCH SERIES

## Table-Top Modular Conveyors | Configurations

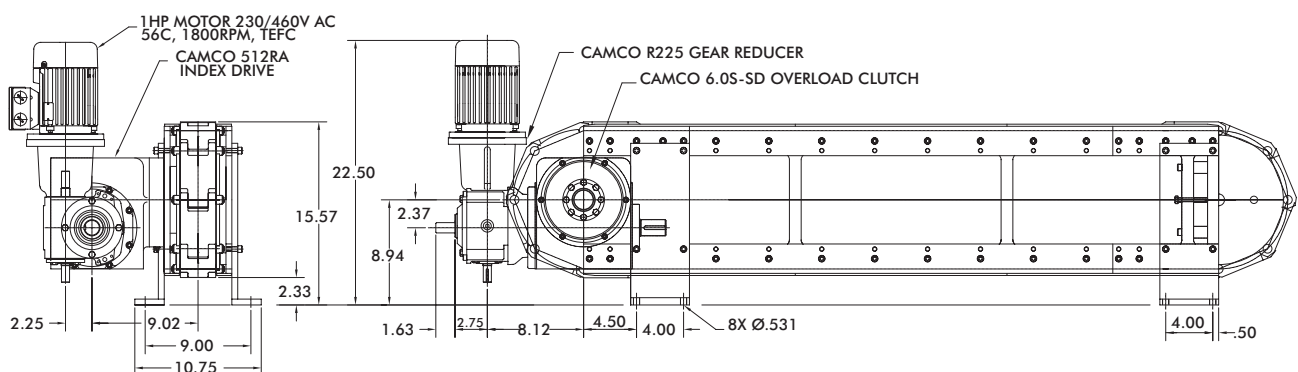
### Shaft Drive Carousel



### Shaft Drive Over/Under



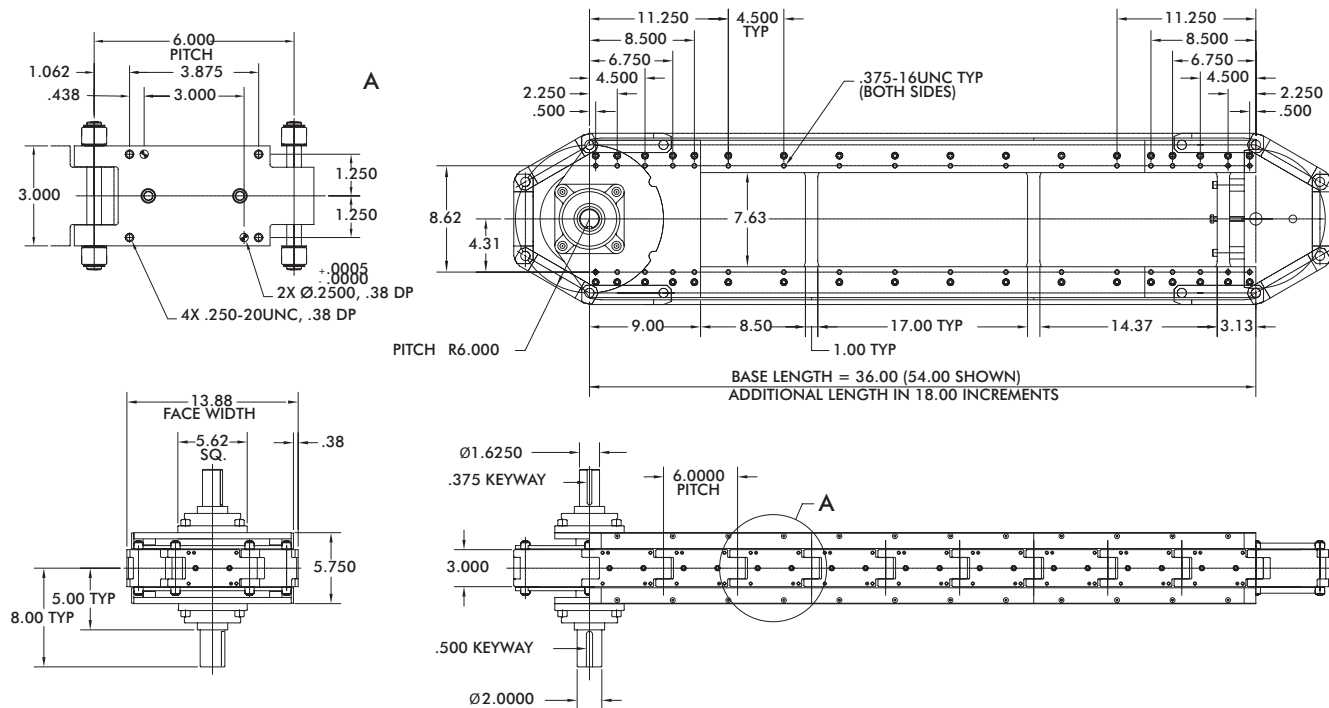
### Direct Drive Over/Under



# 6.0 INCH SERIES

## Table-Top Modular Conveyors | Configurations

### Modular Conveyor (module only)



### Modular Conveyor (drive package)

#### Standard Drive Package

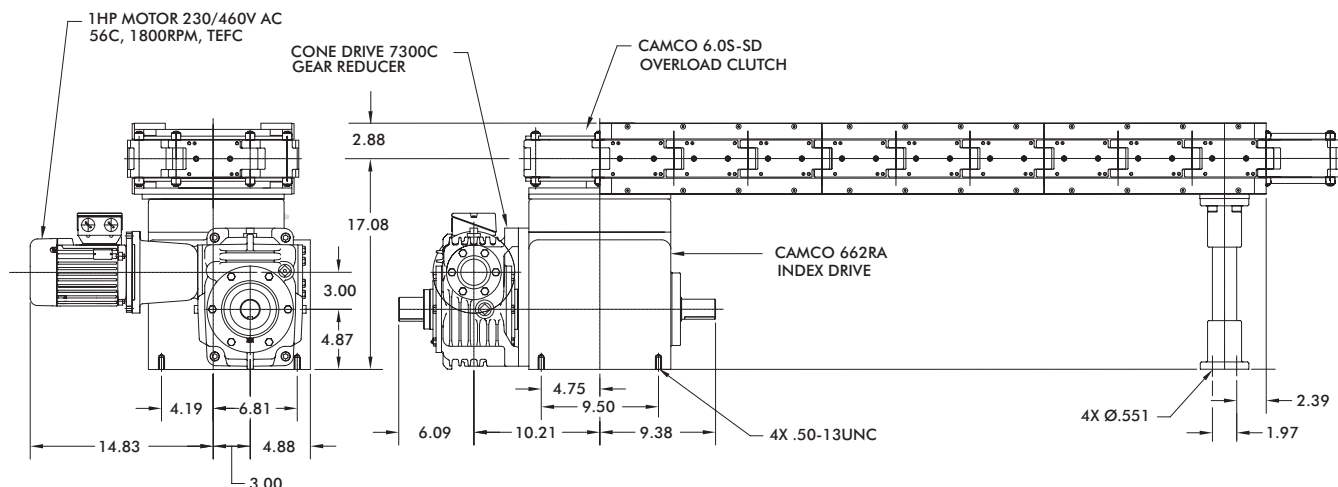
- 662RA Index Drive
- 7300C Gear Reducer
- 11FC-SD Overload Clutch (Shaft Drive)
- 6.0S-SD Overload Clutch (Direct Drive)
- 1 hp high-cycling, performance AC Motor
- IM-pAC Motor Control

#### Heavy-Duty Drive Package

- 800RD Index Drive
- 7300C Gear Reducer
- 25FC-SD Overload Clutch
- 1 hp high-cycling, performance AC Motor
- IM-pAC Motor Control

Index Distance [in.]	Indexer Stops
6.00	6
12.00	3
18.00	2

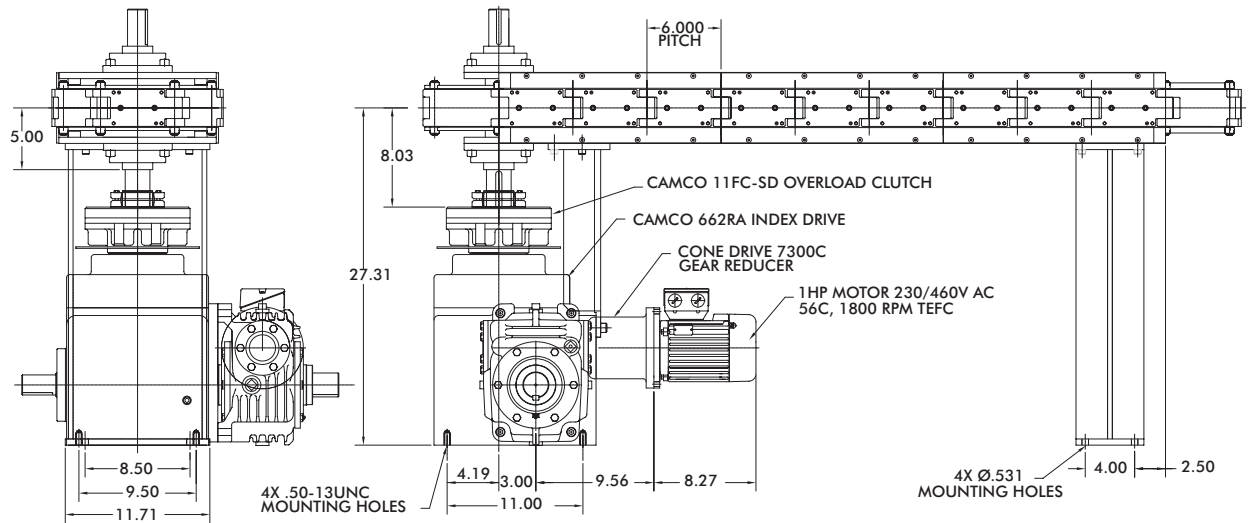
### Direct Drive Carousel



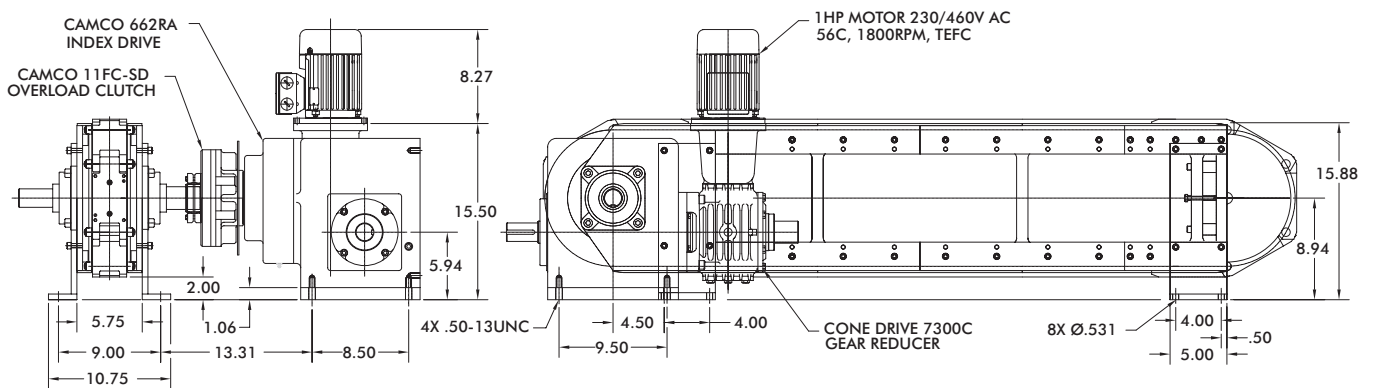
# 6.0 INCH SERIES

## Table-Top Modular Conveyors | Configurations

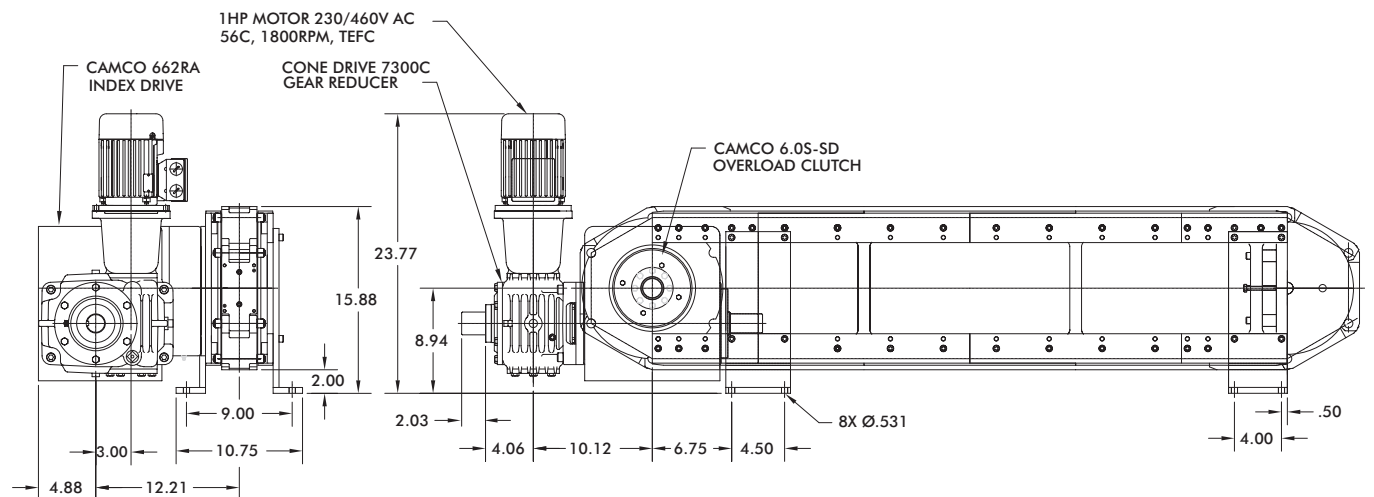
### Shaft Drive Carousel



### Shaft Drive Over/Under

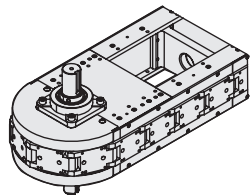


### Direct Drive Over/Under

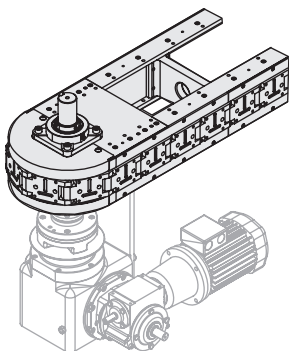


# TABLE-TOP MODULAR CONVEYORS

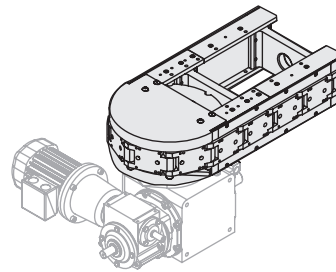
## Table-Top Modular Conveyors | Conveyor Types



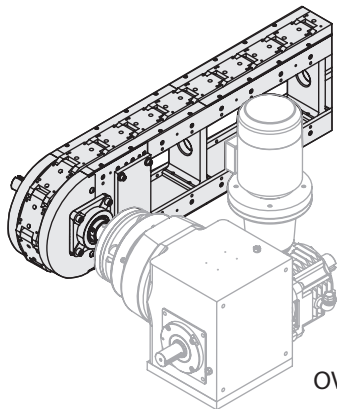
MODULE ONLY



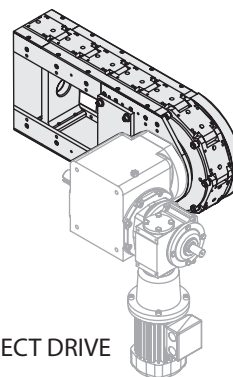
CAROUSEL-SHAFT DRIVEN



CAROUSEL-DIRECT DRIVEN

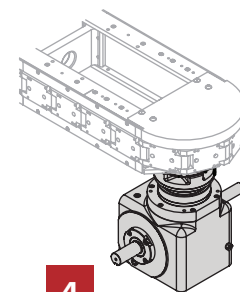
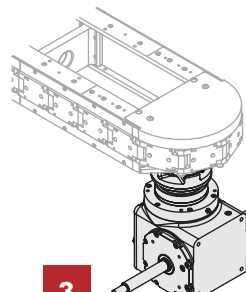
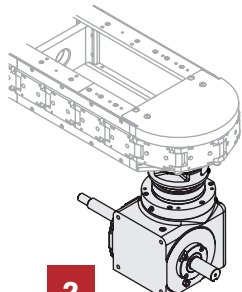
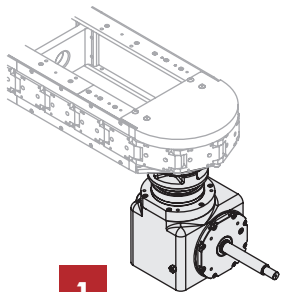


OVER-UNDER SHAFT DRIVEN



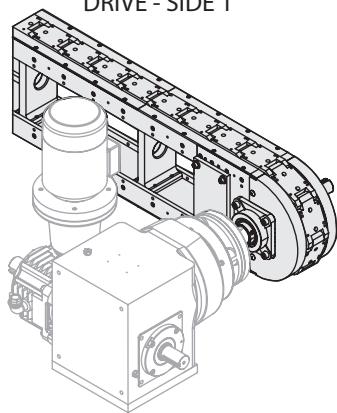
OVER-UNDER DIRECT DRIVE

### Carousel Indexer Position

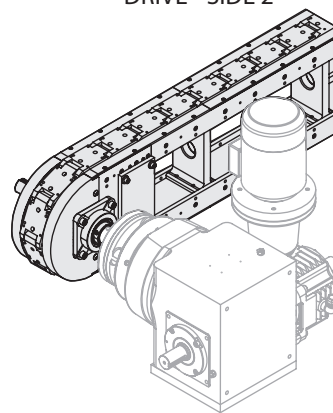


### Over/Under Side

DRIVE - SIDE 1



DRIVE - SIDE 2

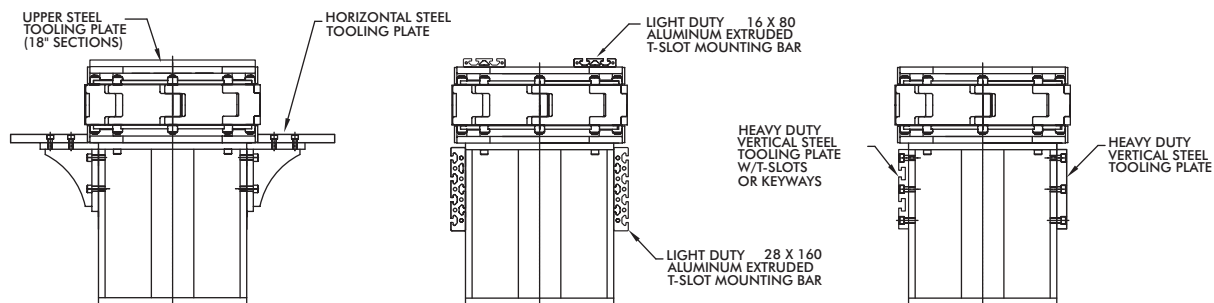




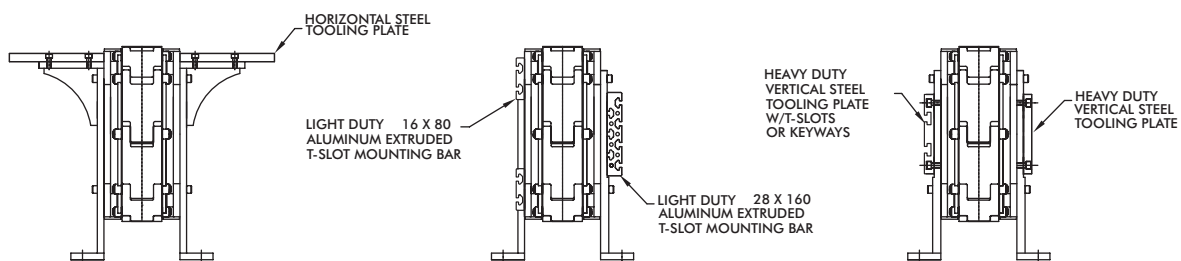
# TABLE-TOP MODULAR CONVEYORS

## Table-Top Modular Conveyors | Options

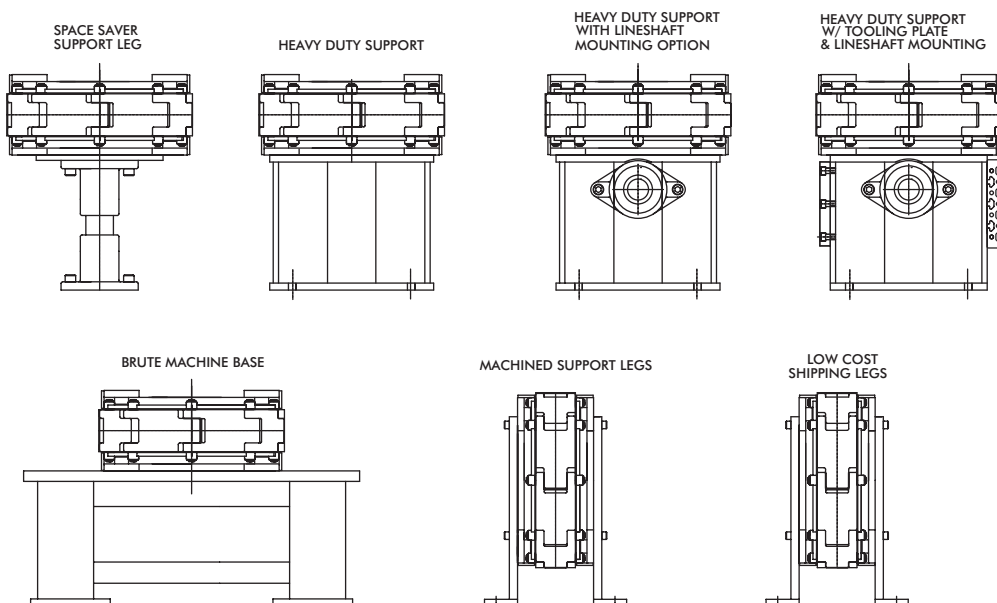
### Tooling Plate Options Carousel



### Tooling Plate Options Over/Under



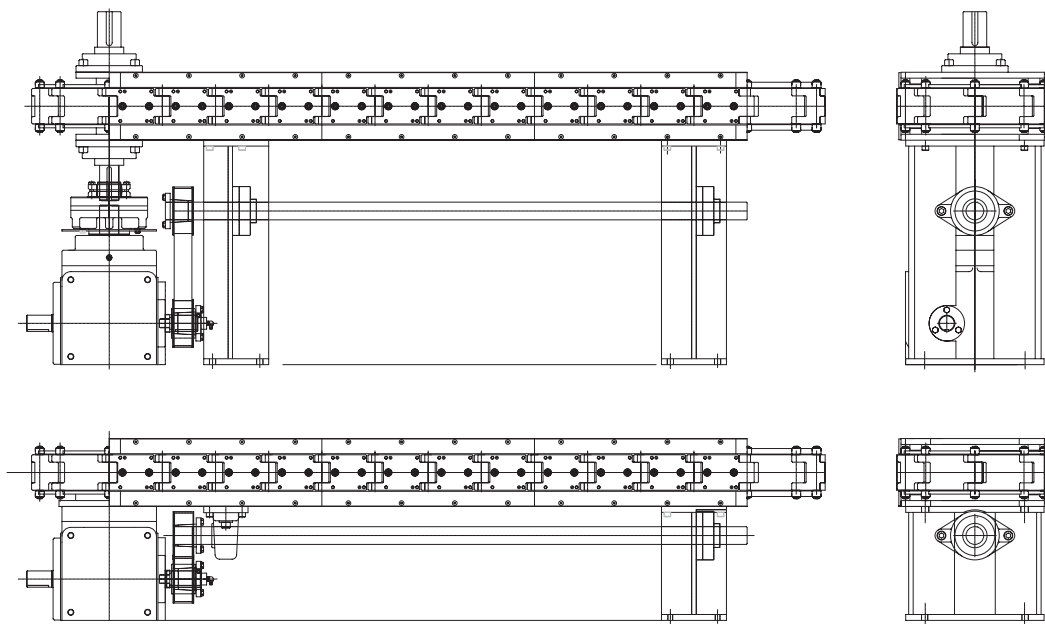
### Support Leg Options



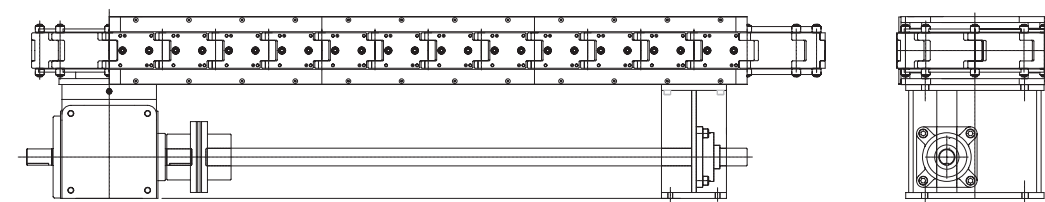
# TABLE-TOP MODULAR CONVEYORS

## Table-Top Modular Conveyors | Options

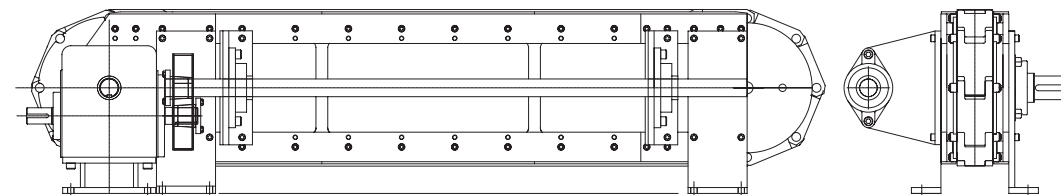
### Lower Lineshaft Options Belt Driven



### Lower Lineshaft Options Direct Driven



### Drive Side Lineshaft Options Belt Driven



### Drive Side Lineshaft Options Direct Driven

