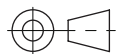
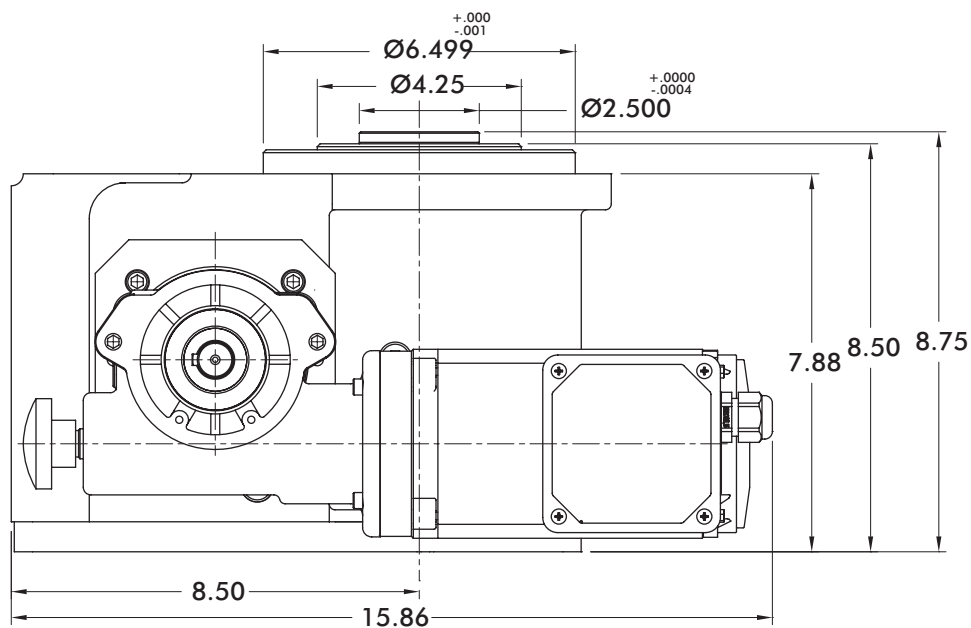
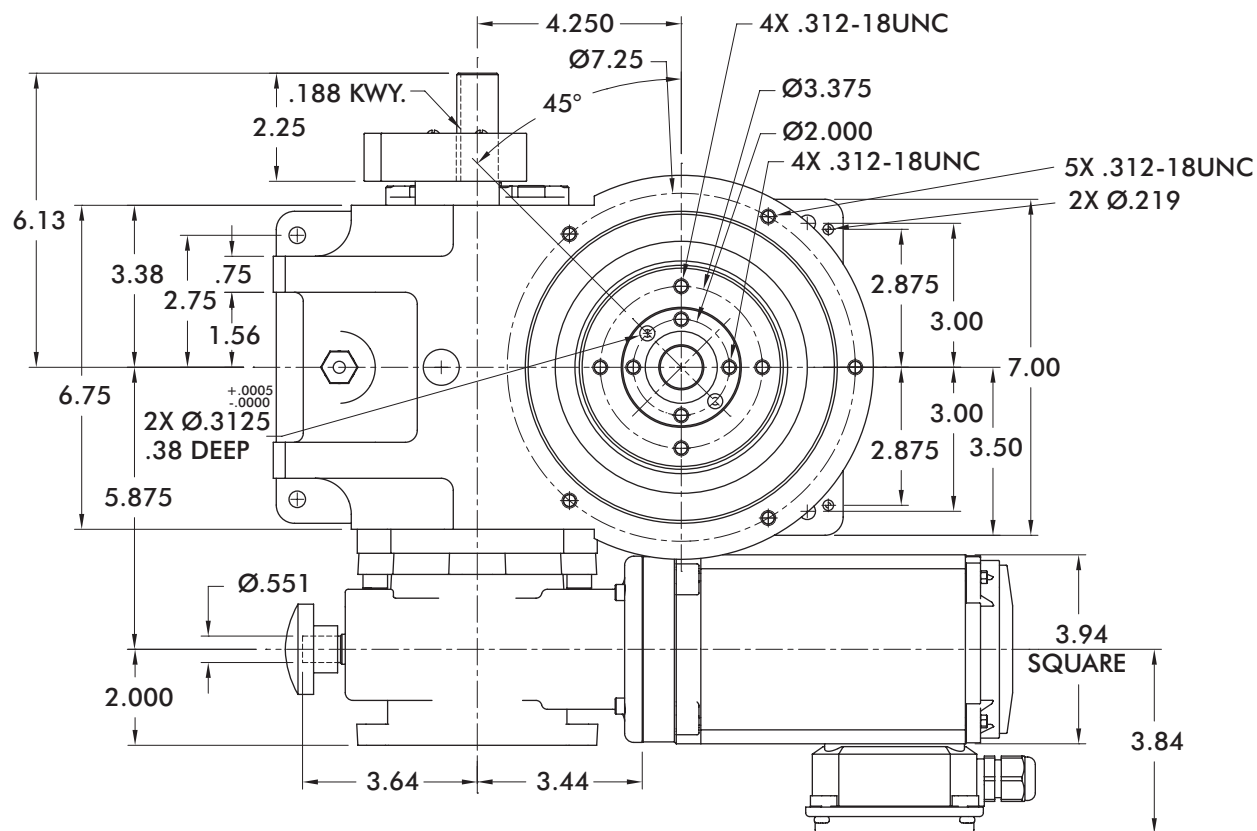


425RD SERIES

Precision Indexing | Dimensions



Unless otherwise noted,
all dimensions are in inches.

425RD SERIES

Precision Indexing | Product Overview, Technical Information, Optional Accessories

Maximum Inertia x 1000 [lb-in ²] for standard package							
Stops	Motion Time [seconds]						
	0.458	0.611	0.764	0.917	1.222	1.528	1.833
2	0	1	2	4	11	16	22
3	1	2	6	11	25	37	50
4	1	5	10	19	44	66	90
6	4	11	24	44	100	150	156
8	7	20	43	79	156	156	156
12	16	45	89	136	147	147	147
Reducer Ratio							
	15	20	25	30	40	50	60

Features

- R180 Reducer (ratios from 15:1 to 60:1)
 - Double Extended Worm Shaft (Input)
 - Worm Shaft Handwheel
- Double Extended Camshaft (Input Shaft)
- 1/3 hp AC Drive Package with Inverter Duty Motor and IM-pAC AC Drive (up to 60 cpm)
- R225 Reducer with 1 hp AC or DC Motor (ratios of 5:1 to 60:1)
- Cycle Cam and Limit Switch Mounted to Camshaft
- Right Hand Cam

Optional Accessories

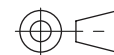
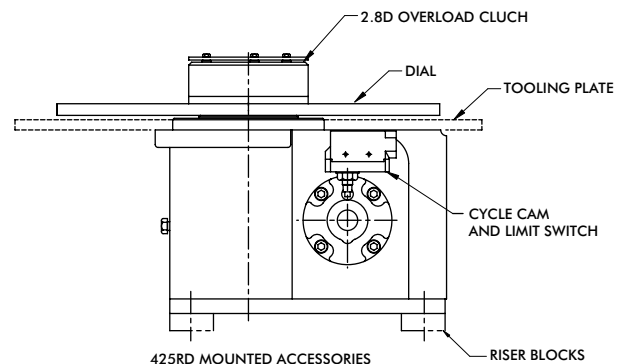
- 1/3 hp DC Motor
- Varipak DC Motor Control (up to 30 cpm)
- 2.8D Output Overload Clutch
 - Available Settings (in-lbs): 400, 480, 700, 850, 1100, 1300, 1800, 2200, 3100
- Center Thru Hole (0.81 in. Diameter)
- Stationary Center Post
- Dual Cam and Limit Switch
- Left Hand Cam
- Relief in Dwell for shot-pin applications
- Universal Mounting Capability
- Custom Dial Plate

Output Load Capacity (loads carried during index):

Radial	2,700 lbs
Thrust/Axial	1,600 lbs
Moment	5,800 in-lbs

Accuracy
Radius ±47 arcsec / ±.0027" at 12"

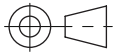
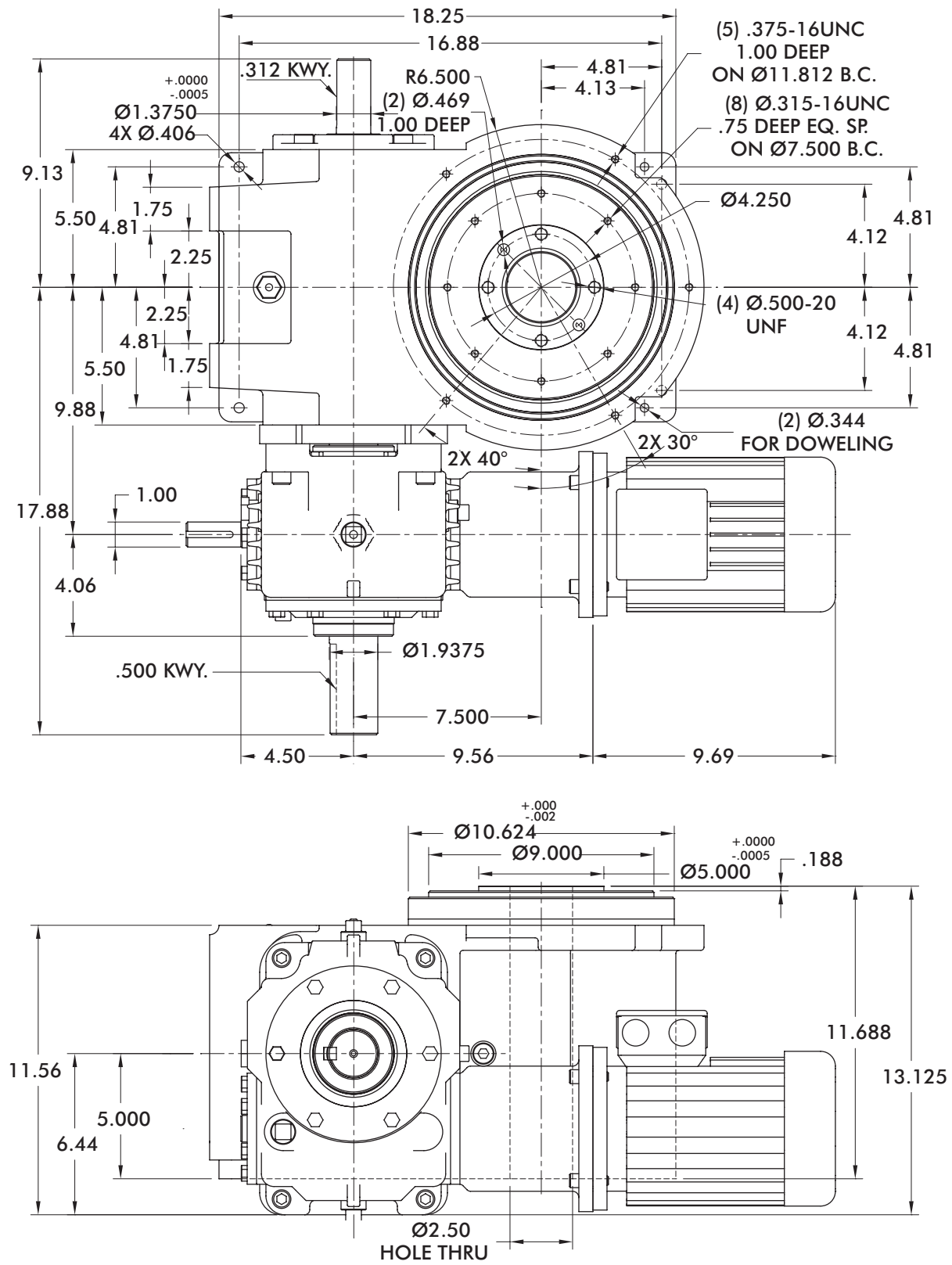
Repeatability
Radius ±12 arcsec / ±.0007" at 12"



Unless otherwise noted,
all dimensions are in inches.

800RD SERIES

Precision Indexing | Dimensions



Unless otherwise noted,
all dimensions are in inches.



IN-RD-7

Dimensions and technical information are subject to change without notice

800RD SERIES

Precision Indexing | Product Overview, Technical Information, Optional Accessories

Maximum Inertia x 1000 [lb-in ²] for standard package							
Stops	Motion Time [seconds]						
	0.458	0.611	0.764	0.917	1.222	1.528	1.833
2	2	8	17	32	55	83	114
3	7	19	40	72	125	187	258
4	13	35	72	130	223	334	459
6	30	79	164	293	504	753	1,034
8	54	142	292	521	897	1,232	1,232
12	123	312	522	794	1,156	1,156	1,156
Reducer Ratio							
	15	20	25	30	40	50	60

Features

- 7300C Reducer (Ratios from 15:1 to 60:1)
 - Double Extended Worm Shaft (Input)
 - Motor Adapter and Coupling
- Double Extended Camshaft (Input Shaft)
- 1 hp AC Drive Package with Inverter Duty Motor and IM-pAC AC Drive (up to 60 cpm)
- Cycle Cam and Limit Switch Mounted to Camshaft
- Right Hand Cam

Output Load Capacity (loads carried during index):

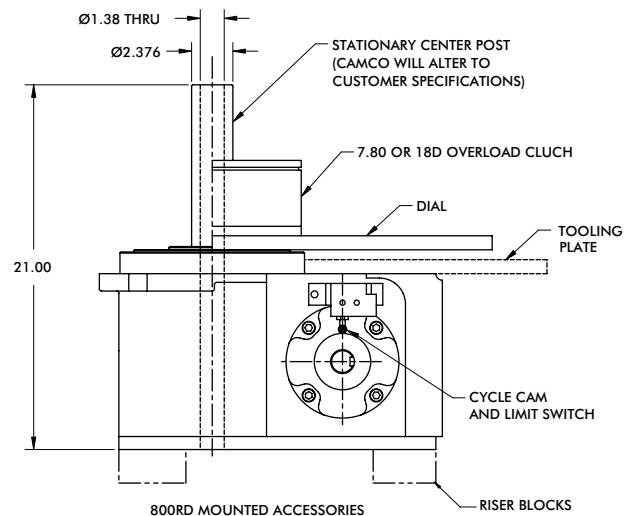
Radial 4,977 lbs
 Thrust/Axial 3,561 lbs
 Moment 22,398 in-lbs

Accuracy ±30 arcsec / ±.004" at 24" Radius

Repeatability ±8 arcsec / ±.0009" at 24" Radius

Optional Accessories

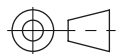
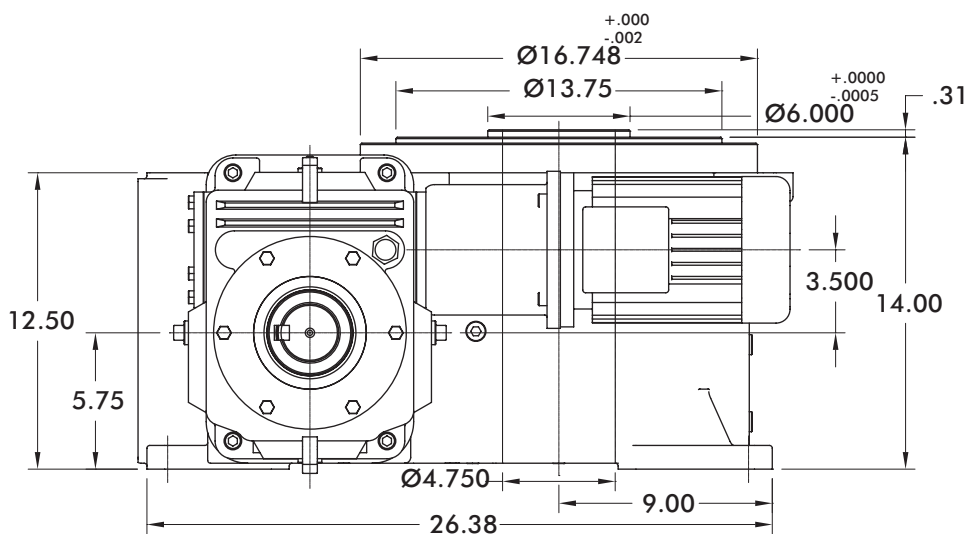
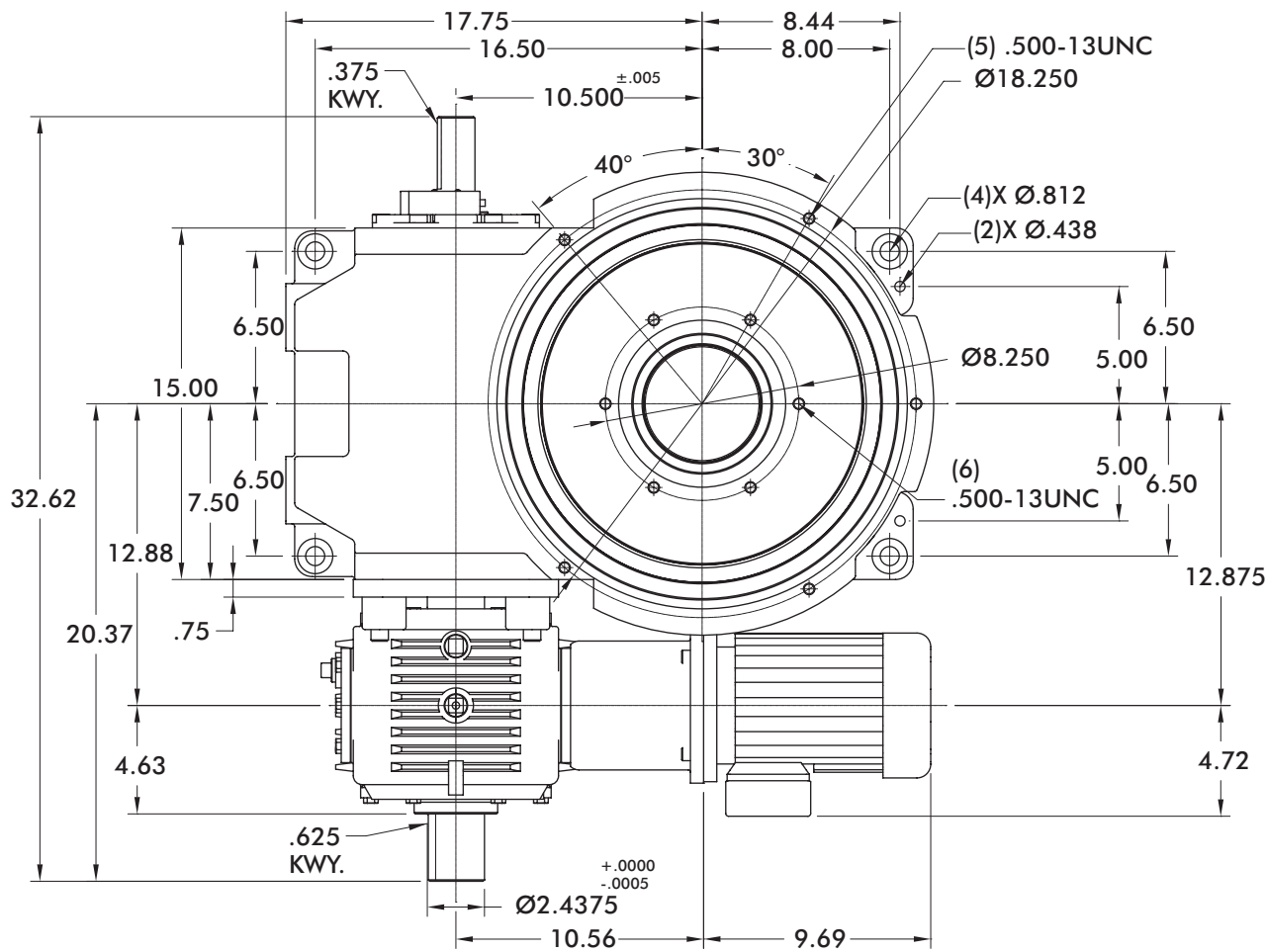
- 7350C Reducer (ratios from 5:1 to 60:1) with 1 hp AC or DC Motor
- 1 hp DC Motor
- Varipak DC Motor Control (up to 30 cpm)
- Output Overload Clutch model 7.8D
 - Available Settings (in-lbs): 1400, 1700, 2600, 3200, 4200, 5000, 7200, 10,000
- Output Overload Clutch model 18D
 - Available Settings (in-lbs): 5000, 7000, 7800, 10,000, 12,000, 16,000, 19,000, 21,000, 27,000, 42,000, 45,000
- Center Thru Hole (2.50 in. Diameter)
- Stationary Center Post
- Dual Cam and Limit Switch
- Left Hand Cam
- Relief in Dwell for shot-pin applications
- Universal Mounting Capability
- Custom Dial Plate



Unless otherwise noted, all dimensions are in inches.

1301RD SERIES

Precision Indexing | Dimensions



Unless otherwise noted,
all dimensions are in inches.

1301RD SERIES

Precision Indexing | Product Overview, Technical Information, Optional Accessories

Maximum Inertia x 1000 [lb-in ²] for standard package							
Stops	Motion Time [seconds]						
	0.458	0.611	0.764	0.917	1.222	1.528	1.833
2	0	5	15	29	51	78	108
3	4	16	37	68	119	179	246
4	10	31	67	123	214	321	440
6	26	73	155	281	485	725	995
8	48	132	278	503	865	1,291	1,771
12	111	301	630	1,135	1,951	2,909	3,989
16	201	538	1,122	2,020	3,471	5,174	7,093
Reducer Ratio							
	15	20	25	30	40	50	60

Features

- 7350C Reducer (Ratios from 15:1 to 60:1)
 - Double Extended Worm Shaft (Input)
 - Motor Adapter and Coupling
- Double Extended Camshaft (Input Shaft)
- 2 hp AC Drive Package with Inverter Duty Motor and Inverter Drive (up to 60 cpm)
- Cycle Cam and Limit Switch Mounted to Camshaft
- Right Hand Cam

Optional Accessories

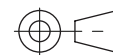
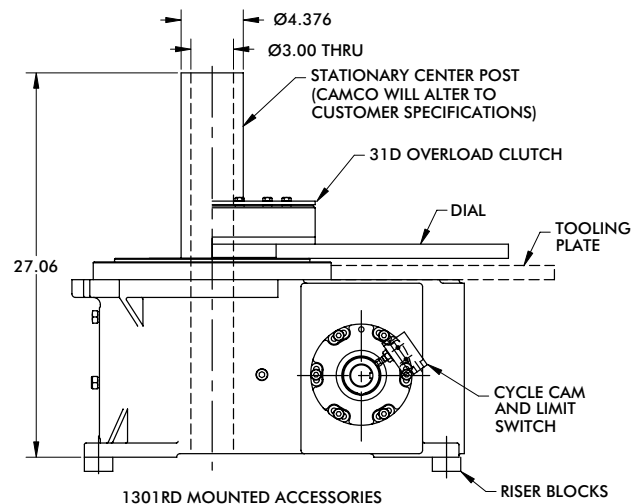
- 7400C Reducer (Ratios from 5:1 to 60:1) with Motor Adapter and Coupling
- 2 hp DC Motor
- Varipak DC Motor Control (up to 30 cpm)
- Output Overload Clutch model 31D
 - Available Settings (in-lbs): 8500, 13,000, 20,000, 31,000
- Center Thru Hole (4.75 in. Diameter)
- Stationary Center Post
- Dual Cam and Limit Switch
- Left Hand Cam
- Relief in Dwell for shot-pin applications
- Universal Mounting Capability
- Custom Dial Plate

Output Load Capacity (loads carried during index):

Radial 15,800 lbs
 Thrust/Axial 10,800 lbs
 Moment 109,000 in-lbs

Accuracy
 Radius ±39 arcsec / ±.0068" at 36"

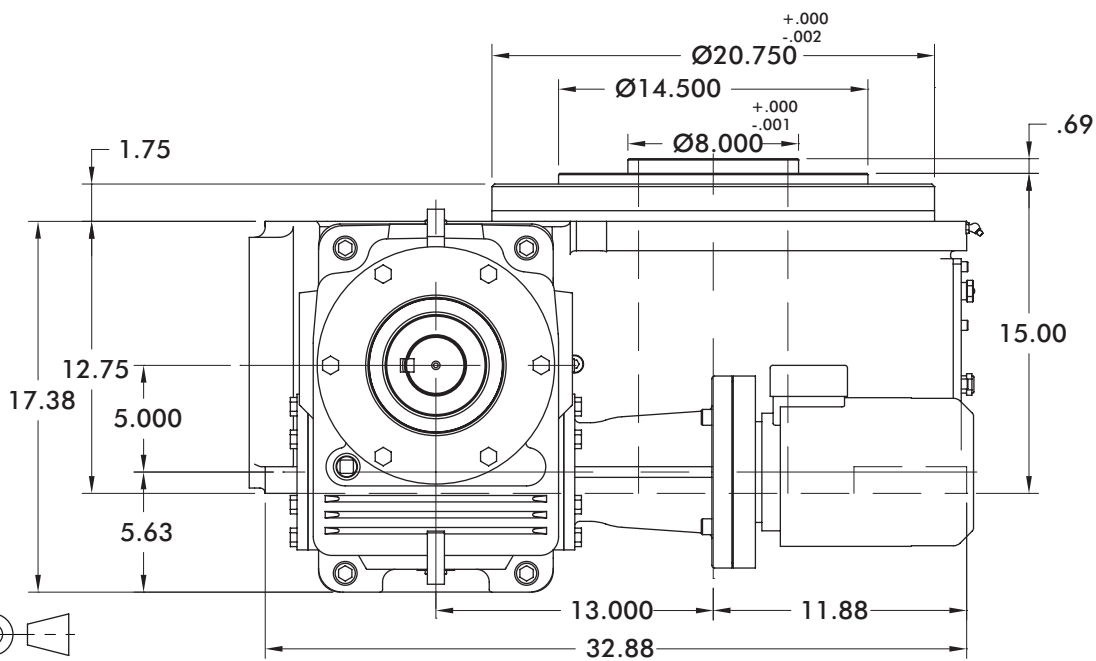
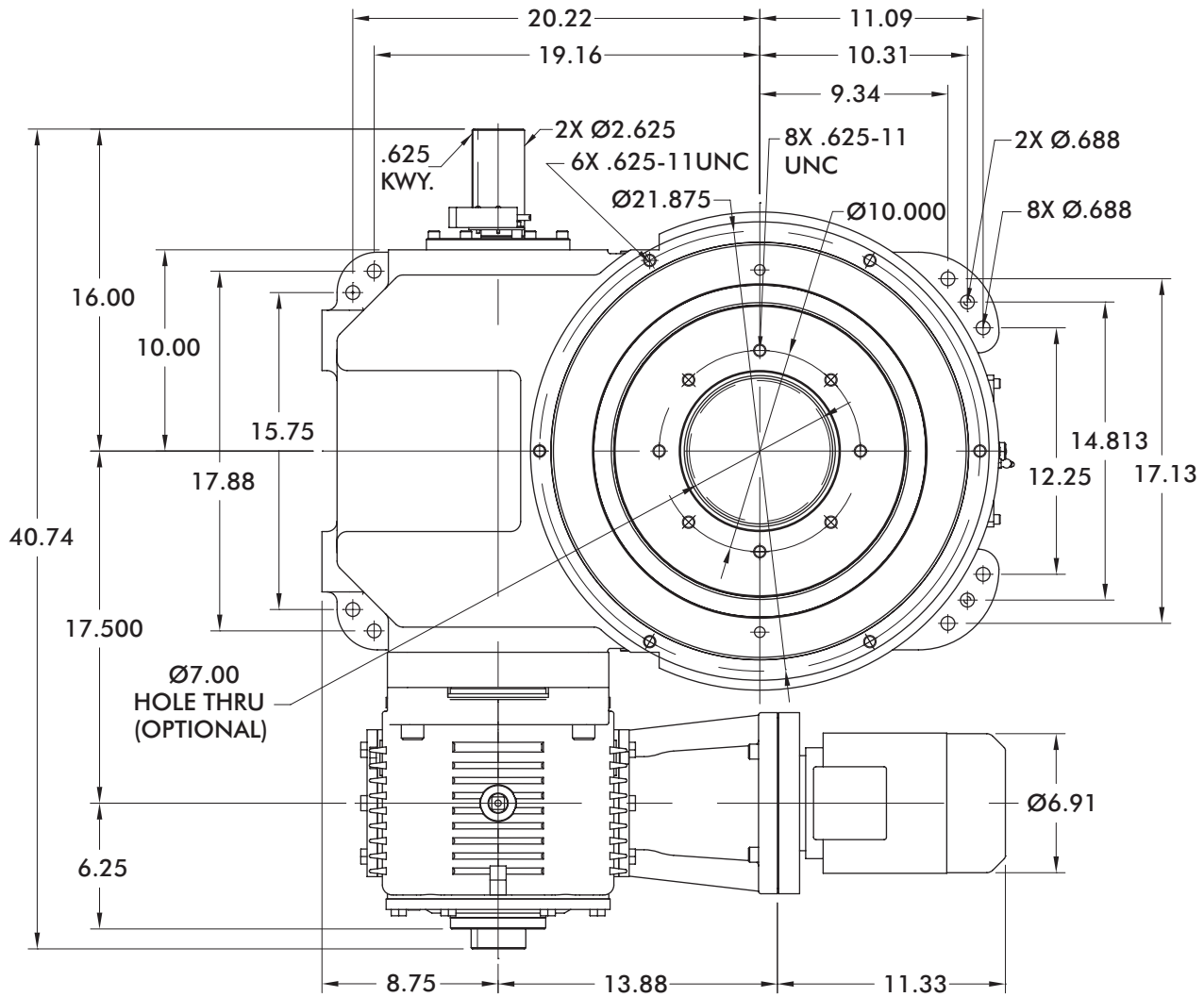
Repeatability
 Radius ±10 arcsec / ±.0017" at 36"



Unless otherwise noted, all dimensions are in inches.

1801RD SERIES

Precision Indexing | Dimensions



Unless otherwise noted,
all dimensions are in inches.



IN-RD-11

Dimensions and technical information are subject to change without notice

1801RD SERIES

Precision Indexing | Product Overview, Technical Information, Optional Accessories

Maximum Inertia x 1000 [lb-in ²] for standard package							
Stops	Motion Time [seconds]						
	0.458	0.611	0.764	0.917	1.222	1.528	1.833
2	0	5	18	39	109	229	412
3	2	17	44	86	230	476	850
4	9	39	92	175	458	939	1,672
6	27	91	205	383	989	2,021	3,593
8	54	168	370	687	1,763	3,598	6,393
12	127	383	839	1,552	3,973	8,102	14,391
16	232	687	1,498	2,765	7,070	1,441	19,455
Reducer Ratio							
	15	20	25	30	40	50	60

Features

- 7500C Reducer (Ratios from 15:1 to 60:1)
 - Double Extended Worm Shaft (Input)
 - Motor Adapter and Coupling
- Double Extended Camshaft (Input Shaft)
- 3 hp AC Drive Package with Inverter Duty Motor and Inverter Drive (up to 60 cpm)
- Cycle Cam and Limit Switch Mounted to Camshaft
- Right Hand Cam

Optional Accessories

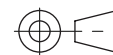
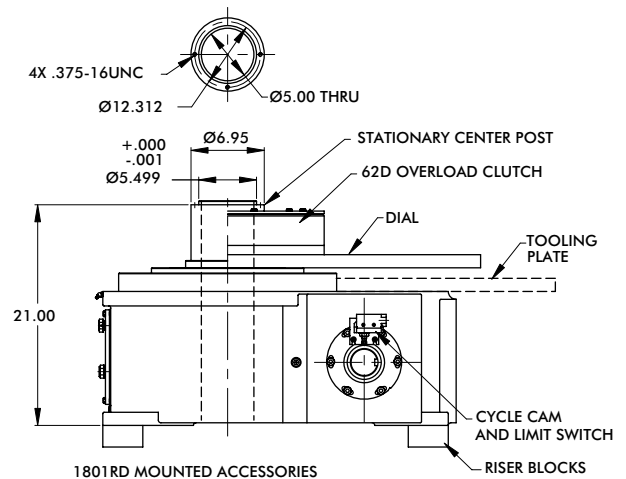
- 7600C or 7700C Reducer (Ratios from 5:1 to 60:1) with Motor Adapter and Coupling
- 3 hp DC Motor
- Output Overload Clutch model 62D
 - Available Settings (in-lbs): 23,000, 36,000, 44,000, 50,000, 60,000
- Center Thru Hole (7.00 in. Diameter)
- Stationary Center Post
- Dual Cam and Limit Switch
- Left Hand Cam
- Relief in Dwell for shot-pin applications
- Custom Dial Plate

Output Load Capacity (loads carried during index):

Radial 14,800 lbs
 Thrust/Axial 12,600 lbs
 Moment 107,000 in-lbs

Accuracy ±27 arcsec / ±.0063" at 48" Radius

Repeatability ±7 arcsec / ±.0016" at 48" Radius



Unless otherwise noted, all dimensions are in inches.