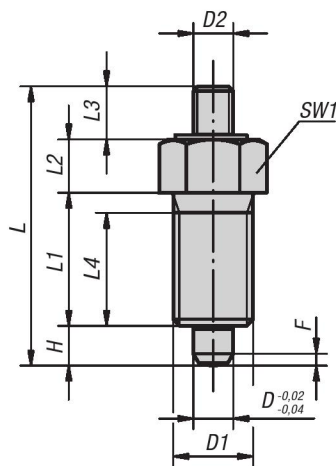




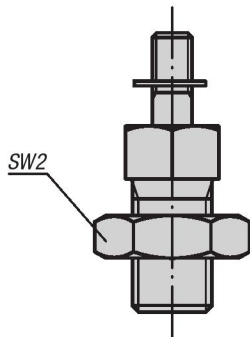
Indexing Plungers

threaded pin

INCH
Parts



Style E
with threaded pin
without locknut



Style F
with threaded pin
with locknut

Material:

- Steel version, locking pin hardened: quality class 5.8
- Stainless steel version, locking pin hardened: threaded sleeve 1.4305 locking pin 1.4034
- Stainless steel version, locking pin not hardened: threaded sleeve 1.4305 locking pin 1.4305

Type:

- Steel version, locking pin hardened: black oxide finish, locking pin ground
- Stainless steel version, locking pin hardened: natural finish, locking pin ground
- Stainless steel version, locking pin not hardened: natural finish, locking pin ground

Part Number Example:

K0341.1903AJ

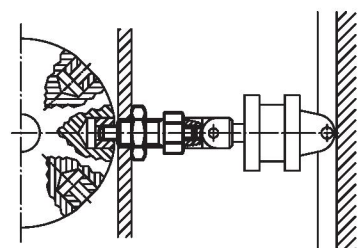
Note:

Indexing plungers are used to prevent any change in locking position due to lateral forces. A new locking position can only be set after the pin has been disengaged. Special grips can be fitted on the threaded head. This pin is also suitable for automatic actuation e.g. program controlled pneumatic cylinder or by remote control using bowden cables.

On request:

Special versions and spacer rings.

Application Diagram





Indexing Plungers

threaded pin

KIPP Indexing Plungers, threaded pin, steel, locking pin hardened, inch

Item No. Style E	Item No. Style F	D	D1	D2	L	L1	L2	L3	L4	H	SW1	SW2	F x 30°	Spring force initial pressure F1 approx. N	Spring force final pressure F2 approx. N
K0341.1903AJ	K0341.2903AJ	3	1/4-28	M2	24	12	5	3.5	10	3.5	8	-17/16	.8	4.5	10
K0341.1004AK	K0341.2004AK	4	5/16-24	M3	32	15	6	7	13	4	10	-11/2	1	6	12
K0341.1105AL	K0341.2105AL	5	3/8-24	M4	37	17	7	8	15	5	13	-19/16	1.3	5	12
K0341.1206A5	K0341.2206A5	6	1/2-13	M6	42	20	8	8	17	6	14	-13/4	1.8	6	14
K0341.1308A6	K0341.2308A6	8	5/8-11	M8	56	26	10	12	23	8	19	-115/16	2.3	15	35
K0341.1410A7	K0341.2410A7	10	3/4-10	M8	62	28	12	12	25	10	22	-111/8	2.8	15	34
K0341.1412A0	K0341.2412A0	12	3/4-16	M8	66	28	14	12	25	12	22	-111/8	2.8	15	39
K0341.1516A8	K0341.2516A8	16	1"-8	M10	80	32	18	14	28	16	27	-111/2	3.2	20	46

KIPP Indexing Plungers, threaded pin, stainless steel, locking pin hardened, inch

Item No. Style E	Item No. Style F	D	D1	D2	L	L1	L2	L3	L4	H	SW1	SW2	F x 30°	Spring force initial pressure F1 approx. N	Spring force final pressure F2 approx. N
K0341.01903AJ	K0341.02903AJ	3	1/4-28	M2	24	12	5	3.5	10	3.5	8	-17/16	.8	4.5	10
K0341.01004AK	K0341.02004AK	4	5/16-24	M3	32	15	6	7	13	4	10	-11/2	1	6	12
K0341.01105AL	K0341.02105AL	5	3/8-24	M4	37	17	7	8	15	5	13	-19/16	1.3	5	12
K0341.01206A5	K0341.02206A5	6	1/2-13	M6	42	20	8	8	17	6	14	-13/4	1.8	6	14
K0341.01308A6	K0341.02308A6	8	5/8-11	M8	56	26	10	12	23	8	19	-115/16	2.3	15	35
K0341.01410A7	K0341.02410A7	10	3/4-10	M8	62	28	12	12	25	10	22	-111/8	2.8	15	34
K0341.01412A0	K0341.02412A0	12	3/4-16	M8	66	28	14	12	25	12	22	-111/8	2.8	15	39
K0341.01516A8	K0341.02516A8	16	1"-8	M10	80	32	18	14	28	16	27	-111/2	3.2	20	46

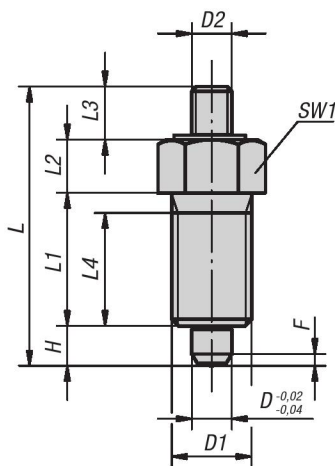
KIPP Indexing Plungers, threaded pin, stainless steel, locking pin not hardened, inch

Item No. Style E	Item No. Style F	D	D1	D2	L	L1	L2	L3	L4	H	SW1	SW2	F x 30°	Spring force initial pressure F1 approx. N	Spring force final pressure F2 approx. N
K0341.11903AJ	K0341.12903AJ	3	1/4-28	M2	24	12	5	3.5	10	3.5	8	-17/16	.8	4.5	10
K0341.11004AK	K0341.12004AK	4	5/16-24	M3	32	15	6	7	13	4	10	-11/2	1	6	12
K0341.11105AL	K0341.12105AL	5	3/8-24	M4	37	17	7	8	15	5	13	1.319/16	1.3	5	12
K0341.11206A5	K0341.12206A5	6	1/2-13	M6	42	20	8	8	17	6	14	613/4	1.8	6	14
K0341.11308A6	K0341.12308A6	8	5/8-11	M8	56	26	10	12	23	8	19	2.3115/16	2.3	15	35
K0341.11410A7	K0341.12410A7	10	3/4-10	M8	62	28	12	12	25	10	22	15111/8	2.8	15	34
K0341.11412A0	K0341.12412A0	12	3/4-16	M8	66	28	14	12	25	12	22	-111/8	2.8	15	39
K0341.11516A8	K0341.12516A8	16	1"-8	M10	80	32	18	14	28	16	27	-111/2	3.2	20	46

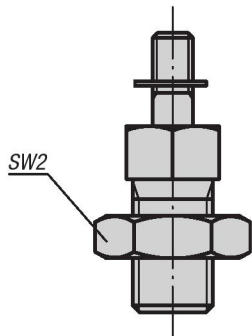
Indexing Plungers

threaded pin

METRIC
Parts



Style E
with threaded pin
without locknut



Style F
with threaded pin
with locknut

Material:

- Steel version, locking pin hardened:
quality class 5.8
- Stainless steel version, locking pin hardened:
threaded sleeve 1.4305
locking pin 1.4034
- Stainless steel version, locking pin not hardened:
threaded sleeve 1.4305
locking pin 1.4305

Type:

- Steel version, locking pin hardened:
black oxide finish, locking pin ground
- Stainless steel version, locking pin hardened:
natural finish, locking pin ground
- Stainless steel version, locking pin not hardened:
natural finish, locking pin ground

Part Number Example:

K0341.1903AJ

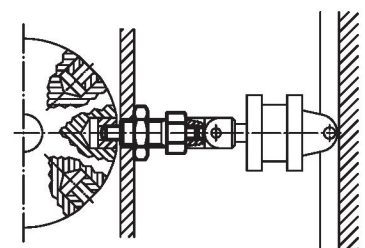
Note:

Indexing plungers are used to prevent any change in locking position due to lateral forces. A new locking position can only be set after the pin has been disengaged. Special grips can be fitted on the threaded head. This pin is also suitable for automatic actuation e.g. program controlled pneumatic cylinder or by remote control using bowden cables.

On request:

Special versions and spacer rings.

Application Diagram





Indexing Plungers

threaded pin

KIPP Indexing Plungers, threaded pin, steel, locking pin hardened, metric

Item No. Style E	Item No. Style F	D	D1	D2	L	L1	L2	L3	L4	H	SW1	SW2	F x 30°	Spring force initial pressure F1 approx. N	Spring force final pressure F2 approx. N
K0341.1903	K0341.2903	3	M6x0,75	M2	24	12	5	3,5	10	3,5	8	- / 10	0,8	4,5	10
K0341.1004	K0341.2004	4	M8x1	M3	32	15	6	7	13	4	10	- / 13	1	6	12
K0341.1105	K0341.2105	5	M10x1	M4	37	17	7	8	15	5	13	- / 17	1,3	5	12
K0341.1206	K0341.2206	6	M12x1,5	M6	42	20	8	8	17	6	14	- / 19	1,8	6	14
K0341.1308	K0341.2308	8	M16x1,5	M8	56	26	10	12	23	8	19	- / 24	2,3	15	35
K0341.1410	K0341.2410	10	M20x1,5	M8	62	28	12	12	25	10	22	- / 30	2,8	15	34
K0341.1412	K0341.2412	12	M20x1,5	M8	66	28	14	12	25	12	22	- / 30	2,8	15	39
K0341.1516	K0341.2516	16	M24x2	M10	80	32	18	14	28	16	27	- / 36	3,2	20	46

KIPP Indexing Plungers, threaded pin, stainless steel, locking pin hardened, metric

Item No. Style E	Item No. Style F	D	D1	D2	L	L1	L2	L3	L4	H	SW1	SW2	F x 30°	Spring force initial pressure F1 approx. N	Spring force final pressure F2 approx. N
K0341.01903	K0341.02903	3	M6x0,75	M2	24	12	5	3,5	10	3,5	8	- / 10	0,8	4,5	10
K0341.01004	K0341.02004	4	M8x1	M3	32	15	6	7	13	4	10	- / 13	1	6	12
K0341.01105	K0341.02105	5	M10x1	M4	37	17	7	8	15	5	13	- / 17	1,3	5	12
K0341.01206	K0341.02206	6	M12x1,5	M6	42	20	8	8	17	6	14	- / 19	1,8	6	14
K0341.01308	K0341.02308	8	M16x1,5	M8	56	26	10	12	23	8	19	- / 24	2,3	15	35
K0341.01410	K0341.02410	10	M20x1,5	M8	62	28	12	12	25	10	22	- / 30	2,8	15	34
K0341.01412	K0341.02412	12	M20x1,5	M8	66	28	14	12	25	12	22	- / 30	2,8	15	39
K0341.01516	K0341.02516	16	M24x2	M10	80	32	18	14	28	16	27	- / 36	3,2	20	46

KIPP Indexing Plungers, threaded pin, stainless steel, locking pin not hardened, metric

Item No. Style E	Item No. Style F	D	D1	D2	L	L1	L2	L3	L4	H	SW1	SW2	F x 30°	Spring force initial pressure F1 approx. N	Spring force final pressure F2 approx. N
K0341.11903	K0341.12903	3	M6x0,75	M2	24	12	5	3,5	10	3,5	8	- / 10	0,8	4,5	10
K0341.11004	K0341.12004	4	M8x1	M3	32	15	6	7	13	4	10	- / 13	1	6	12
K0341.11105	K0341.12105	5	M10x1	M4	37	17	7	8	15	5	13	- / 17	1,3	5	12
K0341.11206	K0341.12206	6	M12x1,5	M6	42	20	8	8	17	6	14	- / 19	1,8	6	14
K0341.11308	K0341.12308	8	M16x1,5	M8	56	26	10	12	23	8	19	- / 24	2,3	15	35
K0341.11410	K0341.12410	10	M20x1,5	M8	62	28	12	12	25	10	22	- / 30	2,8	15	34
K0341.11412	K0341.12412	12	M20x1,5	M8	66	28	14	12	25	12	22	- / 30	2,8	15	39
K0341.11516	K0341.12516	16	M24x2	M10	80	32	18	14	28	16	27	- / 36	3,2	20	46